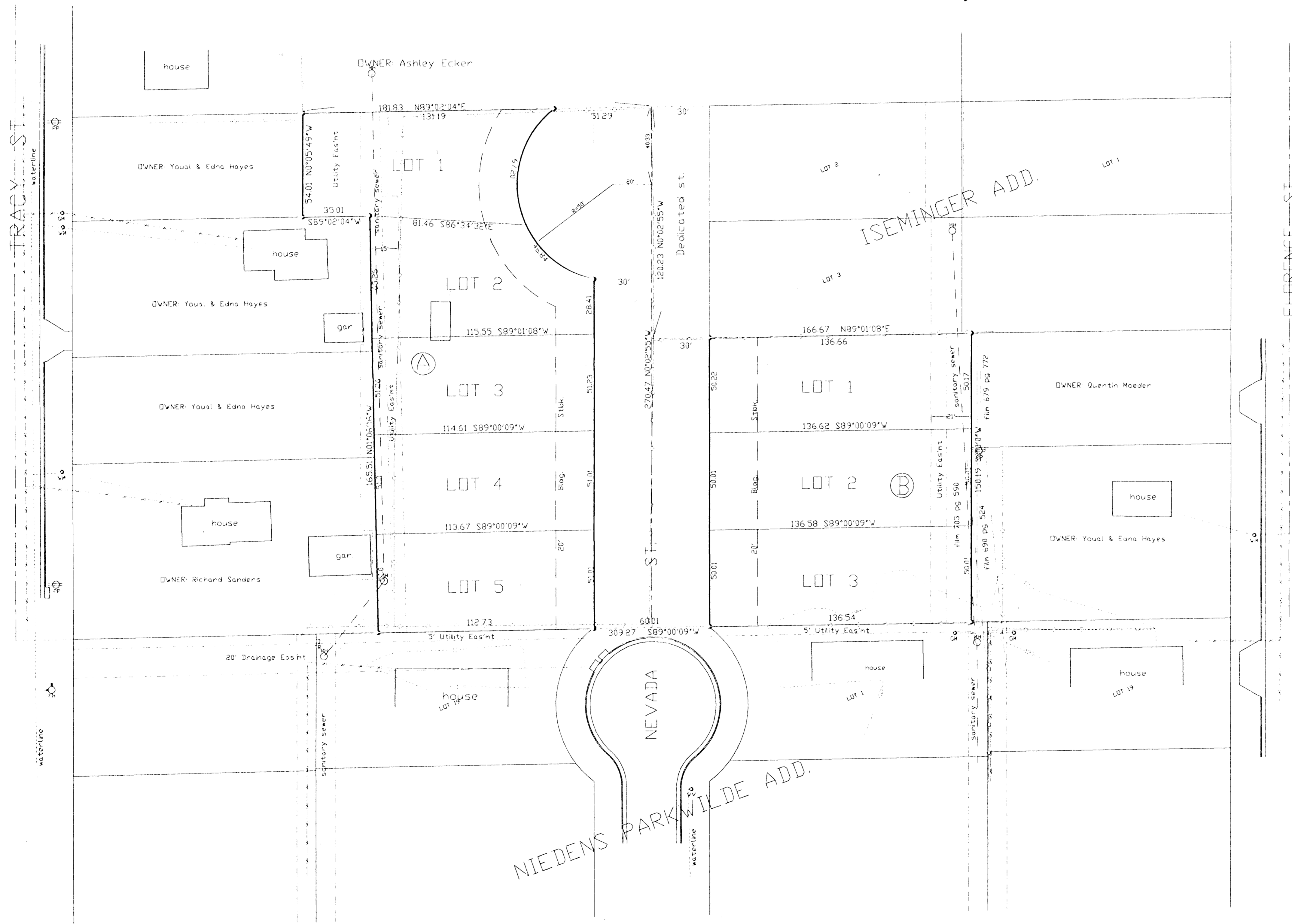


# PRELIMINARY PLAT BLUE SKY ADDITION TO SEDGWICK COUNTY, KANSAS

OWNER: Youal A. & Edna M Hayes Rev. Liv. Trust  
218 N. Tracy  
Wichita, KS 67203  
ZONING: R



LEGEND

● - set 5/8" rebar & "Armstrong" cap	○ - cable TV riser
⊙ - iron in trouble	○ - telephone riser
⊖ - found 3/4" iron pipe	○ - fire hydrant
⊕ - found 1/2" iron pipe	○ - elec. transformer
⊗ - found chiseled in concrete	○ - air conditioner
⊘ - found chiseled in concrete	○ - power pole
M - measured distance	○ - manhole
P - plat distance	○ - light pole
cn - calculated from measured distance	○ - gas meter
— - property line	○ - gas valve
--- - center line	○ - water meter
⋯ - easement line	○ - water valve
⋯ - setback line	○ - coniferous tree
⋯ - underground utility	○ - deciduous tree
⋯ - chainlink fence	

SCALE 1"=30'

