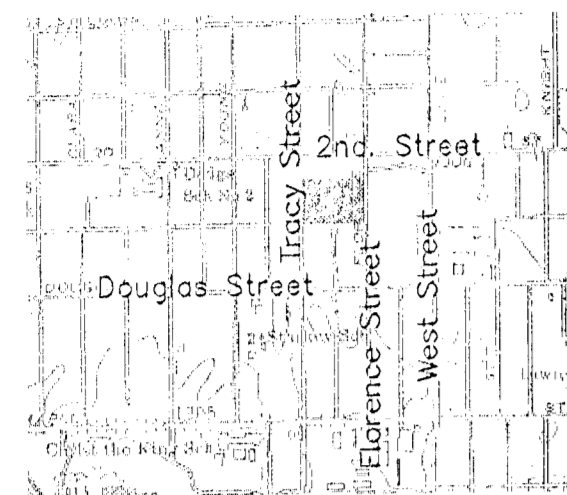


QUADRANGLE MAP

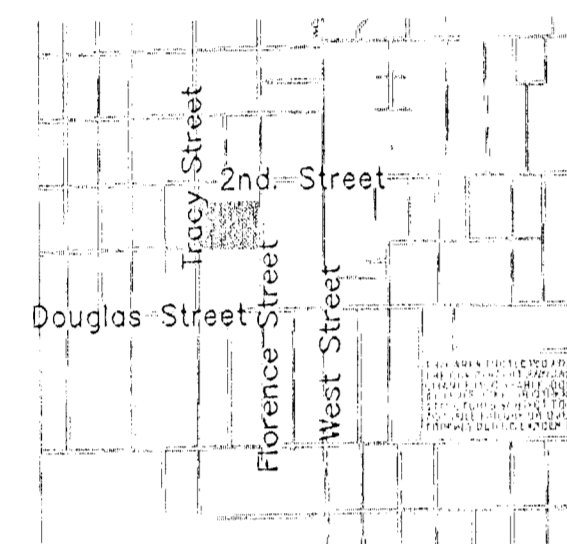
300.23, T27S, R11W



SCALE: 1" = 2,000'
WICHITA WEST QUADRANGLE

FLOOD ZONE MAP

300.23, T27S, R11W

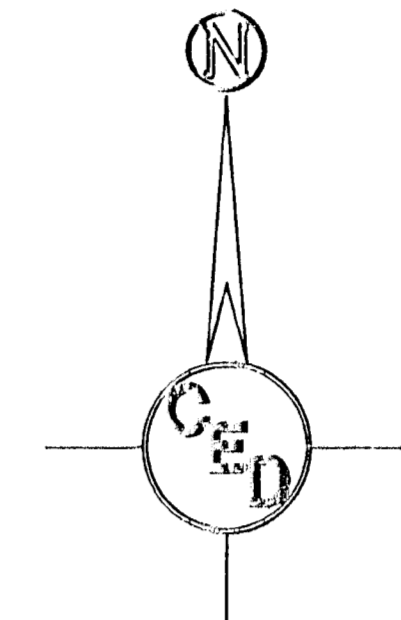
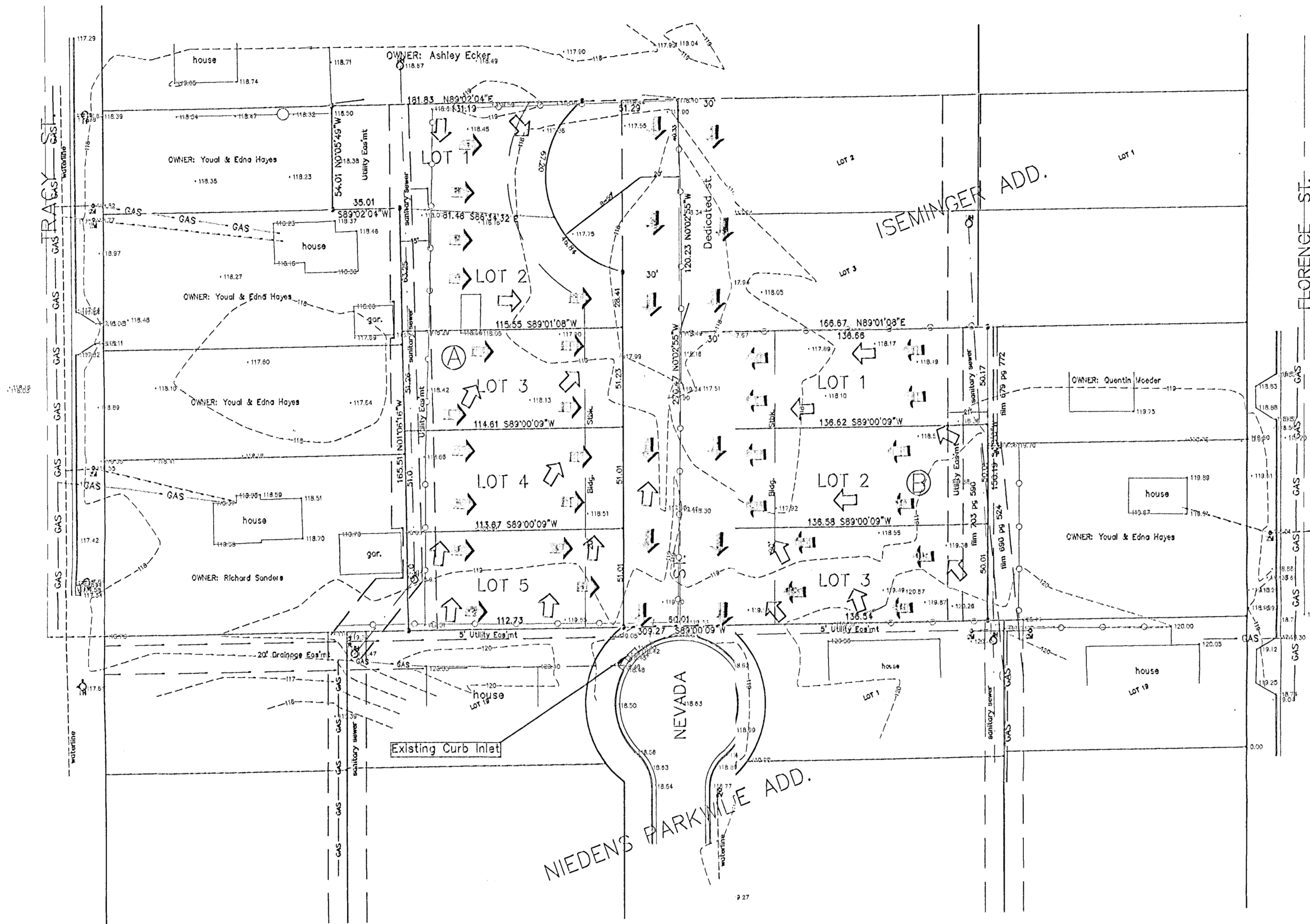


7.5 Minute Series
SCALE: 1" = 2,000'

FLOOD ZONE:

Subject property is in Zone C, as shown on Federal Emergency Management Agency (FEMA) Flood Insurance Rate Map (FIRM) for City of Wichita, Sedgwick County, KS, Panel Number 200328 0015B, effective May 13, 1985.

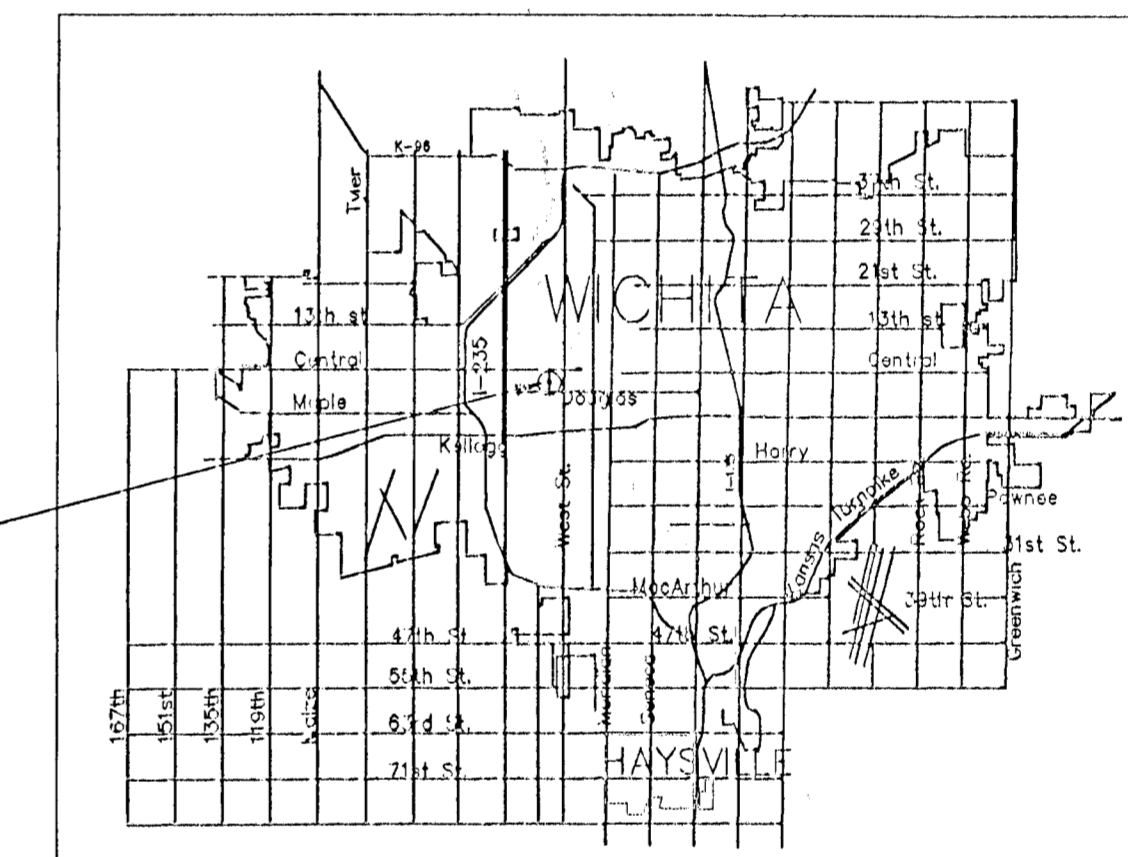
**DRAINAGE CONCEPT OF
"BLUE SKY ADDITION"**
SECTION 23, TOWNSHIP 27 SOUTH, RANGE 1 WEST OF THE 9TH P.M.
WICHITA, SEDGWICK COUNTY, KANSAS



DRAINAGE KEY
 = EXISTING FLOW DIRECTION
 = PROPOSED FLOW DIRECTION
 = EXISTING CONTOURS

GRAPHIC SCALE
 0 10 20 30 40
 (IN FEET)
 1 inch = 40 ft.

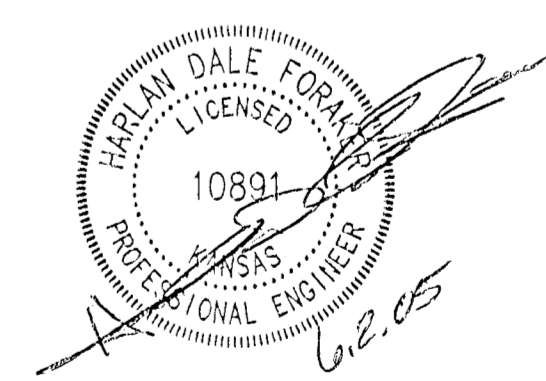
LOCATION MAP



OWNER: Youal A. & Edna M Hayes Rev. Liv. Trust
 218 N. Tracy
 Wichita, KS 67203
 ZONING: R

LEGEND

- - set 5/8" rebar & "Armstrong" cap
- ⊙ - iron in thinble
- ⊖ - found 3/4" iron pipe
- - found 1/2" iron pipe
- ⊠ - found chiseled in concrete
- ⊡ - found chiseled in concrete
- M - measured distance
- P - plot distance
- cm - calculated from measured distance
- - - - - property line
- - - - - center line
- - - - - easement line
- - - - - setback line
- - - - - underground utility
- - - - - chainlink fence
- - - - - cable TV riser
- - - - - telephone riser
- - - - - fire hydrant
- - - - - elec. transformer
- - - - - air conditioner
- - - - - power pole
- - - - - manhole
- - - - - light pole
- - - - - gas meter
- - - - - gas valve
- - - - - water meter
- - - - - water valve



DRAINAGE CONCEPT FOR
BLUE SKY ADDITION
 WICHITA, SEDGWICK COUNTY, KANSAS
 PROJ. NO.: 20051279
CERTIFIED ENGINEERING DESIGN, P.A.
 810 WEST DOUGLAS, SUITE C
 WICHITA, KANSAS 67203
 PH.(316)262-8808 FAX.(316)262-1669

DESIGNED: HDF	SCALE: 1"=40'	SHEET
DRAWN: BAP	DATE: 5/05	1
CHECKED: HDF	FILE: BLUESKY-BASE.DWG	TOTAL 1