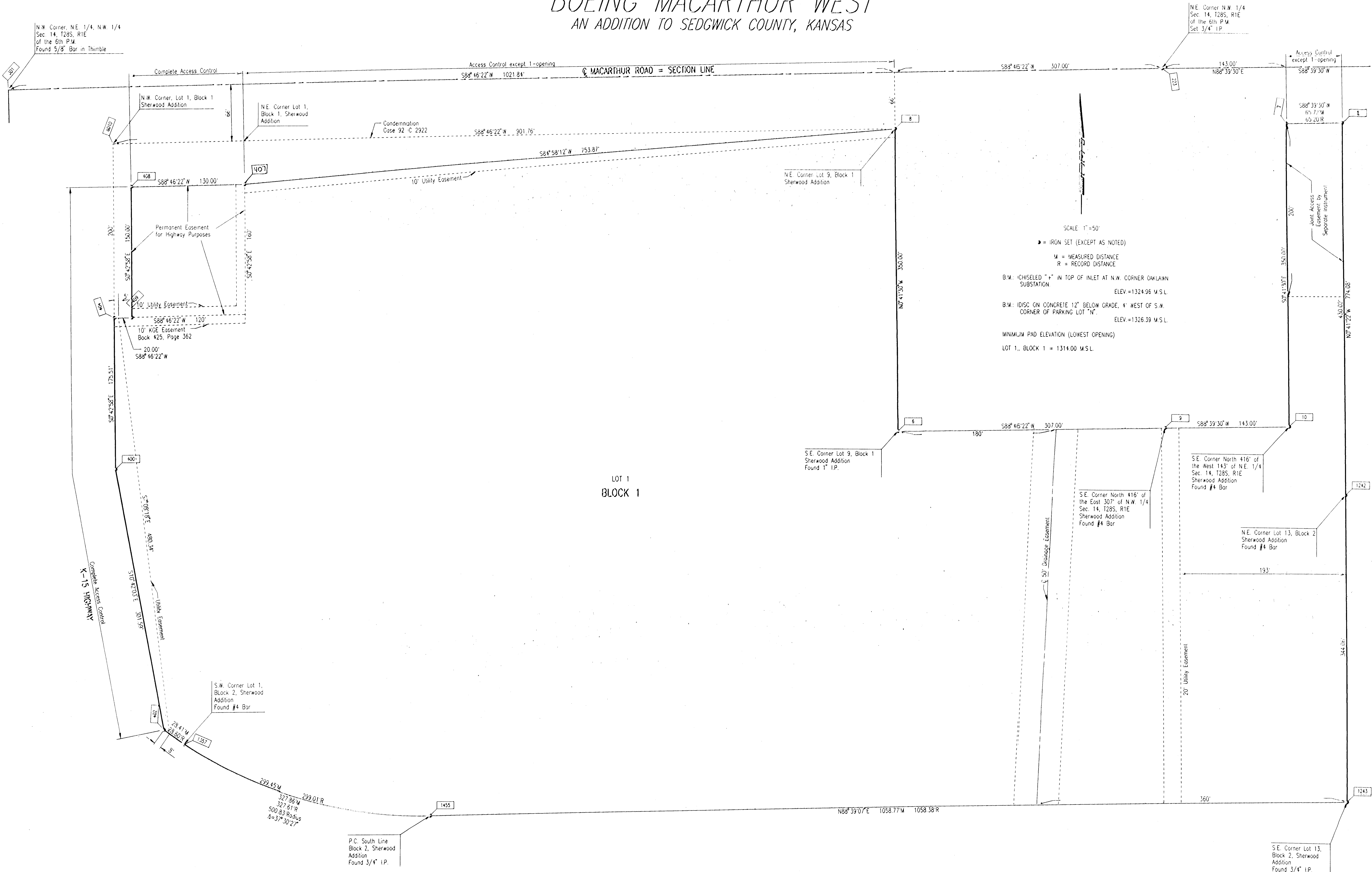


# BOEING MACARTHUR WEST

## AN ADDITION TO SEDGWICK COUNTY, KANSAS



LOT 1  
BLOCK 1

SCALE 1"=50'

▲ = IRON SET (EXCEPT AS NOTED)

M = MEASURED DISTANCE  
R = RECORD DISTANCE

B.M.: CHISELED "X" IN TOP OF INLET AT N.W. CORNER OAKLAWN SUBSTATION  
ELEV.=1324.96 M.S.L.

B.M.: IDISC ON CONCRETE 12" BELOW GRADE, 4' WEST OF S.W. CORNER OF PARKING LOT "N".  
ELEV.=1326.39 M.S.L.

MINIMUM PAD ELEVATION (LOWEST OPENING)  
LOT 1, BLOCK 1 = 1314.00 M.S.L.

N.W. Corner, NE 1/4, N.W. 1/4  
Sec. 14, T28S, R1E  
of the 6th P.M.  
Found 5/8" Bar in Thimble

NE Corner N.W. 1/4  
Sec. 14, T28S, R1E  
of the 6th P.M.  
Set 3/4" I.P.

S.E. Corner Lot 9, Block 1  
Sherwood Addition  
Found 1" I.P.

S.E. Corner North 416' of  
the East 307' of N.W. 1/4  
Sec. 14, T28S, R1E  
Sherwood Addition  
Found #4 Bar

S.E. Corner North 416' of  
the West 143' of N.E. 1/4  
Sec. 14, T28S, R1E  
Sherwood Addition  
Found #4 Bar

N.E. Corner Lot 13, Block 2  
Sherwood Addition  
Found #4 Bar

S.W. Corner Lot 1,  
Block 2, Sherwood  
Addition  
Found #4 Bar

S.E. Corner Lot 13,  
Block 2, Sherwood  
Addition  
Found 3/4" I.P.

P.C. South Line  
Block 2, Sherwood  
Addition  
Found 3/4" I.P.

OSNR: GJM OPER: GJM SCALE: 1"=50.00  
 Q:\1997\197400\04\BUBBLE.DWG 04-08-1999 01:57:31 pm