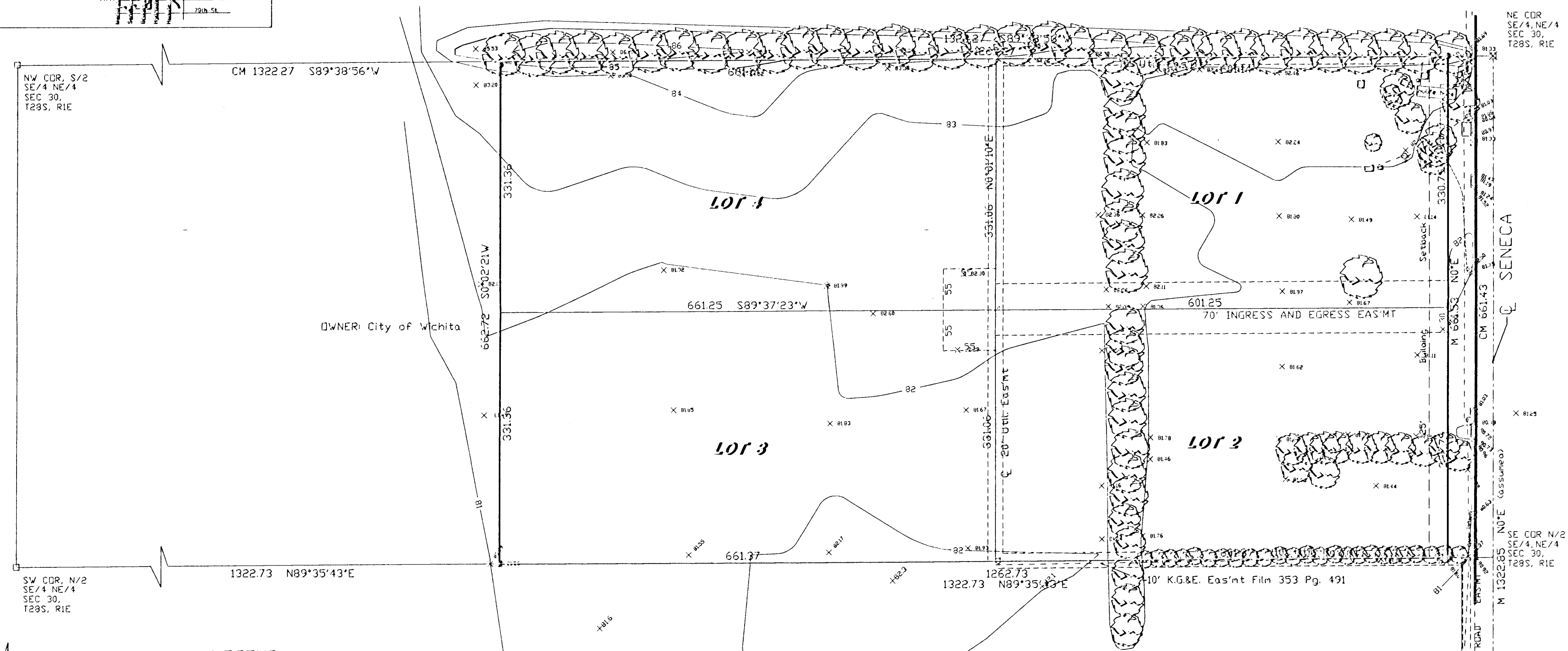


PRELIMINARY PLAT BOOHER 2ND ADDITION TO SEDGWICK COUNTY, KANSAS

OWNER: James Family Trust
1110 Greenfield
Wichita, KS 67217
Zoning: SF-20

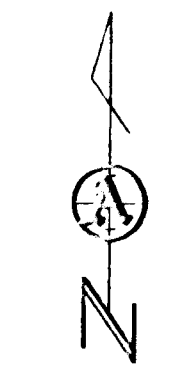
250 N. WILKINSON
WICHITA, KANSAS
PH - (913) 269-0092
FAX - (913) 269-0092



LEGEND

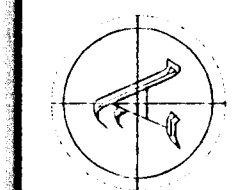
- ⊙ - 5/8" bar w/ Armstrong cap set
- - 3/4" iron pipe found
- - stone found
- ⊗ - 5/8" rebar found
- - 1/2" iron pipe found
- M - measured distance
- D - deed distance
- ⊕ - gas meter
- ⊕ - telephone riser
- ⊕ - power pole
- ⇨ - flow direction

- ### UTILITY NOTES:
- 1) The electric, telephone, and cable TV lines are overhead in Seneca street R/W.
 - 2) City of Wichita water is 1/2 mile north of site.
 - 3) City of Wichita sanitary sewer is 1/2 mile north of site.
 - 4) City of Haysville water is 1/2 mile south of site.
 - 5) City of Haysville sanitary sewer is 1/2 mile south of site.



SCALE 1"=100'
WD# 24882-5

ARMSTRONG LAND SURVEY, P.A.



NE COR
SE/4, NE/4
SEC 30,
T28S, R1E

SE COR N/2
SE/4, NE/4
SEC 30,
T28S, R1E

SE COR
NE/4
SEC 30,
T28S, R1E