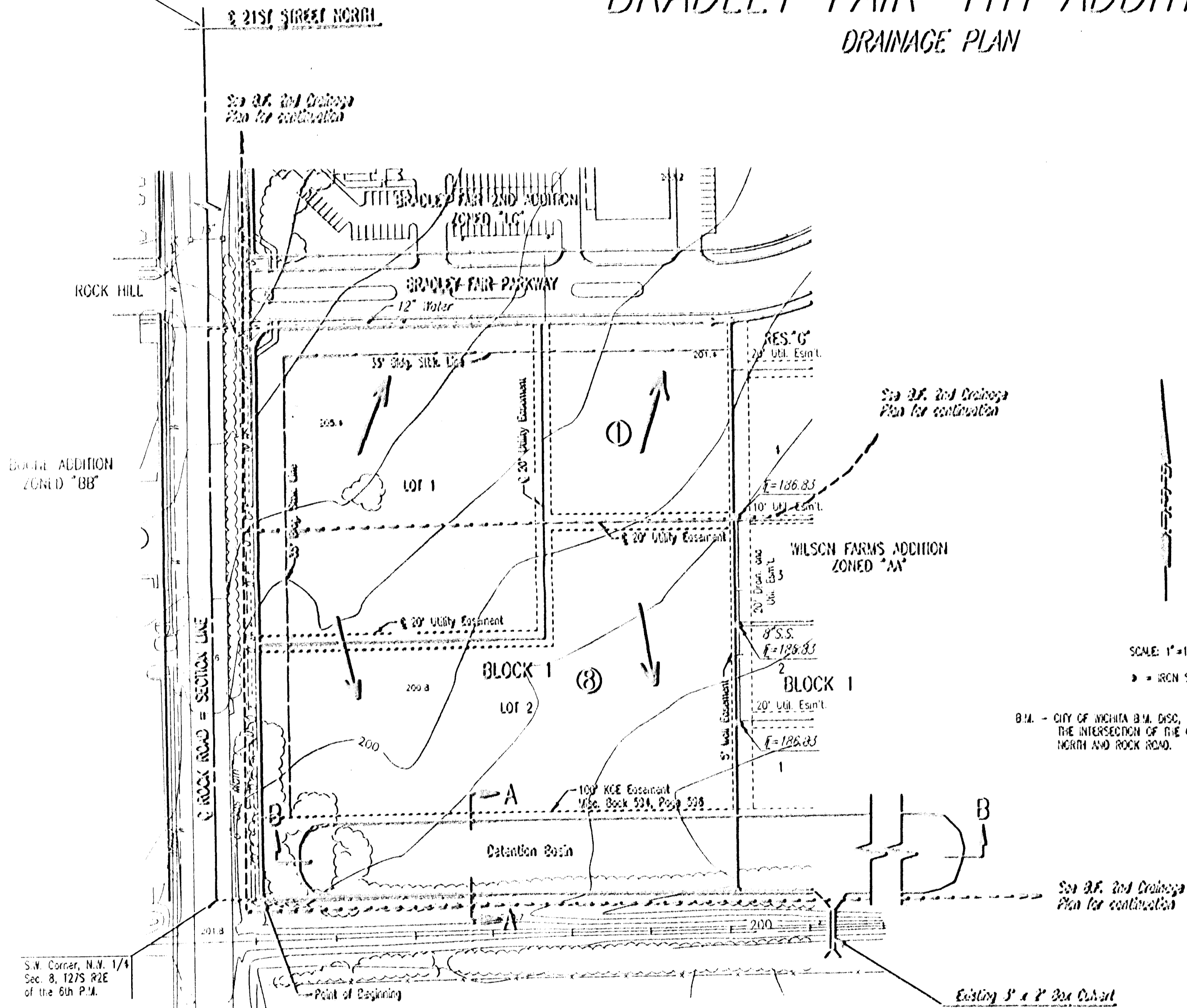


N.W. Corner  
Sec. 8, 127S R2E  
of the 6th P.M.

# BRADLEY FAIR 4TH ADDITION DRAINAGE PLAN



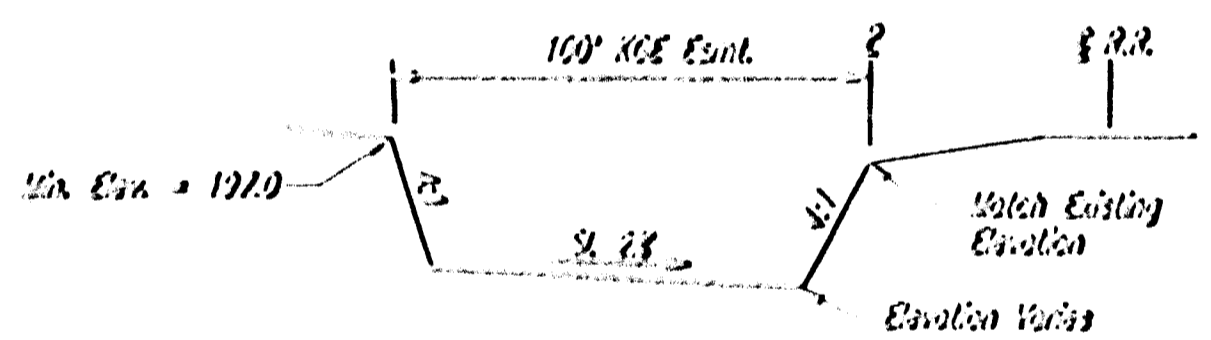
THE PORT OF LAND BEING PLANNED AS BRADLEY FAIR 4TH ADDITION WAS PREVIOUSLY INCLUDED AS PART OF THE DRAINAGE PLAN FOR BRADLEY FAIR 2ND ADDITION. ALL INFORMATION SHOWN ON THIS DRAINAGE PLAN HAS BEEN TAKEN FROM THE REFERENCED DRAINAGE PLAN, INCLUDING DRAINAGE BASIN DELINEATION/DESIGNATION AND DRAINAGE BASIN SIZE AND SHAPE.

IT WAS ASSUMED IN THE R.F. 2ND DRAINAGE PLAN THAT THE PORTION OF THIS PLAT SHOWN IN BASIN 1 WILL BE GRADED SUCH THAT RUNOFF WILL BE DIRECTED TO BRADLEY FAIR PARKWAY, AND ULTIMATELY TO POND NO. 1, AS SHOWN IN THE R.F. 2ND DRAINAGE PLAN.

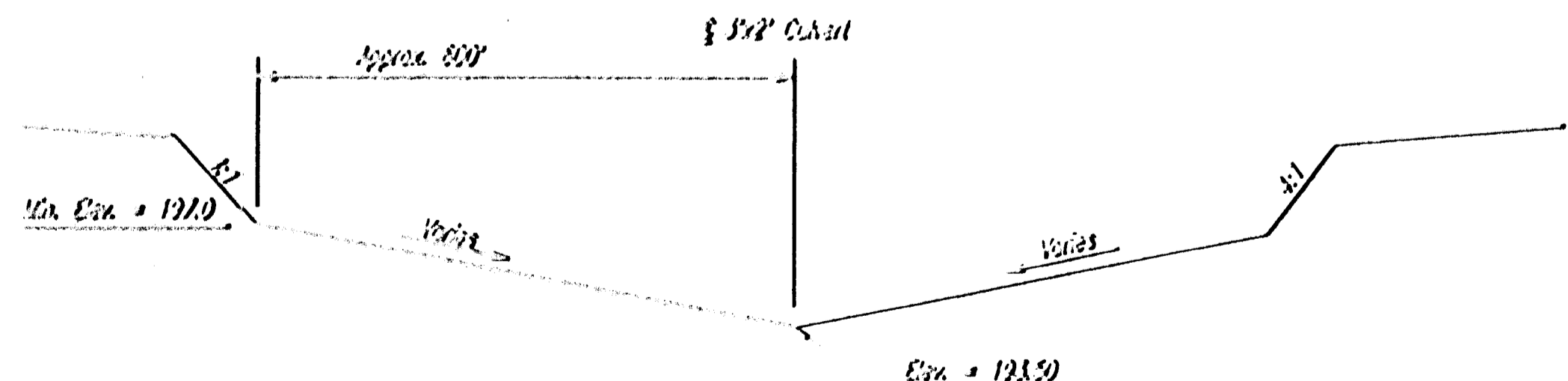
RUNOFF FROM BASIN 2 WILL BE DIRECTED TO THE PROPOSED DRAINAGE BASIN LOCATED IN THE 100' RCE EASEMENT. THE TYPICAL SECTIONS FOR THE POND ARE SHOWN ON THIS PLAN. RUNOFF RATES HAVE NOT BEEN COMPUTED FOR THIS PLAT AS THIS IS ONLY A PORTION OF BASIN 2 AS SHOWN IN THE R.F. 2ND DRAINAGE PLAN. PLOW DATA FOR THE PROPOSED DRAINAGE BASIN ARE AS FOLLOWS:  
 2 in = 11 cfs (100-year)  
 3 in = 20 cfs (100-year)  
 4 in = 33 cfs (100-year)  
 DESIGN = 100% (FROM POND-1 PRECIPITATION IN R.F. 2ND D.P. FOR BASIN 2)  
 THE PROPOSED DRAINAGE BASIN HAS MORE THAN SUFFICIENT STORAGE AVAILABLE TO LIMIT THE DEVELOPED RUNOFF RATE TO THE PRE-DEVELOPED RATE.

SCALE: 1" = 100'  
 -●- IRON SET

B.M. - CITY OF WICHITA B.M. DISC. 45' NORTH AND 18' EAST OF THE INTERSECTION OF THE CENTERLINES OF 21ST STREET NORTH AND ROCK ROAD.  
 ELEV. 211.563 CITY DATUM



SECTION A-A



SECTION B-B

- LEGEND**
- - - DRAINAGE BASIN BOUNDARY
  - ⊙ DRAINAGE BASIN DESIGNATOR
  - DRAINAGE FLOW DIRECTION

Existing 3' x 2' Box Culvert  
 { H = 193.50  
 { S = 193.19

DSNR: DAR OPER: DAR SCALE: 1"=100.00  
 C:\1997\97807\temp\ 1.1-18-1997 4:40:46 pm