



Ruggles & Bohm, P.A.

Engineering, Surveying, Land Planning
924 N. Main
Wichita, Kansas 67203

Date: Monday, December 09, 2002

MEMO

To: Neil Cable, P.E.
City Engineer
City of Wichita

Description:

- Confirmation
Transmittal
Transmittal under separate cover by

From: Tom Ruggles

Purpose:

- Approval
Review & comment
Use
Other
Distribution
Information
Record

Project: Brentwood South Addition

Enclosures/Attachments:

- Prints
Originals
Diskettes containing
Change Order
Shop Drawings
Other

RB Project No.: 1020P

Other Project Reference No.:

Table with 2 columns: Copies, Description. Rows include: 1 Certification of Correction (2 pages), 1 Half-scale copy of plat for information, 0, 0.

Remarks: This certificate is for the purpose of correcting the name of Stoneybrook Circle (highlighted on the plat copy) to Stoneybrook Court. Please call if you have any questions or need further information.

RECEIVED

DEC 10 2002

Copies to: CITY - ENGINEERING

If checked below, please:

- Acknowledge receipt of enclosures
Return enclosures to us.

Signed

If Enclosures are not as noted above, please inform us immediately
Phone (316) 264-8008 Fax (316) 264-4621

**CERTIFICATION OF CORRECTION
OF
STREET NAMES**

**In the plat of
"BRENTWOOD SOUTH ADDITION",
Wichita, Sedgwick County, Kansas.**

Change street named "Stoneybrook Cir." to "Stoneybrook Ct."

State of Kansas)
) SS
Sedgwick County)

We, Ruggles & Bohm, P.A., Surveyors in aforesaid county and state do hereby certify that on the plat of Brentwood South Addition, Wichita, Sedgwick County, Kansas, the street named "Stoneybrook Cir." needs to be changed to "Stoneybrook Ct."

Ruggles & Bohm, P.A.

Date: 12-4-02

Thomas C. Ruggles Surveyor
Thomas C. Ruggles RLS #940

Owners Acknowledgement:

Brentwood Development, Inc

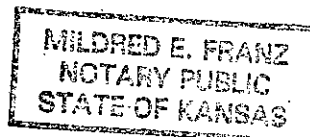
Stephen G. Miller President
Stephen G. Miller

State of Kansas)
) SS
Sedgwick County)

The foregoing instrument acknowledged, before me, this 9th day December, 2001, by Stephen G. Miller, President of Brentwood Development, Inc., on behalf of the Corporation.

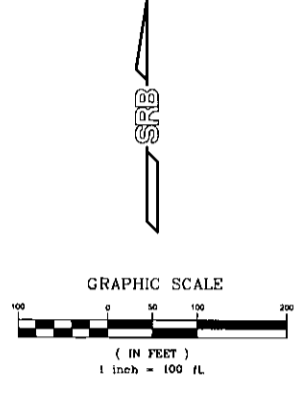
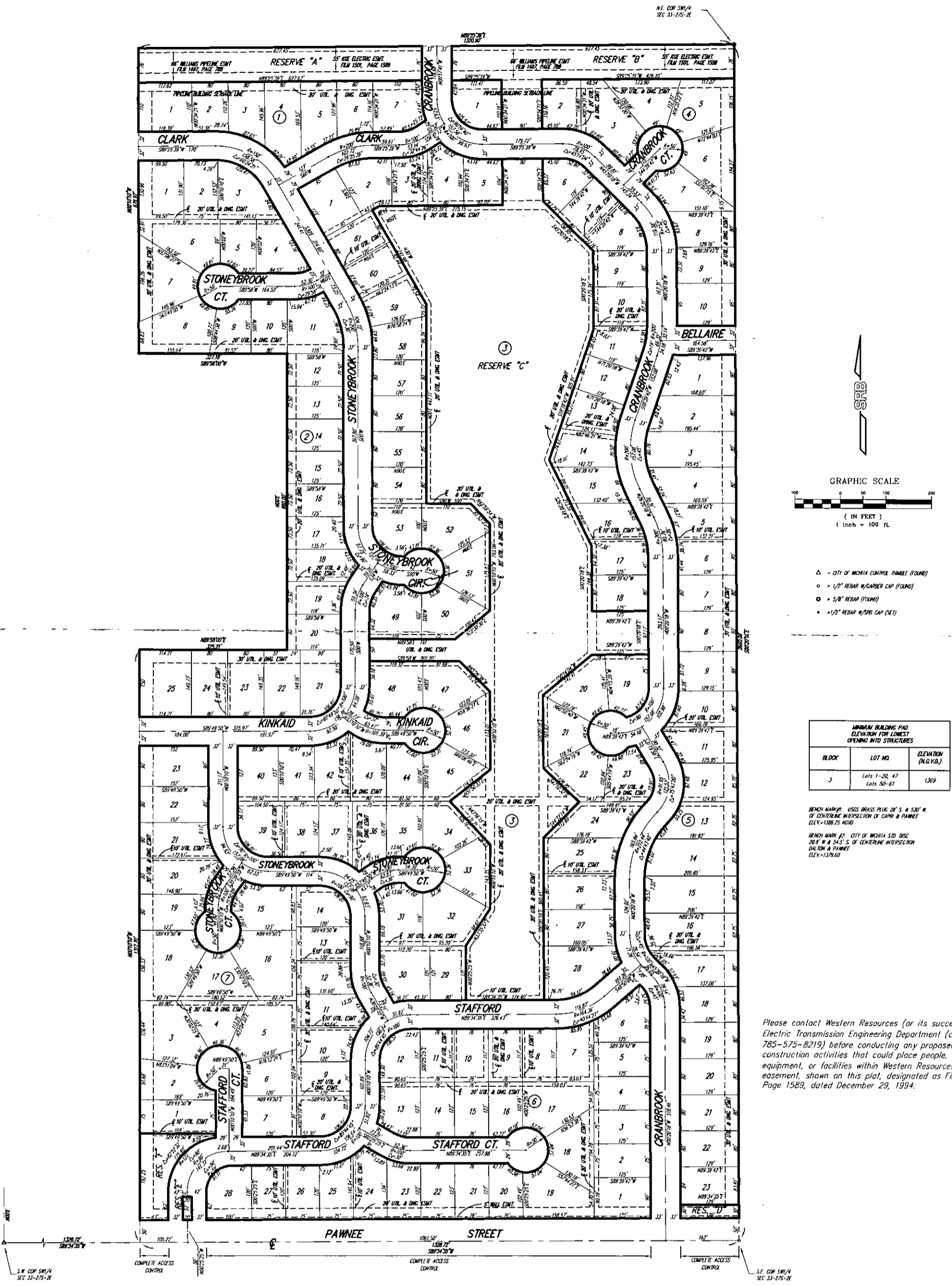
My App't. Exp. 02-13-2003

Mildred E. Franz Notary Public



BRENTWOOD SOUTH ADDITION

WICHITA, SEDGWICK COUNTY, KANSAS



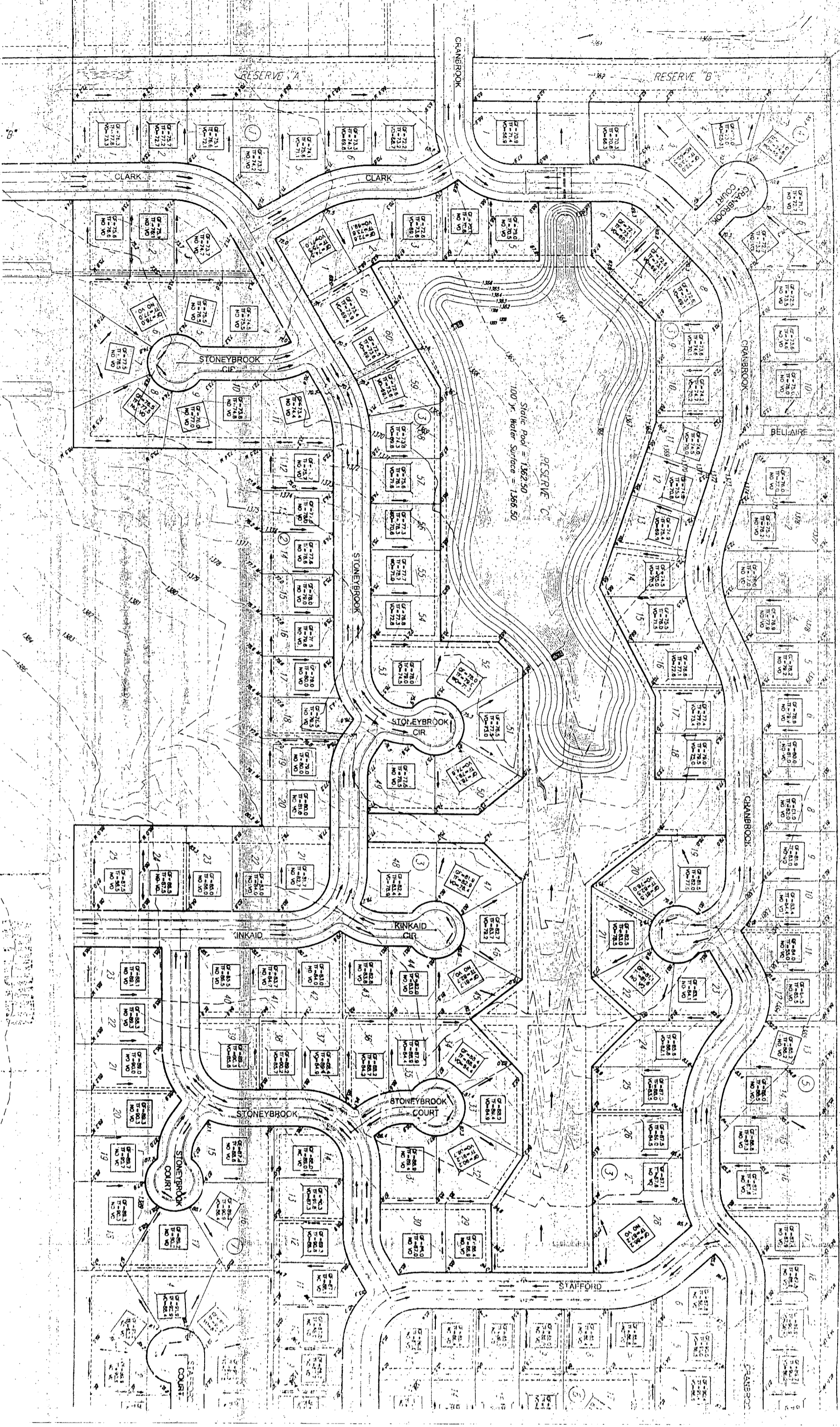
- △ - CITY OF WICHITA CONTROL TABLE (FOUND)
- - 1/2" REBAR W/ CARBOR CAP (FOUND)
- - 3/8" REBAR (FOUND)
- - 1/2" REBAR W/ 5/8" CAP (SET)

MINIMUM BUILDING PAD ELEVATION FOR LOWEST CRAWLING INTO STRUCTURES		
BLOCK	LOT NO.	ELEVATION (M.S.L.)
3	Lots 1-20, 47	1389
	Lots 50-61	

BENCH MARK 1: USGS BRASS PILE 28" S & 532' W OF CENTERLINE INTERSECTION OF CARRO & PAWNEE ELEV. = 1388.75 M.S.L.

BENCH MARK 2: CITY OF WICHITA STD. DISC 20.6" W & 545' S OF CENTERLINE INTERSECTION ONEIOWA & PAWNEE ELEV. = 1378.60

Please contact Western Resources (or its successor) Electric Transmission Engineering Department (currently 785-575-8219) before conducting any proposed construction activities that could place people, equipment, or facilities within Western Resources' easement, shown on this plat, designated as Film 1501, Page 1589, dated December 29, 1994.



10110

note

134.0

10110

note

134.0

10110

note

134.0