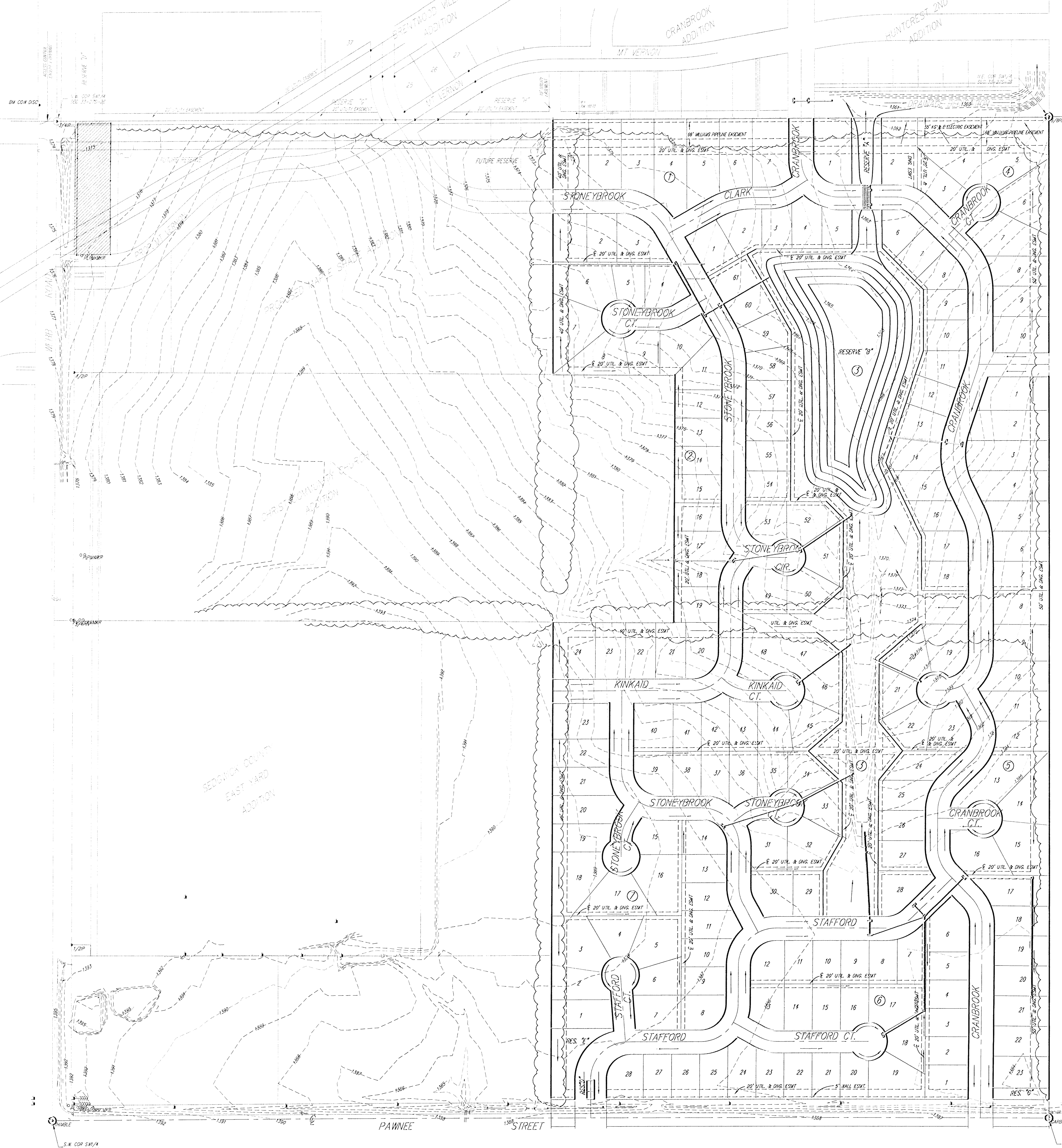


# DRAINAGE CONCEPT BRENTWOOD SOUTH ADDITION

WICHITA, SEDGWICK COUNTY, KANSAS

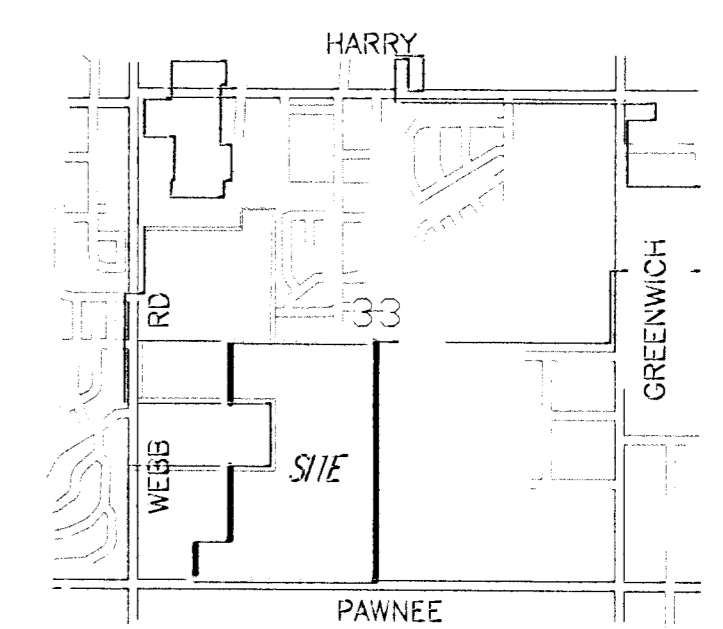


A tract of land being part of the N.W. Cor. of the SW1/4, Sec. 33, TWP. 27-S, R-2-E, of the 6th P.M., Sedgwick County, Kansas.

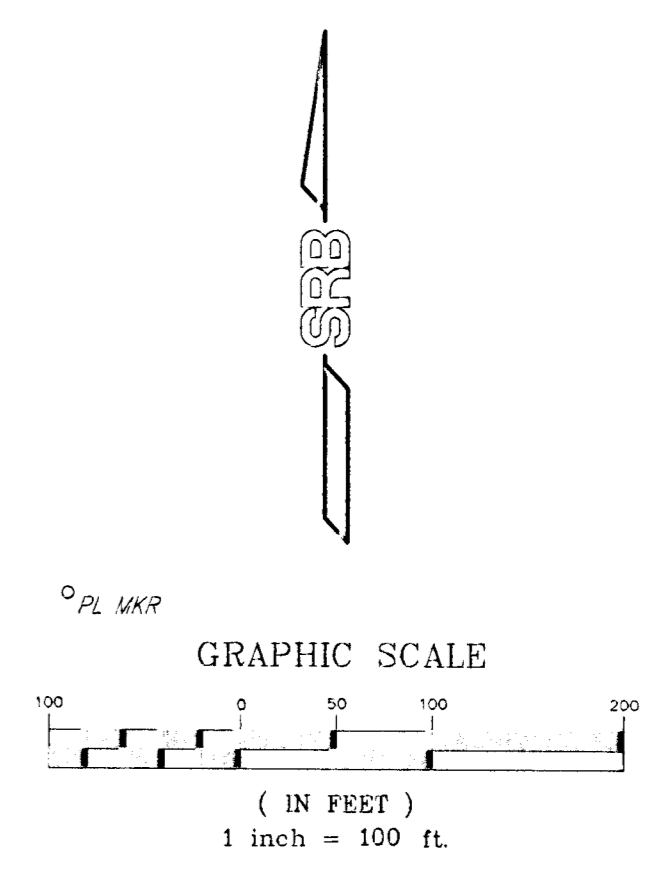
**NOTES:**  
Reserves "C", "D", shall permit entry features/monuments, signs, barns, and utilities confined to easements, irrigation, walls, walks, lighting, landscaping, irrigation, walls, walks, lighting, landscaping.  
Reserve "A", "B", and "E" shall allow signs, recreational related structures, drainage and drainage structures, playground equipment, picnic tables, benches, swimming pools, and small pool structures, parking lots, ponds, bridges, gazebos, restroom facilities, and utilities confined to easements.

BRENTWOOD DEVELOPMENT  
527 N. FORESTVIEW  
WICHITA, KS 67235  
PH 723-6600

UPDATED



VICINITY MAP  
NO SCALE



S.W. COR SW1/4  
SEC 33-27S-2E

S.E. COR SW1/4  
SEC 33-27S-2E