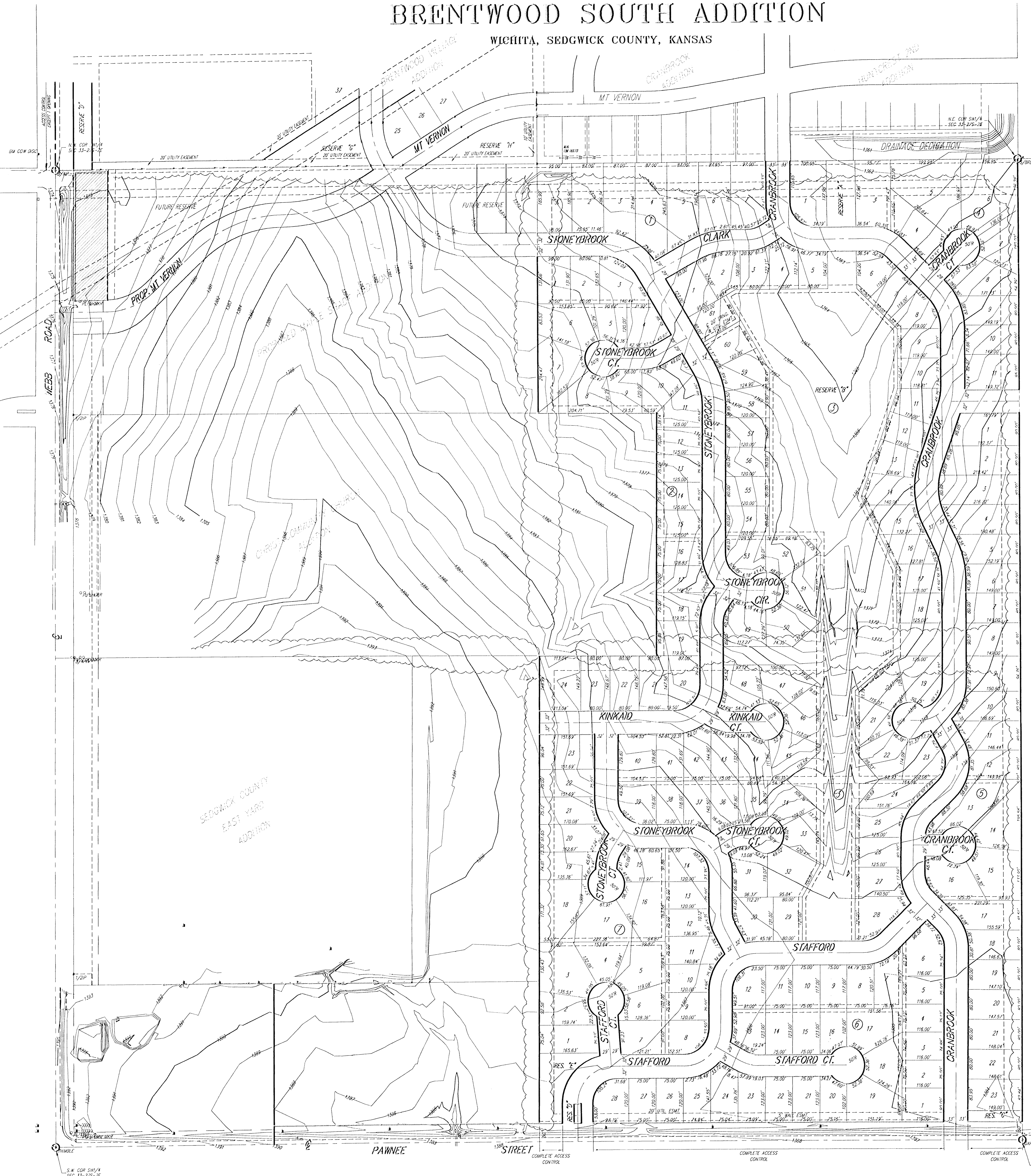


# PRELIMINARY PLAT BRENTWOOD SOUTH ADDITION

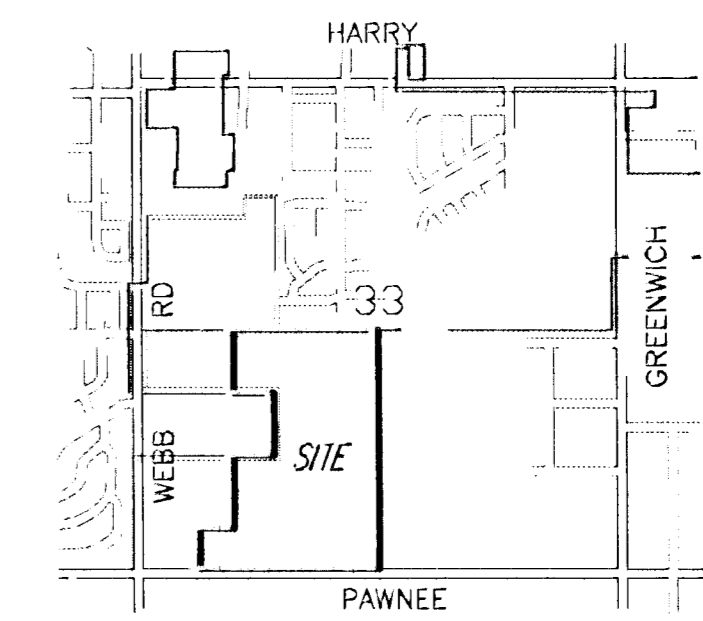
WICHITA, SEDGWICK COUNTY, KANSAS



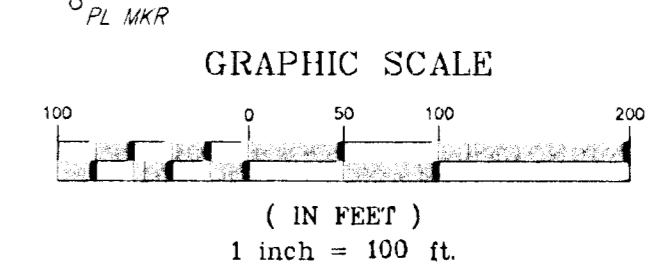
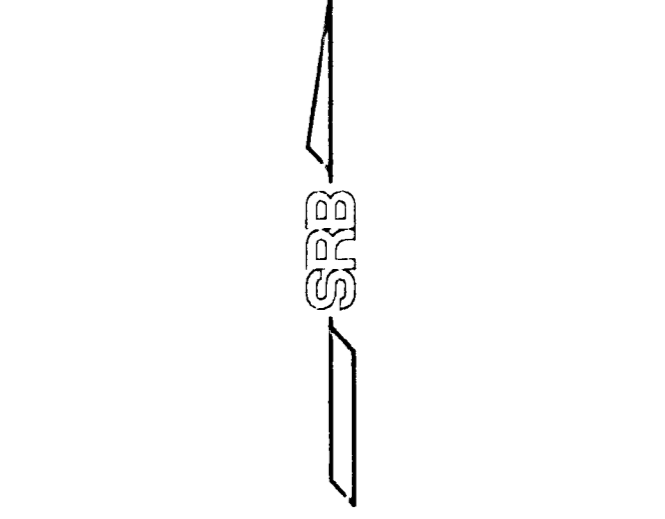
A tract of land being part of the N.W. Cor. of the SW 1/4, Sec. 33, T19P-27S-R-2-E, of the 6th P.M., Sedgwick County, Kansas.

**NOTES:**  
 Reserves "C", "D", and "E" shall permit entry features/monuments, signage, barns, and utilities confined to easements, irrigation, walls, walks, lighting, landscaping, irrigation, walls, walks, lighting, landscaping.  
 Reserve "A", "B", and "F" shall allow signage, recreational related structures, drainage and drainage structures, playground equipment, picnic tables, barns, swimming pools, and small pool structures, parking lots, ponds, bridges, gazebos, restroom facilities, and utilities confined to easements.

BRENTWOOD DEVELOPMENT  
 527 N. FORESTVIEW  
 WICHITA, KS 67235  
 PH 729-6600



VICINITY MAP  
NO SCALE



- LEGEND**
- ⊙ TELE. PED ..... TELEPHONE PEDSTAL
  - ▲ ..... POWER POLE
  - ⊖ ..... LUMP ANCHOR
  - ⊔ ..... SIGN
  - ..... PETROLEUM PIPELINE MARKER
  - ..... FENCE
  - ..... TREE ROW