

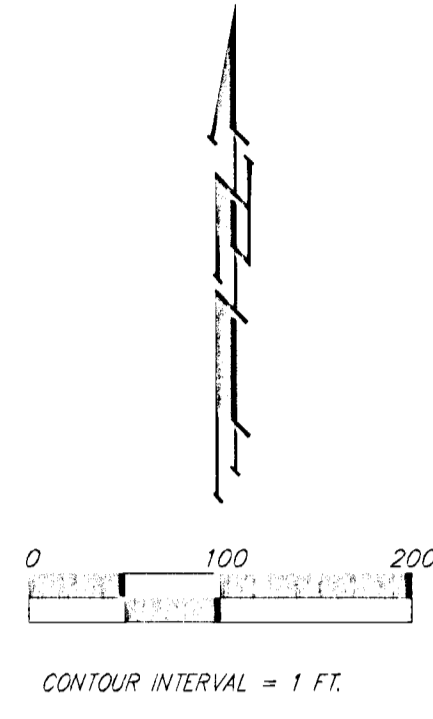
DRAINAGE CONCEPT THE GLEN AN ADDITION TO SEDGWICK COUNTY, KANSAS

OWNER:
SCOTT VENTURES LLC
21 SCOTTSDALE
WICHITA, KS 67230

LEGAL DESCRIPTION:
ALL THAT PORTION OF THE NE1/4 OF SEC. 23, TWP. 27-S, R-2-E OF THE 6TH P.M., SEDGWICK COUNTY, KANSAS, LYING SOUTH AND EAST OF THE SOUTHERLY RIGHT-OF-WAY LINE OF THE KANSAS TURNPIKE AS DESCRIBED IN THAT CERTAIN CONDEMNATION IN DISTRICT COURT OF SEDGWICK COUNTY, KANSAS, STATED AS CASE NO. A-54126, EXCEPT A TRACT OF LAND IN THE NE1/4 OF SEC. 23, TWP. 27-S, R-2-E OF THE 6TH P.M., SEDGWICK COUNTY, KANSAS DESCRIBED AS FOLLOWS: COMMENCING AT THE NE CORNER OF SAID NE1/4; THENCE ON AN ASSUMED BASIS OF BEARING OF S00°06'24"W ALONG THE EAST LINE OF SAID NE1/4, 849.22 FEET TO THE INTERSECTION OF THE SOUTHERLY RIGHT-OF-WAY LINE OF KANSAS TURNPIKE AUTHORITY, CONDEMNATION CASE A-54126, AND FOR A POINT OF BEGINNING; THENCE CONTINUING S00°06'24"W ALONG THE EAST LINE OF SAID NE1/4, 1173.38 FEET; THENCE N89°53'36"W PERPENDICULAR TO THE EAST LINE OF SAID NE1/4, 754.19 FEET; THENCE N08°39'27"W 487.19 FEET, MORE OR LESS, TO A POINT ON THE SOUTHERLY RIGHT-OF-WAY LINE OF KANSAS TURNPIKE AUTHORITY, CONDEMNATION CASE A-54126; THENCE NORTHEASTERLY ALONG SAID SOUTHERLY RIGHT-OF-WAY LINE, BEING A CURVE TO THE LEFT HAVING A RADIUS OF 2008.11 FEET, A DISTANCE OF 1233.66 FEET TO THE P.I. OF SAID CURVE; THENCE N89°53'24"E, 121.17 FEET TO THE POINT OF BEGINNING, SUBJECT TO ROAD RIGHT-OF-WAY AGREEMENTS ON 143RD STREET EAST (FILM 876, PAGE 450), (FILM 876, PAGE 448), OUI CLAIM DEED (FILM 843, PAGE 1441), AND RIGHT-OF-WAY AGREEMENT RECORDED 8-12-58.

BENCHMARK:
"□" CUT ON TOP OF CURB, NORTH SIDE SIEFKES, NW OF CENTER LINE OF SIEFKES CT., SHADYBROOK MEADOW ADDITION, ELEV. = 1322.59 M.S.L.

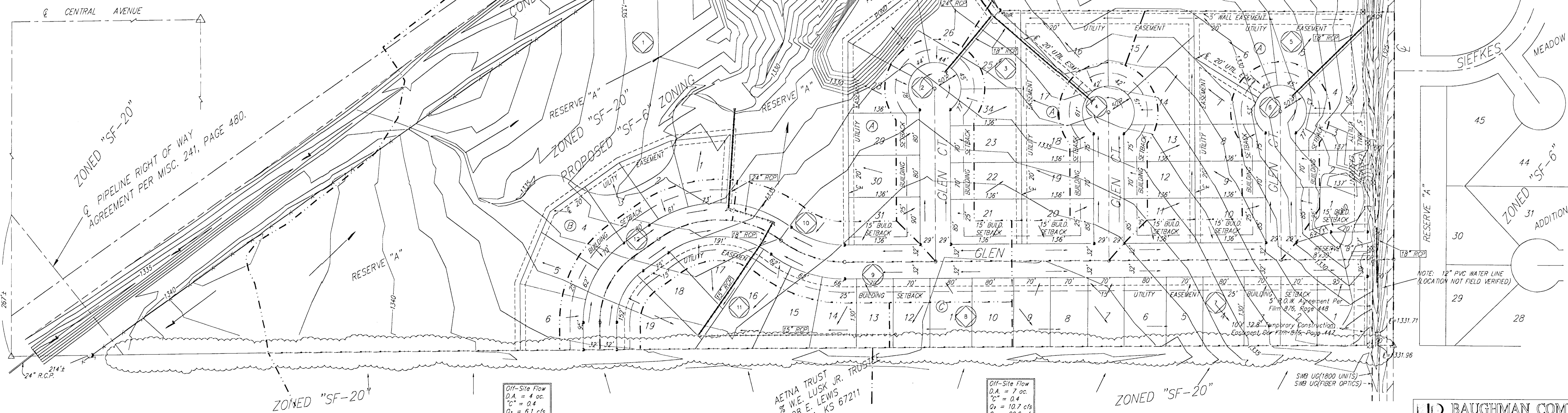
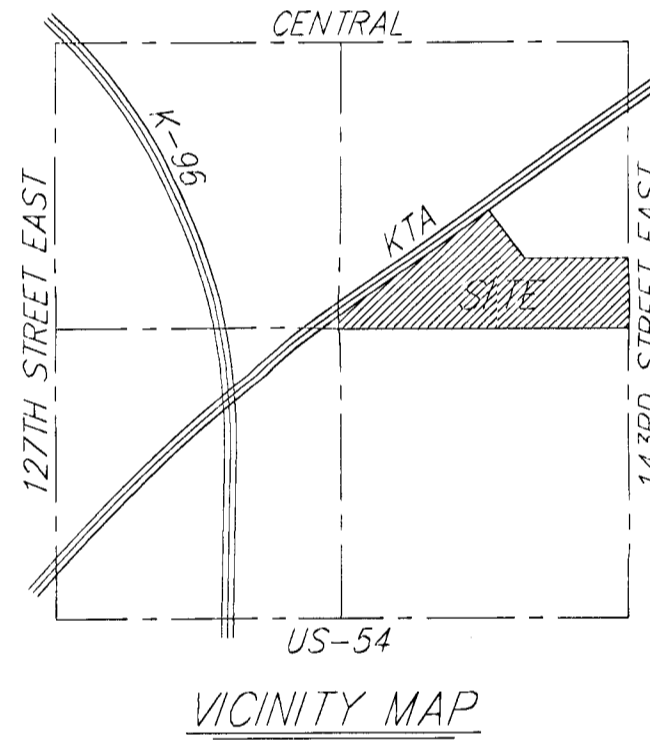
NOTE:
RESERVE "A" SHALL BE RESERVED FOR A PRIVATE GOLF COURSE AND PRIVATE GOLF COURSE RELATED FACILITIES, AND UTILITIES AS CONFINED TO EASEMENTS.



Drainage Area	Area (Acres)	Cs	Cw	Ts	Tc	Q (cfs)	Qp (cfs)	Qm (cfs)
1	21.8	0.40	0.40	15	3.83	7.36	33.4	64.2
2	1.5	0.54	0.54	15	3.83	7.36	31	6.0
3	1.9	0.50	0.50	15	3.83	7.36	35	7.0
4	1.4	0.54	0.54	15	3.83	7.36	29	5.6
5	3.6	0.50	0.50	15	3.83	7.36	69	13.2
6	1.6	0.54	0.54	15	3.83	7.36	33	6.4
7	2.7	0.52	0.52	15	3.83	7.36	54	10.3
8	0.5	0.50	0.50	15	3.83	7.36	1.5	2.9
9	1.6	0.54	0.54	15	3.83	7.36	33	6.4
10	0.6	0.54	0.54	15	3.83	7.36	1.2	2.4
11	1.3	0.50	0.50	15	3.83	7.36	2.5	4.8
12	0.8	0.54	0.54	15	3.83	7.36	1.7	3.2

Note: Peak flow rate from drainage basin #1 will not be increased under the proposed development.

- = #4 BAUGHMAN REBAR (SET)
- △ = SECTION CORNER (FOUND)
- ⊠ = #4 P.E.C. REBAR (FOUND)
- (D) = DESCRIBED
- (M) = MEASURED
- (C) = CALCULATED



Off-Site Flow
D.A. = 4 ac.
C_s = 0.4
C_w = 6.1 cfs
Q_m = 11.8 cfs

ATNA TRUST
% W.E. LUSK JR. TRUST
1608 E. LEWIS
WICHITA, KS 67211

Off-Site Flow
D.A. = 7 ac.
C_s = 0.4
C_w = 10.7 cfs
Q_m = 20.8 cfs

SMB UG(1800 UNITS)
SMB UG(1800 OPTICS)