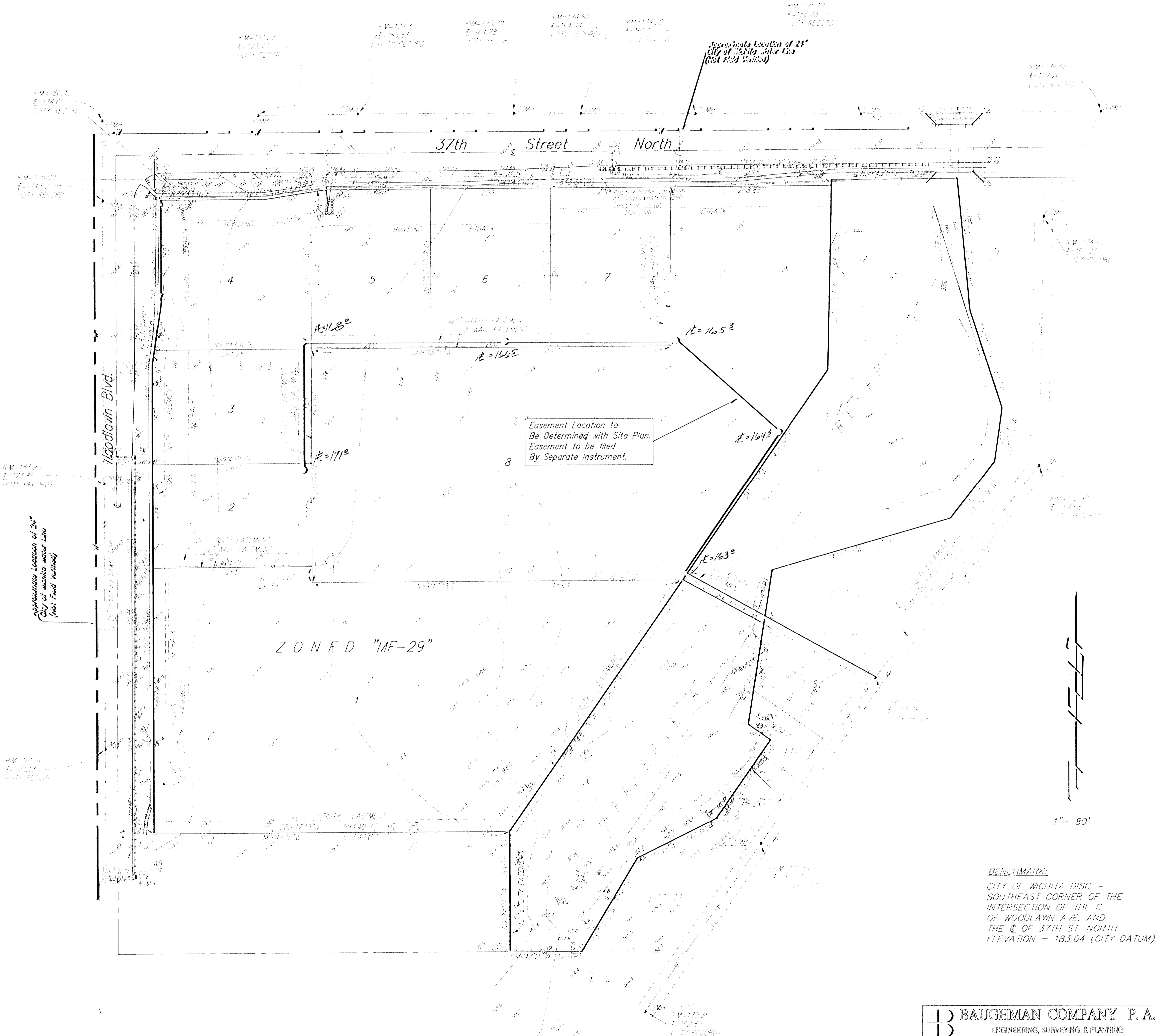


UTILITY PLAN *Spot*  
**BRUSHCREEK BAND ADDITION**  
 WICHITA, SEDGWICK COUNTY, KANSAS



**BENCHMARK:**  
 CITY OF WICHITA DISC -  
 SOUTHEAST CORNER OF THE  
 INTERSECTION OF THE C  
 OF WOODLAWN AVE. AND  
 THE C OF 37TH ST. NORTH  
 ELEVATION = 183.04 (CITY DATUM)