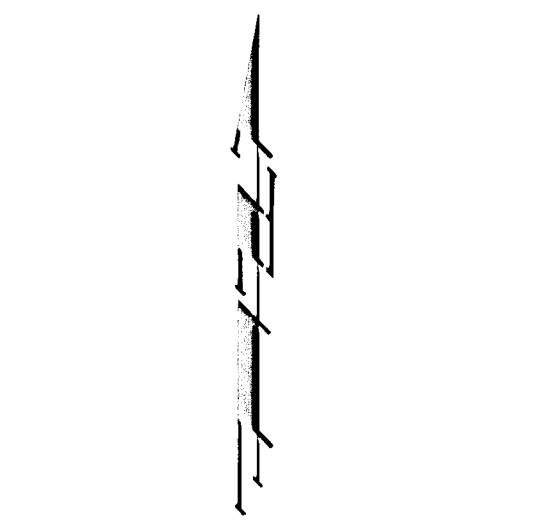


# DRAINAGE PLAN BUFF CAR WASH ADDITION WICHITA, SEDGWICK COUNTY, KANSAS



DATE OF PREPARATION: 9 FEBRUARY, 2004  
DATE OF TOPOGRAPHY: 26 JANUARY, 2004

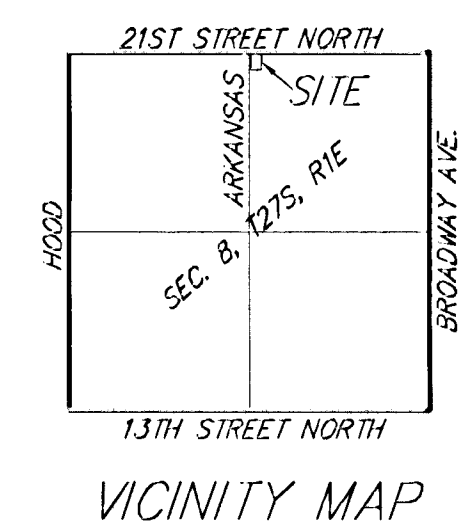
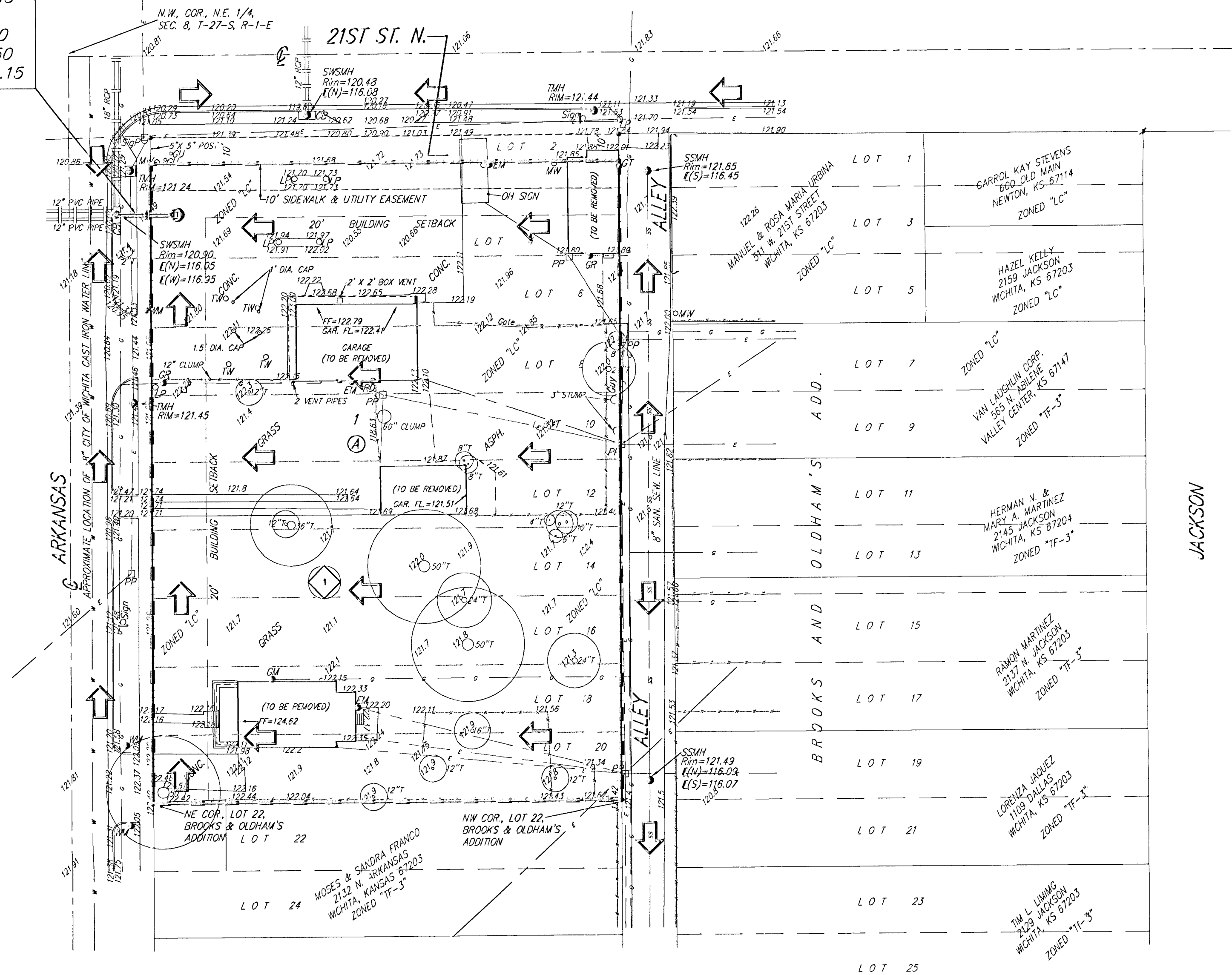
- CB = Catch Basin
- EM = Electric Meter
- o-FH = Fire Hydrant
- CR = Gas Regulator
- GM = Gas Meter
- GT = Gas Test
- GU = Guard Post (Ballard)
- CA = Curb Anchor
- CV = Gas Valve
- LP = Light Pole
- MW = Monitoring Well
- PP = Power Pole
- RD = Roof Drain
- ES = Signal Pole
- Sign = Sign
- SSMH = Sanitary Sewer Manhole
- SWSMH = Stormwater Sewer Manhole
- TW = Test Well
- T = Tree
- TMH = Traffic Manhole
- WM = Water Meter

- ▲ = #4 REBAR w/ "BAUGHMAN" CAP (FOUND)
- = #4 REBAR w/ "BAUGHMAN" CAP (SET)
- = 1" IRON PIPE IN TUMBLE (FOUND)

**CONTRACT PURCHASER:**  
Larry D. Ouwils  
110 Mayfair Ct.  
Garden City, Kansas 67846  
800-468-3635

**LEGAL DESCRIPTION:**  
Lots 2, 4, 6, 8, 10, 12, 14, 16, 18 and 20, on  
Arkansas Avenue, in Brooks and Oldham's Addition to  
the City of Wichita, Sedgwick County, Kansas.

Prop. 12" SWS  
w/Inlet  
Top = 121.00  
FL in = 16.50  
FL out = 16.15



Buff Car Wash Addition -- Rational Method -- Q = c<sub>1</sub>a -- t<sub>c</sub> = 15 min.

Basin	Area	C <sub>2</sub>	C <sub>3</sub>	C <sub>100</sub>	Q <sub>2</sub> (cfs)	Q <sub>5</sub> (cfs)	Q <sub>100</sub> (cfs)
1	0.93	0.84	0.85	0.91	3.0	3.6	6.2
<b>TOTAL</b>	<b>0.93</b>				<b>3.0</b>	<b>3.6</b>	<b>6.2</b>

