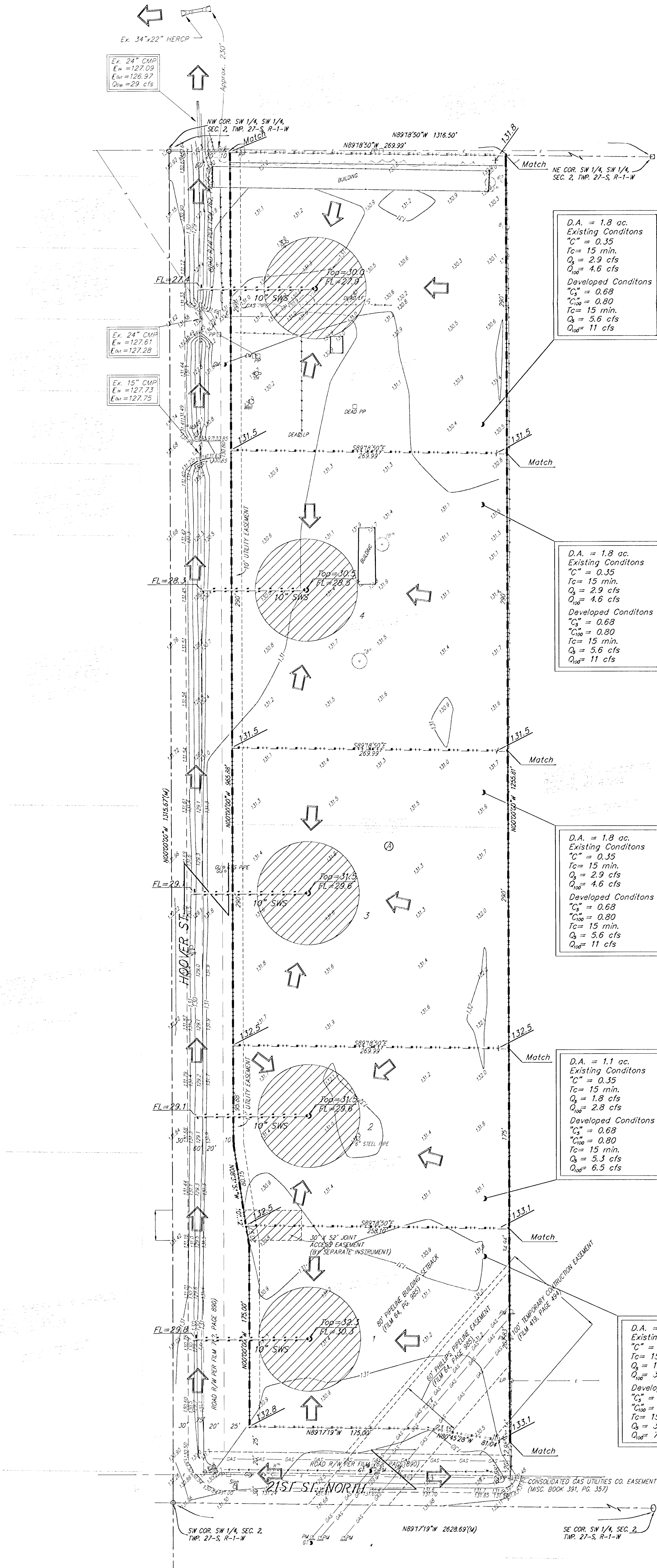


# DRAINAGE PLAN

## BURLESON ADDITION

### WICHITA, SEDGWICK COUNTY, KANSAS



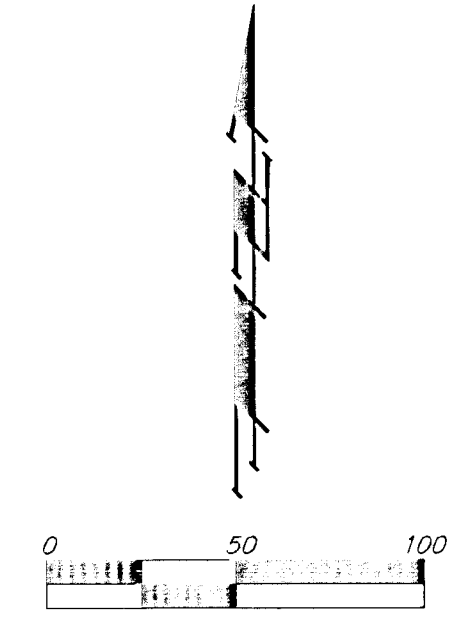
D.A. = 1.8 ac.  
Existing Conditions  
C<sub>s</sub> = 0.35  
T<sub>c</sub> = 15 min.  
Q<sub>s</sub> = 2.9 cfs  
Q<sub>100</sub> = 4.6 cfs  
Developed Conditions  
C<sub>s</sub> = 0.68  
C<sub>100</sub> = 0.80  
T<sub>c</sub> = 15 min.  
Q<sub>s</sub> = 3.6 cfs  
Q<sub>100</sub> = 11 cfs

D.A. = 1.8 ac.  
Existing Conditions  
C<sub>s</sub> = 0.35  
T<sub>c</sub> = 15 min.  
Q<sub>s</sub> = 2.9 cfs  
Q<sub>100</sub> = 4.6 cfs  
Developed Conditions  
C<sub>s</sub> = 0.68  
C<sub>100</sub> = 0.80  
T<sub>c</sub> = 15 min.  
Q<sub>s</sub> = 3.6 cfs  
Q<sub>100</sub> = 11 cfs

D.A. = 1.8 ac.  
Existing Conditions  
C<sub>s</sub> = 0.35  
T<sub>c</sub> = 15 min.  
Q<sub>s</sub> = 2.9 cfs  
Q<sub>100</sub> = 4.6 cfs  
Developed Conditions  
C<sub>s</sub> = 0.68  
C<sub>100</sub> = 0.80  
T<sub>c</sub> = 15 min.  
Q<sub>s</sub> = 3.6 cfs  
Q<sub>100</sub> = 11 cfs

D.A. = 1.1 ac.  
Existing Conditions  
C<sub>s</sub> = 0.35  
T<sub>c</sub> = 15 min.  
Q<sub>s</sub> = 1.8 cfs  
Q<sub>100</sub> = 2.8 cfs  
Developed Conditions  
C<sub>s</sub> = 0.68  
C<sub>100</sub> = 0.80  
T<sub>c</sub> = 15 min.  
Q<sub>s</sub> = 3.3 cfs  
Q<sub>100</sub> = 6.5 cfs

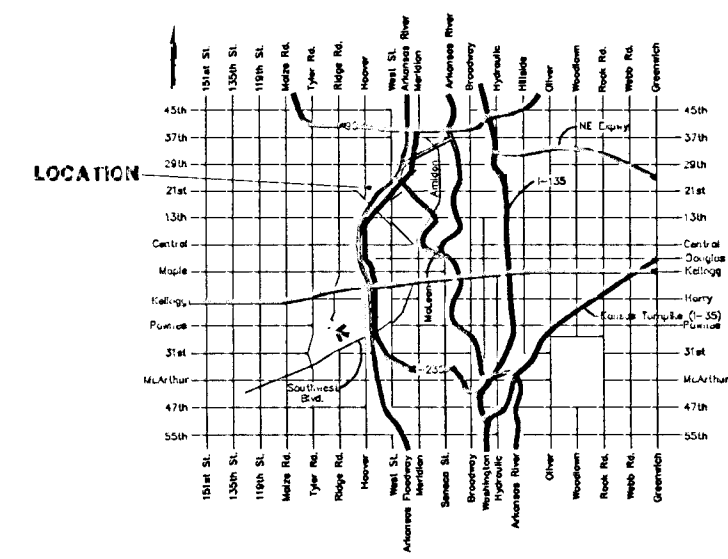
D.A. = 1.2 ac.  
Existing Conditions  
C<sub>s</sub> = 0.35  
T<sub>c</sub> = 15 min.  
Q<sub>s</sub> = 1.9 cfs  
Q<sub>100</sub> = 3.1 cfs  
Developed Conditions  
C<sub>s</sub> = 0.68  
C<sub>100</sub> = 0.80  
T<sub>c</sub> = 15 min.  
Q<sub>s</sub> = 3.7 cfs  
Q<sub>100</sub> = 7.1 cfs



**OWNER:**  
Nu-Line Co., Inc.  
P.O. Box 75537  
Wichita, KS 67275  
Ph. (316) 942-0990

**LEGAL DESCRIPTION:**  
The west ten acres of the SW 1/4 of the SW 1/4 of Sec. 2, Twp. 27-S, R-1-W of the 6th P.M., Sedgwick County, Kansas.

**BENCHMARK:**  
City Disc - 48.5' W. & 28' N. of C of 21st Street North & Hoover St.  
Elev. = 130.97 City Datum



- EM □ = Electric Meter
- OM □ = Gas Meter
- OP ○ = Guard Post (Balanced)
- OA — = Guy Anchor
- LP ○ = Light Pole
- MB □ = Mail Box
- PM — = Pipeline Marker
- OT □ = Gas Test
- PH □ = Power Pole
- Sign Δ = Sign
- T ○ = Tree
- Well O = Cased Well
- Hyd O = Yard Hydrant (Spigot)

- Notes:**
1. Hydrologic Group is Primarily Soil Type A. Developed Runoff Coefficients Used Are For Light Industrial Areas.
  2. Location and Size of Parking Lot Detention Shall Be Determined By Site Specific Plan.
  3. Detention Ponding Area =

11 September 2000