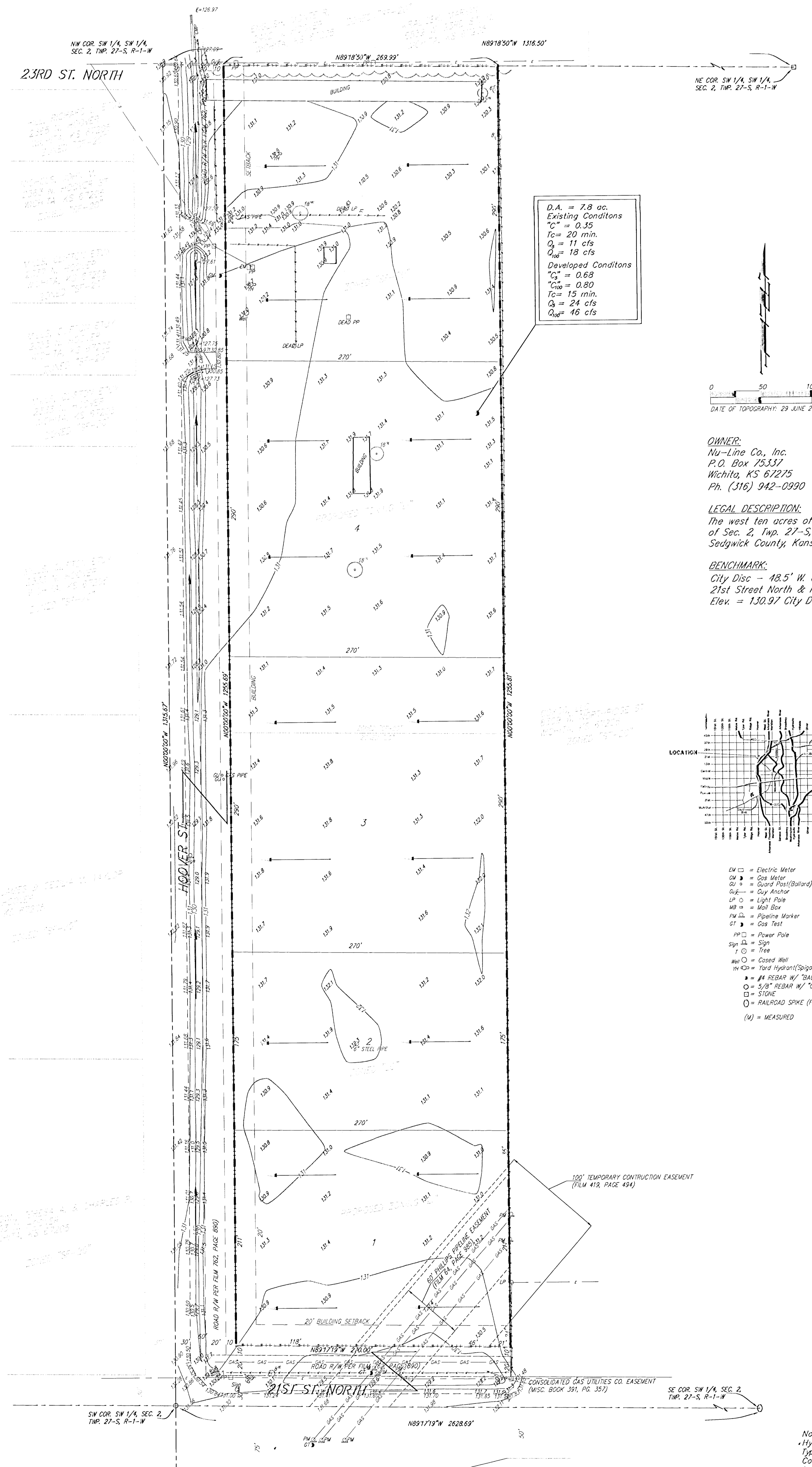
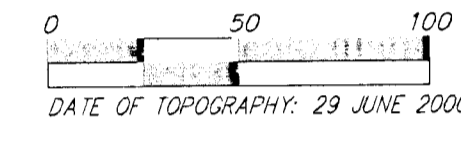


DRAINAGE CONCEPT BURLESON ADDITION WICHITA, SEDGWICK COUNTY, KANSAS



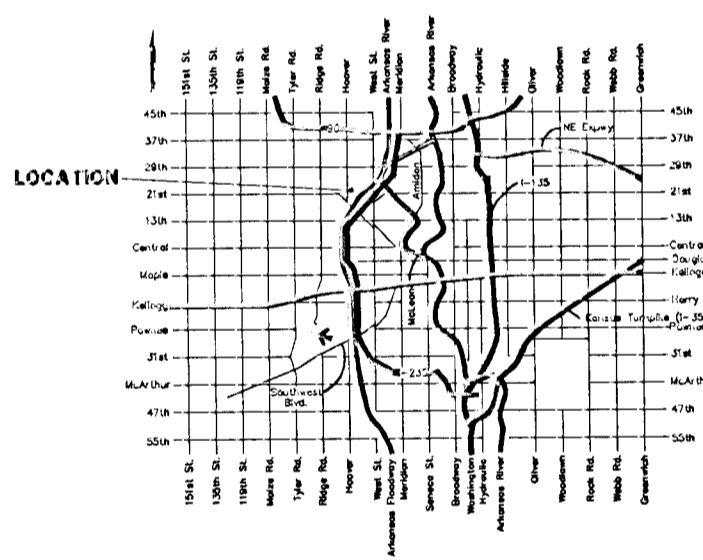
NE COR. SW 1/4, SW 1/4, SEC. 2, TWP. 27-S, R-1-W



OWNER:
 Nu-Line Co., Inc.
 P.O. Box 75357
 Wichita, KS 67275
 Ph. (316) 942-0900

LEGAL DESCRIPTION:
 The west ten acres of the SW 1/4 of the SW 1/4 of Sec. 2, Twp. 27-S, R-1-W of the 6th P.M., Sedgwick County, Kansas.

BENCHMARK:
 City Disc - 48.5' W. & 28' N. of C of 21st Street North & Hoover St.
 Elev. = 130.97 City Datum



- EM □ = Electric Meter
- GM □ = Gas Meter
- GP □ = Guard Post (Ballard)
- GA □ = Guy Anchor
- LP □ = Light Pole
- MB □ = Mail Box
- PM □ = Pipeline Marker
- GT □ = Gas Test
- PP □ = Power Pole
- SP □ = Sign
- T □ = Tree
- W □ = Closed Well
- HW □ = Hand Hydrant (Signal)
- = #4 REBAR W/ "BAUGHMAN" CAP (SET)
- = 5/8" REBAR W/ "CARBER" CAP (FOUND)
- = STONE
- = RAILROAD SPIKE (FOUND)
- (M) = MEASURED

Note:
 Hydrologic Group is Primarily Soil Type A. Developed Runoff Coefficients Used Are For Light Industrial Areas.

3 JULY 2000