

DRAINAGE PLAN

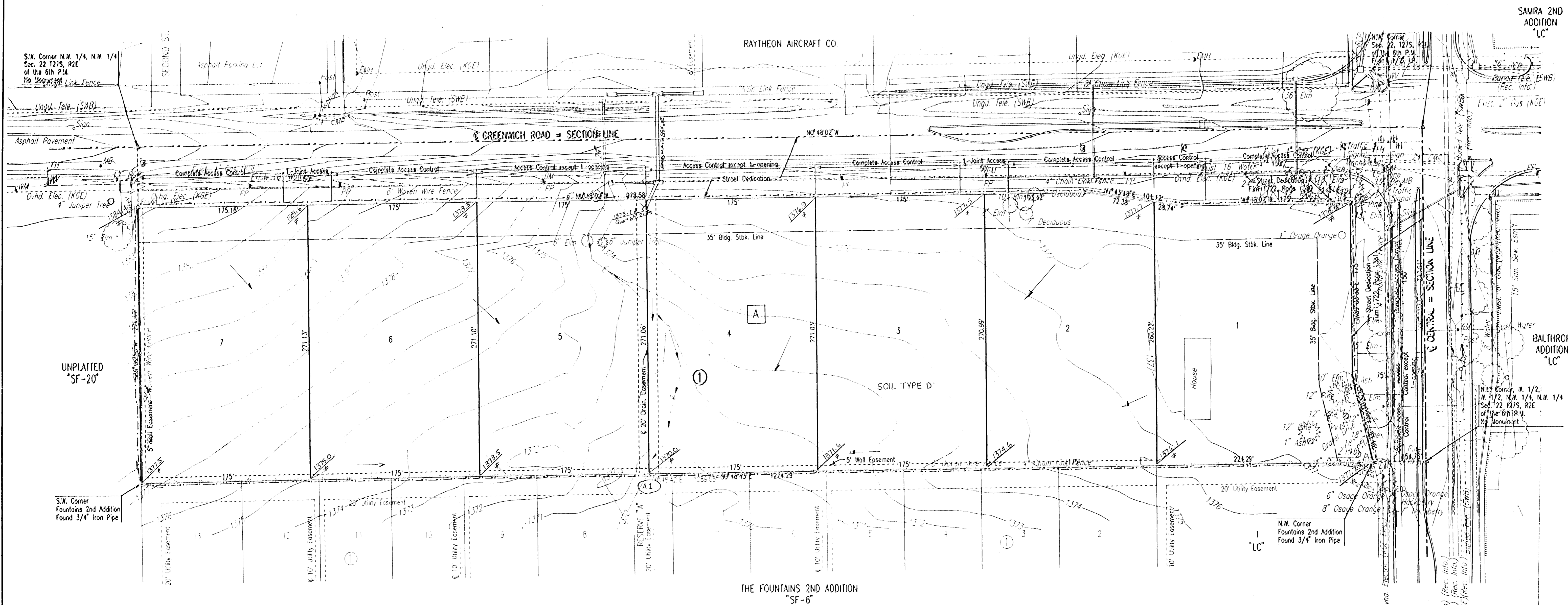
CANYON PROPERTIES ADDITION

TO WICHITA, SEDGWICK COUNTY, KANSAS

SCALE: 1"=50'

BM GG112 - STEP NAIL IN NORTHWEST FACE POWER POLE AT SOUTHEAST CORNER
CENTRAL AVENUE AND GREENWICH ROAD.
ELEV.=1378.40 M.S.L.

BM GG113 - STEP NAIL IN WEST FACE POWER POLE, 45° SOUTH AND 40° EAST
OF THE CENTERLINES OF CENTRAL AVENUE AND GREENWICH ROAD.
ELEV.=1379.52 M.S.L.



- LEGEND**
- BASIN BOUNDARY
 - STORM FLOW
 - A DRAINAGE BASIN IDENTIFIER
 - A1 Q₁₀₀ ALLOWABLE = 110.2 cfs
Q₁₀₀ THROUGH = 103.3 cfs
 - * MATCH EXISTING ELEVATIONS

BASIN A	
AREA	7.4 Ac.
C100	0.7
I100	7.36
Q100	38.1

Exist. 8" Flexible Waterline (Beets) (Rec. Info.)
 Exist. 4" Steel Waterline, abandoned (Beets) (Rec. Info.)
 Exist. 4" Gas (KGE) (Rec. Info.)