



Mickey

6/2/98

I proposed giving  
in on this a little  
to Dan Beyouth. He  
will take it back to  
Quick Trip to see  
if they can work with  
it.

F.Y.I.

Kern

6/4/98

Mickey

Beyouth worked us a  
better deal. See red  
marks. F.Y.I. Kern

Keep Barrier Curb  
Begin Mountable Curb  
dir. by gurd  
very bad

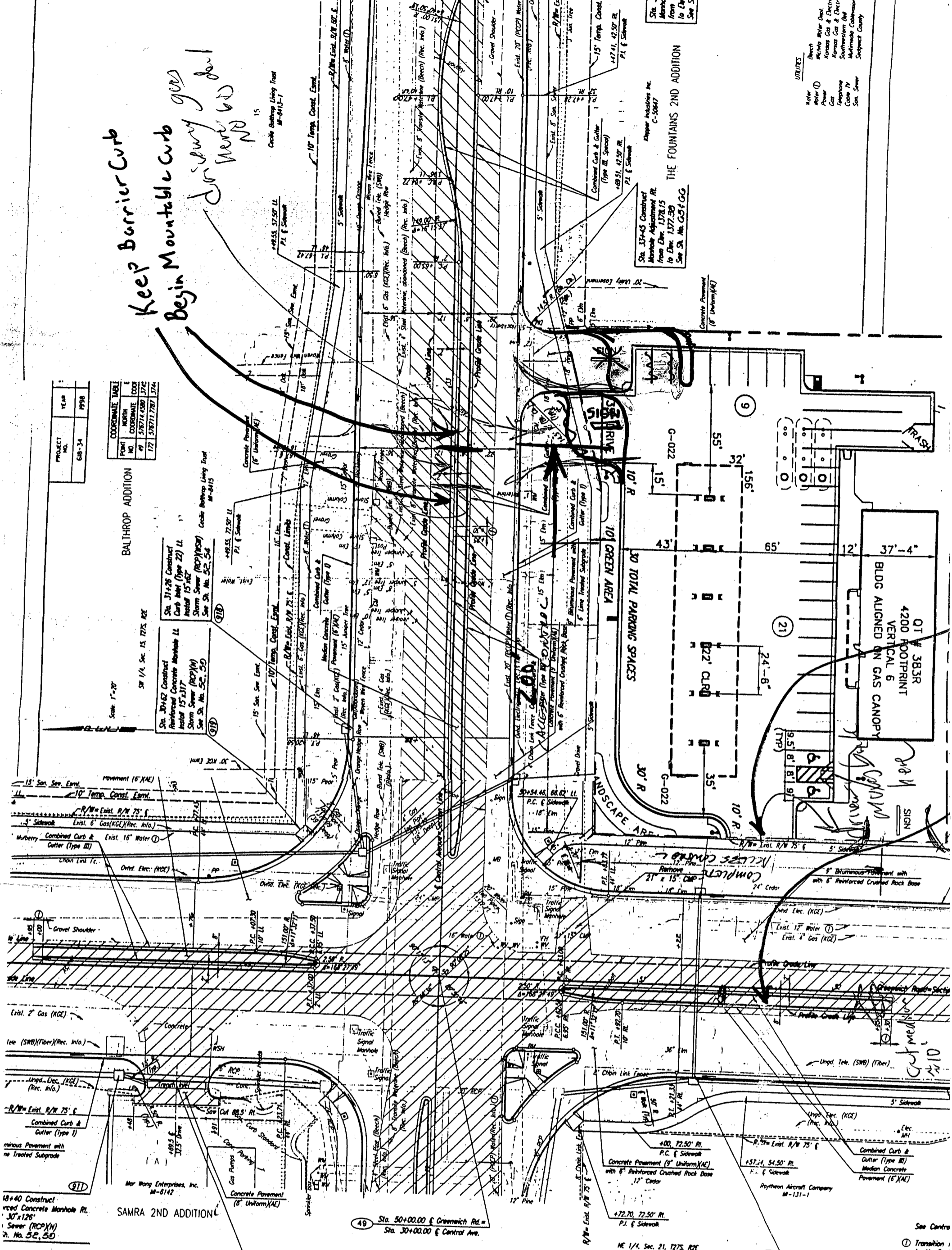
PROJECT NO.	YEAR
688-34	1998

COORDINATE TABLE	
POINT NO.	Easting
171	528771.770
172	528771.770

BALTHROP ADDITION

Sta. 31+42 Construct  
Reinforced Concrete Mountable LL  
Install 15"x18"  
Storm Sewer (RCP)(N)  
See Sh. No. 52, 54

Sta. 31+28 Construct  
Curb Inlet (Type 22) LL  
Install 15"x18"  
Storm Sewer (RCP)(N)  
See Sh. No. 52, 54



SE 1/4, Sec. 15, 1775, R2E

18+40 Construct  
Reinforced Concrete Manhole Rt.  
30"x12"  
Sewer (RCP)(N)  
Sh. No. 52, 50

Sta. 48+69.50 Construct  
Trench Inlet Rt.  
Install 15"x18"  
Storm Sewer (RCP)(N)  
See Sh. No. 52, 50

SW COR. SEC. 15, 1775, R2E (49)  
Sta. 50+00.00 GREENWICH ROAD =  
Sta. 30+00.00 CENTRAL AVENUE  
1. FOUND 1/2" IRON PIPE IN THIMBLE  
2. CHS 4" SOUTH TOP 18" CONC. LIGHT BASE NORTH SIDE QUADTRIP/EAST ENTRANCE  
3. 1/2" REBAR 28" WEST OF 12" CEDAR  
4. CHS 4" SW CORNER TRAFFIC SIGNAL POLE CONC. BASE  
5. CHS 4" TRAFFIC SIGNAL POLE BASE  
6. CHS 4" ON CONC. CURB QUADTRIP PARKING LOT AT P.I. NE BY MW AT SE COR. PARKING LOT  
7. 600 MM. IN SW FACE POWER POLE

Sta. 51+30 Construct  
Curb Inlet (Type 22) Rt.  
Install 18"x65"  
Storm Sewer (RCP)(N)  
See Sh. No. 52, 54

BM 10112: 400 STEP M.M. IN MW FACE POWER POLE AT SE CORNER CENTRAL AND GREENWICH ROAD.  
41' LT. STA. 50+40 ELEV. = 1378.40

BM 10117: CITY OF WICHITA DISC ON CONC. BASE OF TRAFFIC SIGNAL POLE AT SW CORNER CENTRAL & GREENWICH ROAD.  
36' RT. STA. 50+45 ELEV. = 1378.42

- UTILITIES
- Water: Beech
  - Water: Wichita Water Dept.
  - Power: Kansas Gas & Electric
  - Gas: Kansas Gas & Electric
  - Telephone: Southwestern Bell
  - Cable TV: Multimedia Cablevision
  - San Sewer: Sedgwick County

PROJECT NO. 618-34
Prepared by: JPS
Drawn by: JPS

- UTILITIES
- Water: Beech
  - Water: Wichita Water Dept.
  - Power: Kansas Gas & Electric
  - Gas: Kansas Gas & Electric
  - Telephone: Southwestern Bell
  - Cable TV: Multimedia Cablevision
  - San Sewer: Sedgwick County

Sta. 13+45 Construct  
Manhole Adjustment Rt.  
From Elev. 1378.15  
to Elev. 1377.30  
See Sh. No. 52, 54

Sta. 11+41, 42.97 Rt.  
P.I. & Sidewalk

Sta. 11+41, 42.97 Rt.  
P.I. & Sidewalk

See Centre  
Transition 1 to No. Curt (min.) to 1



