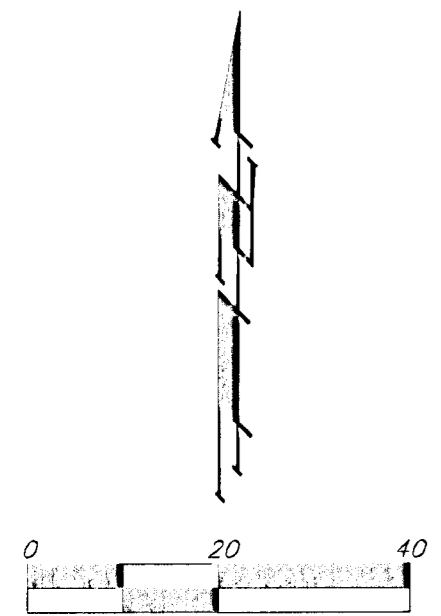
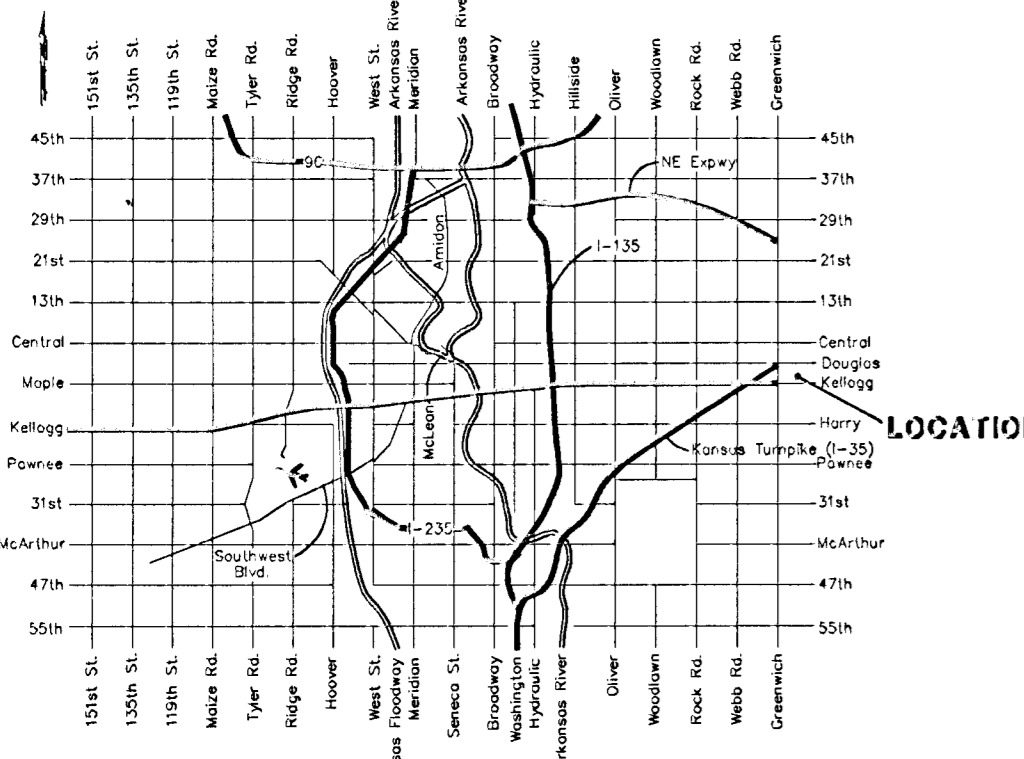


# DRAINAGE CONCEPT

## LARNARD SMITH ADDITION

### WICHITA, SEDGWICK COUNTY, KANSAS

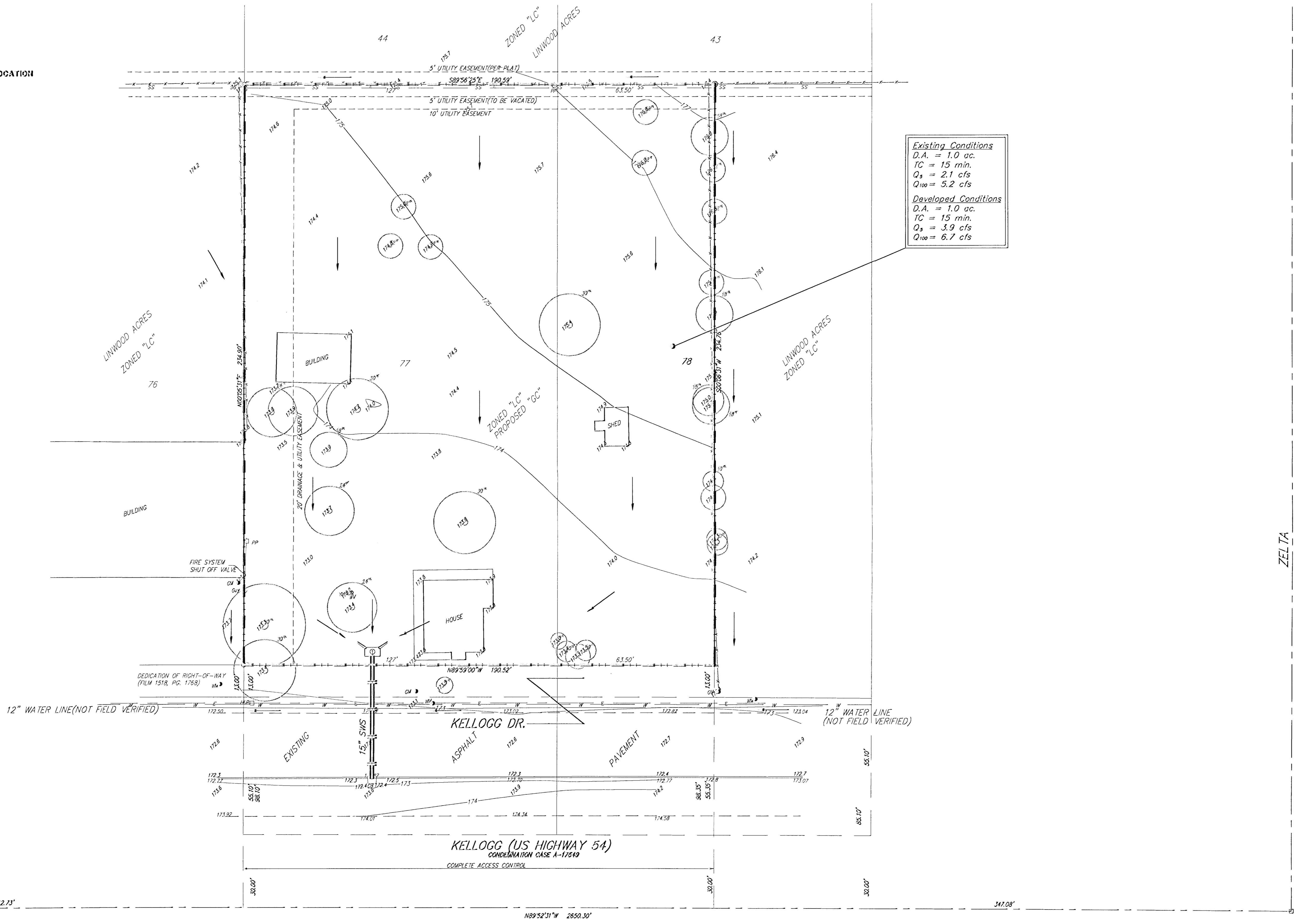


**OWNER:**  
Larnard E. Smith  
14401 Laguna, Dr.  
Wichita, KS 67230  
Ph: (316) 685-1244

**LEGAL DESCRIPTION:**  
A replat of Lot 77, together with the west half of Lot 78, Linwood Acres, Sedgwick County, Kansas, EXCEPT that part condemned for US highway 54 (A-17549).

**BENCHMARK:**  
" " cut back of curb north side of Kellogg Dr., south of southeast cor.  
Elev. = 172.77

- = #4 REBAR W/ "BAUGHMAN" CAP (SET)
- ⊙ = #4 REBAR W/ "SRB" CAP (FOUND)
- ⊗ = 3/4" IRON (FOUND)
- = 1/2" IRON (FOUND)
- = TRUMBULL (FOUND)
- CB = Catch Basin
- GM = Gas Meter
- HL = High Line Pole
- PP = Power Pole
- SP = Sign
- SWB = Southwestern Bell Pedestal
- T = Tree
- WM = Water Meter
- WV = Water Valve
- WH = Ward Hydrant (Spigot)



<b>Existing Conditions</b>	
D.A. = 1.0 ac.	
TC = 15 min.	
Q <sub>s</sub> = 2.1 cfs	
Q <sub>100</sub> = 5.2 cfs	
<b>Developed Conditions</b>	
D.A. = 1.0 ac.	
TC = 15 min.	
Q <sub>s</sub> = 3.9 cfs	
Q <sub>100</sub> = 6.7 cfs	

ZELTA

22 MAY 2000