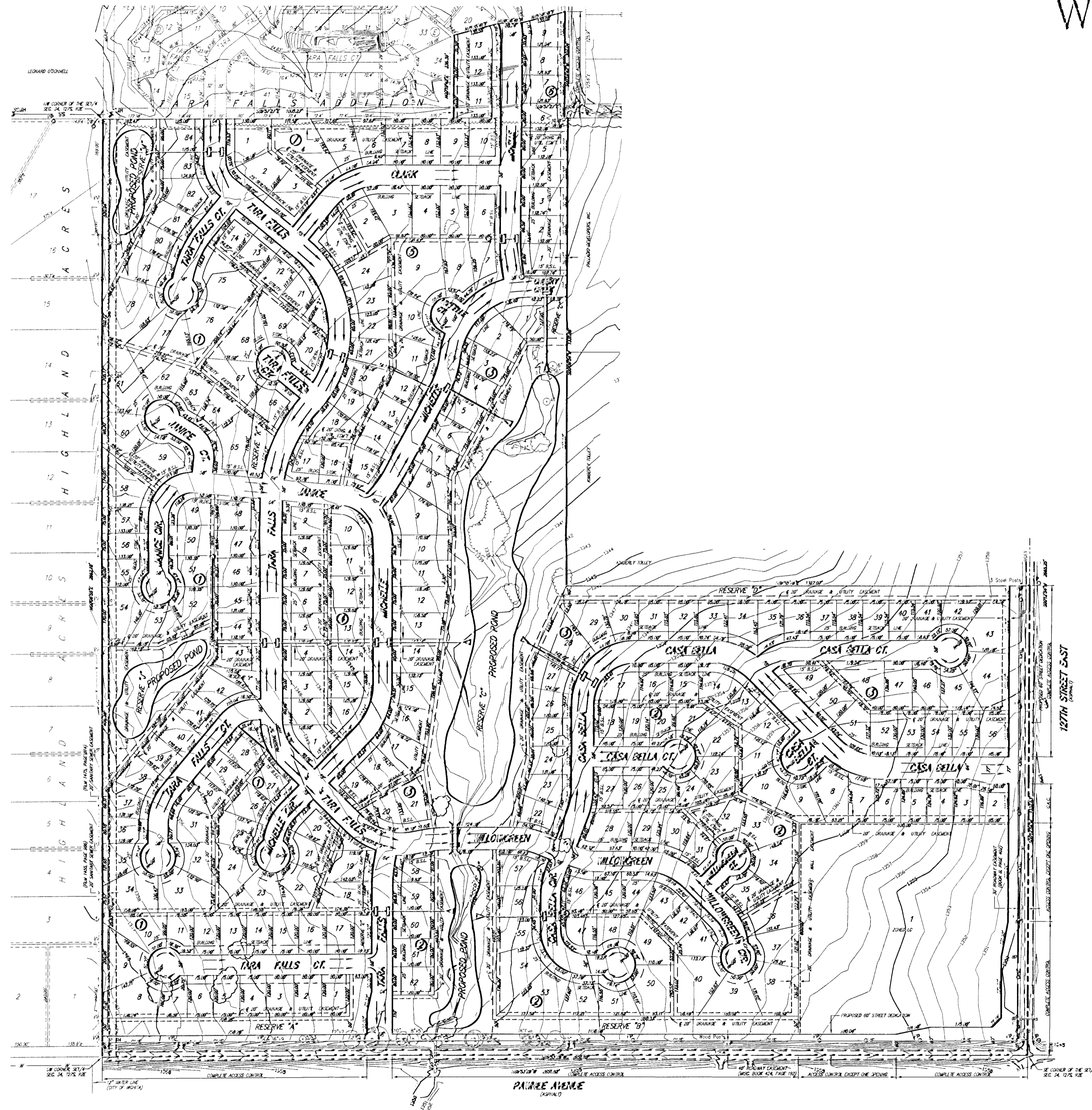


Drainage Concept CASA BELLA Wichita, Sedgwick County, Kansas



LEGAL DESCRIPTION:
Lots 14, 15, 16, 17, 18 and 19, Block E, Tara Falls Addition, Sedgwick County, Kansas together with the SE1/4 of Section 34, T27S, R2E of the 6th P.M. Sedgwick County, Kansas EXCEPT the NE1/4 of said SE1/4.

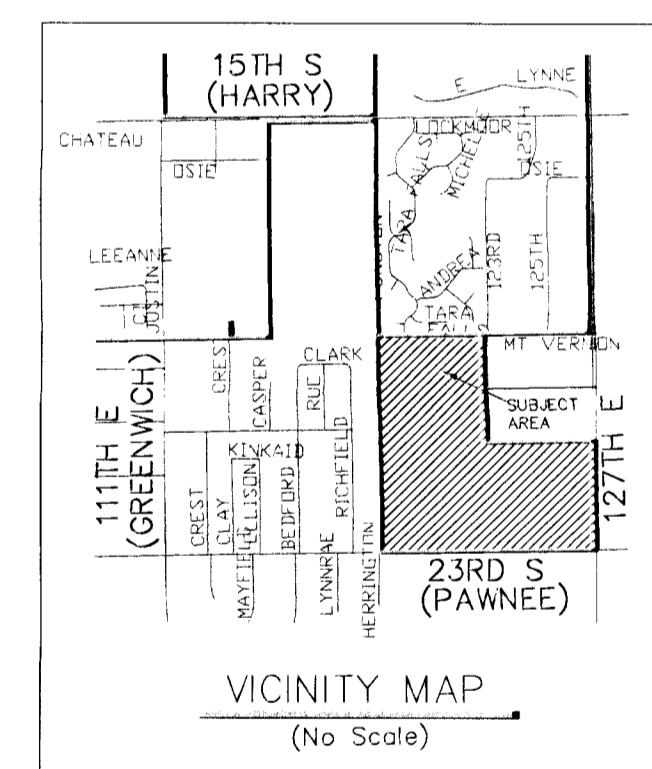


1" = 200'

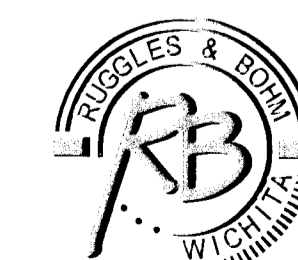
BENCH MARK: SRB BRASS DISC 55.45' E.
& 5.13' S. OF THE N.W. COR., SW1/4, SEC. 35,
T27S, R2E
ELEV. = 1348.35 (NGVD) = 160.85 (CITY DATUM)

LEGEND

- SS SANITARY SEWER (CITY OF WICHITA)
- OHE OVERHEAD ELECTRIC (WESTAR)
- W WATER MAIN (CITY OF WICHITA)
- CMP CORRUGATED METAL PIPE
- BPec TELEPHONE PEDESTAL
- SIGN
- PP POWER POLE (WESTAR)
- CO CLEAN OUT
- ▷ GUY ANCHOR
- SS M.H. SANITARY SEWER MANHOLE (CITY OF WICHITA)
- DECIDUOUS TREE (CALIPER INDICATED)
- ⊙ CONIFER TREE (CALIPER INDICATED)



DWG FILE: SURVEY BASE
PROJECT NO: 2521P
MARCH 23, 2005



Ruggles & Bohm, P.A.
Engineering, Surveying, Land Planning
924 North Main (316) 264-8008
Wichita, Kansas 67203 (316) 264-4621 fax
www.rbkansas.com E-mail: info@rbkansas.com