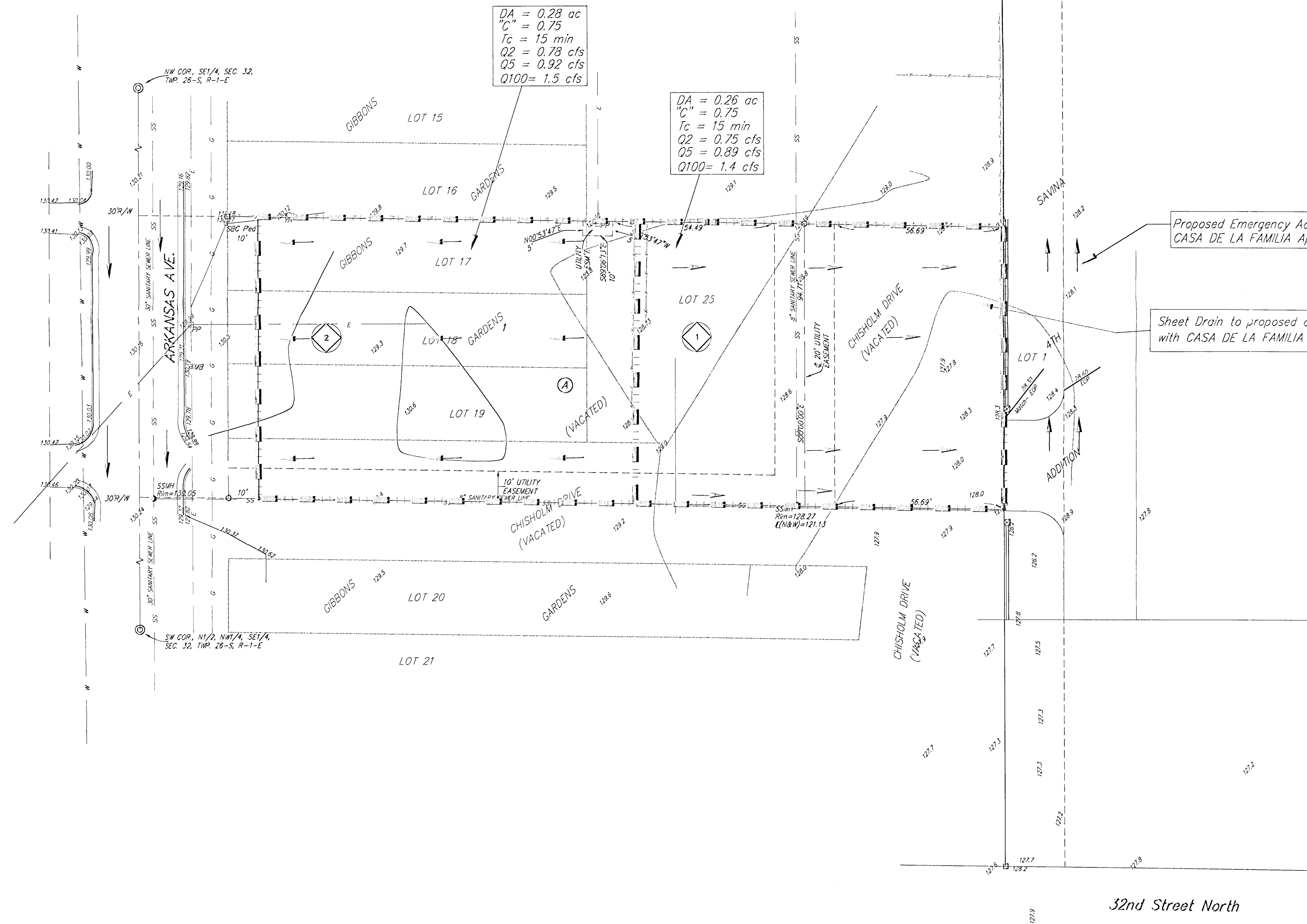


# DRAINAGE PLAN CASA DE LA FAMILIA ADDITION WICHITA, SEDGWICK COUNTY, KANSAS



0 20 40

CONTOUR INTERVAL = 1 FT.  
DATE OF TOPOGRAPHY = 25 JULY 2003

● = #4 REBAR W/ "BAUGHMAN" CAP (SET)  
 ○ = 1/2" IRON (FOUND)  
 □ = 3/4" IRON (FOUND)  
 ⊗ = #6 REBAR (FOUND)  
 ⊙ = 1/2" IRON IN THIMBLE (FOUND)

BENCHMARK:  
 ARKANSAS & 35TH ST. N. -  
 CITY OF WICHITA BENCHMARK DISC  
 42" W. OF E.  
 24" N. OF E.  
 ELEV. = 130.21 CITY DATUM

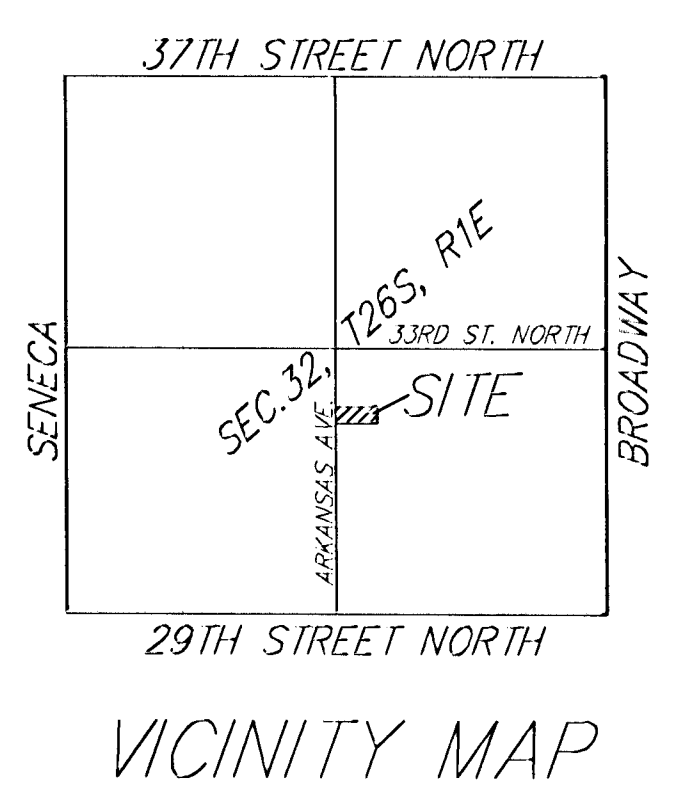
□ SBC Ped = SBC Pedestal  
 ⊙ YH = Yard Hydrant (Spigot)

**DRAINAGE LEGEND:**

= Basin I.D.  
 = Property Flow  
 = Basin Delimitation

Proposed Emergency Access Road with CASA DE LA FAMILIA Apartment Site Plan

Sheet Drain to proposed off-site curb inlet associated with CASA DE LA FAMILIA Apartment Site Plan



REVISED NOVEMBER 14, 2003  
OCTOBER 27, 2003