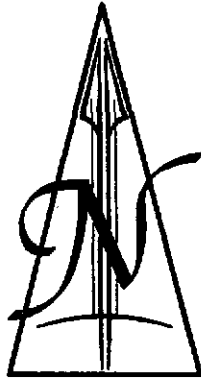
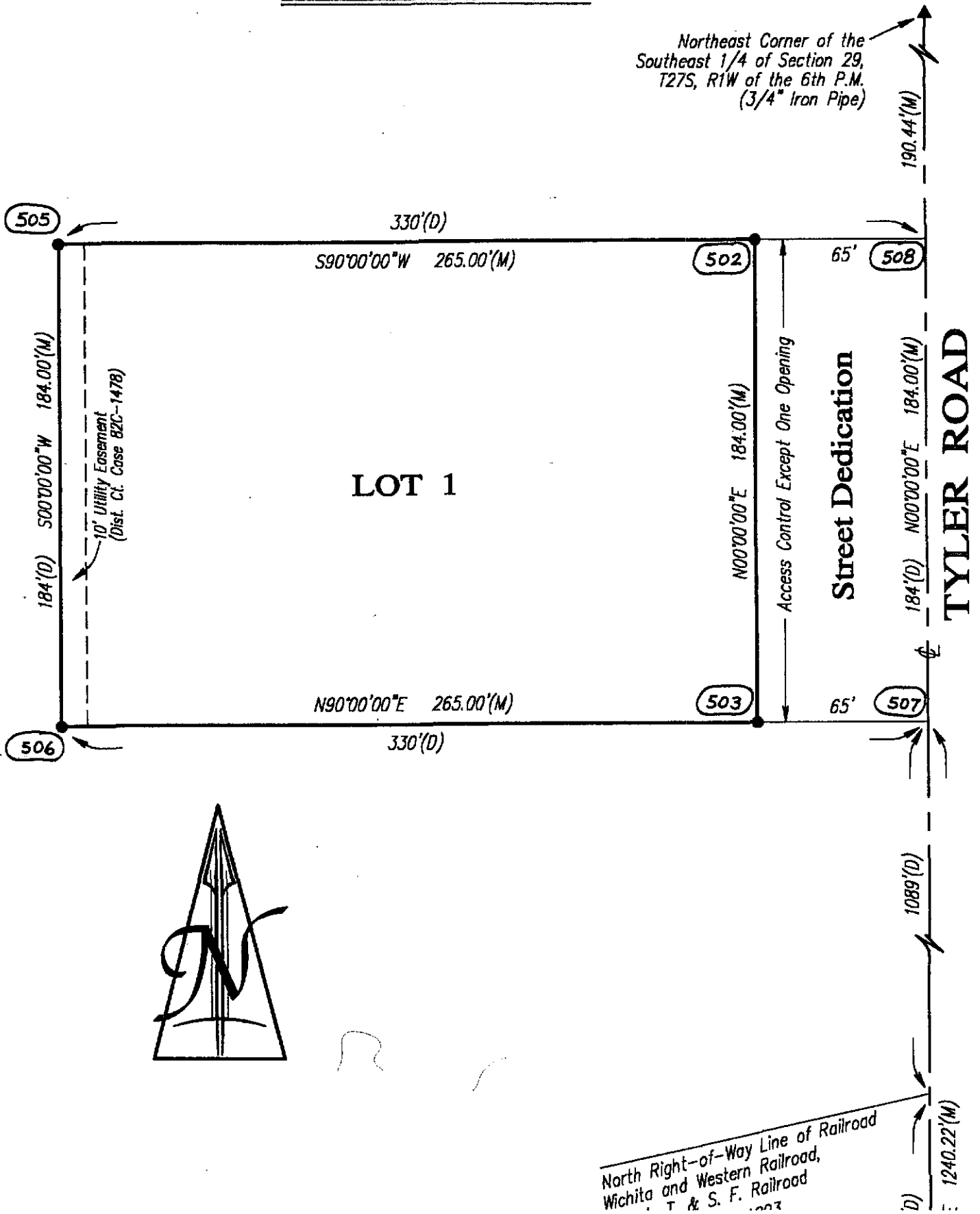


CLOSURE COMPUTATIONS FOR

"GEORGE HOLLAND ADDITION"

Northeast Corner of the  
Southeast 1/4 of Section 29,  
T27S, R1W of the 6th P.M.  
(3/4" Iron Pipe)



George Holland Closure Computations

Job ID : GH2  
Job name : George Holland Closure Computations  
Description :  
Reference :  
Projection : None  
Date printed: 13/08/02 10:08am

Initial parcel *PARENT TRACT*  
-----

Point	Bearing	Distance
507		
506	S90°00'00"W	330.000
505	N0°00'00"W	184.000
508	N90°00'00"E	330.000
507	S0°00'00"E	184.000

Area: 1.3939 acres  
Lot misclose: no misclose

Initial parcel *LOT 1*  
-----

Point	Bearing	Distance
503		
506	S90°00'00"W	265.000
505	N0°00'00"W	184.000
502	N90°00'00"E	265.000
503	S0°00'00"E	184.000

Area: 1.1194 acres  
Lot misclose: no misclose