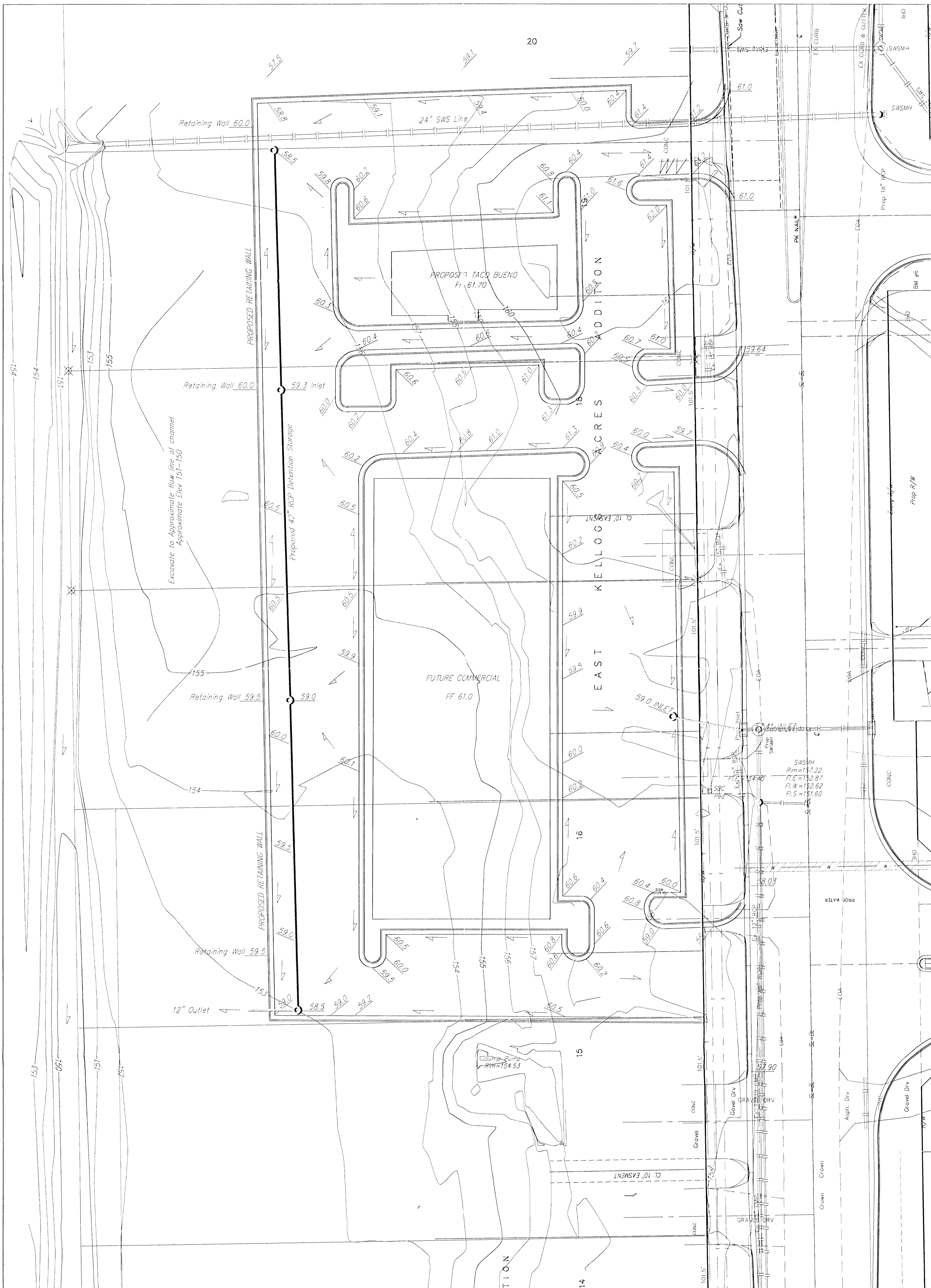


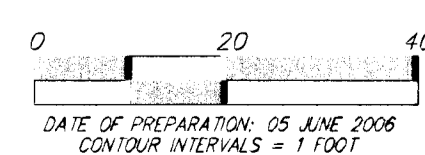
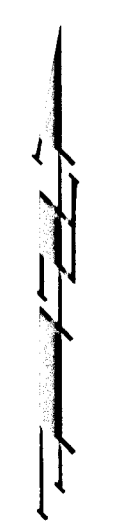
DRAINAGE & GRADING PLAN EAST KELLOGG ACRES ADDITION WICHITA, SEDGWICK COUNTY, KANSAS

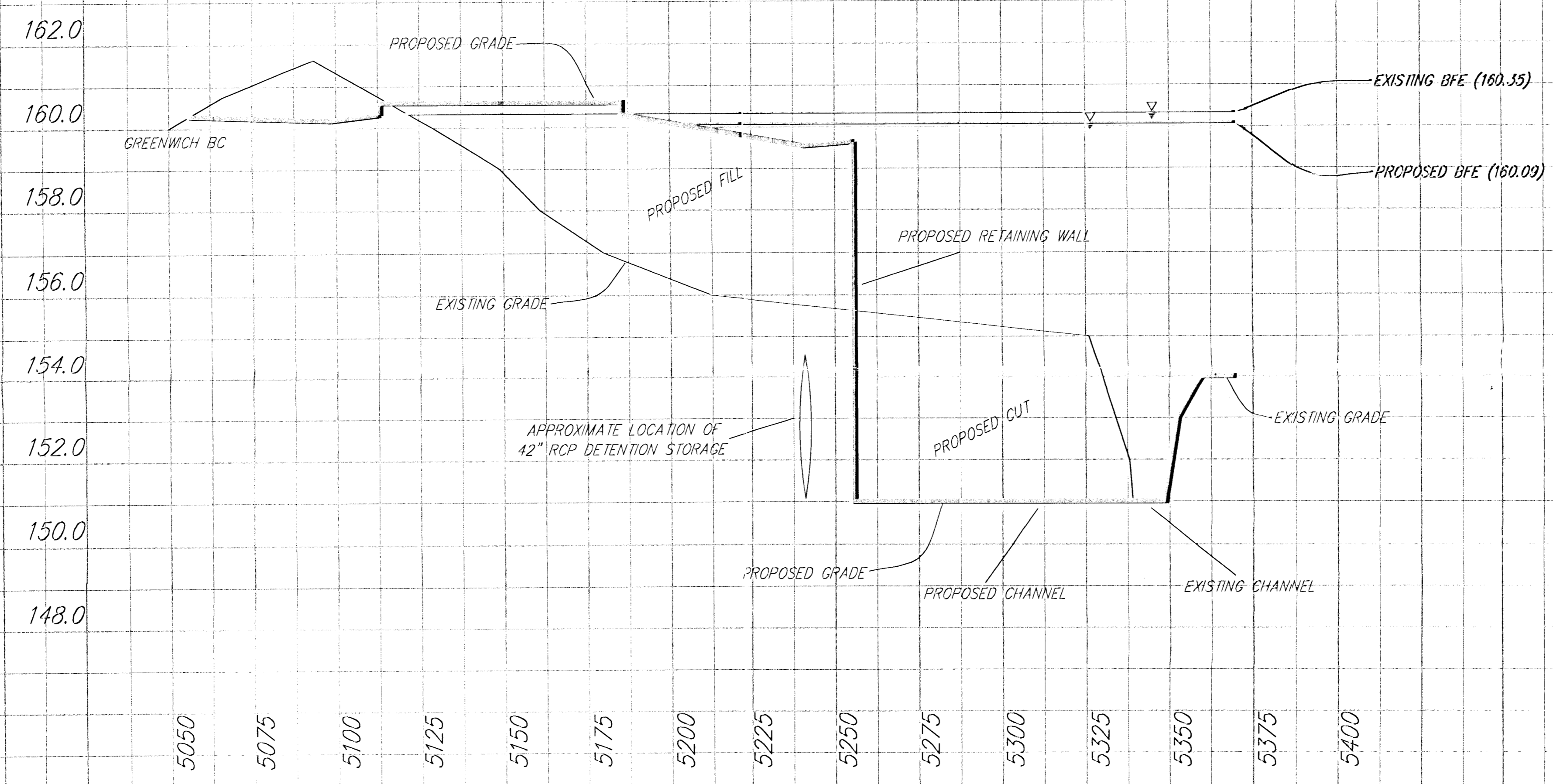
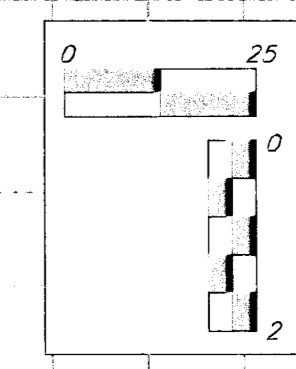


NOTE: No FEMA Floodplain or Floodway Boundaries are mapped on this property. The Base Flood Elevation used (159.8) is per PEC 'Spring Branch Master Drainage Plan', December 2004.

Existing channel to be widened and hydraulically improved upon construction. i.e. Removal of trees and/or brush will be done upon construction.

NOTE: Grades are approximate and represent flow lines of curb and pavement.





Cross Section over Taco Beuno Building Pad