

# STORM WATER SEWER to serve EAST KELLOGG ACRES CITY OF WICHITA, KANSAS

James L. Armour, P.E. City Engineer

Project Number

1888 PPS

O.C.A. Number

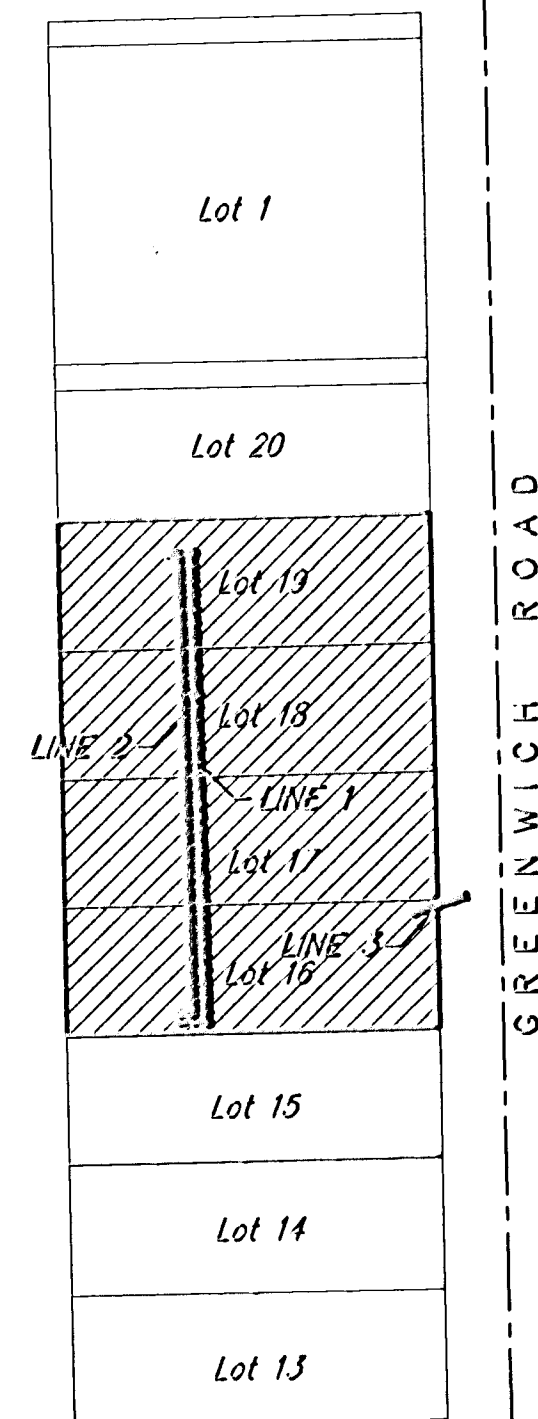
807381

## BENCHMARKS

BM #1: "□" chiseled on Top of West Curb between Lot 19 & 20 on Greenwich Rd.  
Elev. = 160.72 (City Datum)

BM #2: "□" chiseled on Top of West Signal Pole Base in front of Lot 16 on Greenwich Rd.  
Elev. = 158.51 (City Datum)

KELLOGG AVE ~ U.S. 54 HWY



GREENWICH ROAD

Scale: 1" = 150'

## GENERAL NOTES:

- Contractor will be required to provide notice to utility companies a minimum of forty-eight (48) hours prior to any excavation, as follows:

Kansas One-Call                      687-2470

The Contractor must notify the following in case of an emergency:

Cox Communications	262-4270
Kansas Gas Service	1-888-432-4950
Westar Energy	383-8650
Aquila Energy	1-800-303-0357
SBC	268-2245
City of Wichita Water Dept.	268-4563
City of Wichita Sewer Maint.	268-4024
City of Wichita Storm Sewer Maint.	268-4090
City of Wichita Traffic Maint.	268-4034
Conoco Phillips Pipeline	1-877-267-2290
Southern Star Pipeline	529-6600
Kinder Morgan Pipeline	1-888-844-5658

- Utility service lines, poles, valve boxes, meters, and etcetera are to be adjusted as necessary by others prior to construction unless the plans specifically call for their adjustment by the Contractor or unless the plans specifically identify a utility to be adjusted by its owner during construction. Existing utilities and their location, as shown on the plans, represent the best information obtainable for design. The Contractor will be required to work around existing utilities within the right-of-way which do not conflict with proposed construction.
- Rubble from the removal of miscellaneous structures and excess excavation which is to be wasted shall be disposed of on sites to be provided by the Contractor. These sites shall be approved by the Engineer as to suitability, appearance and site location. Locations, in the opinion of the Engineer, that will leave an unsightly appearance will not be approved. All disposal sites must be approved by the Kansas Department of Health and Environment. Material either stockpiled or disposed of in a flood plain would require a Kansas State Board of Agriculture permit. Any material dumped in waters of the United States or wetlands is subject to U.S. Corps. of Engineers permitting regulations. Any material buried or stockpiled beyond approved construction limits would require additional archaeological investigations unless buried in a previously approved borrow location.
- Trees and shrubs in public right-of-way which are in direct conflict with proposed new construction shall be removed by the Contractor with the Engineer's approval. Trees and shrubs which are not in direct conflict with proposed new construction shall be saved and protected from damage.

## SHEET INDEX

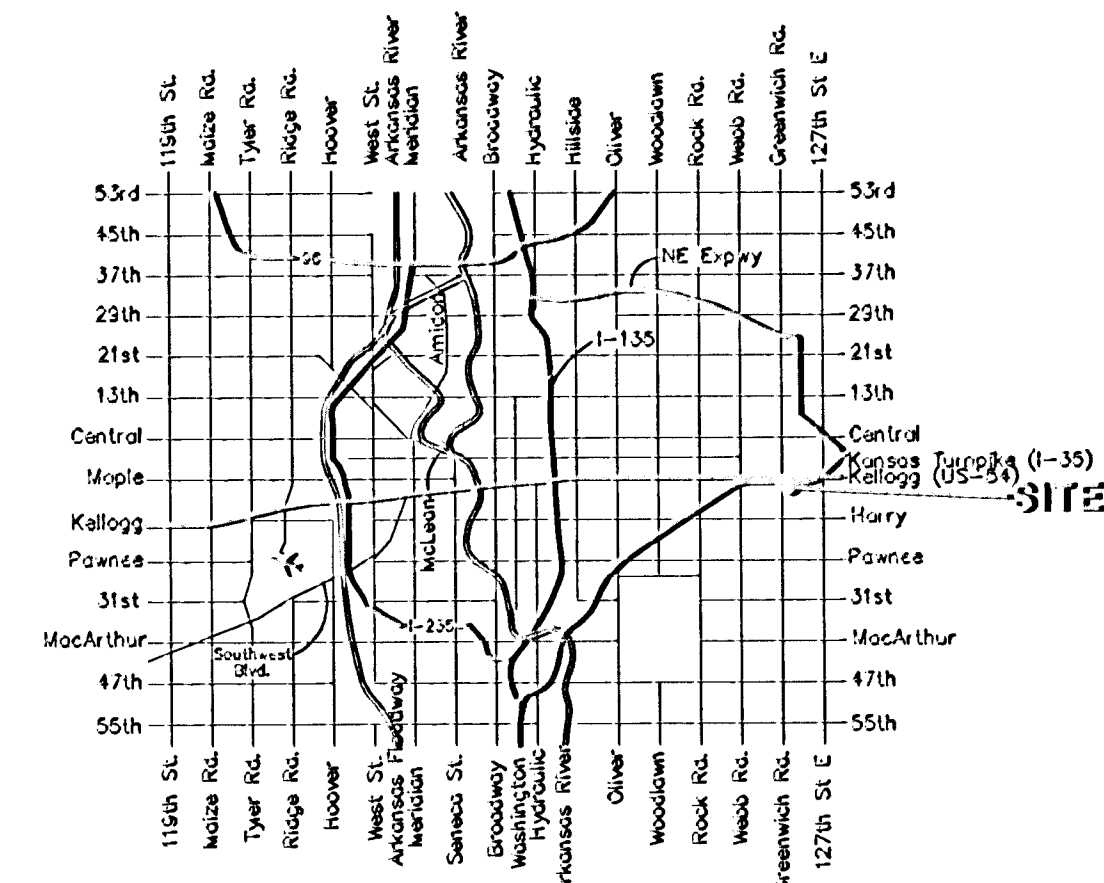
Title Sheet	1
SWS Line 1	2
SWS Line 2	3
SWS Line 3	4
Drop Inlet Detail	5

APPROVED AS NOTED  
BY CITY ENGINEER OF WICHITA

Storm Water Sewer

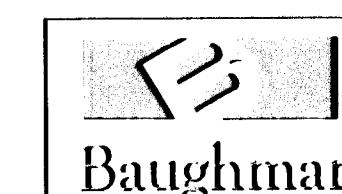
### NOTE TO CONTRACTORS

Installation, inspection, and testing for this project is to be provided by a Licensed Consulting Engineering Firm under contract with the Owner/Developer. Said inspection to be in accordance with the City of Wichita standard construction engineering practices and certified by a Licensed Professional Engineer. No work shall be performed in dedicated easements or public right-of-way by the Contractor without such inspection nor shall any work be commenced without written authorization by the City Engineer. All Construction and Materials shall comply with the City of Wichita Specifications and Standards (on file and available in the City Engineer's Office).



Vicinity Map

Benefit District

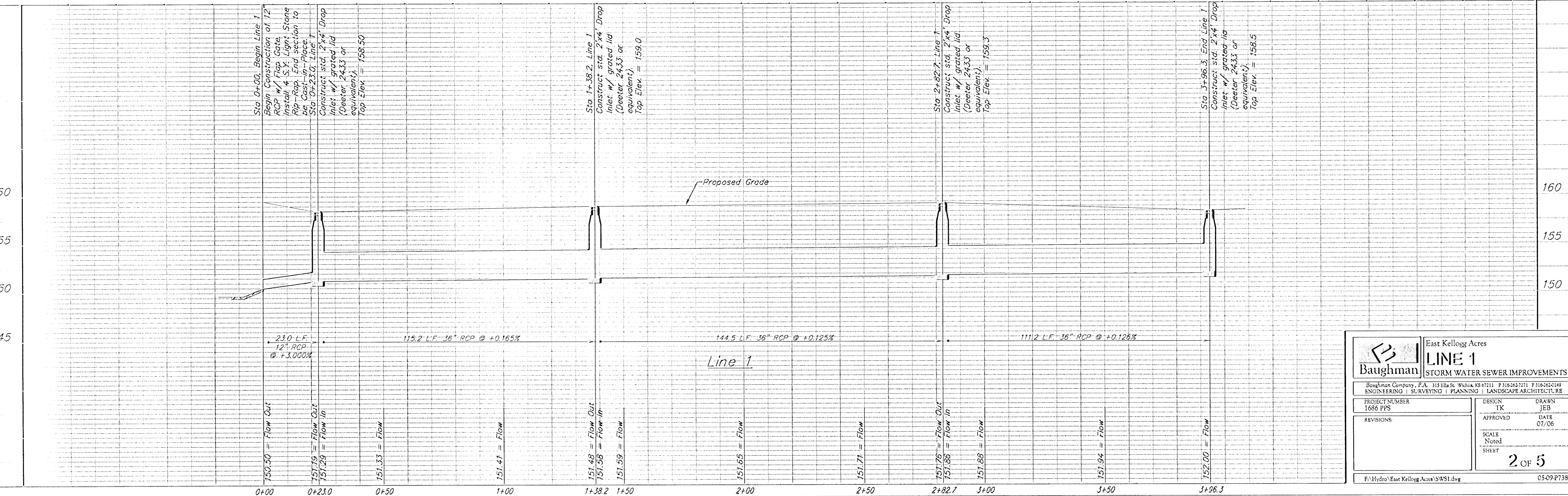
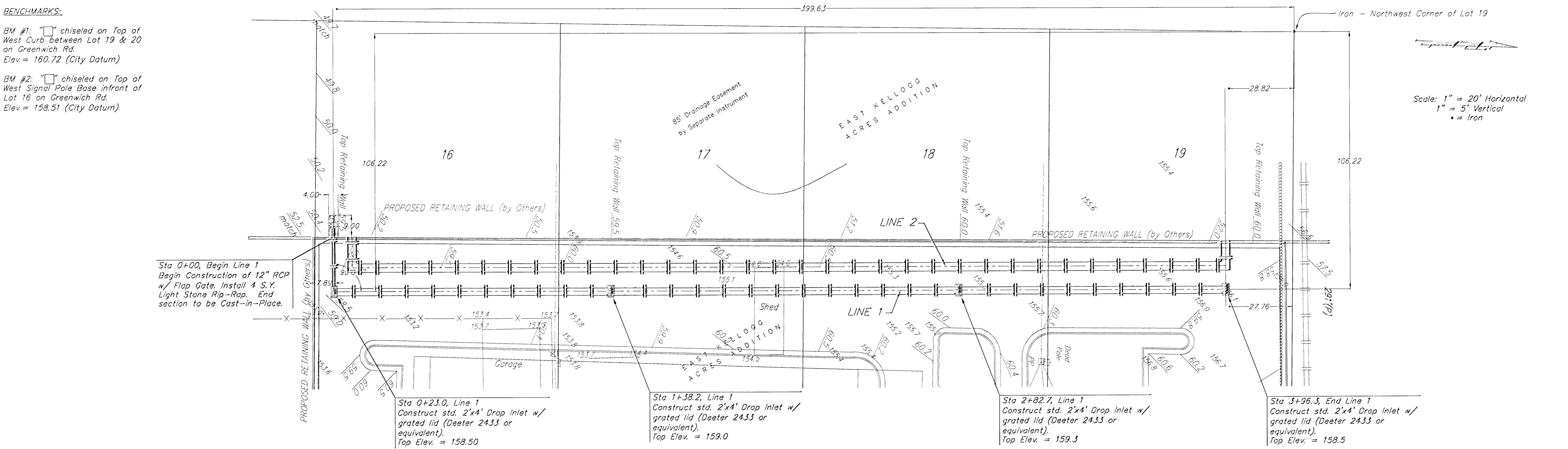


Baughman Company, P.A. 315 Ella St. Wichita, KS 67211 P 316-262-7271 F 316-262-0144  
ENGINEERING | SURVEYING | PLANNING | LANDSCAPE ARCHITECTURE

**BENCHMARKS:**

BM #1: chiseled on Top of West Curb between Lot 19 & 20 on Greenwich Rd.  
Elev. = 160.72 (City Datum)

BM #2: chiseled on Top of West Signal Pole Base in front of Lot 16 on Greenwich Rd.  
Elev. = 158.51 (City Datum)

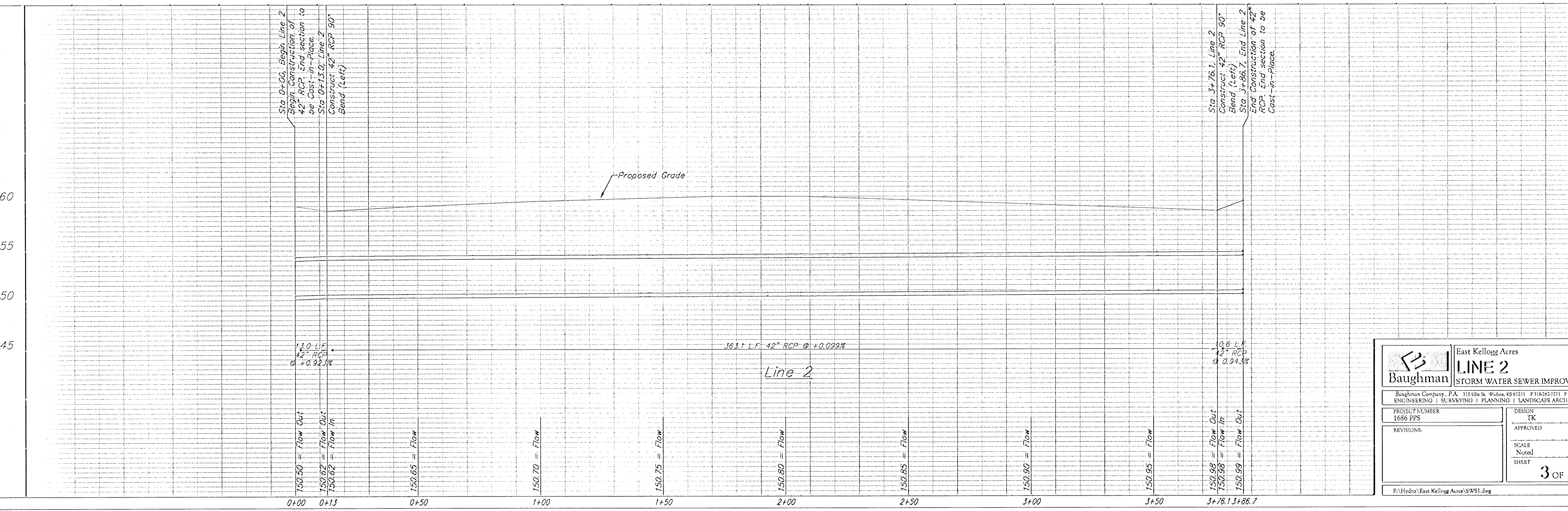
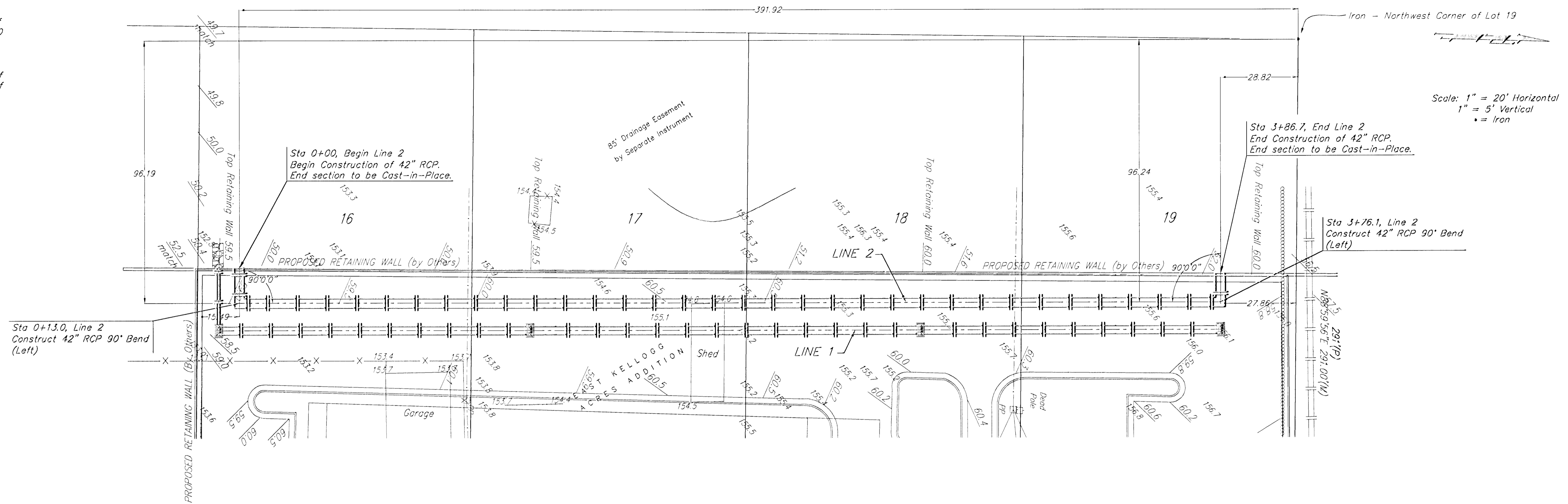


		East Kellogg Acres	
		<b>LINE 1</b>	
STORM WATER SEWER IMPROVEMENTS			
Baughman Company, P.A. 315 Ellis St. Wichita, KS 67211 P: 316.262.7271 F: 316.262.0149			
ENGINEERING   SURVEYING   PLANNING   LANDSCAPE ARCHITECTURE			
PROJECT NUMBER 1686 PPS	DESIGN TK	DRAWN JEB	DATE 07/06
REVISIONS:	APPROVED	DATE	
	SCALE AS SHOWN	SHEET	
		<b>2 OF 5</b>	
F:\Hydro\East Kellogg Acres\SWSL.dwg			05/09/P738

**BENCHMARKS:**

BM #1: "I" chiseled on Top of West Curb between Lot 19 & 20 on Greenwich Rd.  
Elev. = 160.72 (City Datum)

BM #2: "I" chiseled on Top of West Signal Pole Base in front of Lot 16 on Greenwich Rd.  
Elev. = 158.51 (City Datum)

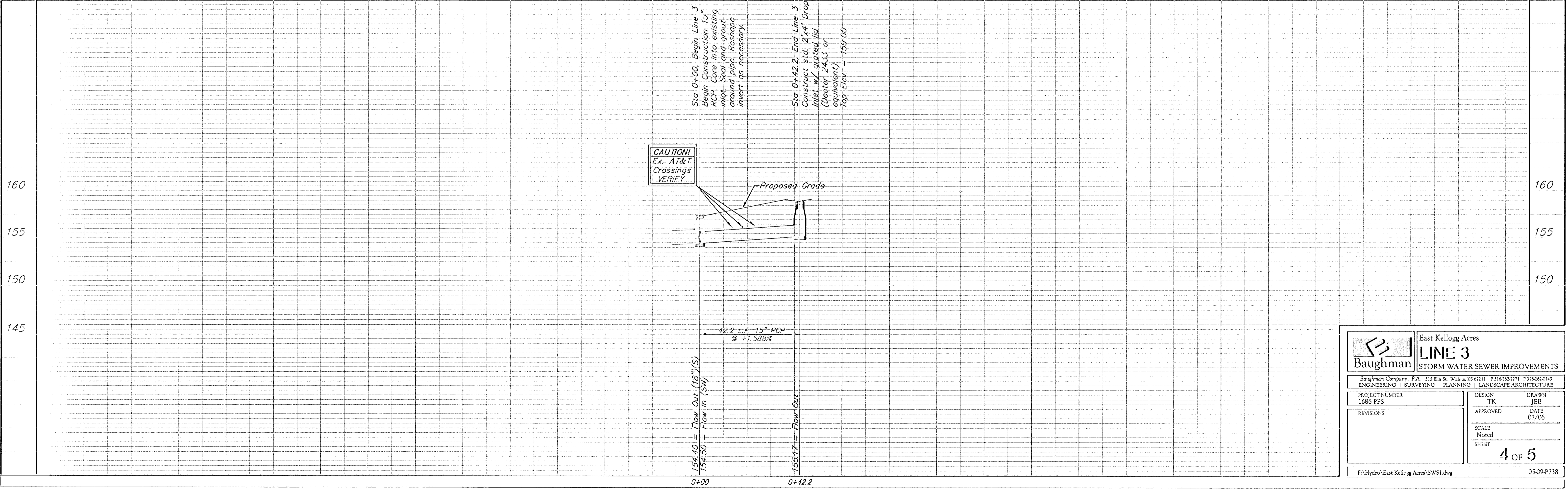
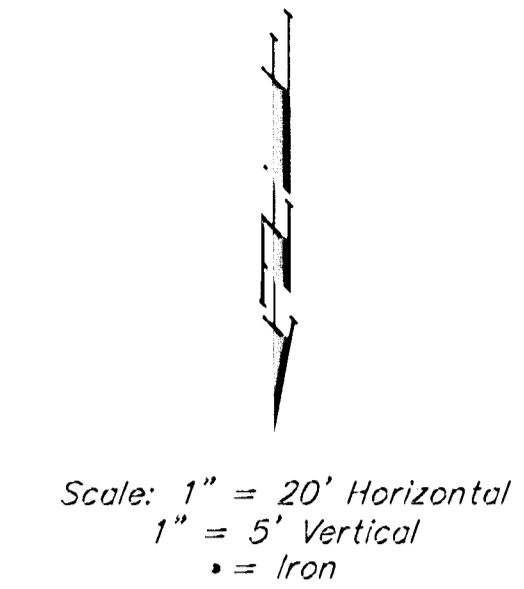
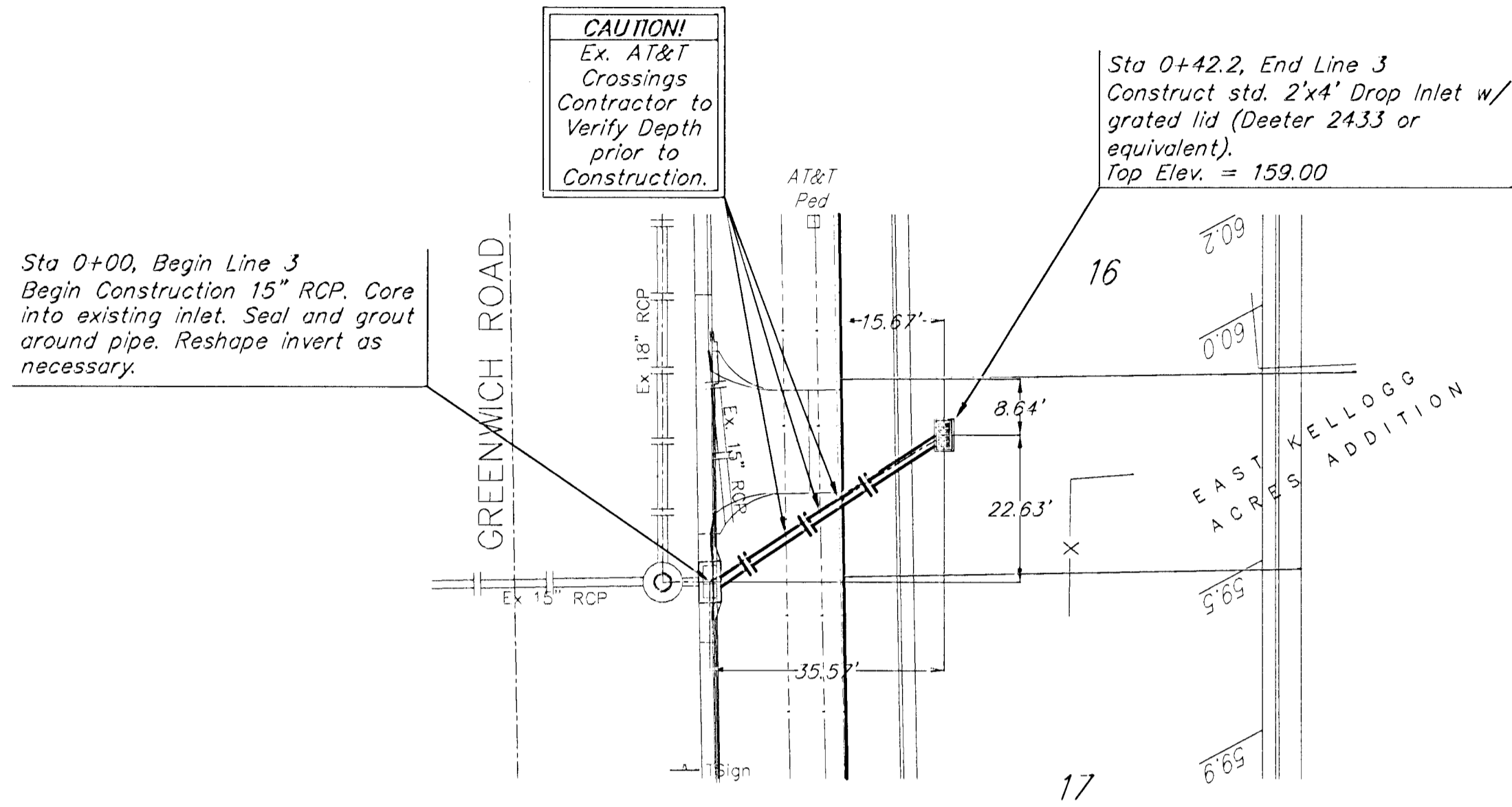


	East Kellogg Acres	
	<b>LINE 2</b>	
STORM WATER SEWER IMPROVEMENTS		
<small>Baughman Company, P.A. 115 Mills St., Woburn, MA 01897 P 781-521-7171 F 781-521-7149 ENGINEERING   SURVEYING   PLANNING   LANDSCAPE ARCHITECTURE</small>		
PROJECT NUMBER 1686 FPS	DESIGN TK	DRAWN JEB
REVISIONS:	APPROVED	DATE 07/06
	SCALE Noted	SHEET 3 OF 5
<small>F:\Hydro\East Kellogg Acres\SW1.dwg</small>		<small>05-09-0738</small>

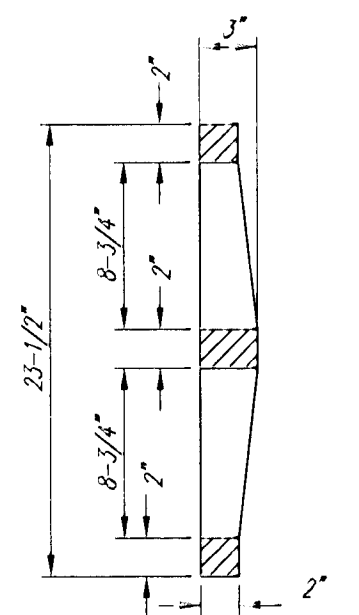
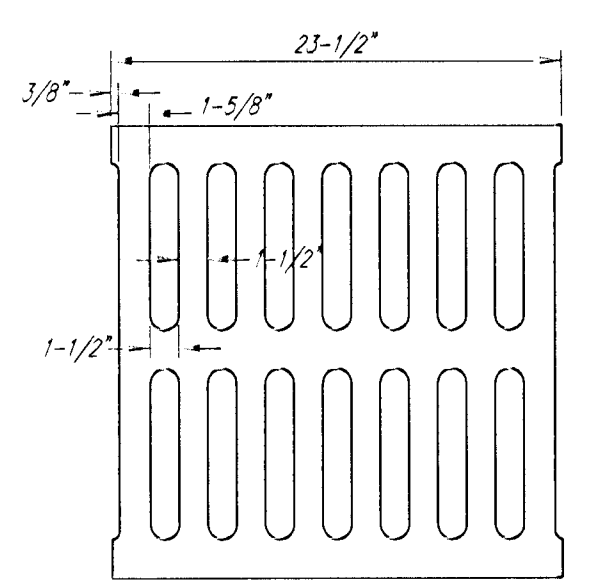
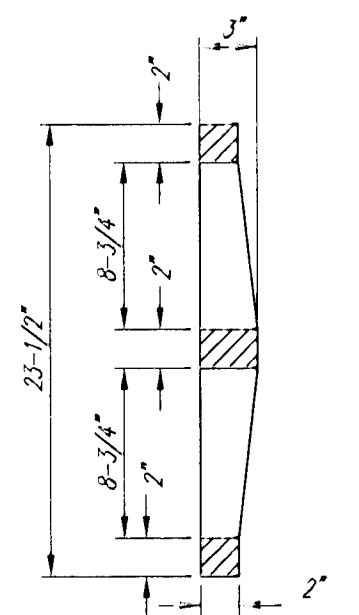
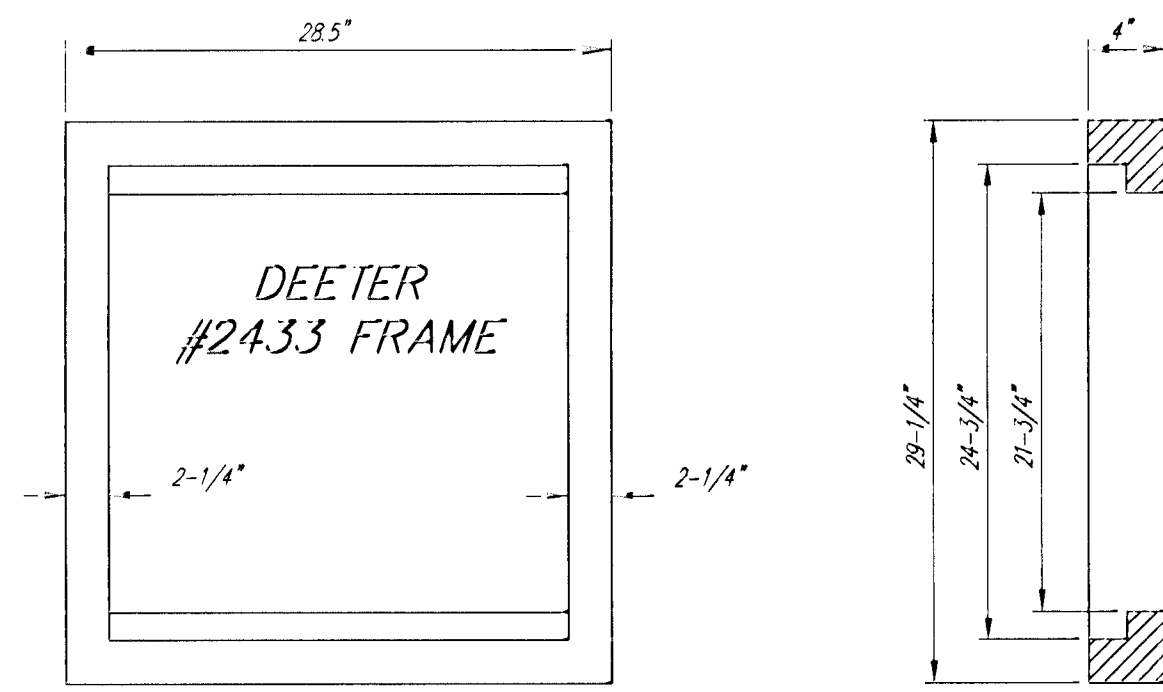
**BENCHMARKS:**

BM #1: "□" chiseled on Top of West Curb between Lot 19 & 20 on Greenwich Rd.  
Elev. = 160.72 (City Datum)

BM #2: "□" chiseled on Top of West Signal Pole Base in front of Lot 16 on Greenwich Rd.  
Elev. = 158.51 (City Datum)



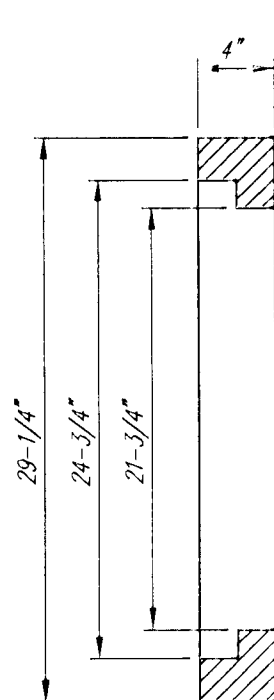
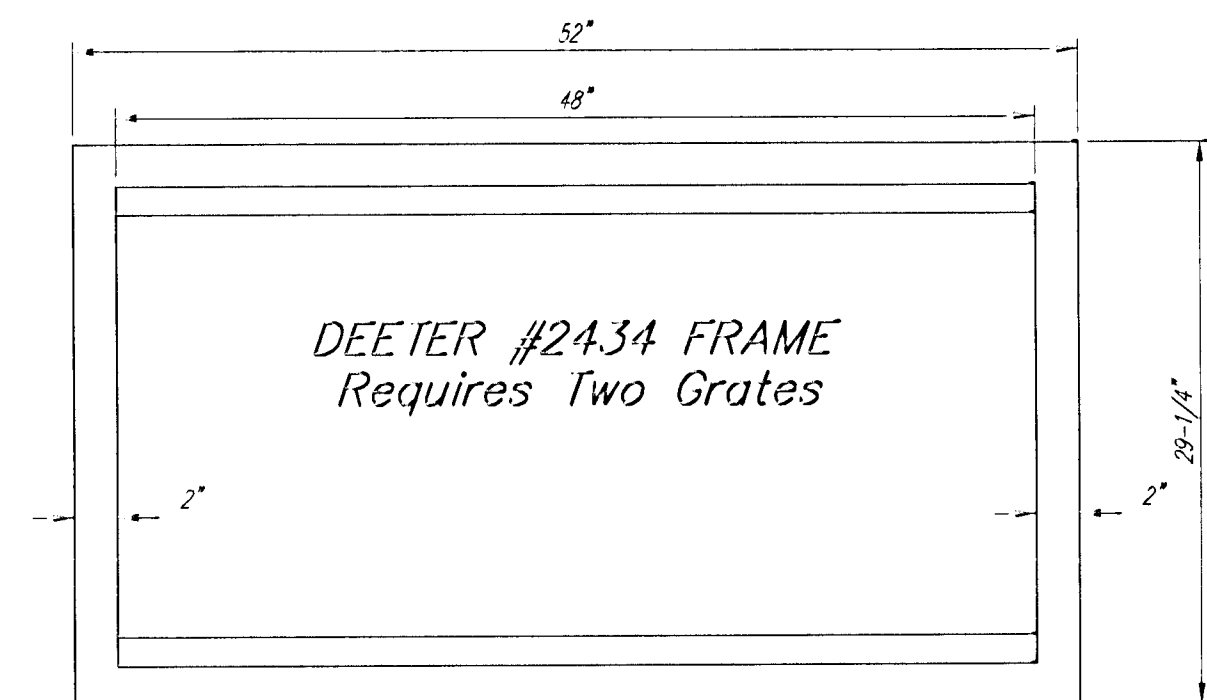
		East Kellogg Acres <b>LINE 3</b> STORM WATER SEWER IMPROVEMENTS	
<small>Baughman Company, P.A. 315 Ellis St. Wichita, KS 67201 P 316.262.7271 F 316.262.0149                  ENGINEERING   SURVEYING   PLANNING   LANDSCAPE ARCHITECTURE</small>			
PROJECT NUMBER 1686 PPS	DESIGN TK	DRAWN JEB	DATE 07/06
REVISIONS:	APPROVED	SCALE None	SHEET
			<b>4 OF 5</b>
<small>F:\Hydro\East Kellogg Acres\SWSL.dwg</small>			<small>05-09-2738</small>



DEETER #2433 GRATE

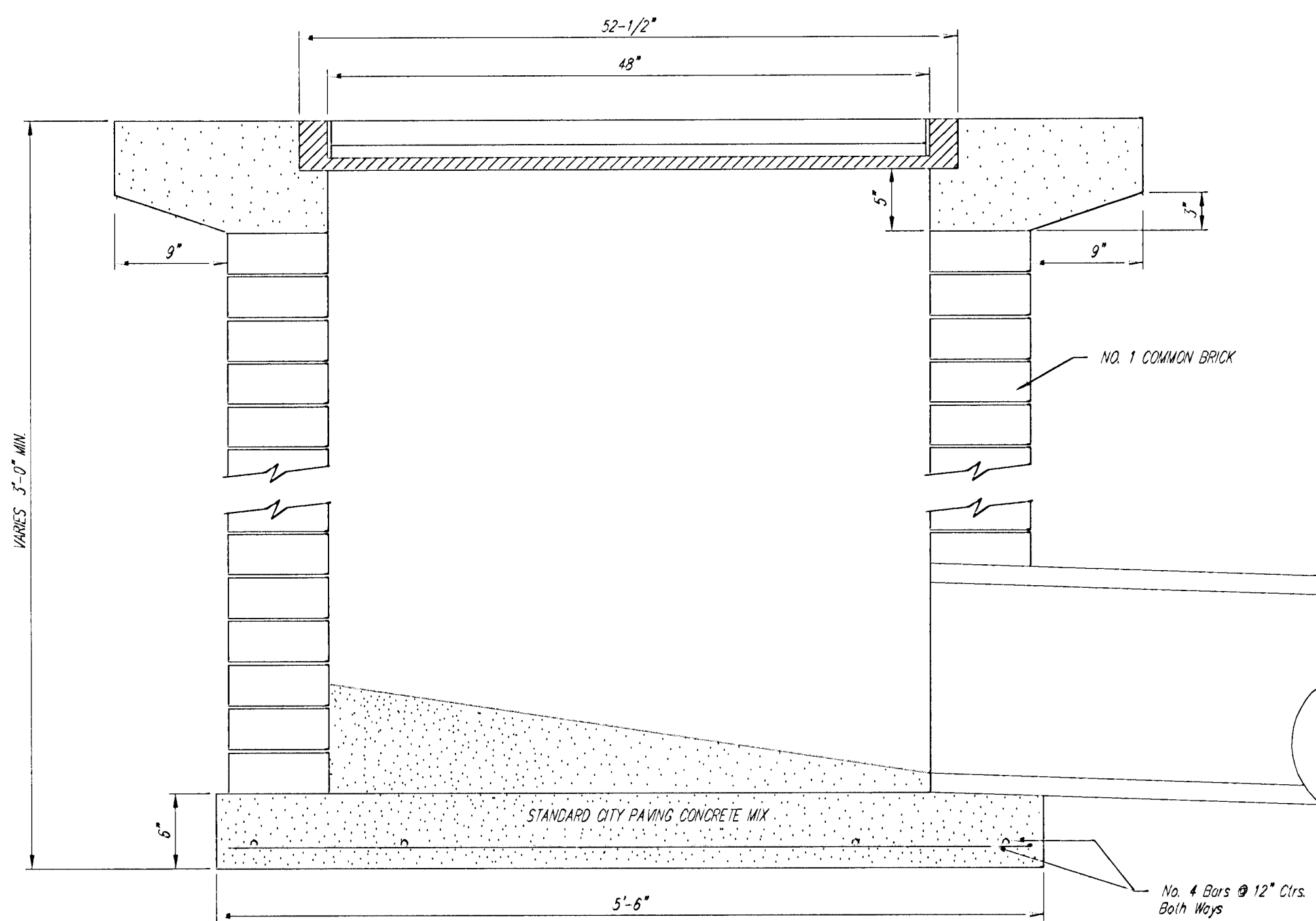
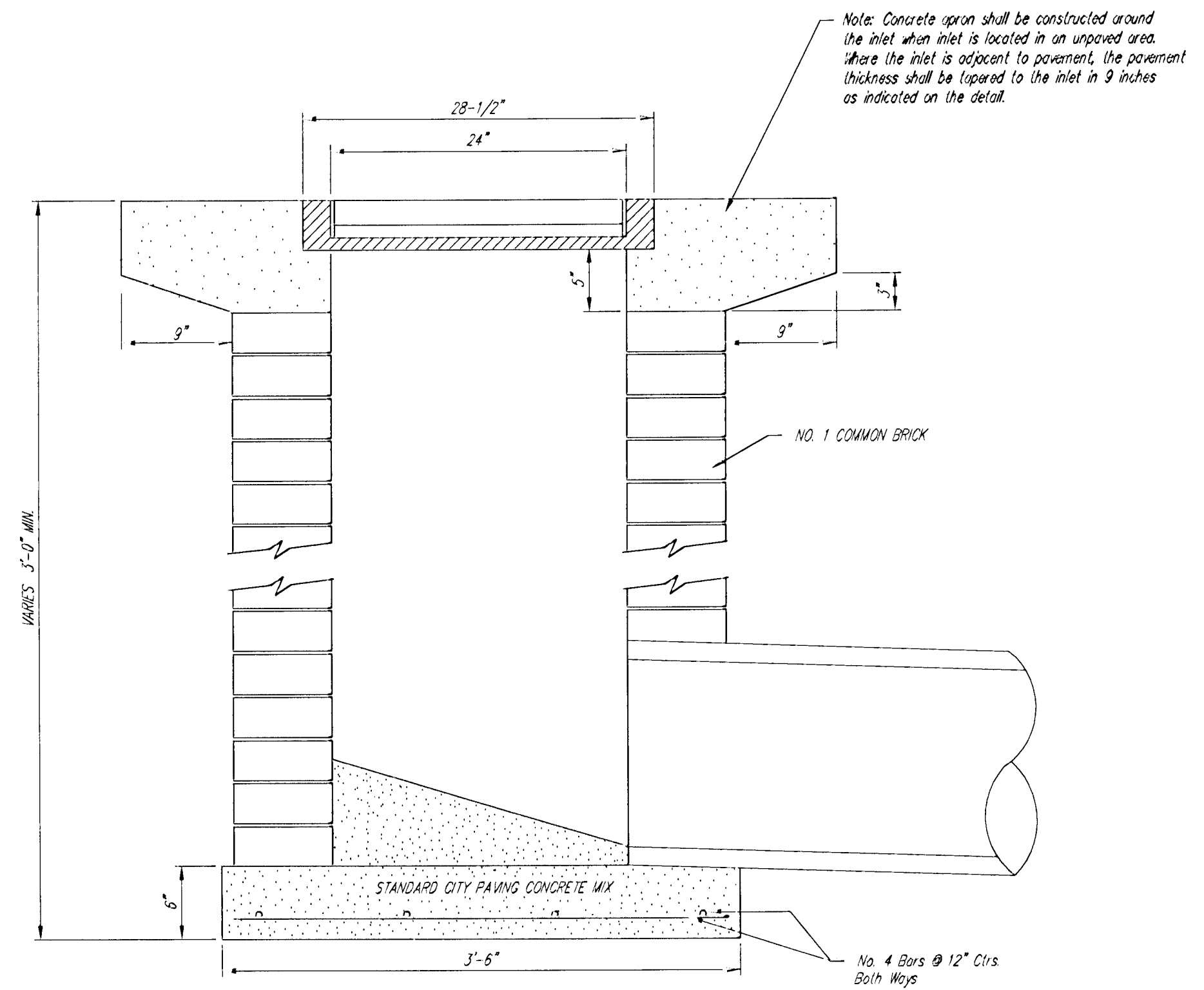
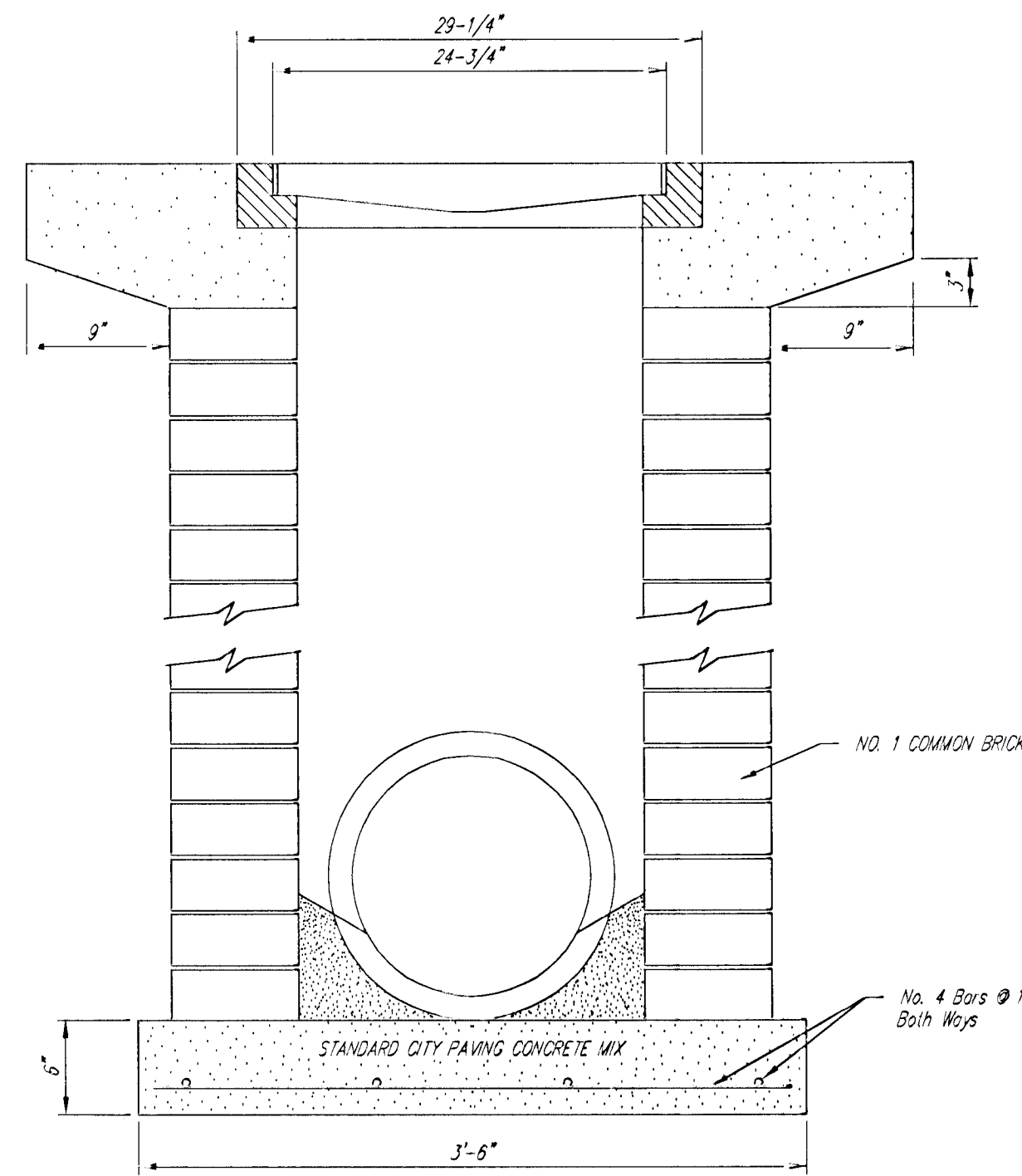
24" x 24" Frame and Grate Detail

NOTE: Grates shall be imprinted on the top surface with "CITY OF WICHITA" using letters at least 1" in height. Other marking methods may be approved by the engineer.



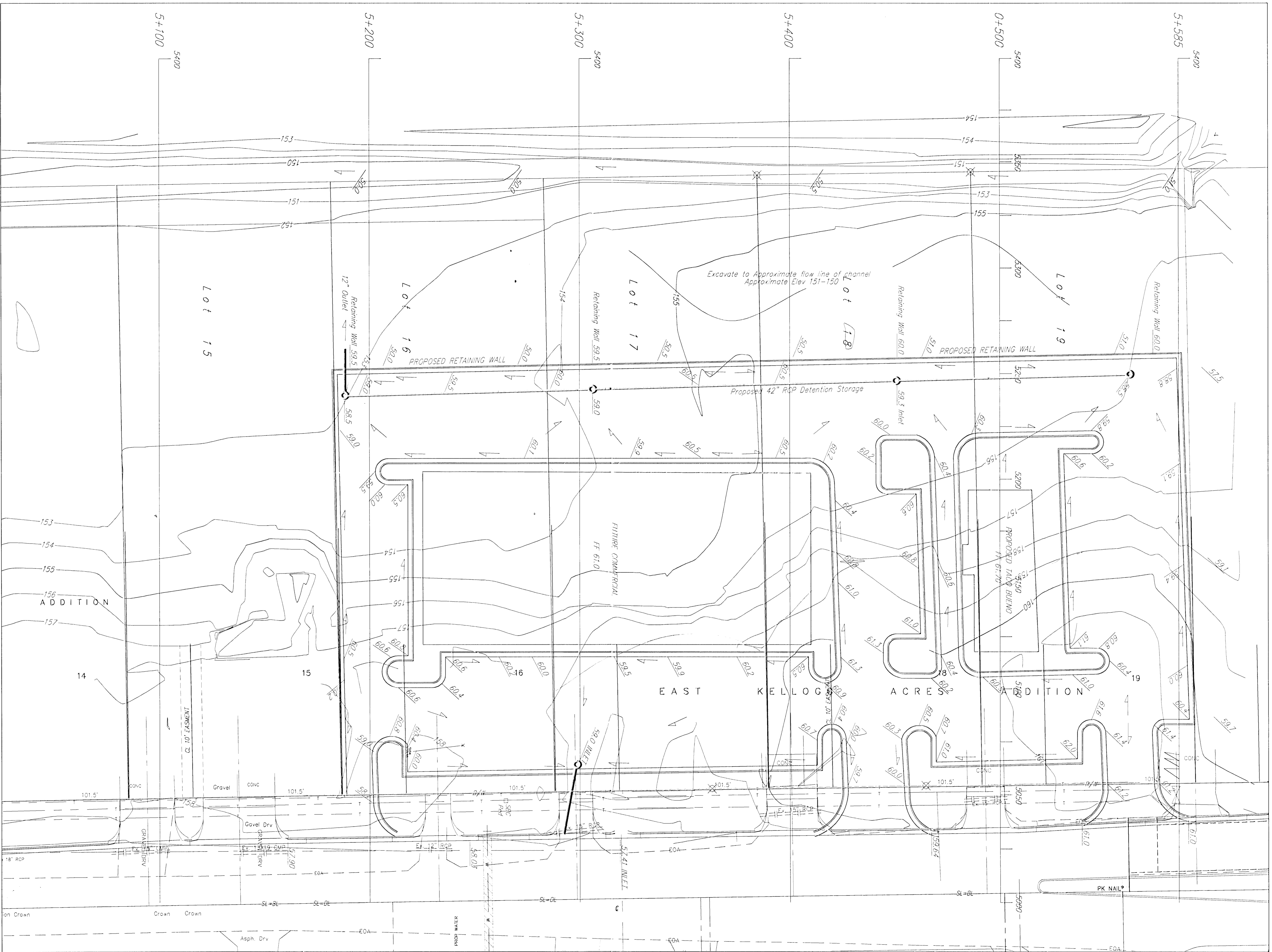
DEETER #2434 FRAME  
Requires Two Grates

Double 24" x 24" Frame Detail



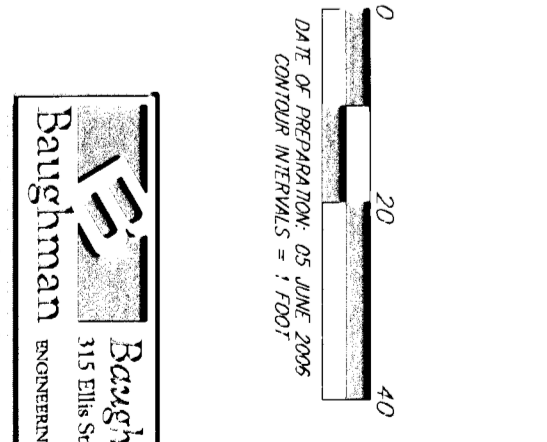
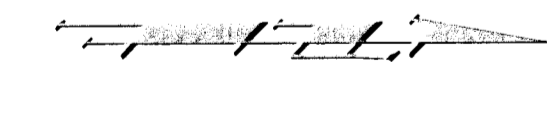
	City of Wichita Standard	
	Drop Inlet Detail	
Baughman Company, P.A. 315 Ellis St. Wichita, KS 67211 F 316-262-7271 F 316-262-7449 ENGINEERING   SURVEYING   PLANNING   LANDSCAPE ARCHITECTURE		
PROJECT NUMBER 1686 PPS	DESIGN C.O.W.	DRAWN Staff
APPROVED	DATE 07/06	SCALE None
REVISIONS:	SHEET 5 OF 5	
East Kellogg Acres\Drop Inlet Detail		

# DRAINAGE & GRADING PLAN EAST KELLOGG ACRES ADDITION WICHITA, SEDGWICK COUNTY, KANSAS



NOTE: No FEMA Floodplain or Floodway Boundaries are mapped on this Property. The Base Flood Elevation used (159.8) is per PEC Spring Branch Master Drainage Plan, December 2004.

Existing channel to be widened and hydraulically improved upon construction, i.e. Removal of trees and/or brush will be done upon construction.



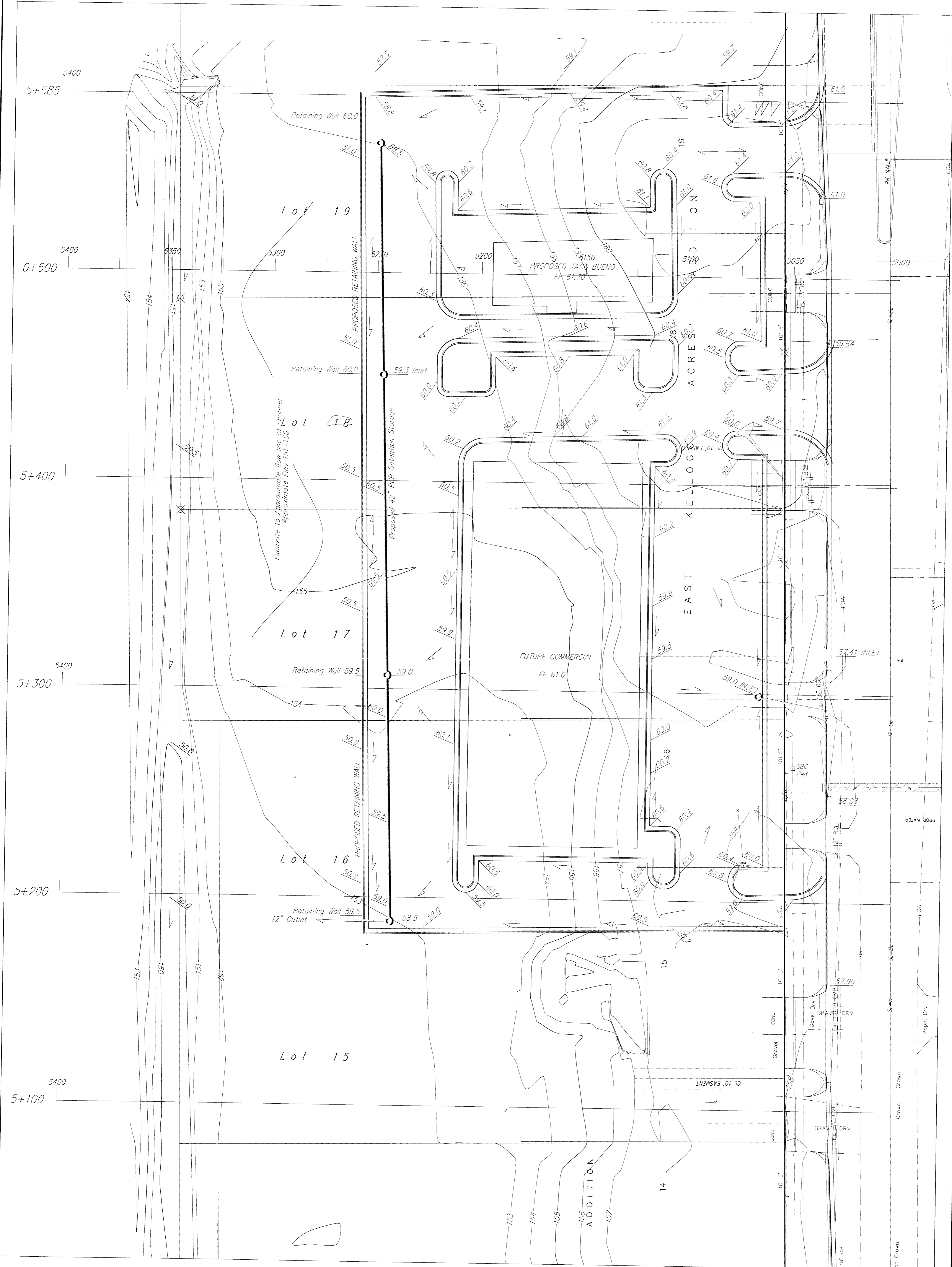
**Raichman Company, P.A.**  
 3155 S.W. 10th, Wichita, KS 67211 | P: 316.262.2271 | F: 316.262.5148  
 ENGINEERING | SURVEYING | PLANNING | LANDSCAPE ARCHITECTURE

DESIGNED: 27 JUNE 2006  
 DATE: 05 JUNE 2006

# DRAINAGE & GRADING PLAN

## EAST KELLOGG ACRES ADDITION

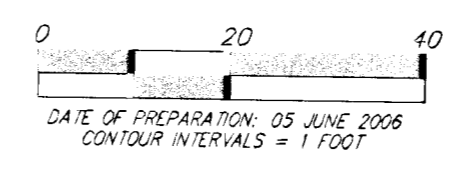
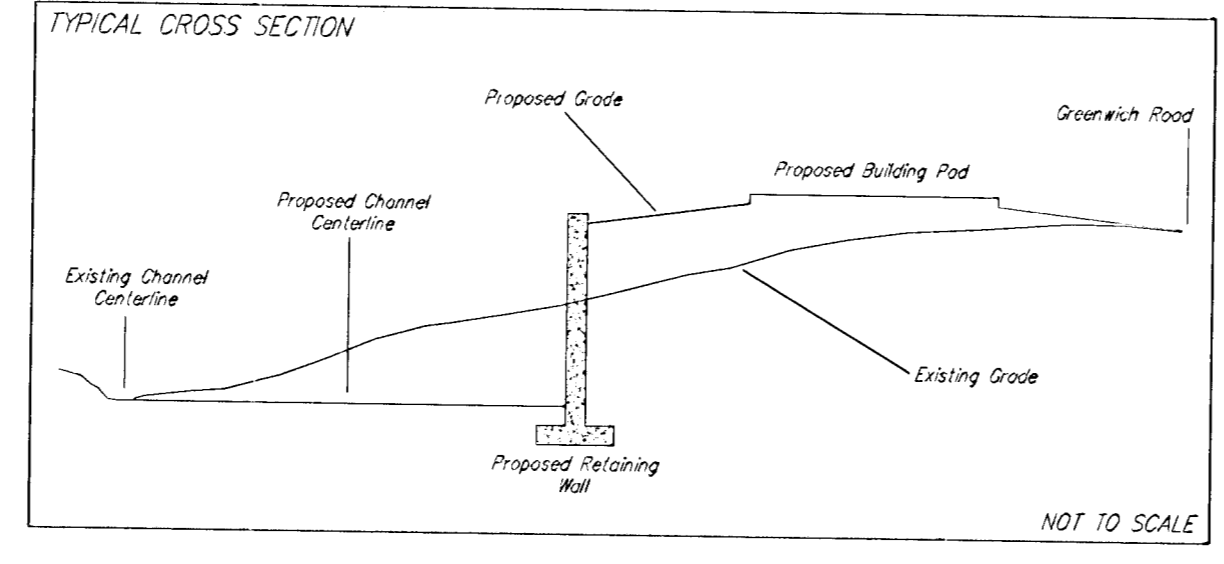
### WICHITA, SEDGWICK COUNTY, KANSAS



NOTE: No FEMA Floodplain or Floodway Boundaries are mapped on this property. The Base Flood Elevation used (159.8) is per PEC 'Spring Branch Master Drainage Plan', December 2004.

Existing channel to be widened and hydraulically improved upon construction. i.e. Removal of trees and/or brush will be done upon construction.

NOTE: Grades are approximate and represent flow lines of curb and pavement.

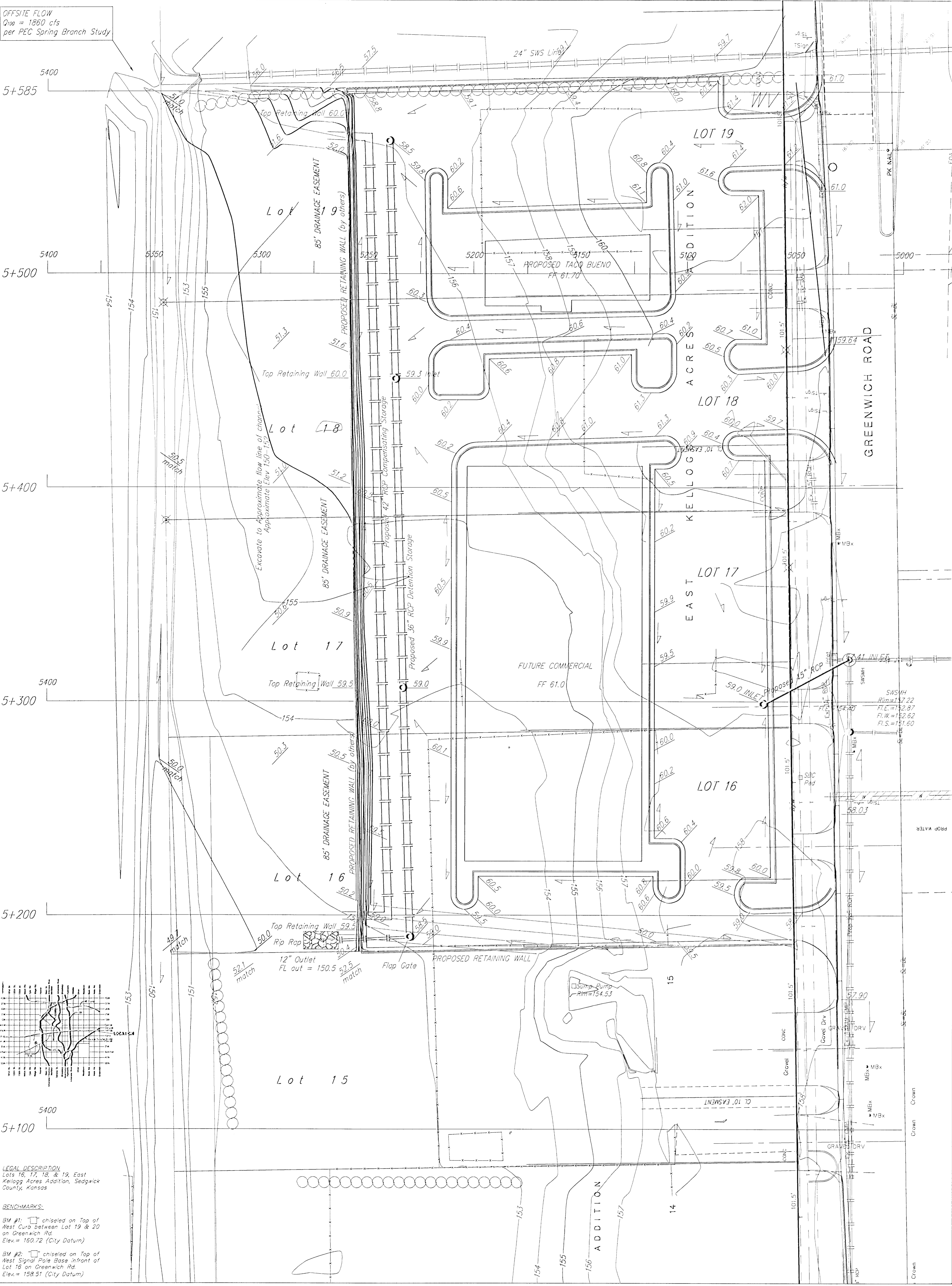


REVISED 27 JUNE 2006  
05 JUNE 2006

**Baughman Company, P.A.**  
315 88th St. Wichita, KS 67211 P 316-262-7271 F 316-262-0149  
Baughman ENGINEERING | SURVEYING | PLANNING | LANDSCAPE ARCHITECTURE  
F:\WIP\Projects\EastKelloggAcres-19-08\EASTKELLOGGACRES\_grade\_drain-plan.dwg

# DRAINAGE & GRADING PLAN EAST KELLOGG ACRES ADDITION WICHITA, SEDGWICK COUNTY, KANSAS

OFFSHORE FLOW  
Q<sub>100</sub> = 1860 cfs  
per PEC Spring Branch Study



**LEGAL DESCRIPTION**  
Lots 16, 17, 18, & 19, East Kellogg Acres Addition, Sedgwick County, Kansas

**BENCHMARKS:**  
BM #1: Chiseled on Top of West Curb between Lot 19 & 20 on Greenwich Rd. Elev. = 160.72 (City Datum)  
BM #2: Chiseled on Top of West Signal Pole Base in front of Lot 18 on Greenwich Rd. Elev. = 158.51 (City Datum)

**NOTE:** No FEMA Floodplain or Floodway Boundaries are mapped on this property. The Base Flood Elevation used (159.2) is per PEC Spring Branch Master Drainage Plan, December 2004.

**NOTE:** Grades are approximate and represent flow lines of curb and pavement.

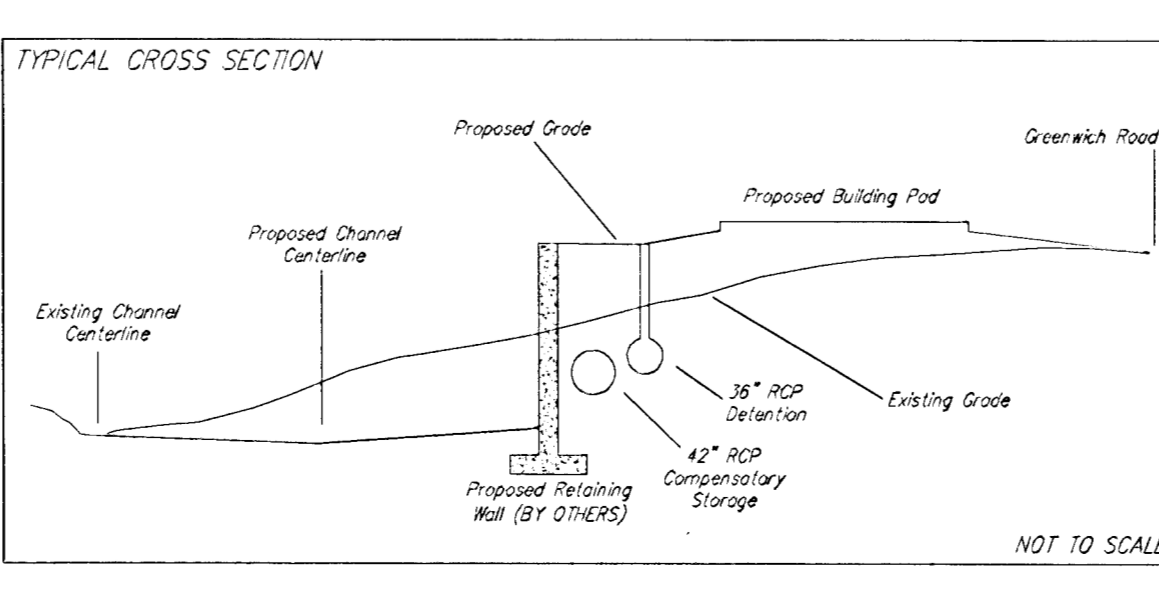
Existing channel to be widened and hydraulically improved upon construction. (i.e. Removal of trees and/or brush will be done upon construction)

**COMPENSATORY STORAGE WORKSHEET**

Channel Number	Channel	Proposed Storage (cu ft) @ 10' H	Channel Storage (cu ft) @ 10' H	Retention Total (cu ft) @ 10' H
101	101	100	100	200
102	102	200	200	400
103	103	300	300	600
104	104	400	400	800
105	105	500	500	1000
106	106	600	600	1200
107	107	700	700	1400
108	108	800	800	1600
109	109	900	900	1800
110	110	1000	1000	2000
111	111	1100	1100	2200
112	112	1200	1200	2400
113	113	1300	1300	2600
114	114	1400	1400	2800
115	115	1500	1500	3000
116	116	1600	1600	3200
117	117	1700	1700	3400
118	118	1800	1800	3600
119	119	1900	1900	3800
120	120	2000	2000	4000

**DETENTION WORKSHEET**

Channel Number	Channel	Proposed Storage (cu ft) @ 10' H	Channel Storage (cu ft) @ 10' H	Retention Total (cu ft) @ 10' H
101	101	100	100	200
102	102	200	200	400
103	103	300	300	600
104	104	400	400	800
105	105	500	500	1000
106	106	600	600	1200
107	107	700	700	1400
108	108	800	800	1600
109	109	900	900	1800
110	110	1000	1000	2000
111	111	1100	1100	2200
112	112	1200	1200	2400
113	113	1300	1300	2600
114	114	1400	1400	2800
115	115	1500	1500	3000
116	116	1600	1600	3200
117	117	1700	1700	3400
118	118	1800	1800	3600
119	119	1900	1900	3800
120	120	2000	2000	4000



0 20 40

DATE OF PREPARATION: 05 JUNE 2006  
CONTOUR INTERVALS = 1 FOOT

**WHEAT WOODEN ENGINEERS**  
315 E. 10th St., Wichita, KS 67211 P 316-262-2121 F 316-262-4149  
REVISED 05 JULY 2006  
REVISED 08 JULY 2006  
REVISED 27 JUNE 2008  
08 JUNE 2008

**Baughman Company, P.A.**  
115 E. 10th St., Wichita, KS 67211 P 316-262-2121 F 316-262-4149  
ENGINEERS | SURVEYORS | PLANNERS | LANDSCAPE ARCHITECTS

F:\V\PROJ\Projects\EastKelloggAcres-10-08\EAS\KELLOGGACRES\_grade-drain-plan\REVX.dwg