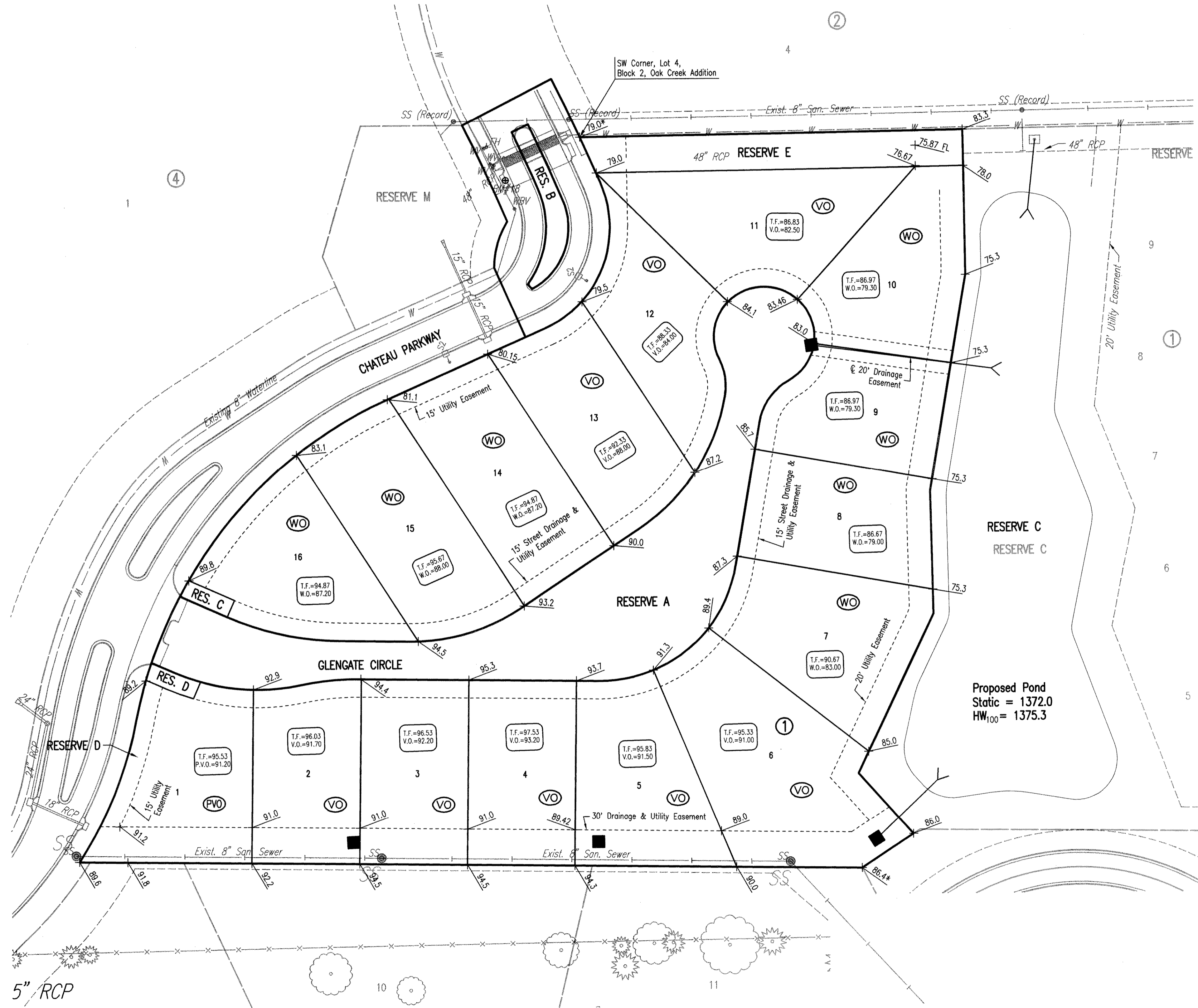
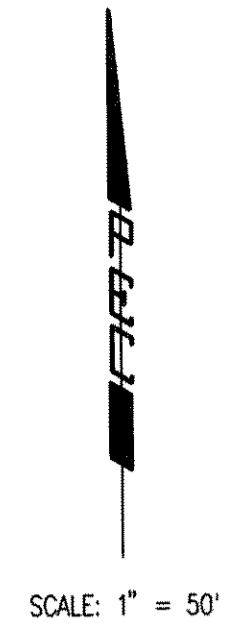


GLENGATE WEST

AN ADDITION TO WICHITA, SEDGWICK COUNTY, KANSAS

FOUR-CORNER PLAN



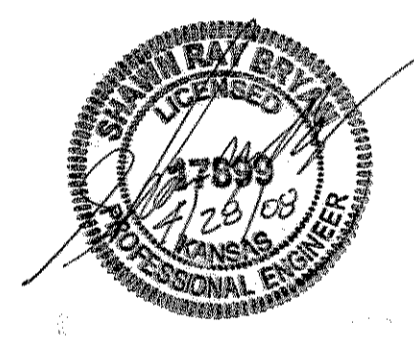
BENCHMARKS BM

BM #209
Chiseled "d" on NW corner of traffic signal base, at SW corner of Greenwich Road & 21st Street North
Elev. = 1363.54 N.G.V.D.
176.14 City Datum

BM #215
Chiseled "+" in top center curb inlet 600' W of Greenwich Road on S side of 21st Street North.
Elev. = 1363.265 N.G.V.D.
175.865 City Datum

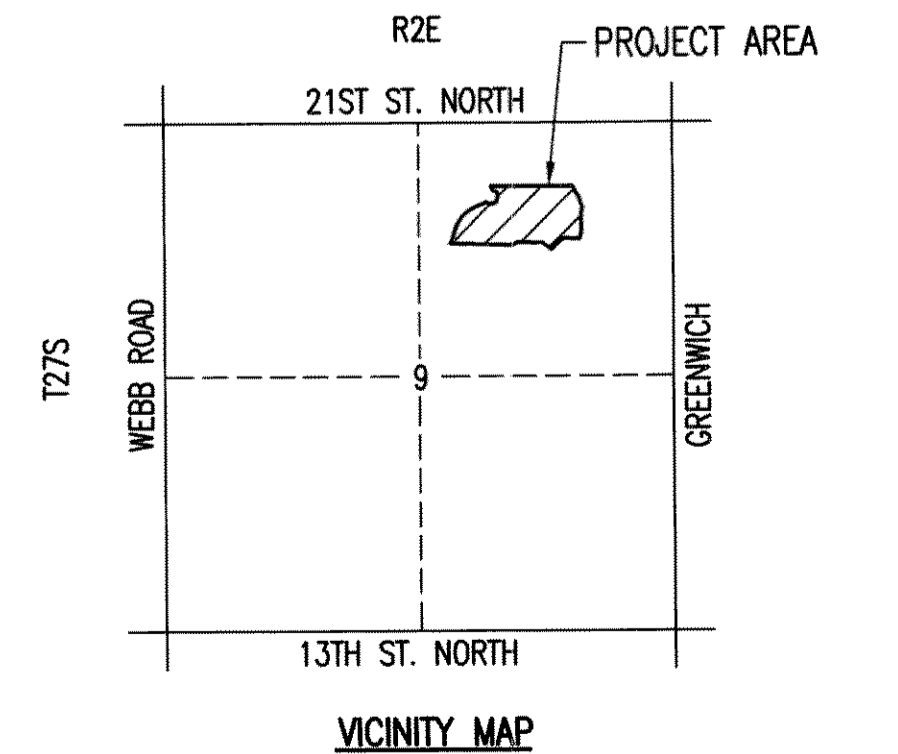
BM #216
Chiseled "d" on S end of curb & gutter at C of Median, Target entrance on N side of 21st Street North 1400' ± W of Greenwich Road.
Elev. = 1364.55 N.G.V.D.
177.15 City Datum

- LEGEND**
- SPOT ELEVATION
 - HIGH POINT ELEVATION
 - MATCH EXISTING ELEVATION
 - STORM SEWER AND INLET
 - STORM SEWER AND MANHOLE
 - VIEW-OUT BASEMENT
 - VIEW-OUT BASEMENT
 - VIEW-OUT BASEMENT
- ADD 1300 TO ELEVATIONS FOR N.G.V.D. DATUM.



MINIMUM PAD ELEVATIONS (LOWEST OPENING) SHALL BE AS FOLLOWS:

BLOCK	CITY DATUM	N.G.V.D.
LOT 6	197.6	1385.0
LOT 7	191.6	1379.0
LOTS 8-10	197.6	1379.0



Ⓢ Backyard drainage protected by private cross-lot drainage agreement

Drawn 04-14-2008 10:01:34 AM by ACE
 PLO 03/16/08 04:28:08 4:27:25 PM
 PLO 03/16/08 07:05:07 07:05:07 4:27:25 PM