

Page 1 not in folder.

SM

- M. The applicant shall install or guarantee the installation of all utilities and facilities that are applicable and described in Article 8 of the MAPC Subdivision Regulations. (Water service and fire hydrants required by Article 8 for fire protection shall be as per the direction and approval of the Chief of the Fire Department.)
- N. The applicant's engineer is advised that the Register of Deeds is requiring the name(s) of the notary public, who acknowledges the signatures on this plat, to be printed beneath the notary's signature.
- O. To receive mail delivery without delay, and to avoid unnecessary expense, the applicant is advised of the necessity to meet with the U.S. Postal Service Growth Management Coordinator (Phone 316-946-4556) prior to development of the plat so that the type of delivery, and the tentative mailbox locations can be determined.
- P. The applicant is advised that various State and Federal requirements (specifically but not limited to the Army Corps of Engineers, Kanopolis Project Office, Rt. 1, Box 317, Valley Center, KS 67147) for the control of soil and wind erosion and the protection of wetlands may impact how this site can be developed. It is the applicant's responsibility to contact all appropriate agencies to determine any such requirements.
- Q. The owner of the subdivision should be aware of the fact that the development of any subdivision greater than five (5) acres in size may require an NPDES Storm Water Discharge Permit from the Kansas Department of Health and Environment in Topeka. Further, on all construction sites, the City of Wichita requires that best management practices be used to reduce pollutant loadings in storm water runoffs.
- R. Perimeter closure computations shall be submitted with the final plat tracing.
- S. Recording of the plat within thirty (30) days after approval by the City Council and/or County Commission.
- T. The representatives from the utility companies should be prepared to comment on the need for any additional utility easements to be platted on this property.
- U. The applicant is reminded that a disk shall be submitted with the final plat tracing to the Planning Department detailing this plat in digital format in AutoCAD. This will be used by the City and County GIS Department.

FINAL BOUNDARY CLOSURE FOR KANSAS FOOD BANK WAREHOUSE ADDITION

PNT. #

100	North: 5570.8485	East : 5035.0000
	Line Course: N 89°41'29" E	Length: 195.15'
43	North: 5571.8997	East : 5230.1472
	Line Course: S 00°00'00" W	Length: 160.01'
101	North: 5411.8897	East : 5230.1472
	Line Course: N 89°41'01" E	Length: 46.07'
41	North: 5412.1441	East : 5276.2165
	Line Course: S 19°09'12" E	Length: 114.43'
104	North: 5304.0485	East : 5313.7606
	Line Course: S 00°19'28" E	Length: 41.69'
105	North: 5262.3591	East : 5313.9967
	Line Course: S 89°40'32" W	Length: 279.00'
103	North: 5260.7793	East : 5035.0012
	Line Course: N 00°00'00" E	Length: 310.08'
100	North: 5570.8593	East : 5035.0012

Perimeter: 1146.44' Area: 71,019 sq. ft. 1.63 acres

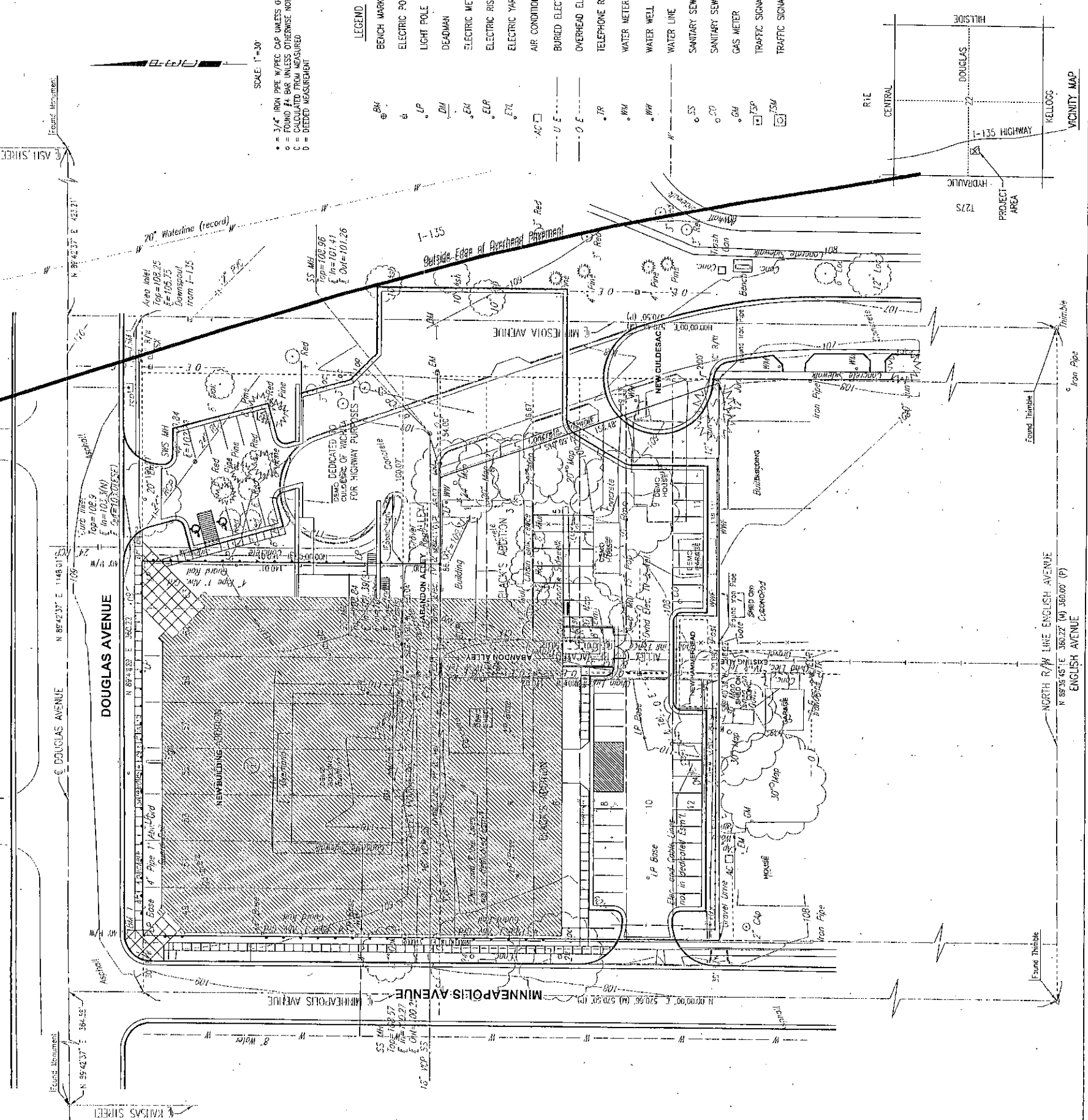
FINAL BOUNDARY CLOSURE FOR KANSAS FOOD BANK WAREHOUSE ADDITION

PNT. #

100	North: 5570.8485	East : 5035.0000
	Line Course: N 89°41'29" E Length: 195.15'	
43	North: 5571.8997	East : 5230.1472
	Line Course: S 00°00'00" W Length: 160.01'	
101	North: 5411.8897	East : 5230.1472
	Line Course: N 89°41'01" E Length: 46.07'	
41	North: 5412.1441	East : 5276.2165
	Line Course: S 19°09'12" E Length: 114.43'	
104	North: 5304.0485	East : 5313.7606
	Line Course: S 00°19'28" E Length: 41.69'	
105	North: 5262.3591	East : 5313.9967
	Line Course: S 89°40'32" W Length: 279.00'	
103	North: 5260.7793	East : 5035.0012
	Line Course: N 00°00'00" E Length: 310.08'	
100	North: 5570.8593	East : 5035.0012

Perimeter: 1146.44' Area: 71,019 sq. ft. 1.63 acres

KANSAS FOOD BANK WAREHOUSE ADDITION TO WICHITA, SEDGWICK COUNTY, KANSAS



BELOW BENCH MARK ON N.W. CORNER TRAFFIC SIGNAL LIGHT BASE AT S.W. CORNER DOUGLAS AND MINNEAPOLIS, ELEVATION CITY DATUM
 70' WATERLINE (REWORK)
 1-1.55
 1-1.55 HIGHWAY
 3053TH
 1725
 1-1.55 HIGHWAY
 PROJECT AREA
 RILEY CENTRAL
 DOUGLAS
 3053TH
 1725
 1-1.55 HIGHWAY
 PROJECT AREA
 RILEY CENTRAL
 DOUGLAS
 3053TH
 1725
 1-1.55 HIGHWAY
 PROJECT AREA

BELOW BENCH MARK ON N.W. CORNER TRAFFIC SIGNAL LIGHT BASE AT S.W. CORNER DOUGLAS AND MINNEAPOLIS, ELEVATION CITY DATUM
 70' WATERLINE (REWORK)
 1-1.55
 1-1.55 HIGHWAY
 3053TH
 1725
 1-1.55 HIGHWAY
 PROJECT AREA
 RILEY CENTRAL
 DOUGLAS
 3053TH
 1725
 1-1.55 HIGHWAY
 PROJECT AREA

BELOW BENCH MARK ON N.W. CORNER TRAFFIC SIGNAL LIGHT BASE AT S.W. CORNER DOUGLAS AND MINNEAPOLIS, ELEVATION CITY DATUM
 70' WATERLINE (REWORK)
 1-1.55
 1-1.55 HIGHWAY
 3053TH
 1725
 1-1.55 HIGHWAY
 PROJECT AREA
 RILEY CENTRAL
 DOUGLAS
 3053TH
 1725
 1-1.55 HIGHWAY
 PROJECT AREA

BELOW BENCH MARK ON N.W. CORNER TRAFFIC SIGNAL LIGHT BASE AT S.W. CORNER DOUGLAS AND MINNEAPOLIS, ELEVATION CITY DATUM
 70' WATERLINE (REWORK)
 1-1.55
 1-1.55 HIGHWAY
 3053TH
 1725
 1-1.55 HIGHWAY
 PROJECT AREA
 RILEY CENTRAL
 DOUGLAS
 3053TH
 1725
 1-1.55 HIGHWAY
 PROJECT AREA

BELOW BENCH MARK ON N.W. CORNER TRAFFIC SIGNAL LIGHT BASE AT S.W. CORNER DOUGLAS AND MINNEAPOLIS, ELEVATION CITY DATUM
 70' WATERLINE (REWORK)
 1-1.55
 1-1.55 HIGHWAY
 3053TH
 1725
 1-1.55 HIGHWAY
 PROJECT AREA
 RILEY CENTRAL
 DOUGLAS
 3053TH
 1725
 1-1.55 HIGHWAY
 PROJECT AREA

BELOW BENCH MARK ON N.W. CORNER TRAFFIC SIGNAL LIGHT BASE AT S.W. CORNER DOUGLAS AND MINNEAPOLIS, ELEVATION CITY DATUM
 70' WATERLINE (REWORK)
 1-1.55
 1-1.55 HIGHWAY
 3053TH
 1725
 1-1.55 HIGHWAY
 PROJECT AREA
 RILEY CENTRAL
 DOUGLAS
 3053TH
 1725
 1-1.55 HIGHWAY
 PROJECT AREA

BELOW BENCH MARK ON N.W. CORNER TRAFFIC SIGNAL LIGHT BASE AT S.W. CORNER DOUGLAS AND MINNEAPOLIS, ELEVATION CITY DATUM
 70' WATERLINE (REWORK)
 1-1.55
 1-1.55 HIGHWAY
 3053TH
 1725
 1-1.55 HIGHWAY
 PROJECT AREA
 RILEY CENTRAL
 DOUGLAS
 3053TH
 1725
 1-1.55 HIGHWAY
 PROJECT AREA

