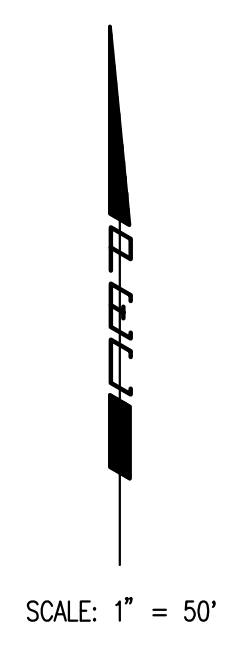


GLENGATE WEST

AN ADDITION TO WICHITA, SEDGWICK COUNTY, KANSAS

DRAINAGE PLAN

BM



BENCHMARKS *BM*

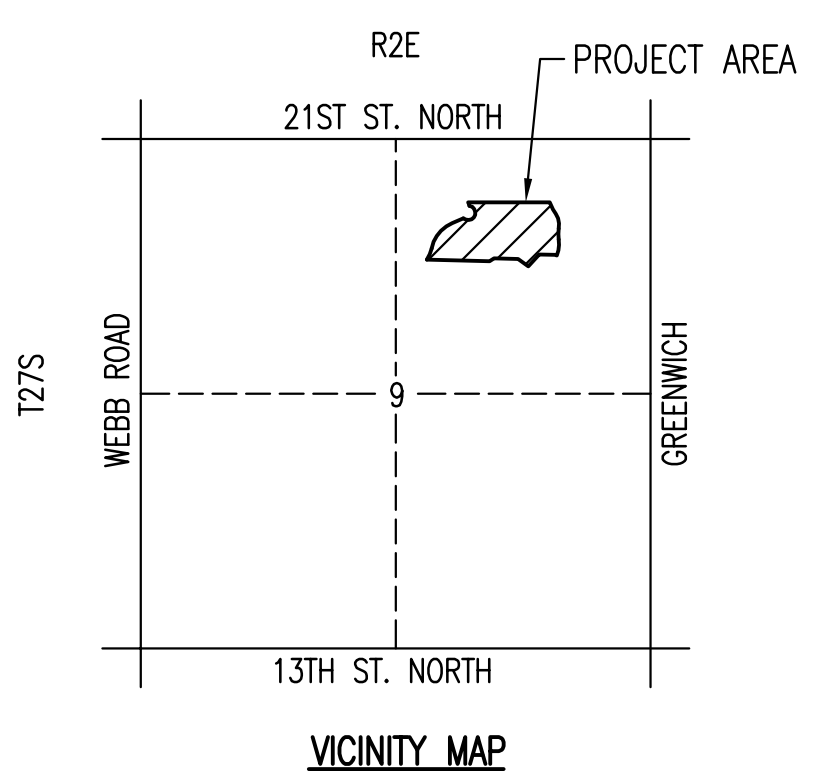
BM #209
Chiseled "1" on NW corner of traffic signal base, at SW corner of Greenwich Road & 21st Street North
Elev. = 1363.54 N.G.V.D.
176.14 City Datum

BM #215
Chiseled "+" in top center curb inlet 600' W of Greenwich Road on S side of 21st Street North.
Elev. = 1363.265 N.G.V.D.
175.865 City Datum

BM #216
Chiseled "5" on S end of curb & gutter at C of Median, Target entrance on N side of 21st Street North 1400' ± W of Greenwich Road.
Elev. = 1364.55 N.G.V.D.
177.15 City Datum

LEGEND

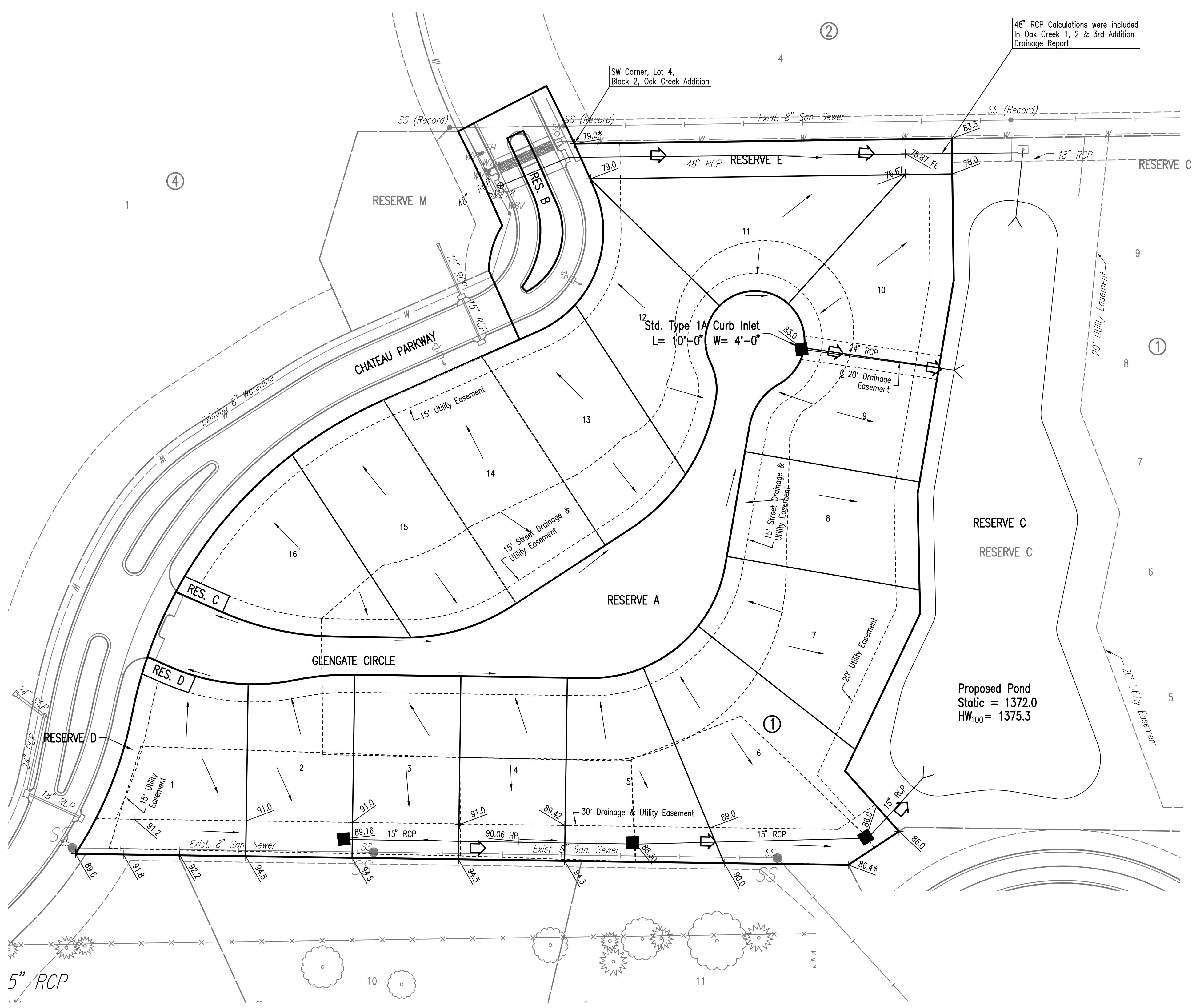
- SPOT ELEVATION
- HIGH POINT ELEVATION
- MATCH EXISTING ELEVATION
- STORM SEWER AND INLET
- STORM SEWER AND MANHOLE
- BASIN BOUNDARY
- 100-YR OVERFLOW
- FLOW DIRECTION



MINIMUM PAD ELEVATIONS (LOWEST OPENING) SHALL BE AS FOLLOWS:

BLOCK	CITY DATUM	N.G.V.D.
LOT 6	197.6	1385.0
LOT 7	191.6	1379.0
LOTS 8-10	197.6	1379.0

Ⓢ Backyard drainage protected by private cross-lot drainage agreement



48" RCP Calculations were included in Oak Creek 1, 2 & 3rd Addition Drainage Report.

SW Corner, Lot 4, Block 2, Oak Creek Addition

Saved 04-29-2008 11:11:44 AM by SBB
 Plot Scale: 1"=50' 04-29-2008 11:12:11 AM
 C:\2007\07185\07185-drawings