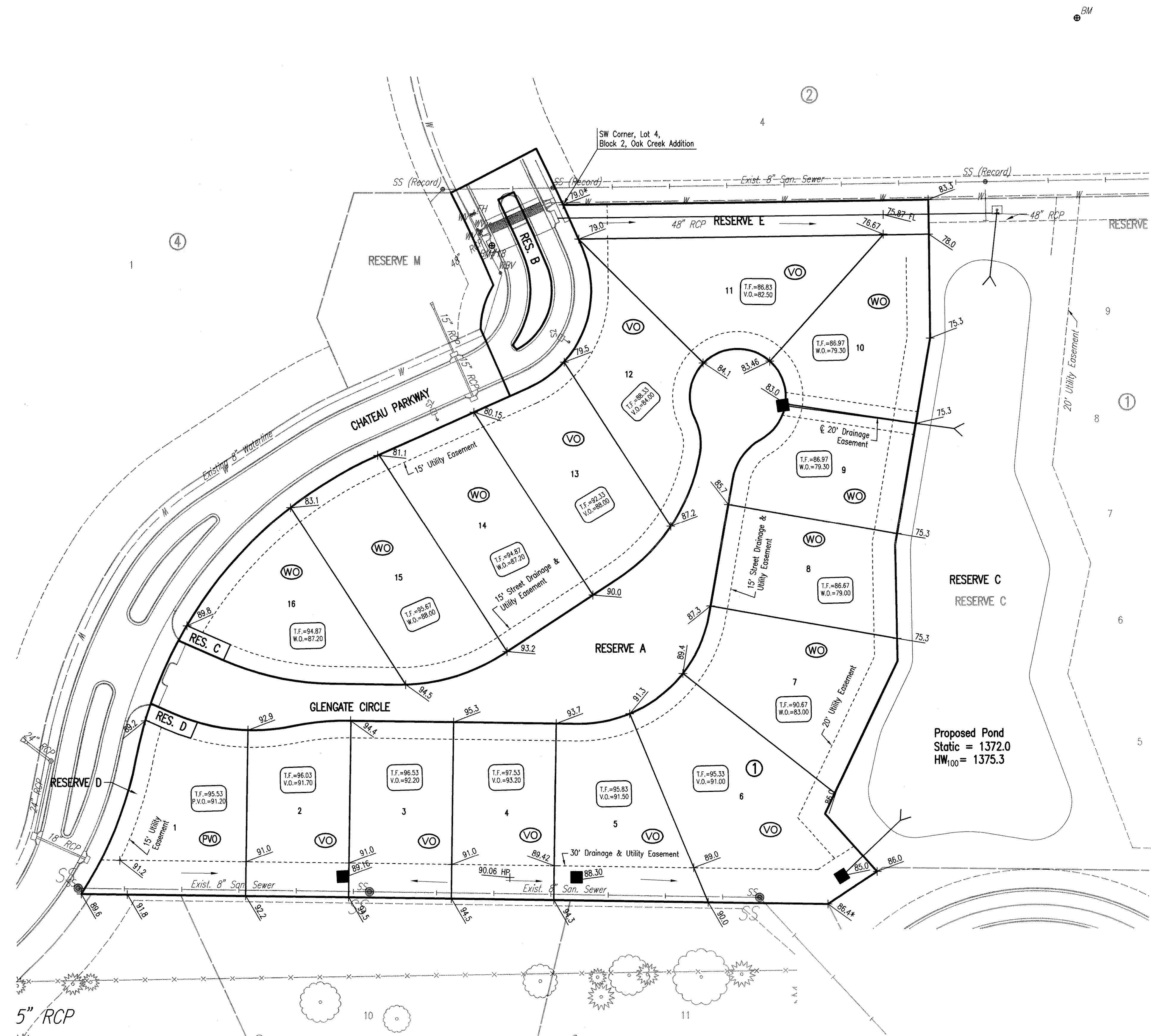
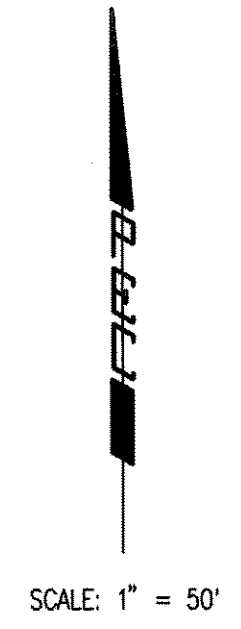


GLENGATE WEST

AN ADDITION TO WICHITA, SEDGWICK COUNTY, KANSAS

FOUR-CORNER PLAN



BENCHMARKS *BM*

BM #209
Chiseled "d" on NW corner of traffic signal base, at SW corner of Greenwich Road & 21st Street North
Elev. = 1363.54 N.G.V.D.
176.14 City Datum

BM #215
Chiseled "+" in top center curb inlet 600' W of Greenwich Road on S side of 21st Street North.
Elev. = 1363.265 N.G.V.D.
175.865 City Datum

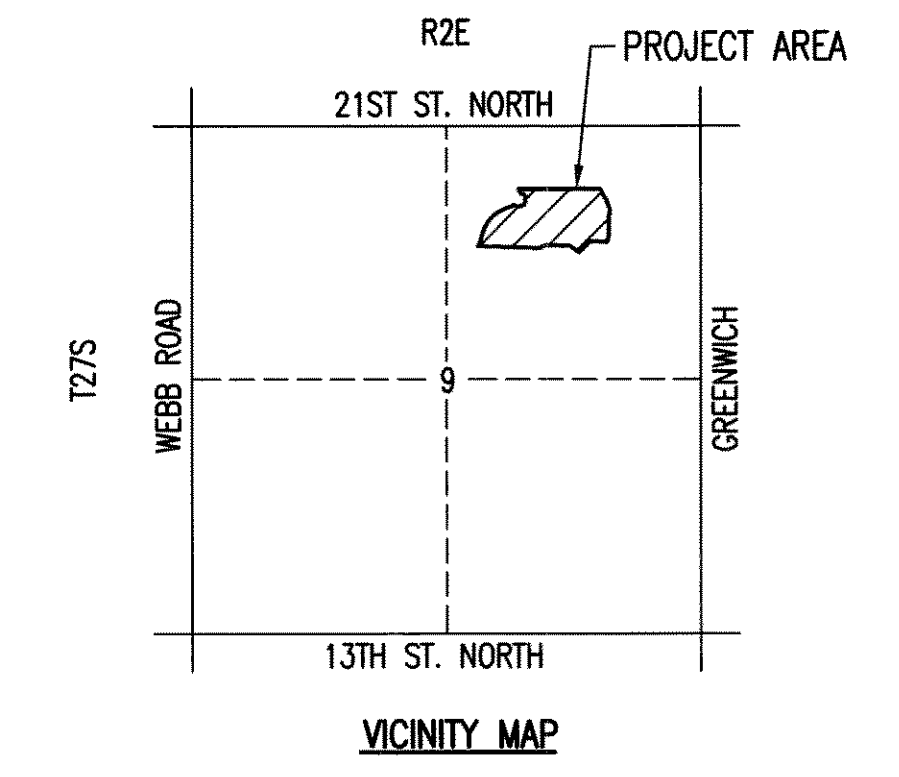
BM #216
Chiseled "d" on S end of curb & gutter at C of Median, Target entrance on N side of 21st Street North 1400' ± W of Greenwich Road.
Elev. = 1364.55 N.G.V.D.
177.15 City Datum

- LEGEND**
- SPOT ELEVATION
 - HIGH POINT ELEVATION
 - MATCH EXISTING ELEVATION
 - STORM SEWER AND INLET
 - STORM SEWER AND MANHOLE
 - VIEW-OUT BASEMENT
 - VIEW-OUT BASEMENT
 - VIEW-OUT BASEMENT
- ADD 1300 TO ELEVATIONS FOR N.G.V.D. DATUM.



MINIMUM PAD ELEVATIONS (LOWEST OPENING) SHALL BE AS FOLLOWS:

BLOCK	LOT	CITY DATUM	N.G.V.D.
1	6	197.6	1385.0
	7	191.6	1379.0
	8-10	197.6	1379.0



Backyard drainage protected by private cross-lot drainage agreement.

Saved: 04-30-2008 10:02:24 AM by: SBR
 Plot Scale: 1/50 04-30-2008 10:33:18 AM
 Q:\2007\07765\07765-4-Corner