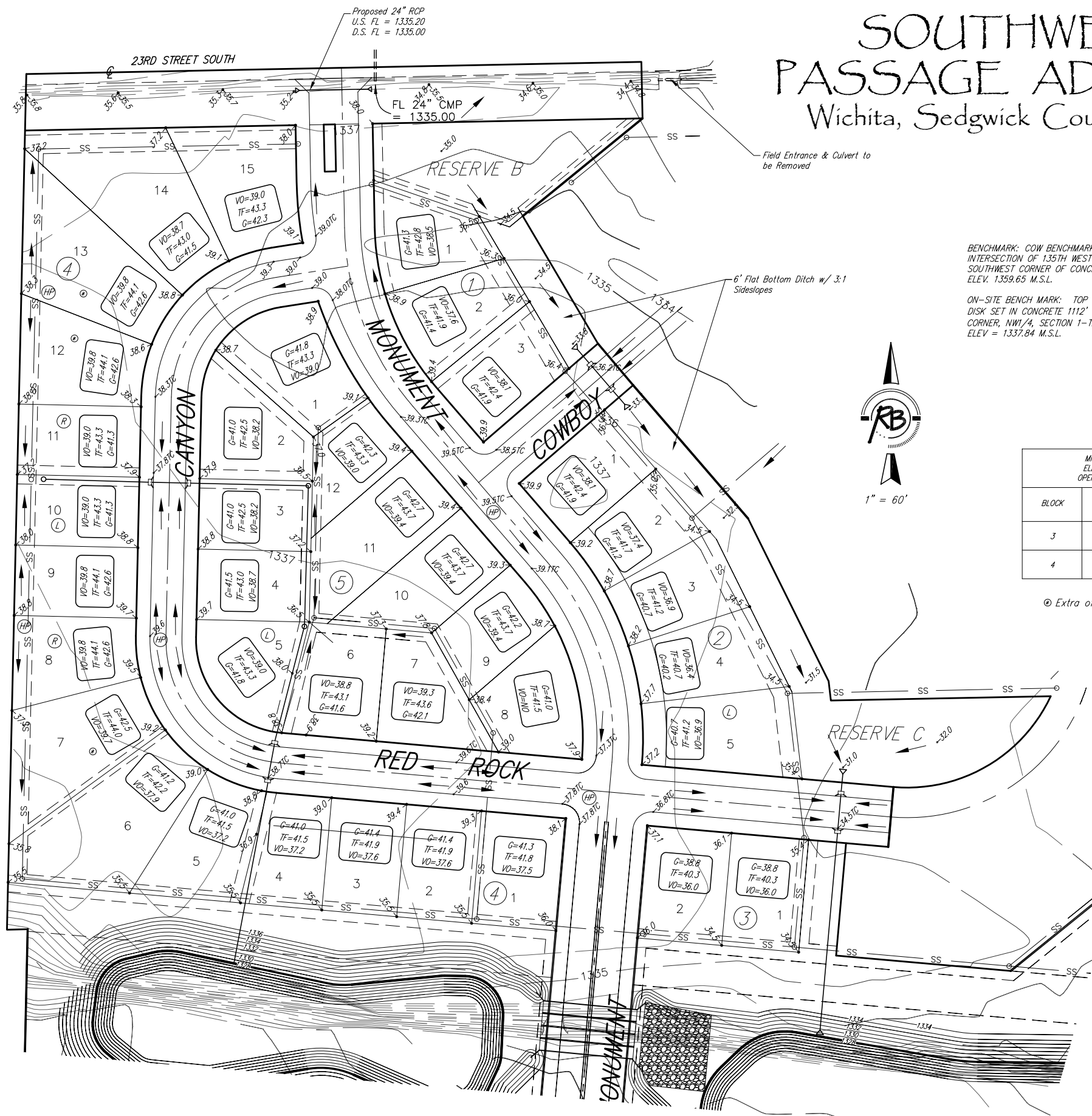


# SOUTHWEST PASSAGE ADDITION

## Wichita, Sedgwick County, Kansas



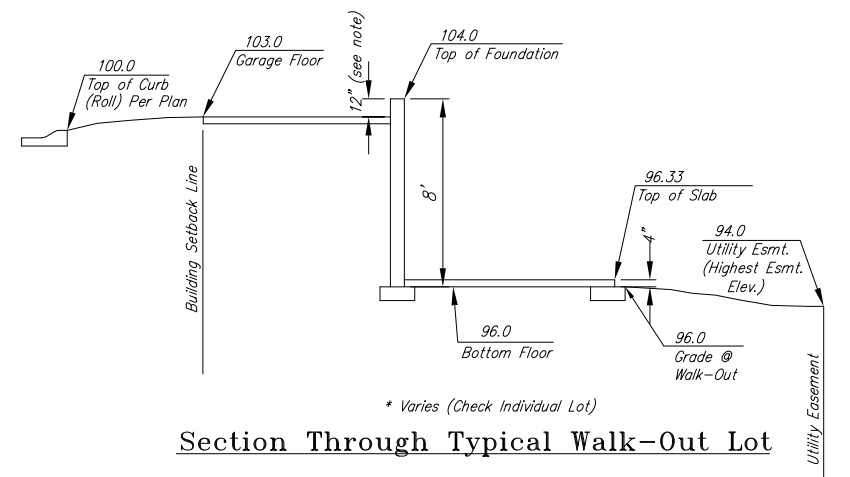
BENCHMARK: COW BENCHMARK, NE CORNER, INTERSECTION OF 135TH WEST AND PAWNEE, SOUTHWEST CORNER OF CONCRETE BASE FOR H.L.P. ELEV. 1359.65 M.S.L.

ON-SITE BENCH MARK: TOP OF RUGGLES & BOHM BRASS DISK SET IN CONCRETE 1112' W. & 50' S. OF THE NE CORNER, NW 1/4, SECTION 1-T28S-R2W. ELEV. = 1337.84 M.S.L.

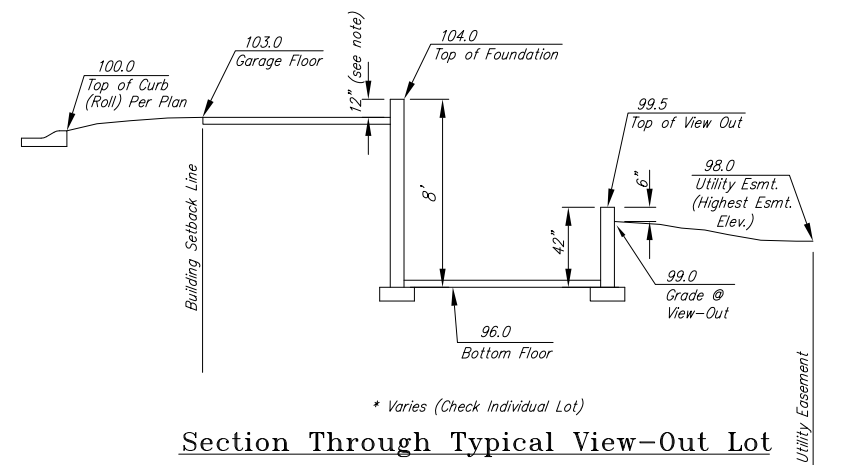


BLOCK	LOT NO.	ELEVATION (N.G.V.D.)
3	1, 2	1334.5
4	1, 2, 3, 4, 5, 6	1336.5

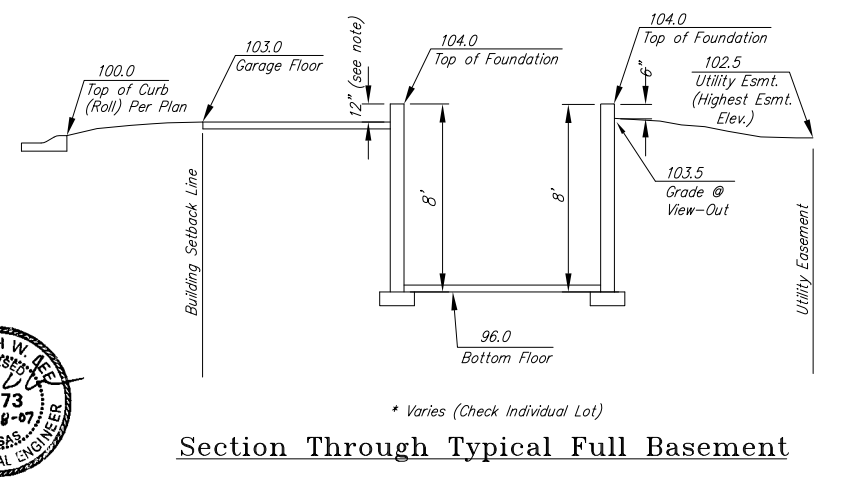
⊙ Extra offset for longer driveway



Section Through Typical Walk-Out Lot



Section Through Typical View-Out Lot



Section Through Typical Full Basement



**Ruggles & Bohm, P.A.**  
Engineering, Surveying, Land Planning  
924 North Main  
Wichita, Kansas 67203  
www.rbkansas.com  
(316) 284-8008  
(316) 284-4821 fax  
E-mail: info@rbkansas.com