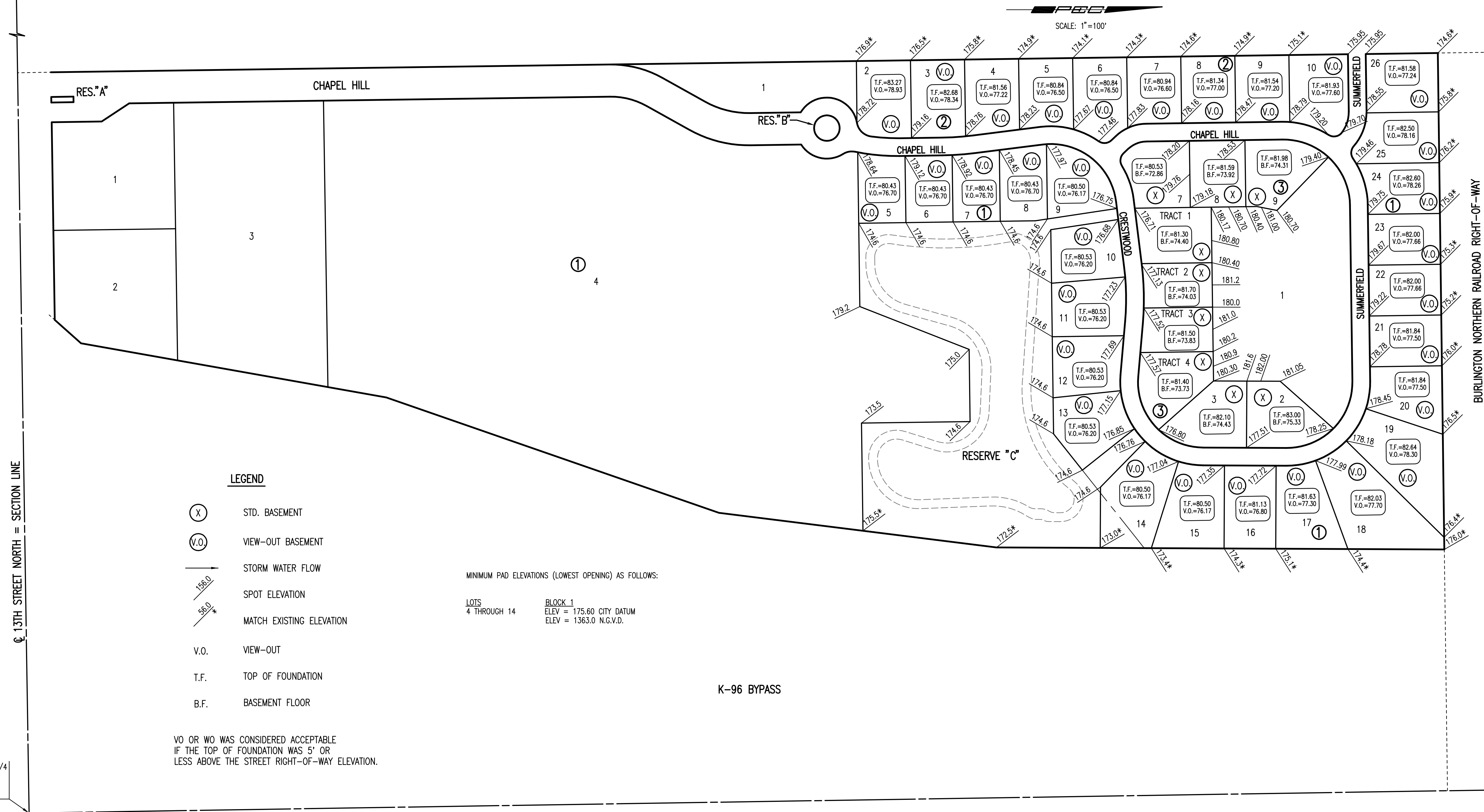


FOUR CORNER PLAN
CHAPEL HILL 2ND ADDITION
 TO WICHITA, SEDGWICK COUNTY, KANSAS

S.W. Corner, S.W. 1/4
 Sec. 10, T27S, R2E
 of the 6th P.M.
 Found 3/4" I.P.

N.W. Corner, S.W. 1/4
 Sec. 10, T27S, R2E
 of the 6th P.M.
 Found R.R. Spike in Pavt.



LEGEND

- (X) STD. BASEMENT
- (V.O.) VIEW-OUT BASEMENT
- STORM WATER FLOW
- 158.0 SPOT ELEVATION
- 56.0 MATCH EXISTING ELEVATION
- V.O. VIEW-OUT
- T.F. TOP OF FOUNDATION
- B.F. BASEMENT FLOOR

MINIMUM PAD ELEVATIONS (LOWEST OPENING) AS FOLLOWS:

LOTS 4 THROUGH 14 BLOCK 1
 ELEV = 175.60 CITY DATUM
 ELEV = 1363.0 N.G.V.D.

VO OR WO WAS CONSIDERED ACCEPTABLE
 IF THE TOP OF FOUNDATION WAS 5' OR
 LESS ABOVE THE STREET RIGHT-OF-WAY ELEVATION.

S.E. Corner, S.W. 1/4
 Sec. 10, T27S, R2E
 of the 6th P.M.
 Found Lead Plug

N.E. Corner, S.W. 1/4
 Sec. 10, T27S, R2E
 of the 6th P.M.
 Found 3/4" I.P. in
 center of Split Stone

Saved: 05-02-2008 10:21:12 AM by: JMB
 Plot Scale: 1:100 05-08-2008 7:45:54 AM by: JOSHUA M. BENDER
 CA: 2002.02590.LDD 02590.dwg 102590-4corner-REVISED

REVISED MAY 2, 2008
 REVISED SEPTEMBER 18, 2007