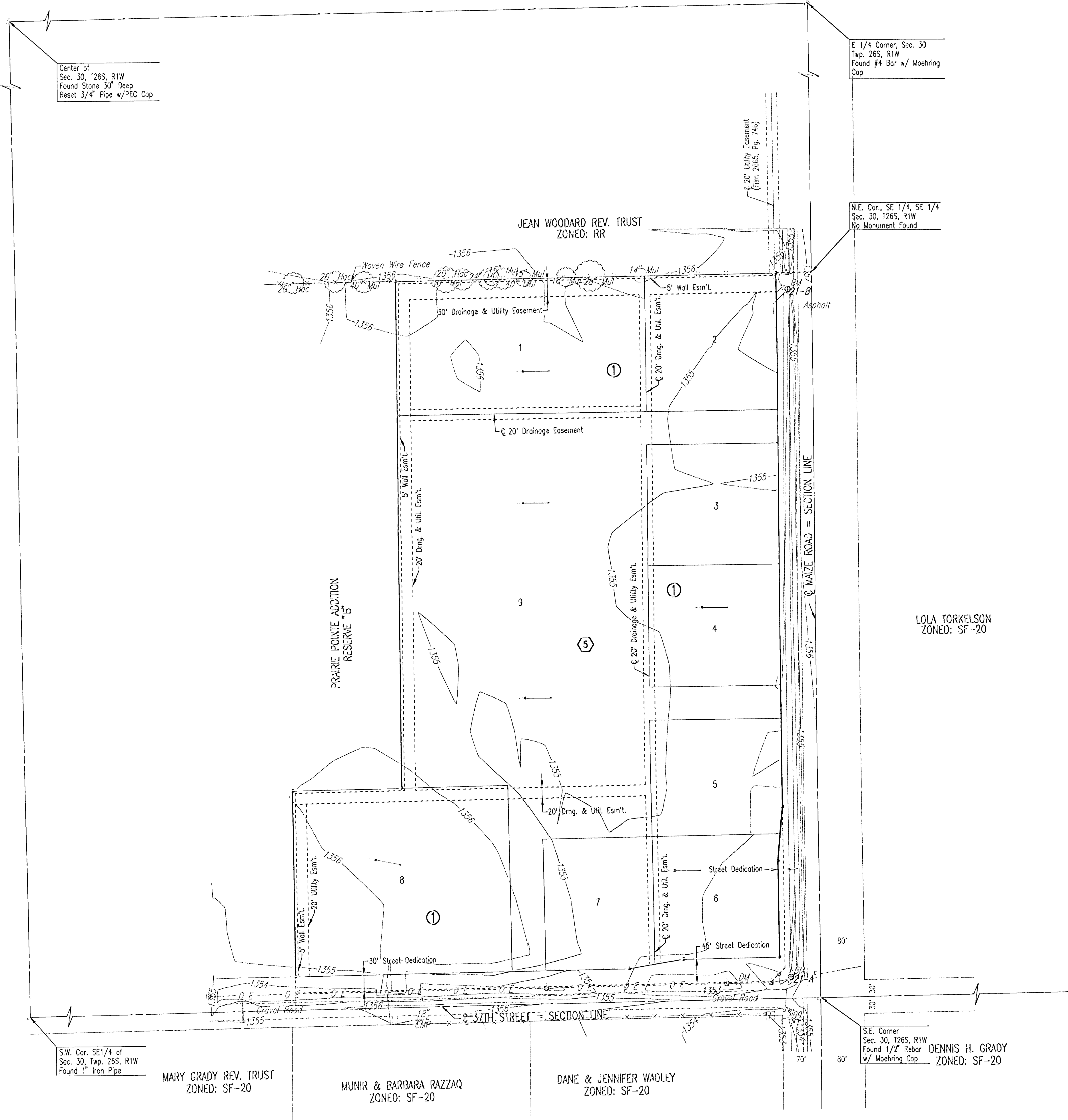


DRAINAGE PLAN FOR
HAMPTON SQUARE
AN ADDITION TO WICHITA, SEDGWICK COUNTY, KANSAS



E 1/4 Corner, Sec. 30
Twp. 26S, R1W
Found #4 Bar w/ Moehring
Cop

N.E. Cor., SE 1/4, SE 1/4
Sec. 30, 126S, R1W
No Monument Found

LOLA TORKELSON
ZONED: SF-20

S.E. Corner
Sec. 30, 126S, R1W
Found 1/2" Rebar
w/ Moehring Cop
DENNIS H. GRADY
ZONED: SF-20

Center of
Sec. 30, 126S, R1W
Found Stone 30" Deep
Reset 3/4" Pipe w/PEC Cop

S.W. Cor. SE 1/4 of
Sec. 30, Twp. 26S, R1W
Found 1" Iron Pipe

MARY GRADY REV. TRUST
ZONED: SF-20

MUNIR & BARBARA RAZZAQ
ZONED: SF-20

DANE & JENNIFER WADLEY
ZONED: SF-20

SCALE: 1"=100'

- BENCHMARKS:**
- B.M. 21 1" POST 72" W. OF CLN. MAIZE ROAD 1' N. OF LINE OF FENCE TO W. AT THE E. END OF A FENCE.
ELEV.= 1356.79 N.G.V.D.
ELEV.= 169.39 CITY OF WICHITA DATUM
 - B.M. 21-B CHISELED 1" S. END 30"x19" RCP ON THE E. PIPE OF DOUBLE PIPE 1230" N. AND 58" W. OF 37TH AND MAIZE ROAD.
ELEV.= 1355.34 N.G.V.D.
ELEV.= 167.94 CITY OF WICHITA DATUM
 - B.M. 21-A CHISELED 1" S. END 30"x19" RCP ON THE W. PIPE OF TRIPLE PIPE AT THE NW CORNER OF 37TH AND MAIZE RD.
ELEV.= 1354.18 N.G.V.D.
ELEV.= 166.78 CITY OF WICHITA DATUM

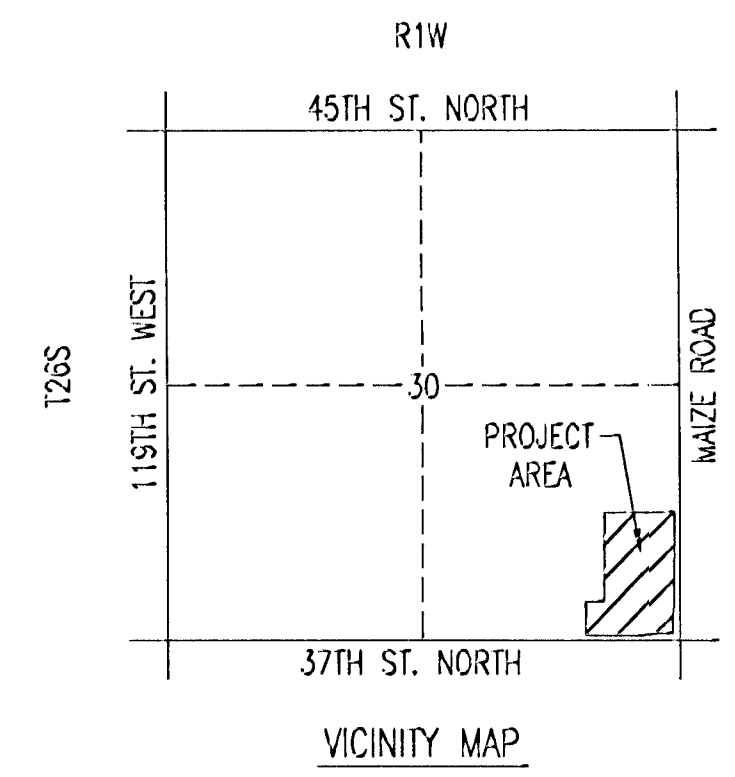
- LEGEND**
- (5) BASIN IDENTIFIER
 - STORM WATER FLOW

SEE THE PRAIRIE POINTE DRAINAGE PLAN AND SUPPORTING CALCULATIONS FOR HYDROLOGIC CALCULATIONS FOR HAMPTON SQUARE. HAMPTON SQUARE IS REFERRED TO AS FUTURE COMMERCIAL DEVELOPMENT OR DEVELOPED BASIN 5 IN THE PRAIRIE POINTE DRAINAGE REPORT.

SITE SHALL BE GRADED TO DRAIN TO PRAIRIE POINTE RESERVE B VIA APPROVED DRAINAGE CONVEYANCE METHODS.

MINIMUM PAD ELEVATIONS (LOWEST OPENING) SHALL BE AS FOLLOWS:

BLOCK 1	CITY DATUM	N.G.V.D.
LOTS 1,8, and 9	173.1	1360.5
LOTS 2 through 7	171.6	1359.0



DSNR: OPER: JIS SCALE: 1=100.00
 G:\2003\03254\aw\Drainage 06-30-2003 09:36:23 am