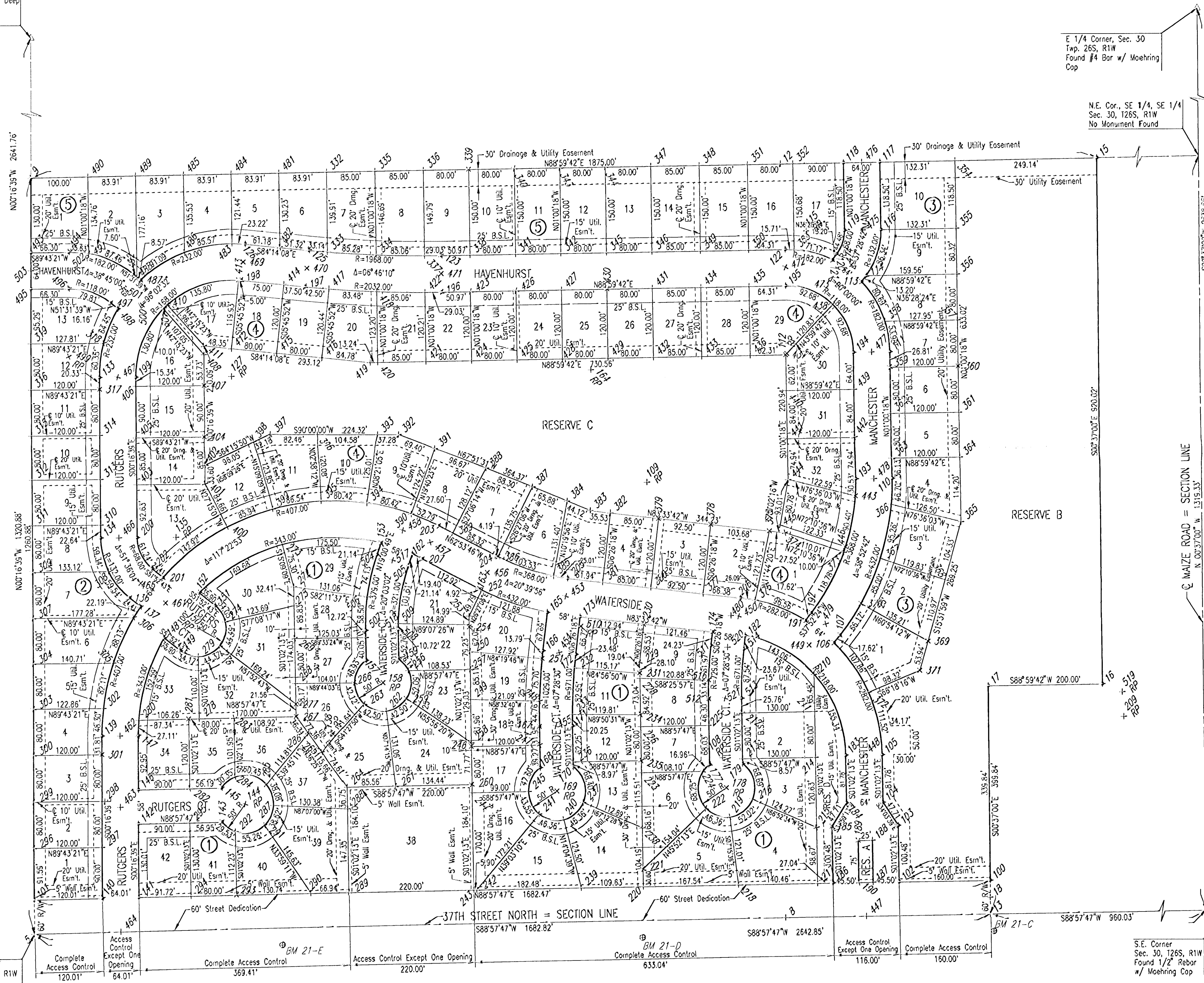


FILE COPY
PRAIRIE POINTE
 AN ADDITION TO WICHITA, SEDGWICK COUNTY, KANSAS
 BUBBLE MAP

Center of
 Sec. 30, T26S, R1W
 Found Stone 30" Deep
 Reset 3/4" Pipe
 w/PEC Cop

E 1/4 Corner, Sec. 30
 Twp. 26S, R1W
 Found #4 Bar w/ Moehring
 Cop

N.E. Cor., SE 1/4, SE 1/4
 Sec. 30, T26S, R1W
 No Monument Found



SCALE: 1" = 100'
 * = 1/2" REBAR WITH PEC CAP UNLESS OTHERWISE NOTED

- BENCHMARKS:
- BM 21-A CHISELED SQUARE ON NORTH END 30"x19" RCP ON WEST SIDE OF TRIPLE PIPE AT THE NORTHWEST CORNER OF 37TH ST. NORTH AND MAIZE ROAD. ELEV. = 1354.18 N.G.V.D. (166.78 CITY DATUM)
 - BM 21-C STEP NAILS ON NORTH FACE OF CORNER POST ON SOUTH SIDE OF 37TH ST. NORTH 950'± WEST OF 37TH ST. NORTH AND MAIZE ROAD. ELEV. = 1356.24 N.G.V.D. (168.84 CITY DATUM)
 - BM 21-D CHISELED SQUARE ON CONCRETE BASE OF BRICK FENCE POST ON SOUTH SIDE OF 37TH ST. NORTH 1070'± EAST OF 1/2 MILE LINE. ELEV. = 1355.56 N.G.V.D. (168.16 CITY DATUM)
 - BM 21-E CHISELED SQUARE ON CONCRETE BASE OF BRICK FENCE POST ON SOUTH SIDE OF 37TH ST. NORTH 440'± EAST OF 1/2 MILE LINE. ELEV. = 1357.01 N.G.V.D. (169.61 CITY DATUM)

S.W. Cor. SE 1/4 of
 Sec. 30, Twp. 26S, R1W
 Found 1" Iron Pipe

S.E. Corner
 Sec. 30, T26S, R1W
 Found 1/2" Rebar
 w/ Moehring Cop

DSNR: OPER: JJS SCALE: 1"=100.00
 Q:\2002\02726\LD\02726\GWS\BUBBLE MAP 04-14-2004 10:13:27 am