

DRAINAGE PLAN PRAIRIE POINTE

AN ADDITION TO WICHITA, SEDGWICK COUNTY, KANSAS

Center of
Sec. 30, 126S, R1W
Found Stone 30" Deep
Reset 3/4" Pipe
w/PEC Cap

BENCHMARKS:

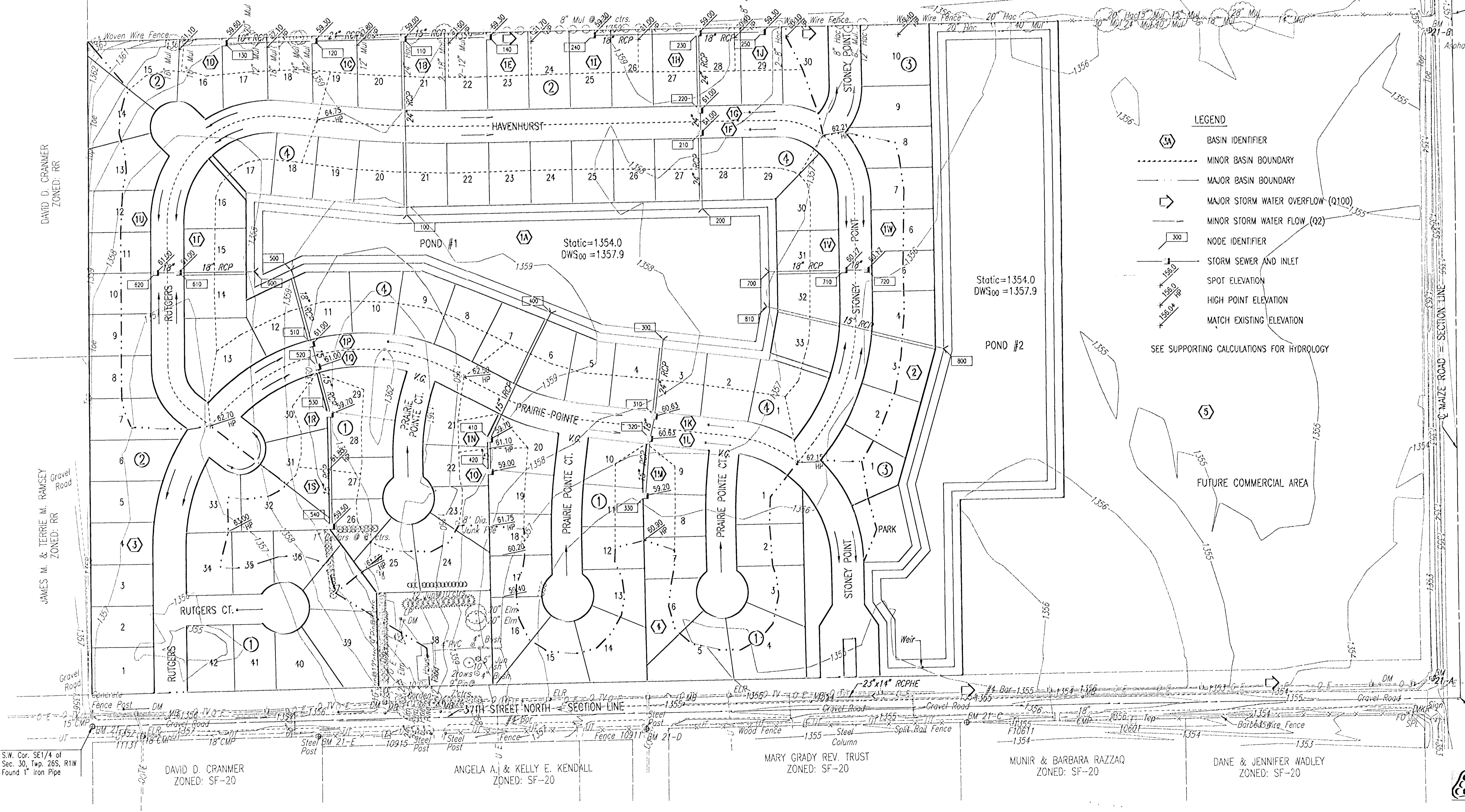
BM 21-A	CHISELED SQUARE ON NORTH END 30"x19" RCP ON WEST SIDE OF TRIPLE PIPE AT THE NORTHWEST CORNER OF 37TH ST. NORTH AND MAIZE ROAD. ELEV. = 1354.18 N.G.V.D. (166.78 CITY DATUM)
BM 21-C	STEP NAILS ON NORTH FACE OF CORNER POST ON SOUTH SIDE OF 37TH ST. NORTH 950'± WEST OF 37TH ST. NORTH AND MAIZE ROAD. ELEV. = 1356.24 N.G.V.D. (168.84 CITY DATUM)
BM 21-D	CHISELED SQUARE ON CONCRETE BASE OF BRICK FENCE POST ON SOUTH SIDE OF 37TH ST. NORTH 1070'± EAST OF 1/2 MILE LINE. ELEV. = 1355.56 N.G.V.D. (168.16 CITY DATUM)
BM 21-E	CHISELED SQUARE ON CONCRETE BASE OF BRICK FENCE POST ON SOUTH SIDE OF 37TH ST. NORTH 440'± EAST OF 1/2 MILE LINE. ELEV. = 1357.01 N.G.V.D. (169.61 CITY DATUM)
BM 21-F	1" PIPE AT C OF 37TH ST. NORTH = 1/4 CORNER 1/2 MILE WEST OF 37TH ST. NORTH AND MAIZE ROAD. ELEV. = 1357.24 N.G.V.D. (169.84 CITY DATUM)

MINIMUM OPENINGS

BLOCK	LOTS	ELEVATION (N.G.V.D.)	CITY DATUM	
BLOCK 1	LOTS 4-6, 13-16, 40-42	1359.0	171.6	
	LOT 39	1360.0	172.6	
	LOTS 1-3, 7, 17, 24	1360.5	173.1	
	LOTS 8-12, 18-23	1361.9	174.5	
	LOT 25	1361.6	174.2	
	LOTS 28-30	1362.3	174.9	
	LOTS 26-27, 31-37	1362.6	175.2	
	BLOCK 2	LOTS 1-6	1359.0	171.6
		LOTS 7-10	1360.0	172.6
		LOTS 11-12	1361.0	173.6
LOTS 27-30		1361.6	174.2	
LOTS 13-14, 24-26		1362.0	174.6	
LOTS 20-23		1362.7	175.3	
LOTS 15-19		1363.8	176.4	
BLOCK 3		LOTS 1-10	1360.5	173.1
		BLOCK 4	LOTS 1-33	1360.5

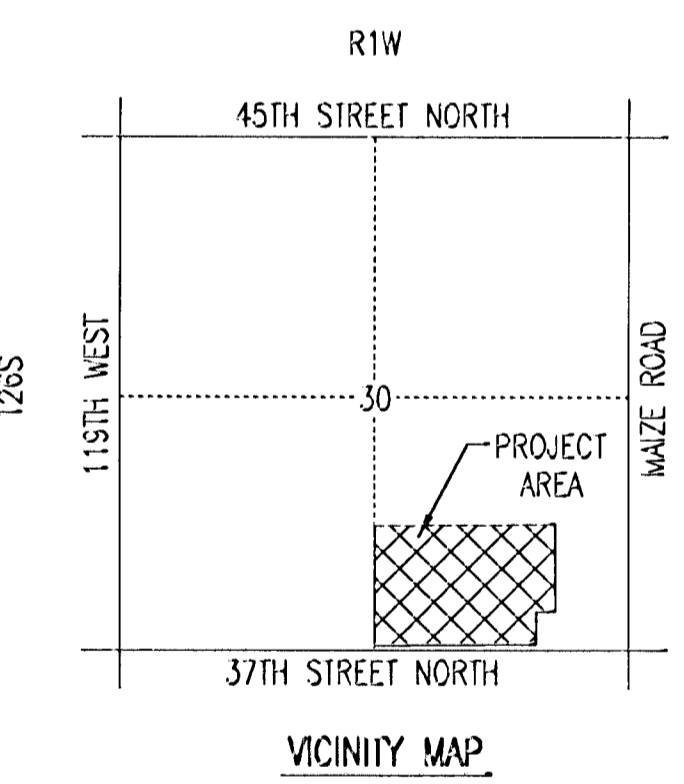
E 1/4 Corner, Sec. 30
Twp. 26S, R1W
Found #4 Bar w/ Moehring
Cap

N.E. Cor. SE 1/4, SE 1/4
Sec. 30, 126S, R1W
No Monument Found



- LEGEND**
- (IA) BASIN IDENTIFIER
 - MINOR BASIN BOUNDARY
 - MAJOR BASIN BOUNDARY
 - MAJOR STORM WATER OVERFLOW (Q100)
 - MINOR STORM WATER FLOW (Q2)
 - 300 NODE IDENTIFIER
 - STORM SEWER AND INLET
 - SPOT ELEVATION
 - HIGH POINT ELEVATION
 - MATCH EXISTING ELEVATION
- SEE SUPPORTING CALCULATIONS FOR HYDROLOGY

SCALE: 1" = 100'



S.E. Corner
Sec. 30, 126S, R1W
Found 1/2" Rebar
w/ Moehring Cap

OPER: JTS SCALE: 1"=100'00'
 DATE: 02/27/2003 10:29:05 am
 PROJECT: DRAINAGE 04-28-2003