

DRAINAGE PLAN
PRAIRIE POINTE
 AN ADDITION TO WICHITA, SEDGWICK COUNTY, KANSAS

Center of
 Sec. 30, T26S, R1W
 Found Stone 30" Deep
 Reset 3/4" Pipe
 w/PEC Cap

BENCHMARKS:

BM 21-A CHISELED SQUARE ON NORTH END 30"x19" RCP ON WEST SIDE OF TRIPLE PIPE AT THE NORTHWEST CORNER OF 37TH ST. NORTH AND MAIZE ROAD.
 ELEV. = 1354.18 N.G.V.D.
 (166.78 CITY DATUM)

BM 21-C STEP NAILS ON NORTH FACE OF CORNER POST ON SOUTH SIDE OF 37TH ST. NORTH 950'± WEST OF 37TH ST. NORTH AND MAIZE ROAD.
 ELEV. = 1356.24 N.G.V.D.
 (168.84 CITY DATUM)

BM 21-D CHISELED SQUARE ON CONCRETE BASE OF BRICK FENCE POST ON SOUTH SIDE OF 37TH ST. NORTH 1070'± EAST OF 1/2 MILE LINE.
 ELEV. = 1355.56 N.G.V.D.
 (168.16 CITY DATUM)

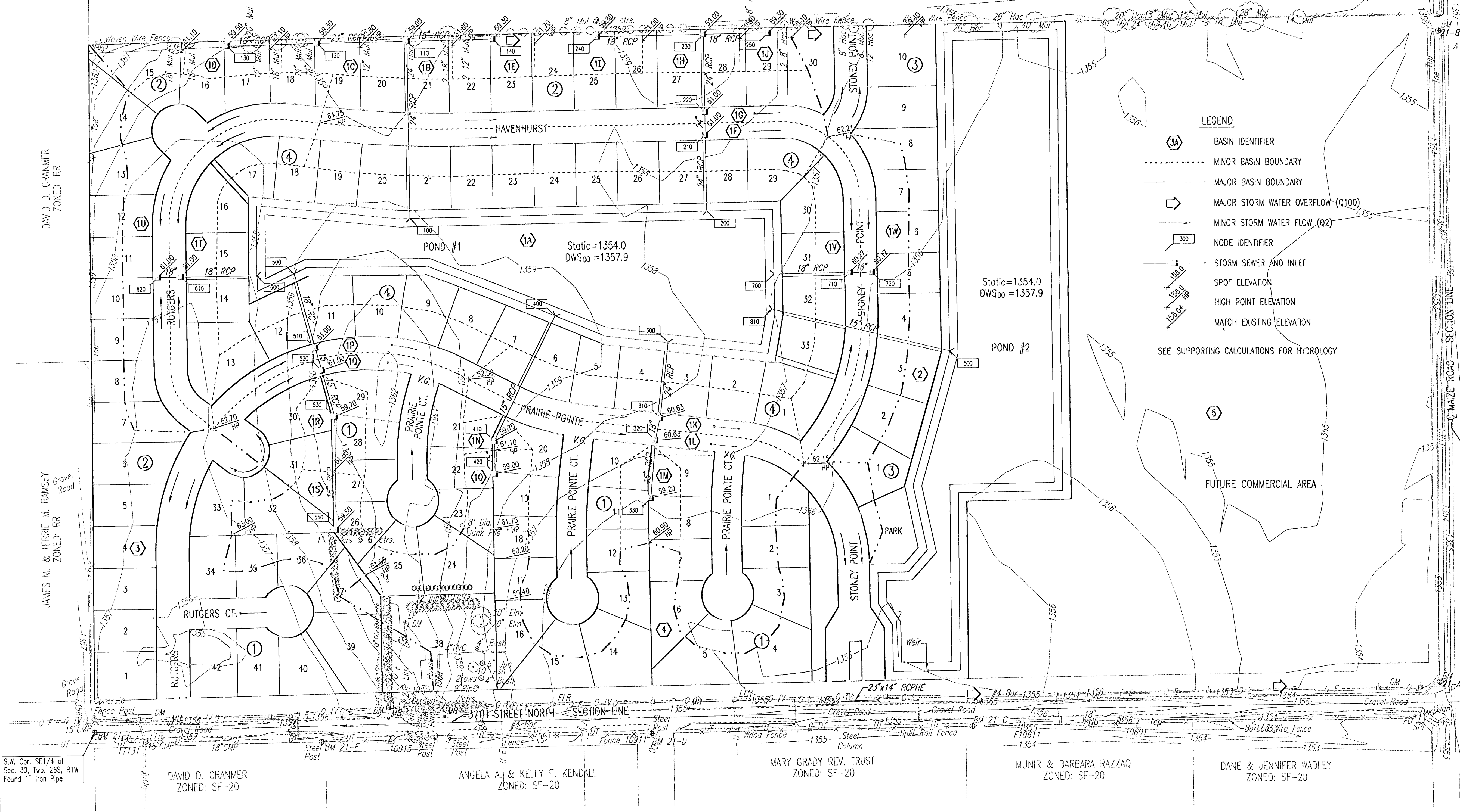
BM 21-E CHISELED SQUARE ON CONCRETE BASE OF BRICK FENCE POST ON SOUTH SIDE OF 37TH ST. NORTH 440'± EAST OF 1/2 MILE LINE.
 ELEV. = 1357.01 N.G.V.D.
 (169.61 CITY DATUM)

BM 21-F 1" PIPE AT @ OF 37TH ST. NORTH = 1/4 CORNER 1/2 MILE WEST OF 37TH ST. NORTH AND MAIZE ROAD.
 ELEV. = 1357.24 N.G.V.D.
 (169.84 CITY DATUM)

MINIMUM OPENINGS	ELEVATION (N.G.V.D.)	CITY DATUM
BLOCK 1		
LOTS 4-6, 13-16, 40-42	1359.0	171.6
LOT 39	1360.0	172.6
LOTS 1-3, 7, 17, 24	1360.5	173.1
LOTS 8-12, 18-23	1361.9	174.5
LOT 25	1361.6	174.2
LOTS 28-30	1362.3	174.9
LOTS 26-27, 31-37	1362.6	175.2
BLOCK 2		
LOTS 1-6	1359.0	171.6
LOTS 7-10	1360.0	172.6
LOTS 11-12	1361.0	173.6
LOTS 27-30	1361.6	174.2
LOTS 13-14, 24-26	1362.0	174.6
LOTS 20-23	1362.7	175.3
LOTS 15-19	1363.8	176.4
BLOCK 3		
LOTS 1-10	1360.5	173.1
BLOCK 4		
LOTS 1-33	1360.5	173.1

E 1/4 Corner, Sec. 30
 Twp. 26S, R1W
 Found #4 Bar w/ Moehring
 Cap

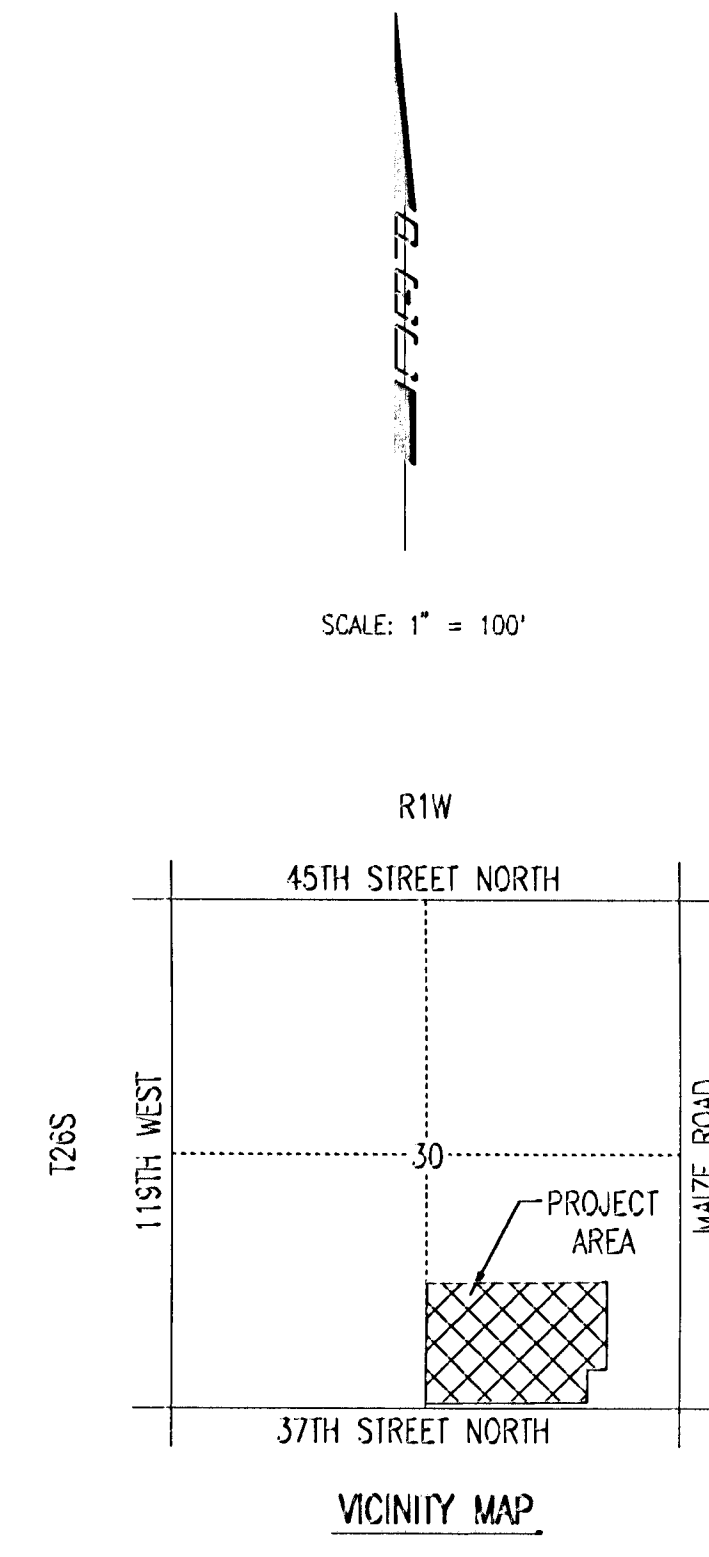
N.E. Cor., SE 1/4, SE 1/4
 Sec. 30, T26S, R1W
 No Monument Found



LEGEND

- (3A) BASIN IDENTIFIER
- MINOR BASIN BOUNDARY
- MAJOR BASIN BOUNDARY
- ➔ MAJOR STORM WATER OVERFLOW (Q100)
- ➔ MINOR STORM WATER FLOW (Q2)
- 300 NODE IDENTIFIER
- STORM SEWER AND INLET
- SPOT ELEVATION
- HIGH POINT ELEVATION
- MATCH EXISTING ELEVATION

SEE SUPPORTING CALCULATIONS FOR HYDROLOGY



DATE: 02/26/03 10:28:05 am

S.W. Cor. SE1/4 of
 Sec. 30, Twp. 26S, R1W
 Found 1" Iron Pipe

S.E. Corner
 Sec. 30, T26S, R1W
 Found 1/2" Rebar
 w/ Moehring Cap

Professional Engineering Consultants, P.A.
 303 S. TOPEKA • WICHITA, KANSAS 67202
 316-262-2671 • FAX 316-262-3003

DAVID D. CRANMER
 ZONED: SF-20

ANGELA A. & KELLY E. KENDALL
 ZONED: SF-20

MARY GRADY REV. TRUST
 ZONED: SF-20

MUNIR & BARBARA RAZZAQ
 ZONED: SF-20

DANE & JENNIFER WADLEY
 ZONED: SF-20