

DRAINAGE PLAN
KRUG NORTH
2ND ADDITION
TO
WICHITA, SEDGWICK COUNTY, KANSAS

Prepared By

 **BAUGHMAN COMPANY, P.A.**
ENGINEERING, SURVEYING & PLANNING
316/262-7271 FAX 316/262-0149 WICHITA, KANSAS 67211

May 23, 2005

INTRODUCTION

This report provides information and documentation to support the "Drainage Plan" for the proposed "Falcon Falls 2nd Addition" plat, located in the East Half of Section 22, T-26-S, R-1-E in Sedgwick County, Kansas.

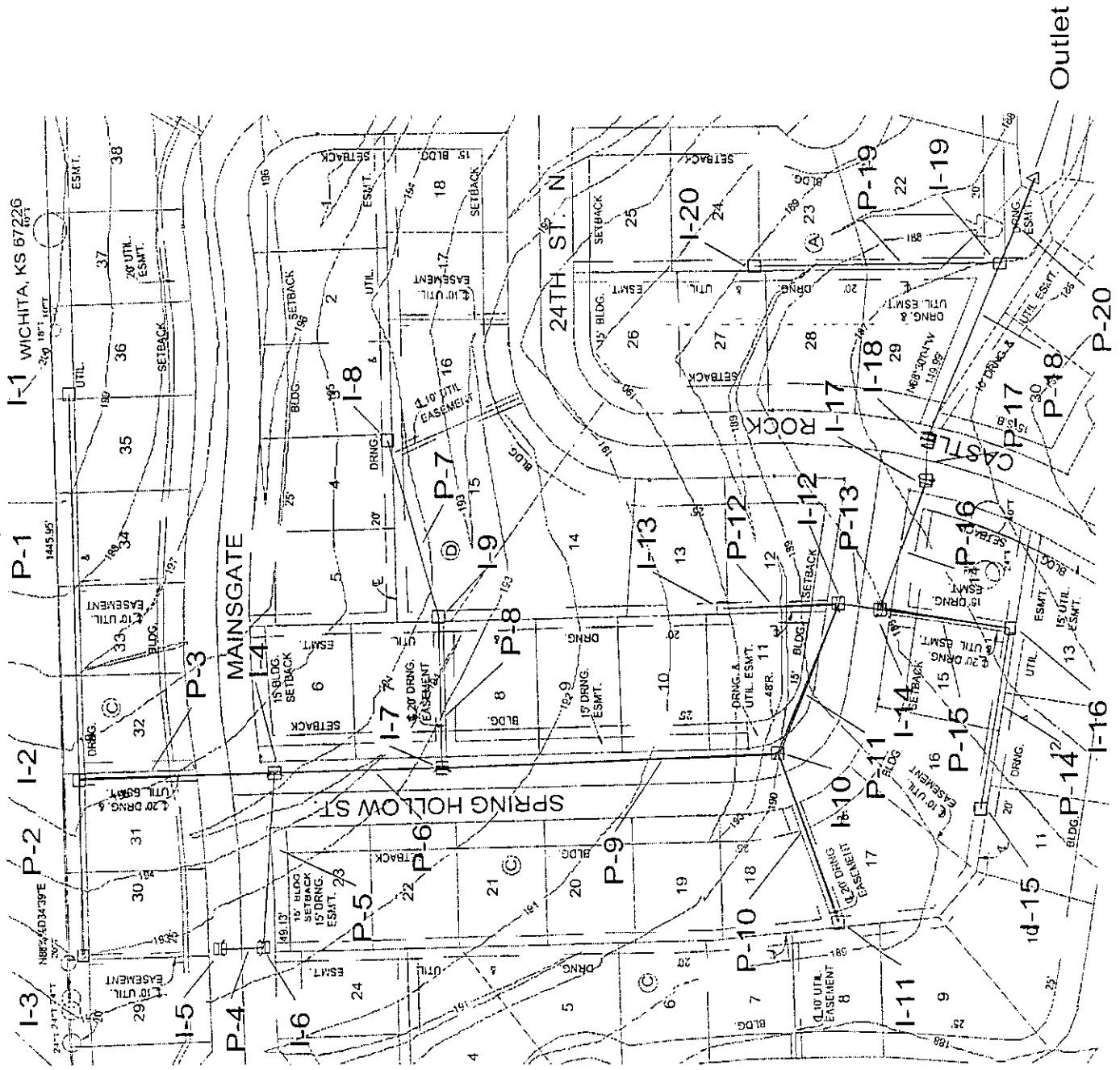
The "Drainage Plan" being submitted herein is intended to serve as a guide for the design of streets, stormwater sewer systems, and detention facilities for the proposed development. Modifications may be made as necessary during the final design in order to obtain a more economical and constructable design.

DETENTION ROUTING

As part of the overall drainage design for the development, detention ponds were modeled in the original submittal of Krug North Addition.

STORMWATER SEWER SYSTEMS

The stormwater sewer systems within the proposed development have been designed to convey the 2-yr return period (10% exceedance) event, as required by the City of Wichita's Stormwater Management Criteria. The subdivision-grading plan provides for protection of the primary structures during the 100-yr return period (1% exceedance) event. Only the major stormwater sewer was modeled for this submittal. Other systems within the development follow the original intent of the Krug North Addition "Drainage Plan" and therefore sizing remained similar.



Outlet

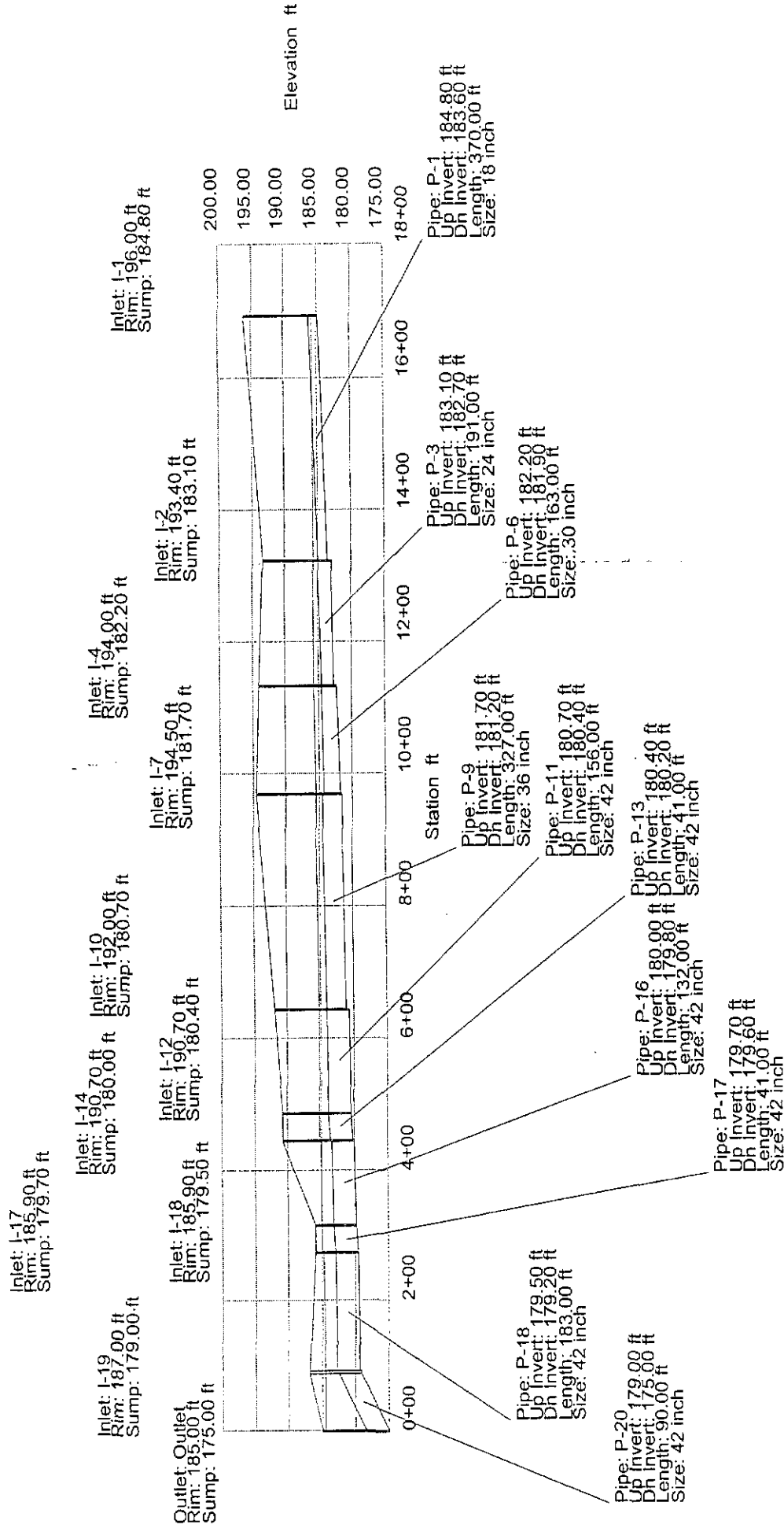
WICHITA, KS 67226

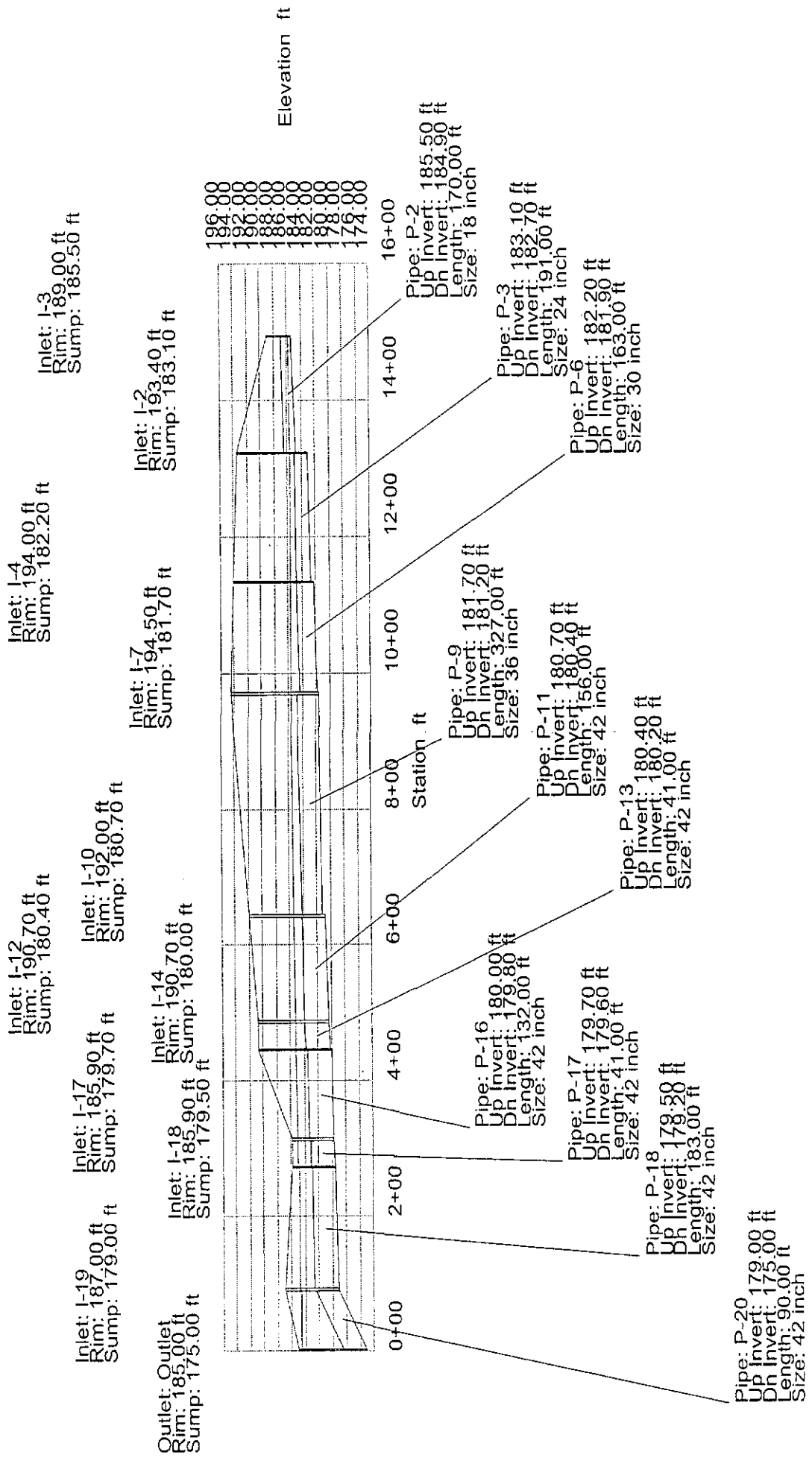
System Report

Pipe	Additional Flow (cfs)	Total Upstream Added (cfs)	Structure Discharge (cfs)	-Node- Upstream Downstream	-Section- Shape Size	Upstream Invert Elevation (ft)	Downstream Invert Elevation (ft)	-Ground- Upstream Downstream (ft)	-HGL- Upstream Downstream (ft)	-Slope- Energy Constructed (ft/ft)	-Section- Discharge Capacity (cfs)	Length (ft)	Average Velocity (ft/s)	Description
P-19	2.50	0.00	2.50	I-20	Circular	181.80	181.00	187.30	184.83	0.000566	2.50	240.00	1.41	
P-14	1.30	0.00	1.30	I-15	18 inch Circular	182.90	182.30	187.00	184.70	0.003333	6.06	177.00	0.74	
P-15	1.00	1.30	2.30	I-16	18 inch Circular	181.80	181.50	185.20	185.26	0.000153	1.30	127.00	0.73	
P-12	3.30	0.00	3.30	I-14	24 inch Circular	182.90	182.40	190.70	185.24	0.000103	2.30	114.00	2.69	
P-10	3.60	0.00	3.60	I-11	18 inch Circular	183.00	182.70	186.10	185.59	0.001175	3.60	174.00	2.04	
P-7	0.40	0.00	0.40	I-8	18 inch Circular	184.70	183.50	190.00	185.38	0.001724	4.36	176.00	0.29	
P-8	3.30	0.40	3.70	I-9	18 inch Circular	183.20	182.70	192.80	185.62	0.006818	8.67	146.00	1.18	
P-4	3.40	0.00	3.40	I-5	24 inch Circular	184.00	183.50	192.30	185.61	0.000268	3.70	41.00	1.92	
P-5	1.50	3.40	4.90	I-6	18 inch Circular	183.10	182.70	192.30	185.79	0.003425	13.24	168.00	1.56	
P-2	0.80	0.00	0.80	I-3	24 inch Circular	185.50	184.90	194.00	185.69	0.000469	4.90	170.00	1.61	
P-1	1.00	0.00	1.00	I-1	18 inch Circular	184.80	183.60	193.40	185.73	0.003529	6.24	370.00	0.70	
P-3	1.00	1.80	2.80	I-2	18 inch Circular	183.10	182.70	193.40	185.76	0.000098	1.00	191.00	0.89	
P-6	2.10	7.70	9.80	I-4	24 inch Circular	182.20	181.90	194.00	185.72	0.000153	2.80	163.00	2.00	
P-9	1.00	13.50	14.50	I-7	30 inch Circular	181.70	181.20	194.50	185.57	0.002094	10.35	327.00	2.05	
P-11	0.40	18.10	19.20	I-10	36 inch Circular	180.70	180.40	192.00	185.54	0.000571	9.80	156.00	2.00	
P-13	2.30	22.50	22.90	I-12	42 inch Circular	180.40	180.20	190.70	185.29	0.000364	19.20	41.00	2.38	
P-16	2.30	25.20	27.50	I-14	42 inch Circular	180.00	179.80	190.70	185.25	0.000518	22.90	132.00	2.86	
P-17	2.30	27.50	29.80	I-17	42 inch Circular	179.70	179.60	185.90	185.17	0.000747	27.50	41.00	3.10	
P-18	1.50	29.80	31.30	I-18	42 inch Circular	179.50	179.20	185.90	184.96	0.000877	29.80	183.00	3.25	
				I-19	42 inch Circular		187.00	187.00	184.87	0.002439	49.68			
									184.70	0.000968	31.30			
										0.001639	40.73			

System Report

Pipe	Additional Flow (cfs)	Total Upstream Added (cfs)	Structure Discharge (cfs)	-Node- Upstream Downstream	-Section- Shape Size	Upstream Invert Elevation (ft)	Downstream Invert Elevation (ft)	-Ground- Upstream Downstream (ft)	-HGL- Upstream Downstream (ft)	-Slope- Energy Constructed (ft/ft)	-Section- Discharge Capacity (cfs)	Length (ft)	Average Velocity (ft/s)	Description
P-20	0.00	33.80	33.80	I-19 Outlet	Circular 42 Inch	179.00	175.00	187.00 185.00	184.60 184.50	0.001129 0.044444	33.80 212.09	90.00	3.51	





Inlet: I-3
Rim: 189.00 ft
Sump: 185.50 ft

Inlet: I-4
Rim: 194.00 ft
Sump: 182.20 ft

Inlet: I-2
Rim: 193.40 ft
Sump: 183.10 ft

Inlet: I-7
Rim: 194.50 ft
Sump: 181.70 ft

Inlet: I-10
Rim: 192.00 ft
Sump: 180.70 ft

Inlet: I-12
Rim: 190.70 ft
Sump: 180.40 ft

Inlet: I-17
Rim: 185.90 ft
Sump: 179.70 ft

Inlet: I-14
Rim: 190.70 ft
Sump: 180.00 ft

Inlet: I-18
Rim: 185.90 ft
Sump: 179.50 ft

Outlet: Outlet
Rim: 185.00 ft
Sump: 175.00 ft

Pipe: P-2
Up Invert: 185.50 ft
Dn Invert: 184.90 ft
Length: 170.00 ft
Size: 18 inch

Pipe: P-3
Up Invert: 183.10 ft
Dn Invert: 182.70 ft
Length: 191.00 ft
Size: 24 inch

Pipe: P-6
Up Invert: 182.20 ft
Dn Invert: 181.90 ft
Length: 163.00 ft
Size: 30 inch

Pipe: P-9
Up Invert: 181.70 ft
Dn Invert: 181.20 ft
Length: 327.00 ft
Size: 36 inch

Pipe: P-11
Up Invert: 180.70 ft
Dn Invert: 180.40 ft
Length: 156.00 ft
Size: 42 inch

Pipe: P-13
Up Invert: 180.40 ft
Dn Invert: 180.20 ft
Length: 41.00 ft
Size: 42 inch

Pipe: P-16
Up Invert: 180.00 ft
Dn Invert: 179.80 ft
Length: 132.00 ft
Size: 42 inch

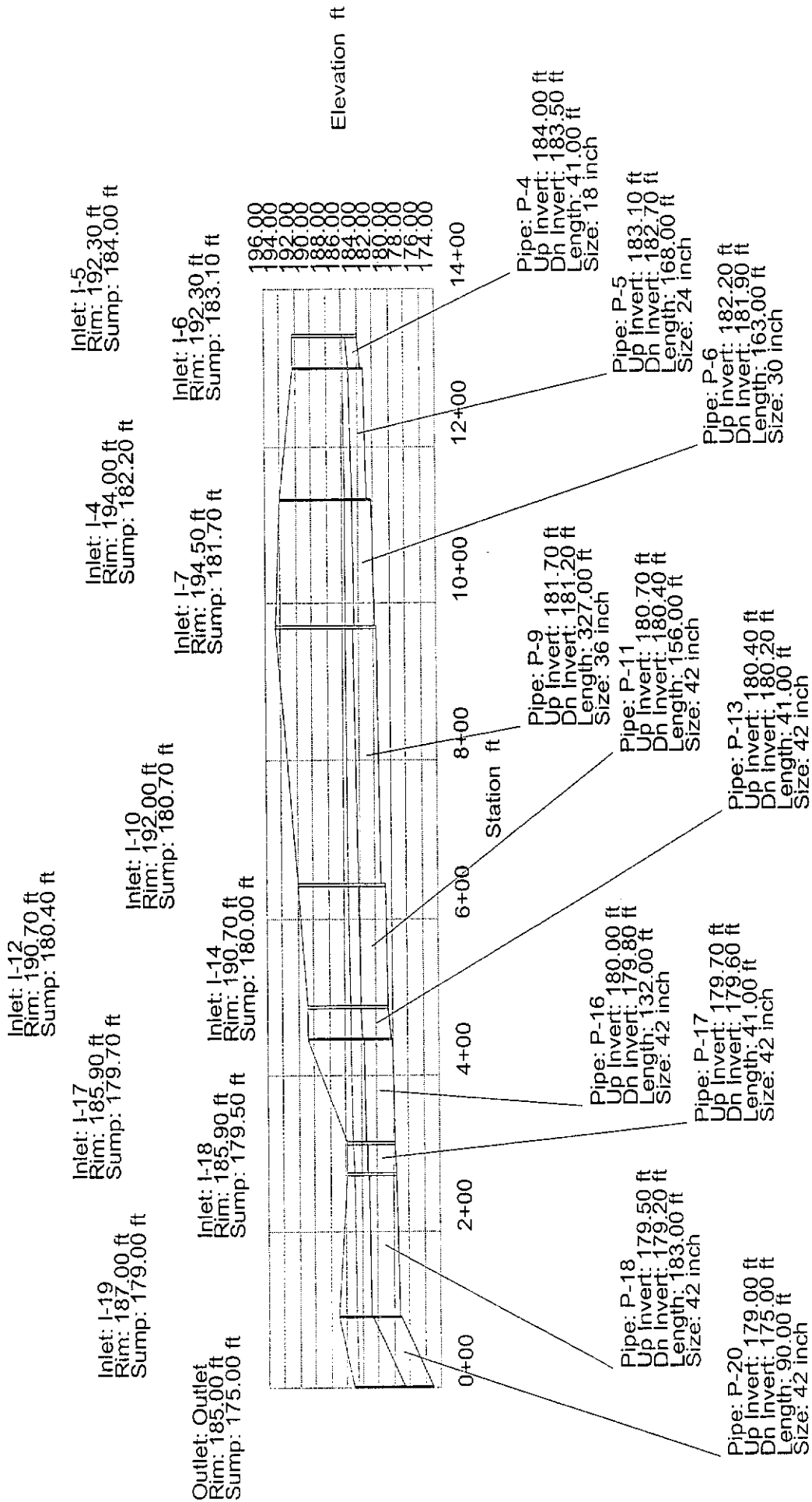
Pipe: P-17
Up Invert: 179.70 ft
Dn Invert: 179.60 ft
Length: 41.00 ft
Size: 42 inch

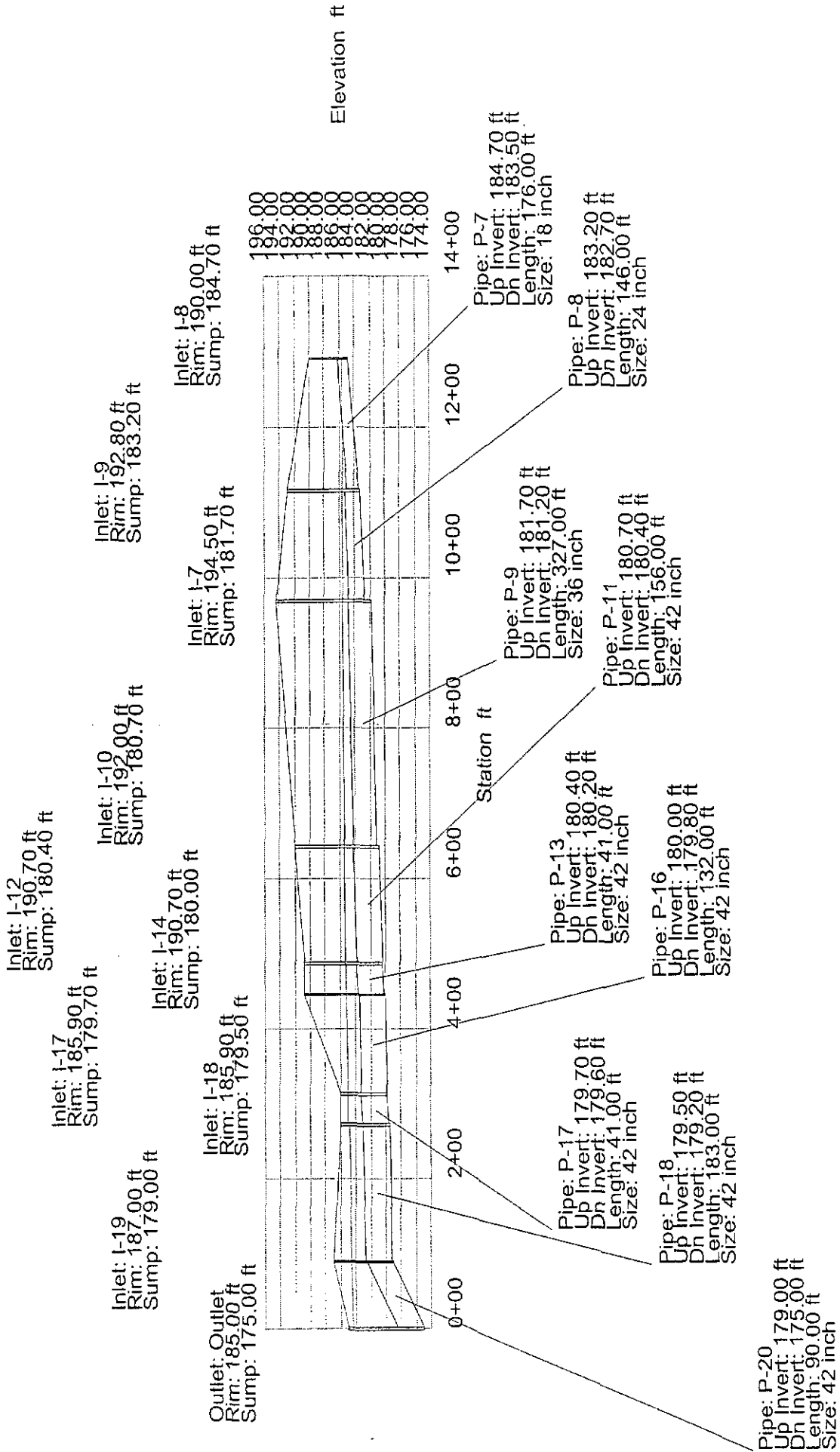
Pipe: P-18
Up Invert: 179.50 ft
Dn Invert: 178.20 ft
Length: 183.00 ft
Size: 42 inch

Pipe: P-20
Up Invert: 179.00 ft
Dn Invert: 175.00 ft
Length: 90.00 ft
Size: 42 inch

Elevation ft

Station .ft





Inlet: I-12
Rim: 190.70 ft
Sump: 180.40 ft

Inlet: I-17
Rim: 185.90 ft
Sump: 179.70 ft

Inlet: I-10
Rim: 192.00 ft
Sump: 180.70 ft

Inlet: I-19
Rim: 187.00 ft
Sump: 179.00 ft

Inlet: I-11
Rim: 186.10 ft
Sump: 183.00 ft

Inlet: I-14
Rim: 190.70 ft
Sump: 180.00 ft

Inlet: I-18
Rim: 185.90 ft
Sump: 179.50 ft

Outlet: Outlet
Rim: 185.00 ft
Sump: 175.00 ft

192.00
190.00
188.00
186.00
184.00
182.00
180.00
178.00
176.00
174.00

Elevation ft

0+00 1+00 2+00 3+00 4+00 5+00 6+00 7+00 8+00 9+00

Station ft

Pipe: P-10
Up Invert: 183.90 ft
Dn Invert: 182.70 ft
Length: 174.00 ft
Size: 18 inch

Pipe: P-11
Up Invert: 180.70 ft
Dn Invert: 156.00 ft
Length: 156.00 ft
Size: 42 inch

Pipe: P-13
Up Invert: 180.40 ft
Dn Invert: 41.00 ft
Length: 41.00 ft
Size: 42 inch

Pipe: P-17
Up Invert: 179.70 ft
Dn Invert: 41.00 ft
Length: 41.00 ft
Size: 42 inch

Pipe: P-16
Up Invert: 180.00 ft
Dn Invert: 179.80 ft
Length: 132.00 ft
Size: 42 inch

Pipe: P-18
Up Invert: 179.50 ft
Dn Invert: 179.20 ft
Length: 183.00 ft
Size: 42 inch

Pipe: P-20
Up Invert: 179.00 ft
Dn Invert: 175.00 ft
Length: 90.00 ft
Size: 42 inch

Inlet: I-12
 Rim: 190.70 ft
 Sump: 180.40 ft

Inlet: I-17
 Rim: 185.90 ft
 Sump: 179.70 ft

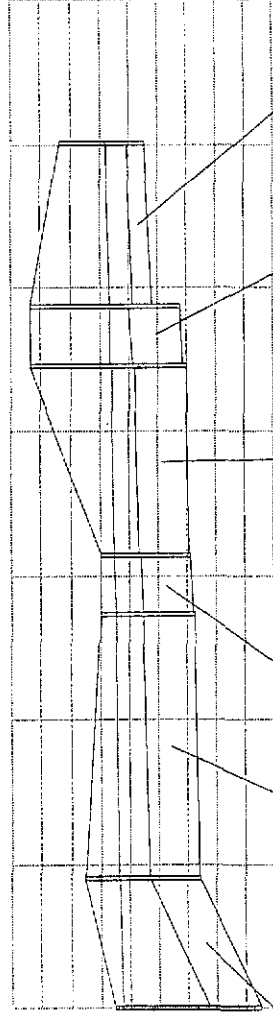
Inlet: I-13
 Rim: 188.80 ft
 Sump: 182.90 ft

Outlet: Outlet
 Rim: 185.00 ft
 Sump: 175.00 ft

Inlet: I-14
 Rim: 190.70 ft
 Sump: 180.00 ft

Inlet: I-18
 Rim: 185.90 ft
 Sump: 179.50 ft

192.00
 190.00
 188.00
 186.00
 184.00
 182.00
 180.00
 178.00
 176.00
 174.00



Elevation ft

0+00 1+00 2+00 3+00 4+00 5+00 6+00 7+00
 Station ft

Pipe: P-12
 Up Invert: 182.90 ft
 Dn Invert: 114.00 ft
 Length: 15 inch
 Size: 15 inch

Pipe: P-13
 Up Invert: 180.40 ft
 Dn Invert: 180.20 ft
 Length: 41.00 ft
 Size: 42 inch

Pipe: P-16
 Up Invert: 180.00 ft
 Dn Invert: 179.80 ft
 Length: 132.00 ft
 Size: 42 inch

Pipe: P-17
 Up Invert: 179.70 ft
 Dn Invert: 179.60 ft
 Length: 41.00 ft
 Size: 42 inch

Pipe: P-18
 Up Invert: 179.50 ft
 Dn Invert: 179.20 ft
 Length: 183.00 ft
 Size: 42 inch

Pipe: P-20
 Up Invert: 179.00 ft
 Dn Invert: 175.00 ft
 Length: 90.00 ft
 Size: 42 inch

Inlet: I-17
 Rim: 185.90 ft
 Sump: 179.70 ft

Inlet: I-16
 Rim: 185.20 ft
 Sump: 181.80 ft

Inlet: I-19
 Rim: 187.00 ft
 Sump: 179.00 ft

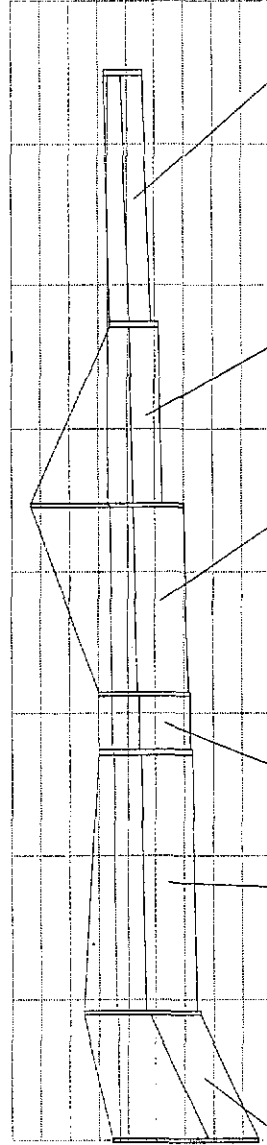
Inlet: I-14
 Rim: 190.70 ft
 Sump: 180.00 ft

Inlet: I-15
 Rim: 185.50 ft
 Sump: 182.90 ft

Inlet: I-18
 Rim: 185.90 ft
 Sump: 179.50 ft

Outlet: Outlet
 Rim: 185.00 ft
 Sump: 175.00 ft

192.00
 190.00
 188.00
 186.00
 184.00
 182.00
 178.00
 174.00



Elevation ft

0+00 1+00 2+00 3+00 4+00 5+00 6+00 7+00 8+00

Station ft

Pipe: P-17
 Up Invert: 179.70 ft
 Dn Invert: 179.60 ft
 Length: 41.00 ft
 Size: 42 inch

Pipe: P-18
 Up Invert: 179.50 ft
 Dn Invert: 179.20 ft
 Length: 183.00 ft
 Size: 42 inch

Pipe: P-20
 Up Invert: 179.00 ft
 Dn Invert: 175.00 ft
 Length: 90.00 ft
 Size: 42 inch

Pipe: P-14
 Up Invert: 182.90 ft
 Dn Invert: 182.30 ft
 Length: 177.00 ft
 Size: 18 inch

Pipe: P-15
 Up Invert: 181.80 ft
 Dn Invert: 181.50 ft
 Length: 127.00 ft
 Size: 24 inch

Pipe: P-16
 Up Invert: 189.00 ft
 Dn Invert: 179.80 ft
 Length: 132.00 ft
 Size: 42 inch

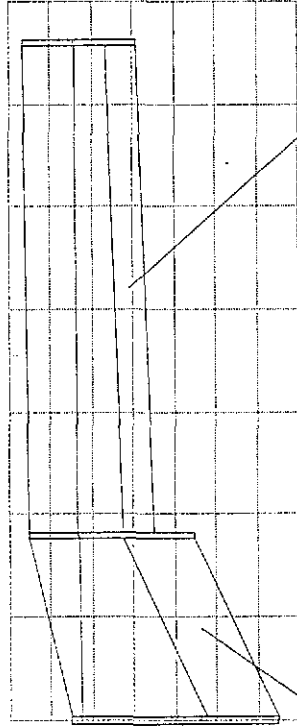
Inlet: I-19
 Rim: 187.00 ft
 Sump: 179.00 ft

Inlet: I-20
 Rim: 187.30 ft
 Sump: 181.80 ft

Outlet: Outlet
 Rim: 185.00 ft
 Sump: 175.00 ft

188.00
 86.00
 84.00
 82.00
 80.00
 78.00
 76.00
 74.00

Elevation ft



0+00+50+00+50+00+50+00+50

Station ft

Pipe: P-19
 Up Invert: 181.80 ft
 Dn Invert: 181.00 ft
 Length: 240.00 ft
 Size: 18 inch

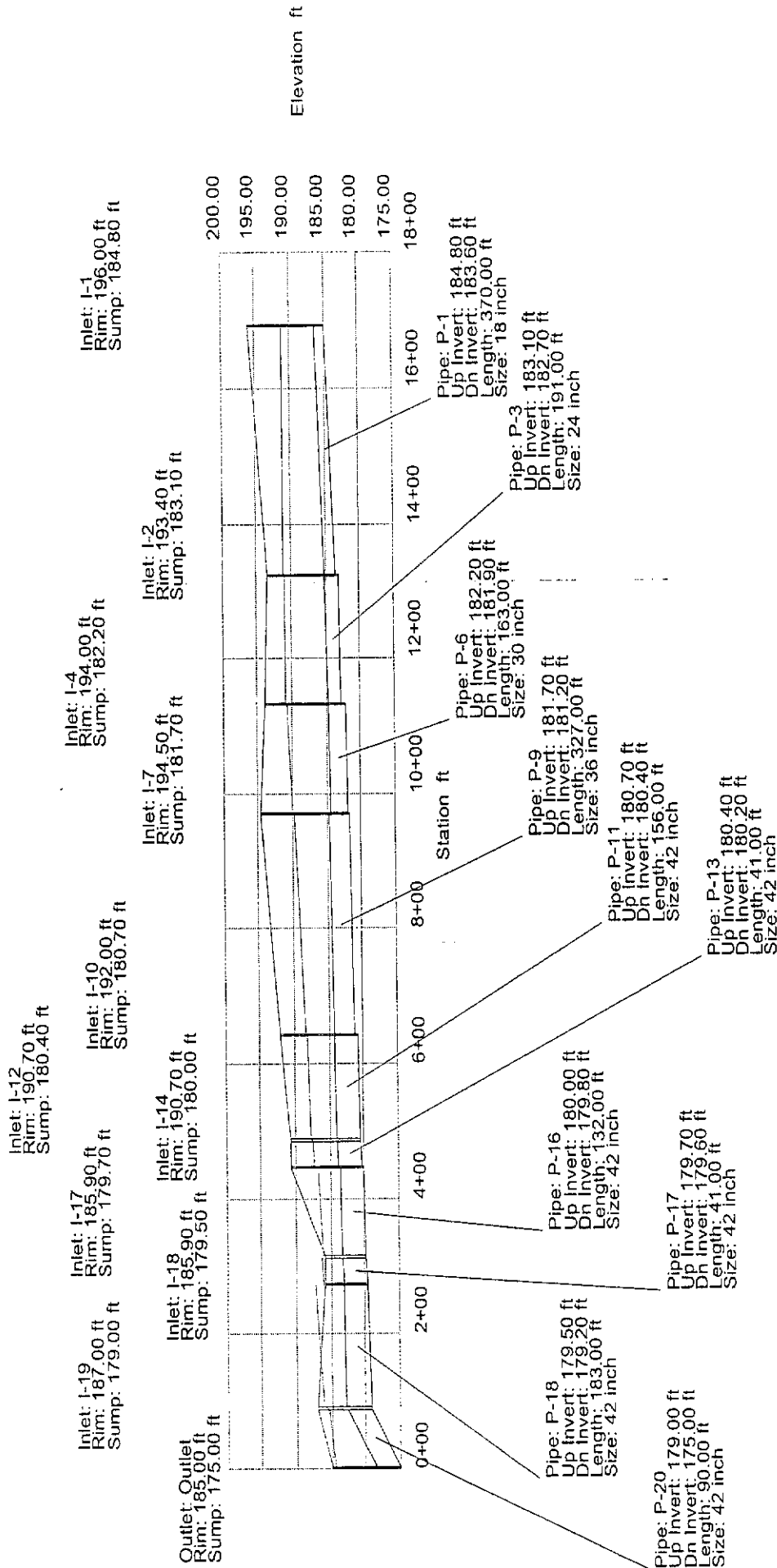
Pipe: P-20
 Up Invert: 179.00 ft
 Dn Invert: 175.00 ft
 Length: 90.00 ft
 Size: 42 inch

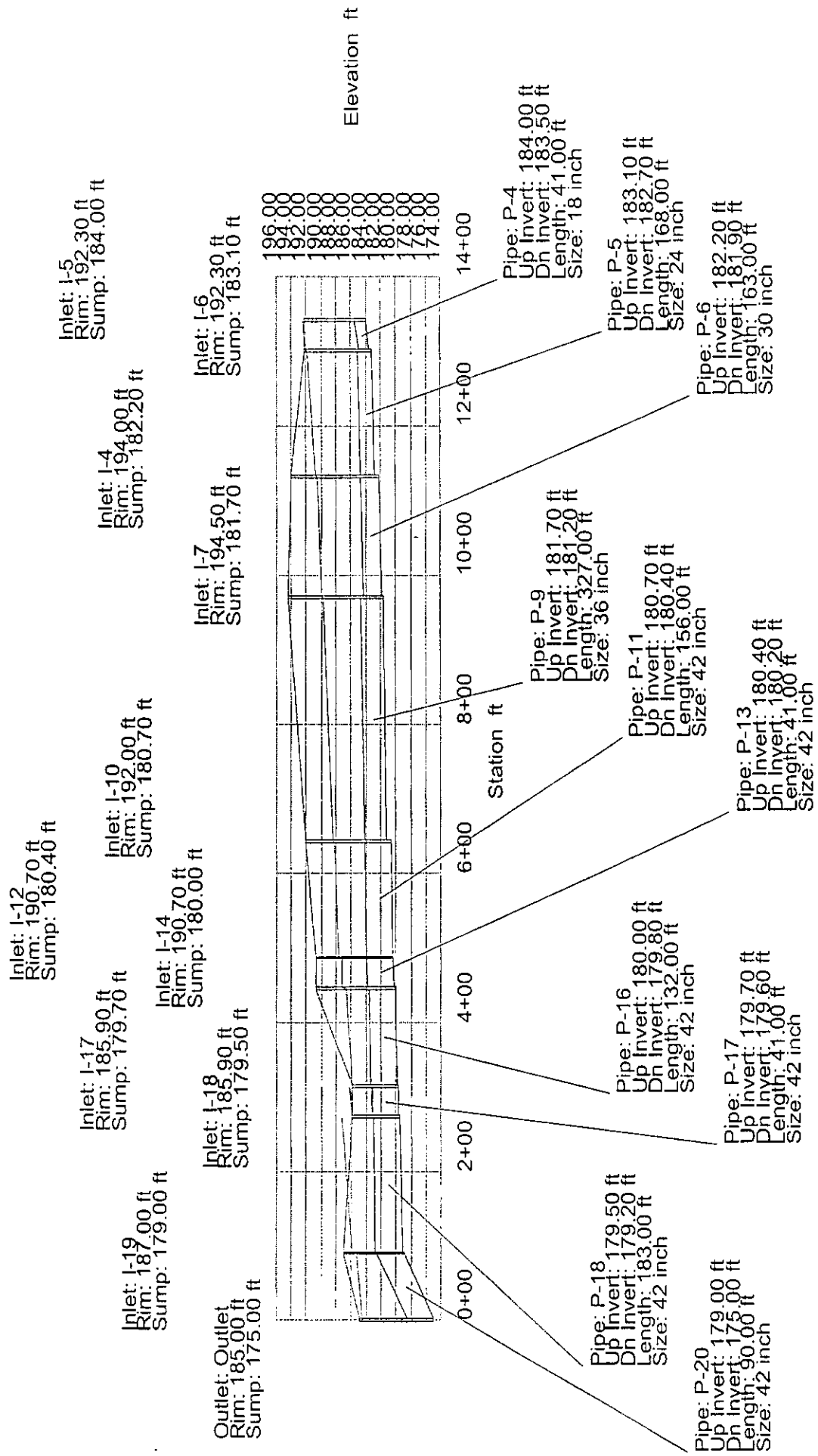
System Report

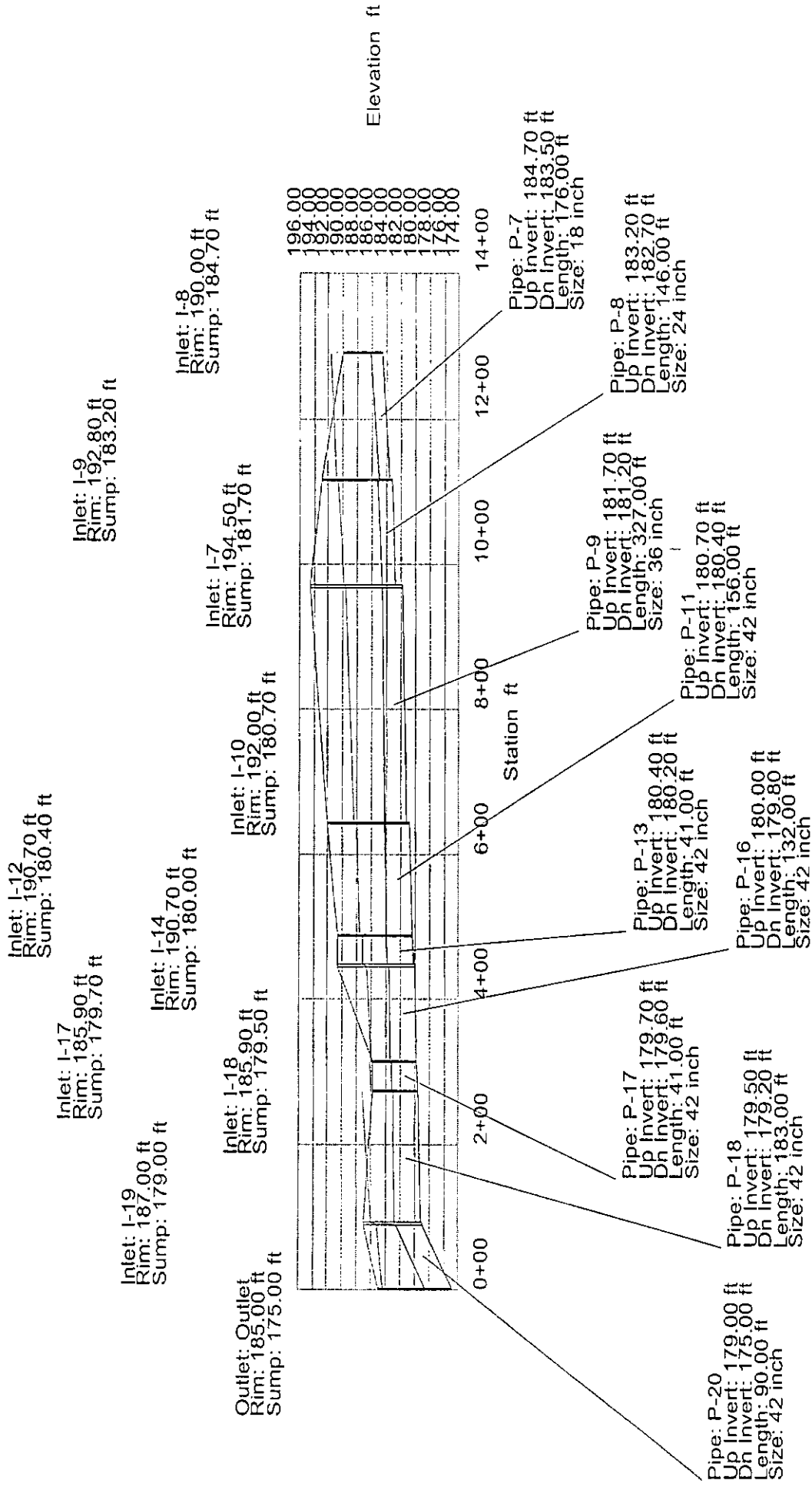
Pipe	Additional Flow (cfs)	Total Upstream Added (cfs)	Structure Discharge (cfs)	-Node- Upstream Downstream	-Section- Shape Size	Upstream Invert Elevation (ft)	Downstream Invert Elevation (ft)	-Ground- Upstream Downstream (ft)	-HGL- Upstream Downstream (ft)	-Slope- Energy Constructed (ft/ft)	-Section- Discharge Capacity (cfs)	Length (ft)	Average Velocity (ft/s)	Description
P-19	6.40	0.00	6.40	I-20	Circular	181.80	181.00	187.30	186.83	0.003713	6.40	240.00	3.62	
				I-19	18 inch		187.00		185.93	0.003333	6.06			
P-14	3.50	0.00	3.50	I-15	Circular	182.90	182.30	185.50	187.36	0.001110	3.50	177.00	1.98	
				I-16	18 inch		185.20		187.17	0.003390	6.12			
P-15	2.50	3.50	6.00	I-16	Circular	181.80	181.50	185.20	187.26	0.000704	6.00	127.00	1.91	
				I-14	24 inch		190.70		187.17	0.002362	10.99			
P-12	8.40	0.00	8.40	I-13	Circular	182.90	182.40	188.80	189.60	0.016911	8.40	114.00	6.84	
				I-12	15 inch		190.70		187.67	0.004386	4.28			
P-10	9.40	0.00	9.40	I-11	Circular	183.00	182.70	186.10	189.78	0.008009	9.40	174.00	5.32	
				I-10	18 inch		192.00		188.38	0.001724	4.36			
P-7	7.40	0.00	7.40	I-8	Circular	184.70	183.50	190.00	191.74	0.004963	7.40	176.00	4.19	
				I-9	18 inch		192.80		190.87	0.006818	8.67			
P-8	8.40	7.40	15.80	I-9	Circular	183.20	182.70	192.80	190.67	0.004878	15.80	146.00	5.03	
				I-7	24 inch		194.50		189.96	0.003425	13.24			
P-4	8.90	0.00	8.90	I-5	Circular	184.00	183.50	192.30	192.44	0.007179	8.90	41.00	5.04	
				I-6	18 inch		192.30		192.15	0.012195	11.60			
P-5	9.40	8.90	18.30	I-6	Circular	183.10	182.70	192.30	191.89	0.006544	18.30	168.00	5.83	
				I-4	24 inch		194.00		190.79	0.002381	11.04			
P-2	2.00	0.00	2.00	I-3	Circular	185.50	184.90	189.00	191.07	0.003363	2.00	170.00	1.13	
				I-2	18 inch		193.40		191.01	0.003529	6.24			
P-1	2.50	0.00	2.50	I-1	Circular	184.80	183.60	196.00	191.22	0.000566	2.50	370.00	1.41	
				I-2	18 inch		193.40		191.01	0.003243	5.98			
P-3	2.50	4.50	7.00	I-2	Circular	183.10	182.70	193.40	190.97	0.000958	7.00	191.00	2.23	
				I-4	24 inch		194.00		190.79	0.002094	10.35			
P-6	0.00	25.30	25.30	I-4	Circular	182.20	181.90	194.00	190.58	0.003805	25.30	163.00	5.15	
				I-7	30 inch		194.50		189.96	0.001840	17.60			
P-9	1.00	41.10	42.10	I-7	Circular	181.70	181.20	194.50	189.68	0.003985	42.10	327.00	5.96	
				I-10	36 inch		192.00		188.36	0.001529	26.08			
P-11	3.00	51.50	54.50	I-10	Circular	180.70	180.40	192.00	188.13	0.002935	54.50	156.00	5.66	
				I-12	42 inch		190.70		187.67	0.001923	44.12			
P-13	1.00	62.90	63.90	I-12	Circular	180.40	180.20	190.70	187.33	0.004034	63.90	41.00	6.64	
				I-14	42 inch		190.70		187.17	0.004878	70.27			
P-16	5.90	69.90	75.80	I-14	Circular	180.00	179.80	190.70	186.68	0.005677	75.80	132.00	7.88	
				I-17	42 inch		185.90		185.93	0.001515	39.16			
P-17	4.90	75.80	80.70	I-17	Circular	179.70	179.60	185.90	186.20	0.006434	80.70	41.00	8.39	
				I-18	42 inch		185.90		185.93	0.002439	49.68			
P-18	4.00	80.70	84.70	I-18	Circular	179.50	179.20	185.90	187.23	0.007088	84.70	183.00	8.80	
				I-19	42 inch		187.00		185.93	0.001639	40.73			

System Report

Pipe	Additional Flow (cfs)	Total Upstream Added (cfs)	Structure Discharge (cfs)	-Node- Upstream Downstream	-Section- Shape Size	Upstream Invert Elevation (ft)	Downstream Invert Elevation (ft)	-Ground- Upstream Downstream (ft)	-HGL- Upstream Downstream (ft)	-Slope- Energy Constructed (ft/ft)	-Section- Discharge Capacity (cfs)	Length (ft)	Average Velocity (ft/s)	Description
P-20	0.00	91.10	91.10	I-19 Outlet	Circular 42 inch	179.00	175.00	187.00 185.00	185.24 184.50	0.008200 0.044444	91.10 212.09	90.00	9.47	







Inlet: I-11
Rim: 186.10 ft
Sump: 183.00 ft

Inlet: I-12
Rim: 190.70 ft
Sump: 180.40 ft

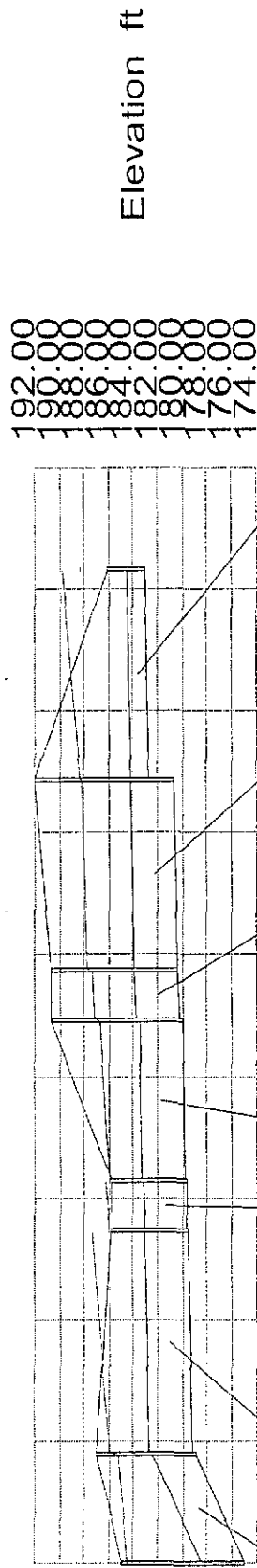
Inlet: I-17
Rim: 185.90 ft
Sump: 179.70 ft

Inlet: I-19
Rim: 187.00 ft
Sump: 179.00 ft

Inlet: I-10
Rim: 192.00 ft
Sump: 180.70 ft

Inlet: I-14
Rim: 190.70 ft
Sump: 180.00 ft

Outlet: Outlet
Rim: 185.00 ft
Sump: 175.00 ft



Pipe: P-10
Up Invert: 183.00 ft
Dn Invert: 182.70 ft
Length: 174.00 ft
Size: 18 inch

Pipe: P-11
Up Invert: 180.70 ft
Dn Invert: 180.40 ft
Length: 156.00 ft
Size: 42 inch

Pipe: P-13
Up Invert: 180.40 ft
Dn Invert: 180.20 ft
Length: 41.00 ft
Size: 42 inch

Pipe: P-16
Up Invert: 180.00 ft
Dn Invert: 179.80 ft
Length: 132.00 ft
Size: 42 inch

Pipe: P-17
Up Invert: 179.70 ft
Dn Invert: 179.60 ft
Length: 41.00 ft
Size: 42 inch

Pipe: P-18
Up Invert: 179.50 ft
Dn Invert: 179.20 ft
Length: 183.00 ft
Size: 42 inch

Pipe: P-20
Up Invert: 179.00 ft
Dn Invert: 175.00 ft
Length: 90.00 ft
Size: 42 inch

Inlet: I-14
Rim: 190.70 ft
Sump: 180.00 ft

Inlet: I-18
Rim: 185.90 ft
Sump: 179.50 ft

Inlet: I-12
Rim: 190.70 ft
Sump: 180.40 ft

Inlet: I-13
Rim: 188.80 ft
Sump: 182.90 ft

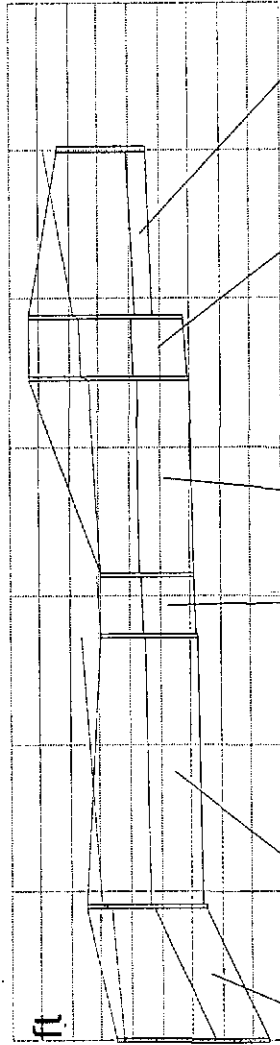
Inlet: I-17
Rim: 185.90 ft
Sump: 179.70 ft

Inlet: I-19
Rim: 187.00 ft
Sump: 179.00 ft

Outlet: Outlet
Rim: 185.00 ft
Sump: 175.00 ft

192.00
190.00
188.00
186.00
184.00
182.00
180.00
178.00
176.00
174.00

Elevation ft



7+00

6+00

5+00

4+00

3+00

2+00

1+00

0+00

Station ft

Pipe: P-12
Up Invert: 182.90 ft
Dn Invert: 182.40 ft
Length: 114.00 ft
Size: 15 inch

Pipe: P-13
Up Invert: 180.40 ft
Dn Invert: 180.20 ft
Length: 41.00 ft
Size: 42 inch

Pipe: P-16
Up Invert: 180.00 ft
Dn Invert: 179.80 ft
Length: 132.00 ft
Size: 42 inch

Pipe: P-17
Up Invert: 179.70 ft
Dn Invert: 179.60 ft
Length: 41.00 ft
Size: 42 inch

Pipe: P-18
Up Invert: 179.50 ft
Dn Invert: 179.20 ft
Length: 183.00 ft
Size: 42 inch

Pipe: P-20
Up Invert: 179.00 ft
Dn Invert: 175.00 ft
Length: 90.00 ft
Size: 42 inch

Inlet: I-16
Rim: 185.20 ft
Sump: 181.80 ft

Inlet: I-17
Rim: 185.90 ft
Sump: 179.70 ft

Inlet: I-19
Rim: 187.00 ft
Sump: 179.00 ft

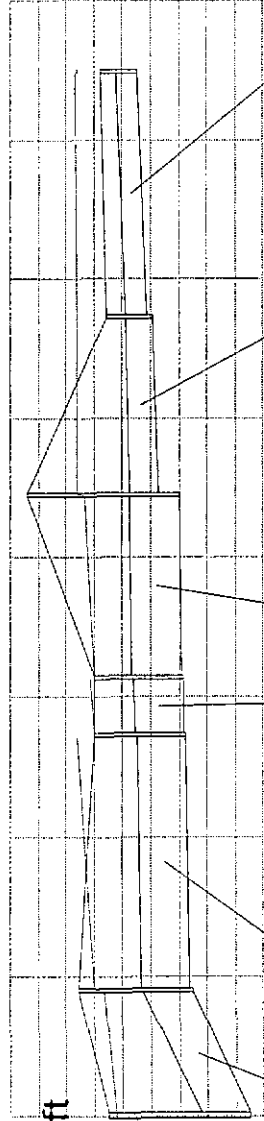
Inlet: I-15
Rim: 185.50 ft
Sump: 182.90 ft

Inlet: I-14
Rim: 190.70 ft
Sump: 180.00 ft

Inlet: I-18
Rim: 185.90 ft
Sump: 179.50 ft

Outlet: Outlet
Rim: 185.00 ft
Sump: 175.00 ft

192.00
190.00
188.00
186.00
184.00
182.00
180.00
178.00
176.00



Elevation ft

Station ft

Pipe: P-14
Up Invert: 182.90 ft
Dn Invert: 182.30 ft
Length: 177.00 ft
Size: 18 inch

Pipe: P-15
Up Invert: 181.80 ft
Dn Invert: 181.50 ft
Length: 127.00 ft
Size: 24 inch

Pipe: P-16
Up Invert: 180.00 ft
Dn Invert: 179.80 ft
Length: 132.00 ft
Size: 42 inch

Pipe: P-17
Up Invert: 179.70 ft
Dn Invert: 179.60 ft
Length: 41.00 ft
Size: 42 inch

Pipe: P-18
Up Invert: 179.50 ft
Dn Invert: 179.20 ft
Length: 183.00 ft
Size: 42 inch

Pipe: P-20
Up Invert: 179.00 ft
Dn Invert: 175.00 ft
Length: 90.00 ft
Size: 42 inch

Inlet: I-14
Rim: 190.70 ft
Sump: 180.00 ft

Inlet: I-18
Rim: 185.90 ft
Sump: 179.50 ft

Inlet: I-12
Rim: 190.70 ft
Sump: 180.40 ft

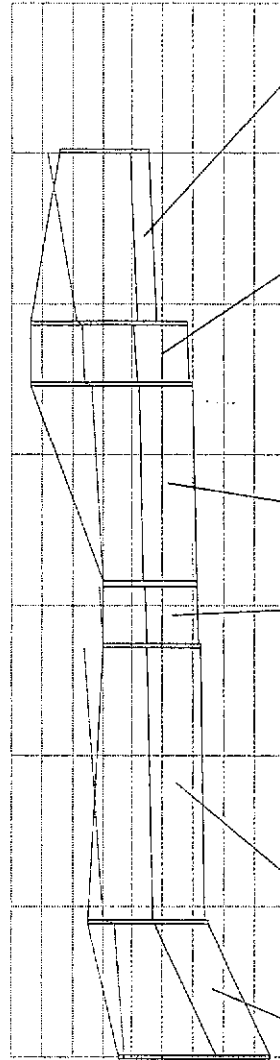
Inlet: I-17
Rim: 185.90 ft
Sump: 179.70 ft

Inlet: I-19
Rim: 187.00 ft
Sump: 179.00 ft

Outlet: Outlet
Rim: 185.00 ft
Sump: 175.00 ft

Inlet: I-13
Rim: 188.80 ft
Sump: 182.90 ft

192.00
190.00
188.00
186.00
184.00
182.00
178.00
174.00



Elevation ft

7+00

6+00

5+00

4+00

3+00

2+00

1+00

0+00

Station ft

Pipe: P-12
Up Invert: 182.90 ft
Dn Invert: 182.40 ft
Length: 114.00 ft
Size: 15 inch

Pipe: P-13
Up Invert: 180.40 ft
Dn Invert: 180.20 ft
Length: 41.00 ft
Size: 42 inch

Pipe: P-16
Up Invert: 180.00 ft
Dn Invert: 179.80 ft
Length: 132.00 ft
Size: 42 inch

Pipe: P-17
Up Invert: 179.70 ft
Dn Invert: 179.60 ft
Length: 41.00 ft
Size: 42 inch

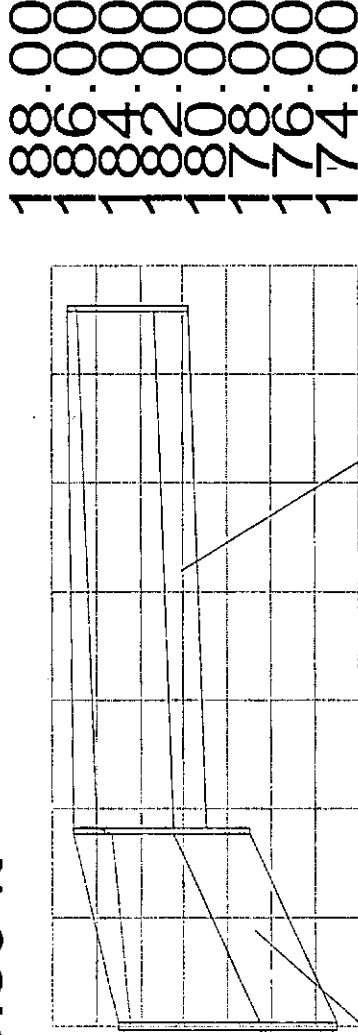
Pipe: P-18
Up Invert: 179.50 ft
Dn Invert: 179.20 ft
Length: 183.00 ft
Size: 42 inch

Pipe: P-20
Up Invert: 179.00 ft
Dn Invert: 175.00 ft
Length: 90.00 ft
Size: 42 inch

Inlet: I-19
 Rim: 187.00 ft
 Sump: 179.00 ft

Inlet: I-20
 Rim: 187.30 ft
 Sump: 181.80 ft

Outlet: Outlet
 Rim: 185.00 ft
 Sump: 175.00 ft



0+00+50+00+50+00+50+00+50

Station ft

Elevation ft

Pipe: P-19
 Up Invert: 181.80 ft
 Dn Invert: 181.00 ft
 Length: 240.00 ft
 Size: 18 inch

Pipe: P-20
 Up Invert: 179.00 ft
 Dn Invert: 175.00 ft
 Length: 90.00 ft
 Size: 42 inch