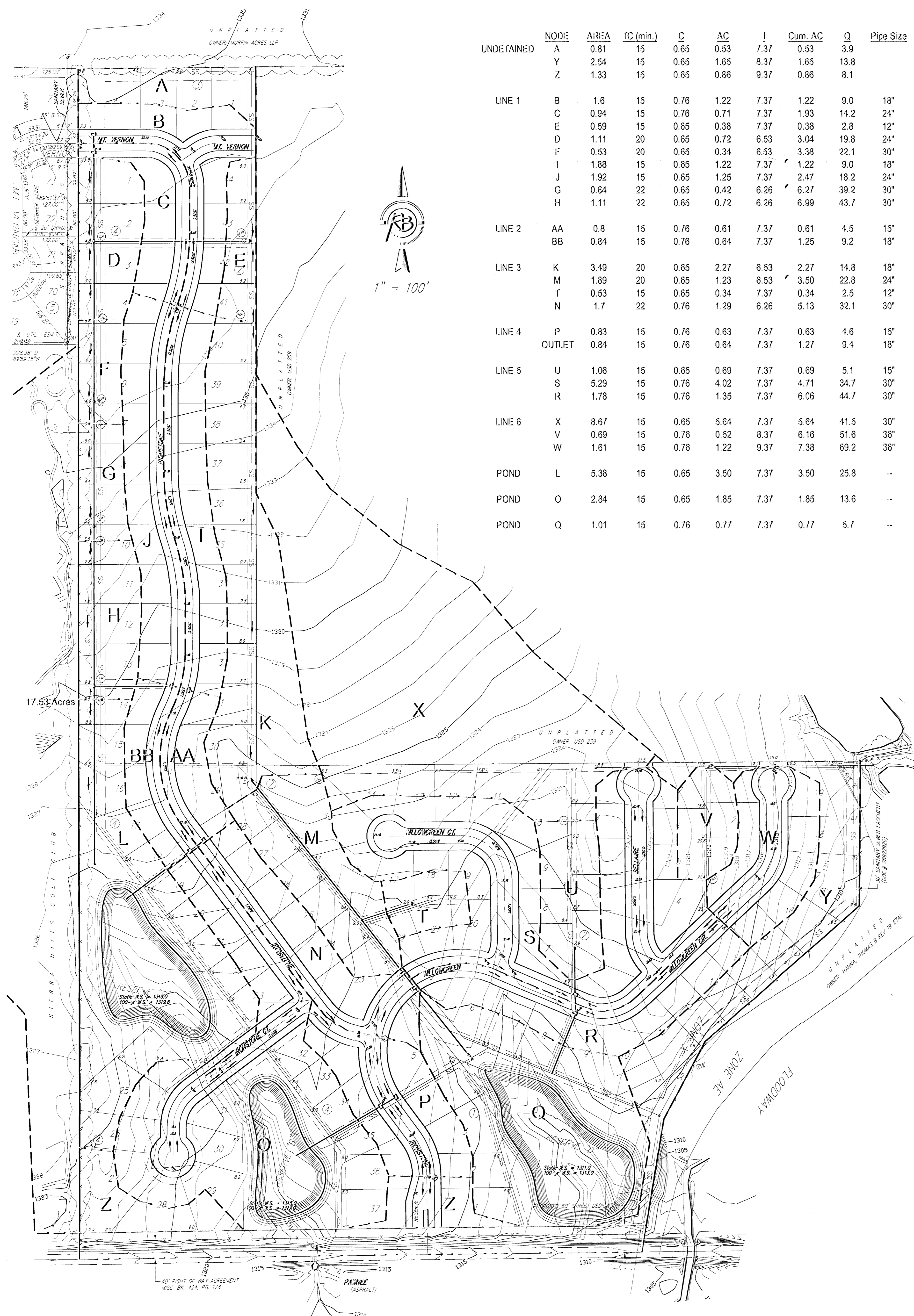


Drainage Plan

SIERRA HILLS 2ND ADDITION

An Addition to Wichita, Sedgwick County, Kansas



	NODE	AREA	TC (min.)	C	AC	I	Cum. AC	Q	Pipe Size
UNDETAINED	A	0.81	15	0.65	0.53	7.37	0.53	3.9	
	Y	2.54	15	0.65	1.65	8.37	1.65	13.8	
	Z	1.33	15	0.65	0.86	9.37	0.86	8.1	
LINE 1	B	1.6	15	0.76	1.22	7.37	1.22	9.0	18"
	C	0.94	15	0.76	0.71	7.37	1.93	14.2	24"
	E	0.59	15	0.65	0.38	7.37	0.38	2.8	12"
	D	1.11	20	0.65	0.72	6.53	3.04	19.8	24"
	F	0.53	20	0.65	0.34	6.53	3.38	22.1	30"
	I	1.88	15	0.65	1.22	7.37	1.22	9.0	18"
	J	1.92	15	0.65	1.25	7.37	2.47	18.2	24"
	G	0.64	22	0.65	0.42	6.26	6.27	39.2	30"
LINE 2	H	1.11	22	0.65	0.72	6.26	6.99	43.7	30"
	AA	0.8	15	0.76	0.61	7.37	0.61	4.5	15"
LINE 3	BB	0.84	15	0.76	0.64	7.37	1.25	9.2	18"
	K	3.49	20	0.65	2.27	6.53	2.27	14.8	18"
LINE 4	M	1.89	20	0.65	1.23	6.53	3.50	22.8	24"
	N	0.53	15	0.65	0.34	7.37	0.34	2.5	12"
	OUTLET	1.7	22	0.76	1.29	6.26	5.13	32.1	30"
LINE 5	P	0.83	15	0.76	0.63	7.37	0.63	4.6	15"
	R	0.84	15	0.76	0.64	7.37	1.27	9.4	18"
	U	1.06	15	0.65	0.69	7.37	0.69	5.1	15"
LINE 6	S	5.29	15	0.76	4.02	7.37	4.71	34.7	30"
	V	1.78	15	0.76	1.35	7.37	6.06	44.7	30"
	X	8.67	15	0.65	5.64	7.37	5.64	41.5	30"
POND	W	0.69	15	0.76	0.52	8.37	6.16	51.6	36"
	L	1.61	15	0.76	1.22	9.37	7.38	69.2	36"
	O	5.38	15	0.65	3.50	7.37	3.50	25.8	--
POND	Q	2.84	15	0.65	1.85	7.37	1.85	13.6	--
POND		1.01	15	0.76	0.77	7.37	0.77	5.7	--