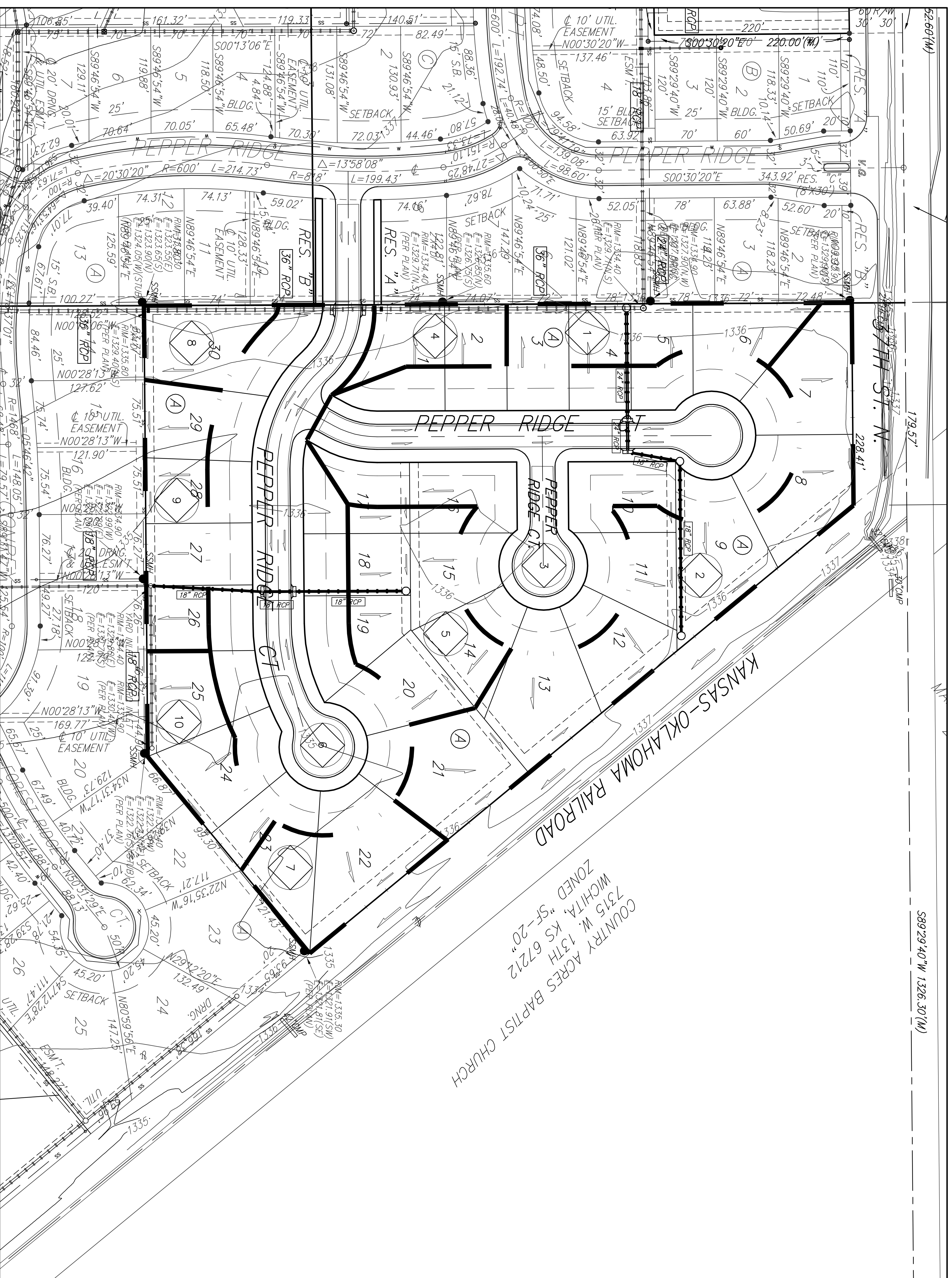


# DRAINAGE PLAN

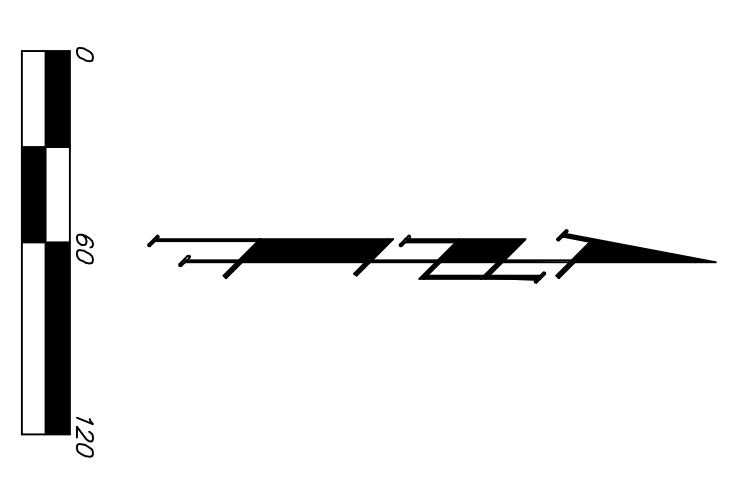
## TYLER'S LANDING 4th ADDITION

### WICHITA, SEDGWICK COUNTY, KANSAS



NOTE: There is no FEMA SFHA located on this property as of May 8, 2008.

Basin ID	Area	Developed	Flow	Flow	Flow
	acres	2-yr	10-yr	100-yr	
1	0.5	0.6	1.1	2.3	2.3
2	1.6	1.9	3.8	7.8	7.8
3	2.6	3.0	6.1	12.4	12.4
4	0.3	0.3	0.6	1.3	1.3
5	0.7	0.8	1.7	3.4	3.4
6	2.1	2.4	4.9	10.1	10.1
7	0.4	0.5	0.8	1.7	1.7
8	0.4	0.5	0.8	1.7	1.7
9	0.5	0.6	1.2	2.2	2.2
10	0.4	0.5	1.0	2.0	2.0
TOTAL	9.4	11	22	45	45

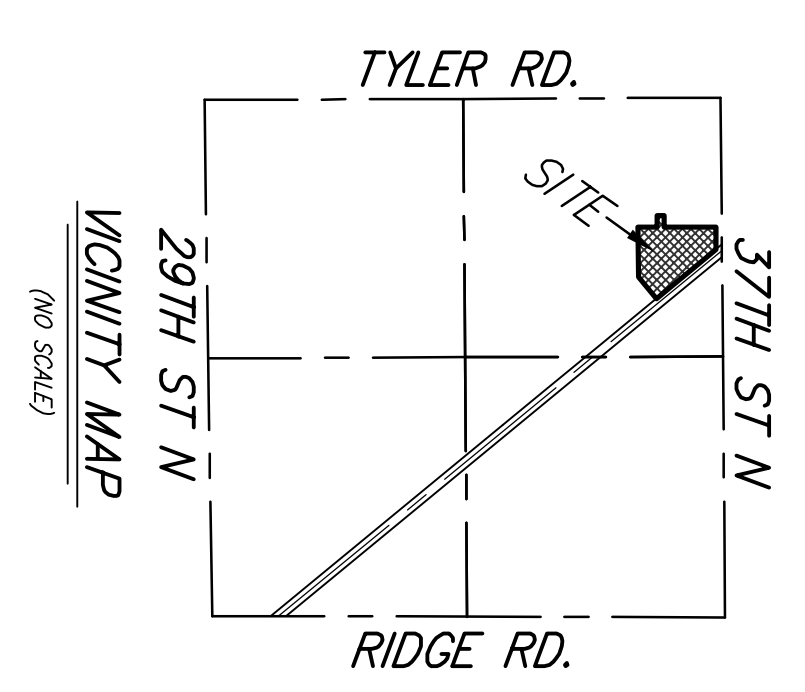


OWNER:  
 G & K REALTY, LLC  
 8100 E. 22ND STREET NORTH  
 BLDG. 1000 22ND STREET NORTH  
 WICHITA, KS 67226-2310  
 PH: 316-684-1300

LEGAL DESCRIPTION:  
 A REPLAT OF ALL OF LOT 1, BLOCK A, TYLER'S LANDING  
 3RD ADDITION, WICHITA, SEDGWICK COUNTY, KANSAS.

ENCUMBRANCE:  
 "P" - WALL IN CENTER OF CURVE - 5/8" OF THE MOST  
 NORTHERLY FOREST RIDGE CT., TYLER'S LANDING 3RD  
 ELEV. = 1340.13 NGVD09

"C" - CUT ON & OF CATCH BASIN, LB SOUTH OF THE SW  
 CORNER OF LOT 14, BLOCK A, TYLER'S LANDING 3RD  
 ELEV. = 1337.69 NGVD09



## DRAINAGE PLAN

### TYLER'S LANDING 4th ADDITION

**B** **Baughman Company, P.A.**  
 315 Ellis St. Wichita, KS 67211 P 316-262-1771 F 316-262-1049  
 ENGINEERING | SURVEYING | PLANNING | LANDSCAPE ARCHITECTURE