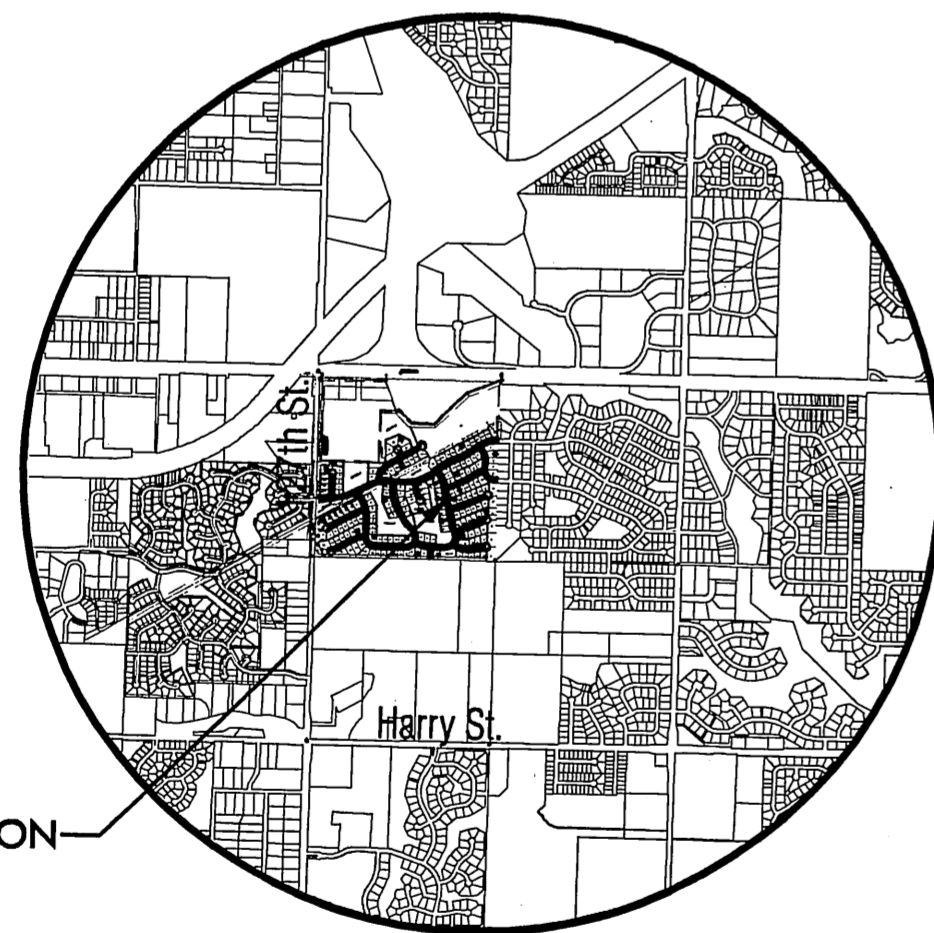
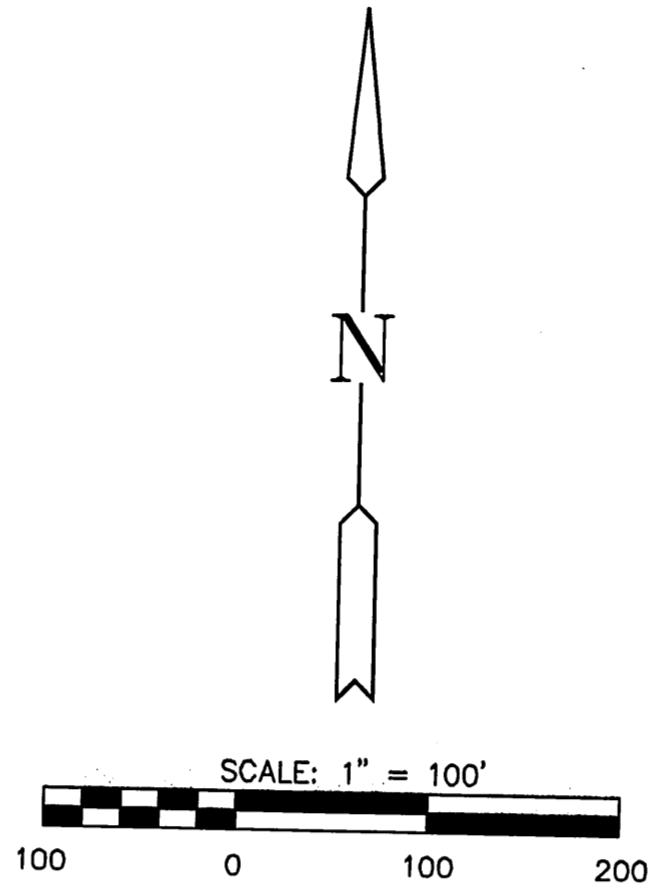
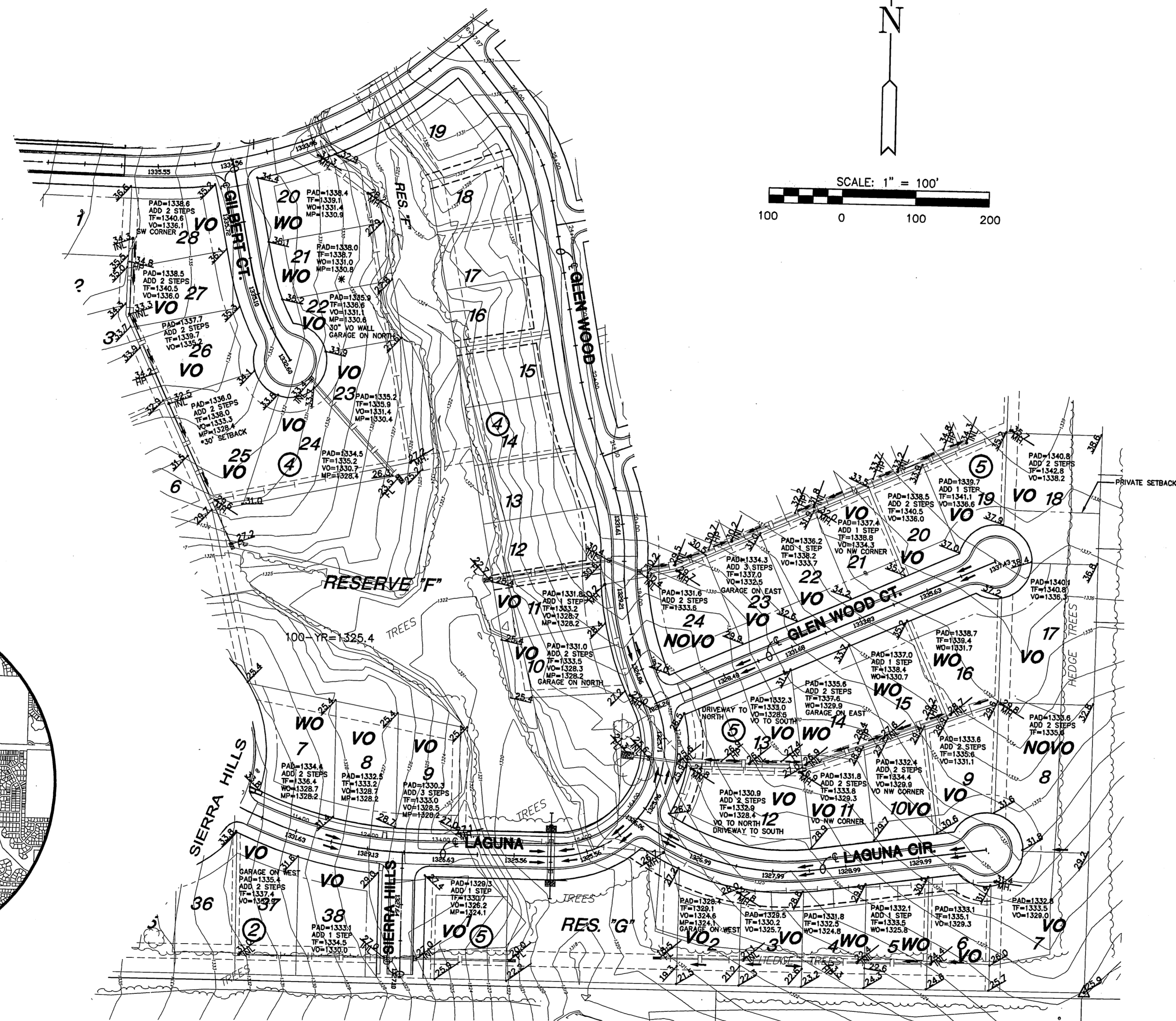


MINIMUM PAD ELEVATIONS (LOWEST OPENINGS)			
LOTS	BLOCK	ELEVATION	
		(CITY DATUM)	(NGVD 29)
7	4	141.0	1328.4
8	4	141.0	1328.4
9	4	141.0	1328.4
10	4	141.0	1328.4
11	4	141.0	1328.4
20	4	143.5	1330.9
21	4	143.4	1330.8
22	4	143.2	1330.6
23	4	143.0	1330.4
24	4	141.0	1328.4
25	4	141.0	1328.4
1	5	136.7	1324.1
2	5	136.7	1324.1



VICINITY MAP



- ### LEGEND
- ☆ - CONIFEROUS TREE
  - - DECIDUOUS TREE
  - SN - SIGN
  - PH - POWER POLE
  - ELEC - ELECTRIC BOX
  - LP - LIGHT POLE
  - FH - FIRE HYDRANT
  - WV - WATER VALVE
  - WM - WATER METER
  - SC - SECTION CORNER
  - BM - BENCHMARK
  - - EASEMENT
  - - BUILDING SETBACK
  - - FENCE
  - - STORM SEWER PIPE
  - - WATER LINE
  - - SANITARY SEWER LINE
  - - GAS LINE
  - - GAS PIPELINE
  - - TELEPHONE LINE
  - - UNDERGROUND ELEC.
  - - OVERHEAD ELECTRIC
  - - FIBER OPTIC CABLE
  - - SILT BARRIER
  - - BACK OF CURB PROTECTION
  - - INLET PROTECTION
  - - AREA INLET PROTECTION
  - - STABILIZED ENTRANCE
  - - DIRECTION OF PROPOSED DRAINAGE
  - - WALK OUT VIEW OUT INFORMATION
  - - SPOT ELEVATIONS

- WO - WALK OUT
- VO - VIEW OUT
- PVO - PARTIAL VIEW OUT
- PWO - PARTIAL WALK OUT
- NOVO - NO VIEW OUT
- \* - THICKENED FOOTING

### BENCH MARKS

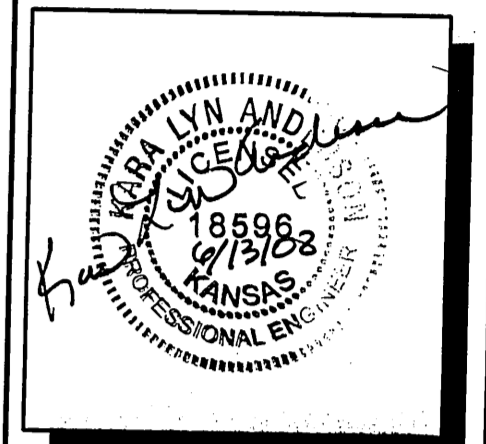
- BM #1 Railroad spike in South face of power pole, 25' +/- East and 70' +/- South of West Quarter Corner of Sec. 26, T 27 S, R 2 E. Elev. = 1337.50 (NGVD)
- BM #2 Chiseled square on top of curb at East end of median Island on Lincoln on West side of 127th Street East. Elev. = 1349.55 (NGVD)
- BM #3 Railroad spike in Southwest face of power 4th pole South of Kellogg on East Side of 127th Street East, 973' South and 24' East of Northwest Corner Sec. 26, T 27 S, R 2 E. Elev. = 1353.93 (NGVD)
- BM #4 Fence T-post at Northwest corner of property, 40' East of centerline 127th And 10' South of the South Kellogg right of way. Elev. = 1360.81 (NGVD)
- BM #5 Fence T-post 10' South and 10' West of highway right of way corner, West side K-96 Interchange and South side Kellogg, 969' East and 122' South of Northwest corner Sec. 26, T 27 S, R 2 E. Elev. = 1346.25 (NGVD)
- BM #6 Fence T-post 10' South and 10' West of highway right of way corner, East Side of K-96 Interchange and South side of Kellogg, 1696' East and 770' South of the Northwest corner Sec. 26, T 27 S, R 2 E. Elev. = 1342.08 (NGVD)
- BM #7 Fence T-post 4' South of South Kellogg right of way fence, 145' West-Southwest of the Northeast property corner, 135' West and 176' South of the North Quarter corner of Sec. 26, T 27 S, R 2 E. Elev. = 1326.40 (NGVD)

\* NOTE: LOTS MAY REQUIRE THICKER FOOTING TO MATCH EXISTING GROUND.

REVISION HISTORY		
DATE	REVISION	REASON
MARCH 20, 2008	INITIAL SUBMITTAL	
APRIL 4, 2008	LOT 1 BLOCK 5 LOWERED	DEVELOPER REQUEST TO AVOID COMPACTED FILL
APRIL 4, 2008	LOT 24 BLOCK 5 RAISED	DEVELOPER REQUEST TO KEEP TF CLOSE TO ADJ. HOUSE
APRIL 4, 2008	LOT 9 BLOCK 4 FROM PVO TO VO	ADD 3RD STEP & LOWER WALL CLOSER TO MIN. PAD
APRIL 14-29, 2008	SEVERAL MINOR ADJUSTMENTS	BASED ON CONVERSATIONS WITH DEVELOPER

**MKEC**  
ENGINEERING  
CONSULTANTS, INC.

411 N. WEBB ROAD  
WICHITA, KS. 67206  
316 - 684 - 9600



**COUNTRY HOLLOW**  
 COUNTRY HOLLOW  
 WICHITA KANSAS  
**LOT GRADING PHASE 2**

DATE  
DECEMBER 2007

REVISED

DESIGN BY  
KLA

DRAWN BY  
CMJ

CHECKED BY  
KLA

SHEET NUMBER

1

J:\Civil\04429\dwg\Lot\_Grad\LOT\_GRD\_PH2.dwg