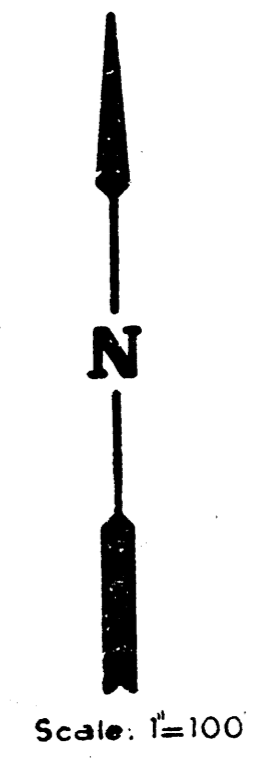
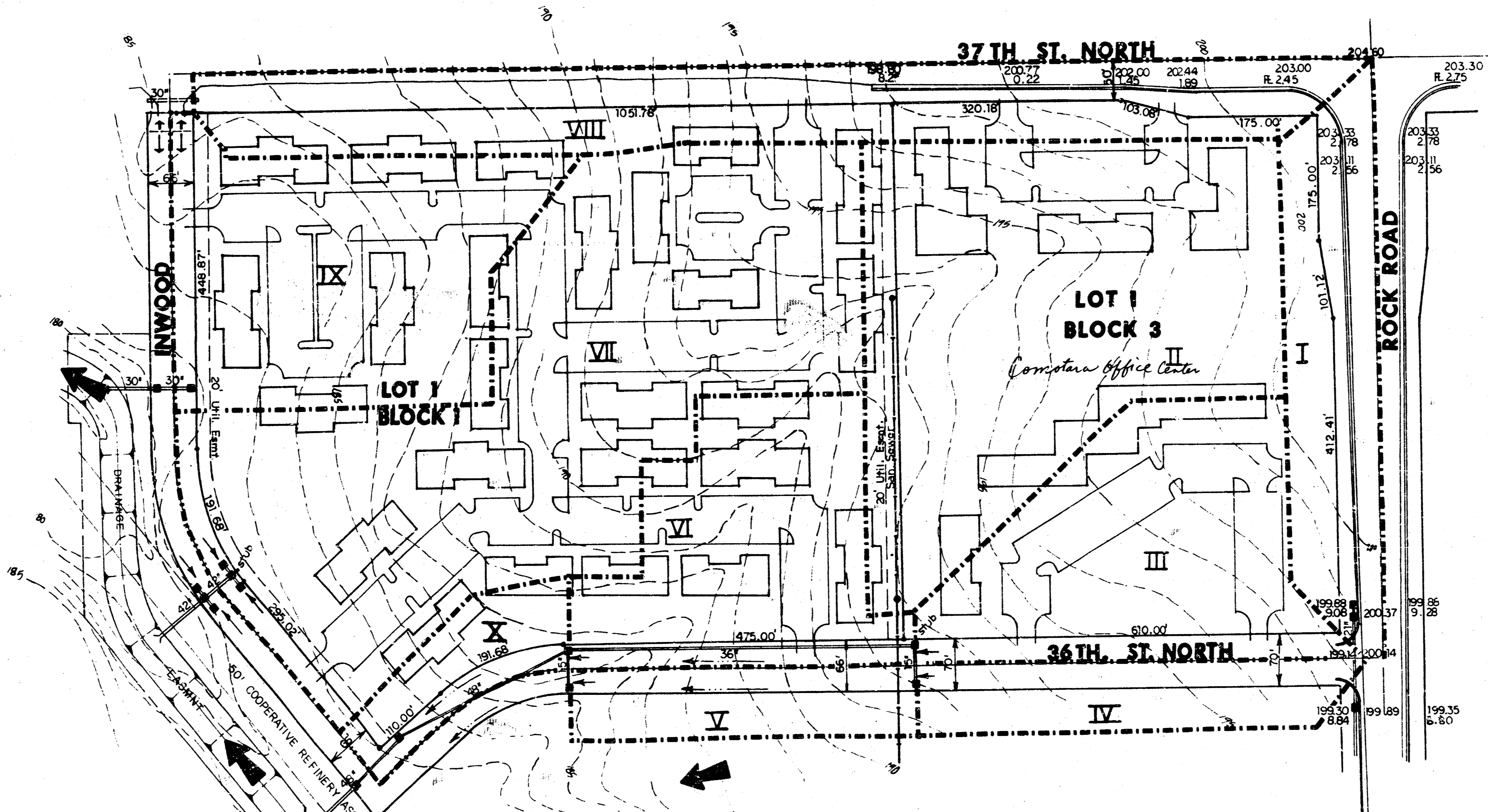


37TH ROCK ADDITION
(Drainage)



	AREA	AREA ACCUM.	C	T _r	I	I	Q	Q	PIPE SIZE & SLOPE
I.	2.1		0.7	15	5.21	8.96	7.6	13.2	21" at 0.28 - Rock Road
II.	5.9		0.7	20	4.66	8.1	19.2	33.2	30" at 0.242 Stub to Internal System
III.	3.3		0.7	18	4.86	8.37	11.2	19.3	
		9.2	0.7	20	4.66	8.03			
IV.	1.2		0.7	15	5.21	8.98	4.4	7.5	15" at 0.442
		10.4	0.7	20	4.66	8.03	33.9	56.4	36" at 0.282
V.	1.0		0.7	15	5.21	8.98	3.6	4.3	15" at 0.382
VI.	2.8		0.7	18	4.86	8.37	9.5	14.4	
		13.2	0.7	22	4.49	7.75	41.2	68.0	48" at 0.263
VII.	8.2		0.7	25	4.27	7.36	24.5	42.2	42" at 0.22 Stub to Internal System
VIII.	3.8		0.7	15	5.21	8.98	13.9	23.9	30" at 0.342
IX.	3.7		0.7	18	4.86	8.37	12.6	21.7	30" at 0.303
X.	1.0		0.7	15	5.21	8.98	3.6	6.3	1 Inlet



**DRAINAGE PLAN
FOR
37TH ROCK
ADDITION**

MID-KANSAS ENGINEERING CONSULTANTS PA
240 NORTH ROCK ROAD
SUITE 130
WICHITA, KANSAS 67206

682-6561

Drawn by	
Checked by	
Date	
Job No.	
Sheet	
of	