

**LRT GRADING PLAN**  
**ABERDEEN 3RD ADDITION**

TO WICHITA, REDWICK COUNTY, KANSAS  
 DATE MAR. 11, 1999  
 REV. MARCH 20, 2000


Scale: 1" = 80'  

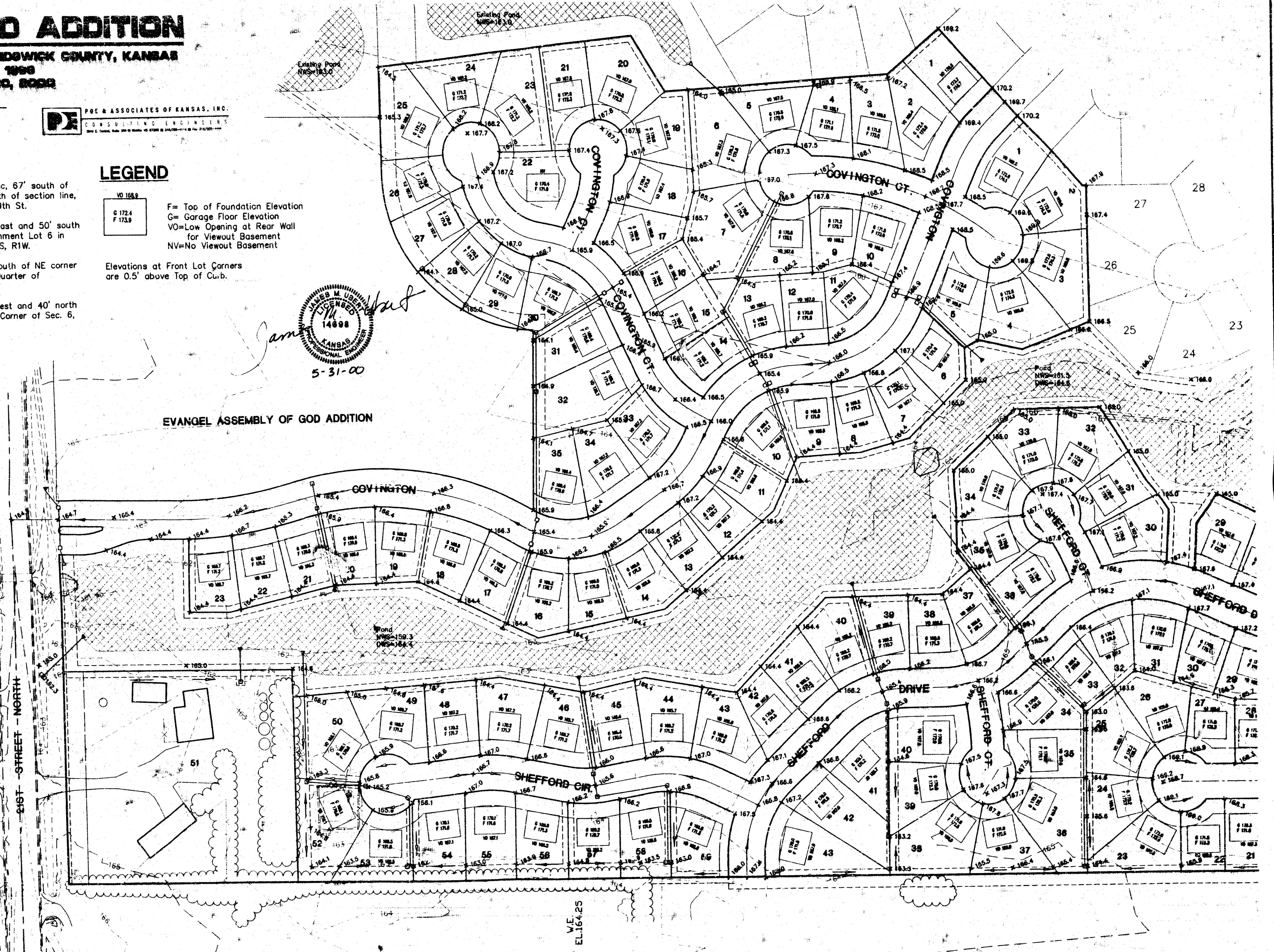

**BENCHMARK**

- (City of Wichita Datum)
1. City of Wichita Benchmark disc, 67' south of centerline 21st St. & 79' south of section line, and 46' east of centerline 119th St. Elev. 172.08
  2. 80d nail in power pole, 30' east and 50' south of Northwest Corner of Government Lot 6 in SW Quarter of Section 6, T27S, R1W. Elev. 172.08
  3. 80d nail in power pole 50' south of NE corner of Government Lot 3 in NW Quarter of Section 6, T27S, R1W. Elev. 179.98
  4. 80d nail in power pole 40' west and 40' north of the NW Corner of the NW Corner of Sec. 6, T27S, R1W. Elev. 175.05

**LEGEND**

- |                    |  |
|--------------------|--|
| VO 168.9           | F= Top of Foundation Elevation                   |
| G 172.4<br>F 173.9 | G= Garage Floor Elevation                        |
|                    | VO=Low Opening at Rear Wall for Viewout Basement |
|                    | NV=No Viewout Basement                           |
- Elevations at Front Lot Corners are 0.5' above Top of Curb.

*James M. Underwood*  
  
 5-31-00



**APPROVED DRAINAGE PLAN**

**ABERDEEN 3RD**

6. APPROVED BY: [Signature] DATE: 03/31/00

**LEGEND**

VI 188.2  
G 172.4  
F 173.8  
F= Top of Foundation Elevation  
G= Garage Floor Elevation  
VO=Low Opening at Rear Wall  
for Viewout Basement  
NV=No Viewout Basement

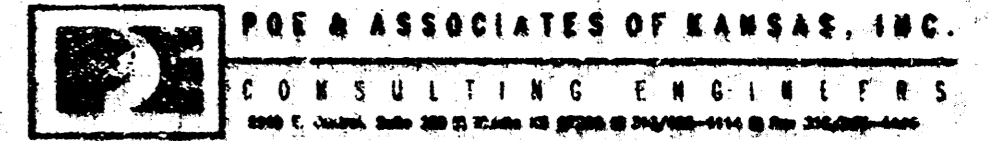
Elevations at Front Lot Corners  
are 0.5' above Top of Curb.

**LOT GRADING PLAN**

**ABERDEEN 3RD ADDITION**

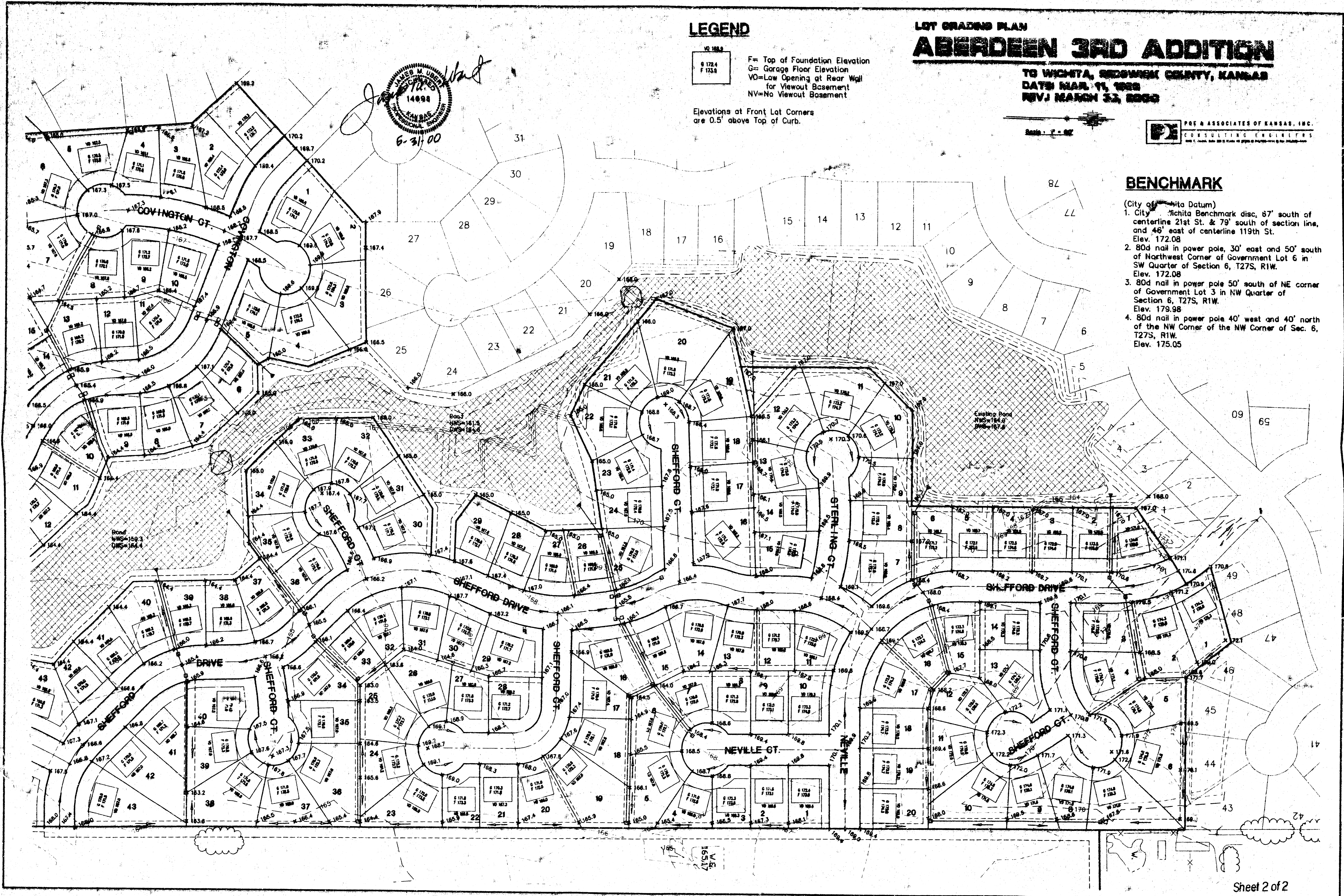
TO WICHITA, REDWEEK COUNTY, KANSAS  
DATE: MAR. 11, 1928  
REV. J. MARCH 22, 1928

Scale: 1" = 60'



**BENCHMARK**

- (City of Wichita Datum)
1. City of Wichita Benchmark disc, 87' south of centerline 21st St. & 79' south of section line, and 46' east of centerline 119th St. Elev. 172.08
  2. 80d nail in power pole, 30' east and 50' south of Northwest Corner of Government Lot 6 in SW Quarter of Section 6, T27S, R1W. Elev. 172.08
  3. 80d nail in power pole 50' south of NE corner of Government Lot 3 in NW Quarter of Section 6, T27S, R1W. Elev. 179.98
  4. 80d nail in power pole 40' west and 40' north of the NW Corner of the NW Corner of Sec. 6, T27S, R1W. Elev. 175.05



6. MAPS AND PLANS DIVISION, MAY 21, 1928, 09 2010