

**LEGEND:**

- G = GARAGE FLOOR ELEVATION
- F = TOP OF FOUNDATION WALL ELEVATION
- R = TOP OF REAR WALL ELEVATION (VIEW OUT)
- (VO) = VIEW OUT
- (NV) = NO VIEW OUT

NOTE: ELEVATIONS SHOWN AT STREET RIGHT-OF-WAY ARE STREET RIGHT-OF-WAY ELEVATIONS NOT TOP OF CURB. TOP OF CURB ELEVATIONS ARE 0.5' LOWER THAN STREET RIGHT-OF-WAY.

**BENCHMARK:**

1. (City of Wichita Datum) Benchmark: disc, 67' south of centerline 21st St. & 79' south of section line, and 46' east of centerline 119th St. Elev. 172.08
2. 80d nail in power pole, 30' east and 50' south of Northwest Corner of Government Lot 6 in SW Quarter of Section 6, T27S, R1W. Elev. 172.08
3. 80d nail in power pole 50' south of NE corner of Government Lot 3 in NW Quarter of Section 6, T27S, R1W. Elev. 179.98
4. 80d nail in power pole 40' west and 40' north of the NW Corner of the NW Corner of Sec. 6, T27S, R1W. Elev. 175.05

**LOT GRADING PLAN**  
**ABERDEEN 2ND ADDITION**  
**TO WICHITA, SEDGWICK COUNTY, KANSAS**

2-20-97  
 Revised 6-8-98

SHEET 1 OF 2

SCALE: 1"=80'

MINIMUM LOW OPENING ELEVATION		
Lot No.	Block No.	Elevation
1-17	3	169.0
18-25	3	167.0

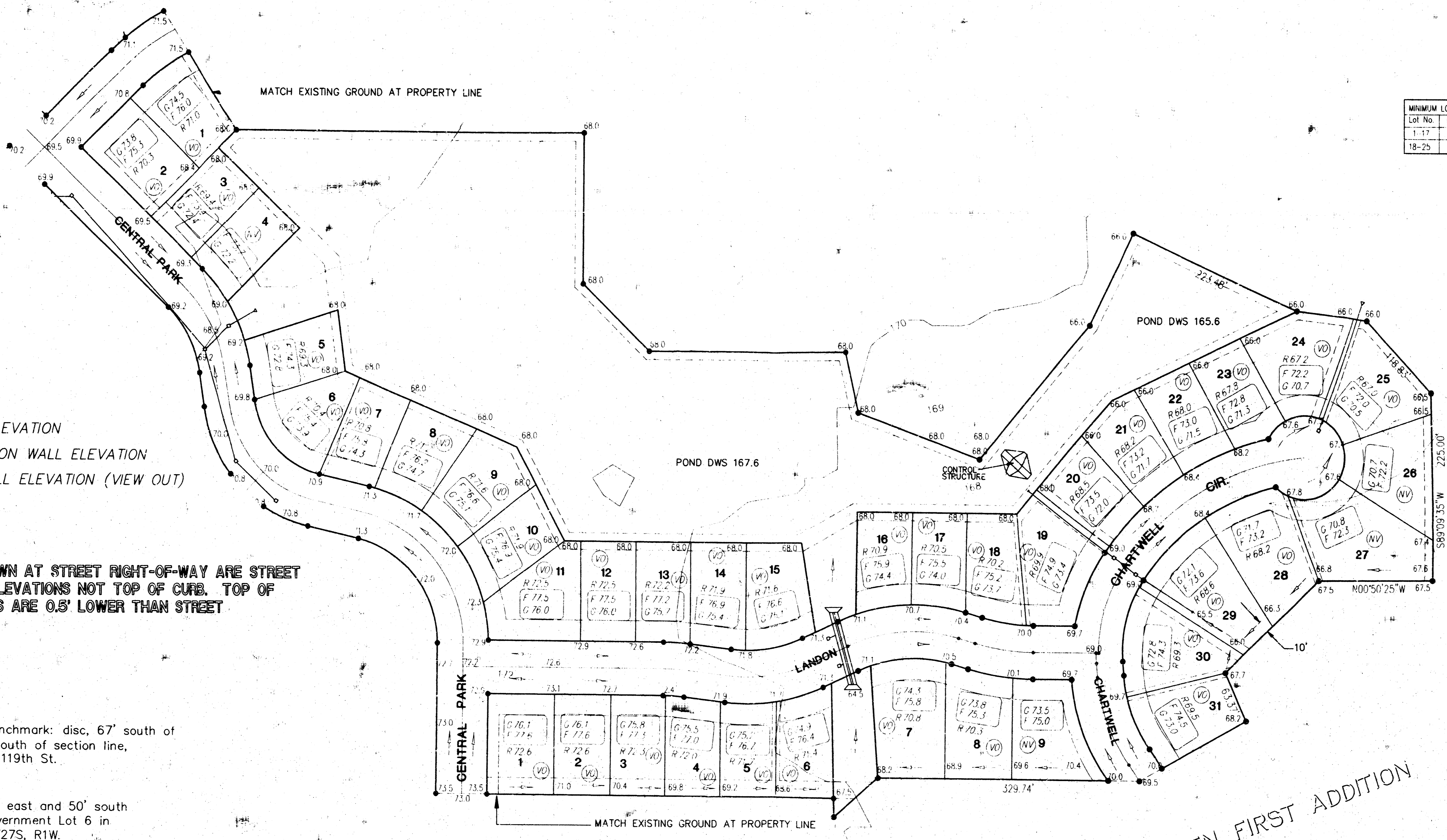
**LEGEND:**

- G = GARAGE FLOOR ELEVATION
- F = TOP OF FOUNDATION WALL ELEVATION
- R = TOP OF REAR WALL ELEVATION (VIEW OUT)
- (VO) = VIEW OUT
- (NV) = NO VIEW OUT

**NOTE:** ELEVATIONS SHOWN AT STREET RIGHT-OF-WAY ARE STREET RIGHT-OF-WAY ELEVATIONS NOT TOP OF CURB. TOP OF CURB ELEVATIONS ARE 0.8' LOWER THAN STREET RIGHT-OF-WAY.

**BENCHMARK:**

1. (City of Wichita Datum) Benchmark: disc, 67' south of centerline 21st St. & 79' south of section line, and 46' east of centerline 119th St. Elev. 172.08
2. 80d nail in power pole, 30' east and 50' south of Northwest Corner of Government Lot 6 in SW Quarter of Section 6, T27S, R1W. Elev. 172.08
3. 80d nail in power pole 50' south of NE corner of Government Lot 3 in NW Quarter of Section 6, T27S, R1W. Elev. 179.98
4. 80d nail in power pole 40' west and 40' north of the NW Corner of the NW Corner of Sec. 5, T27S, R1W. Elev. 175.05



# LOT GRADING PLAN ABERDEEN 2ND ADDITION

TO WICHITA, SEDGWICK COUNTY, KANSAS

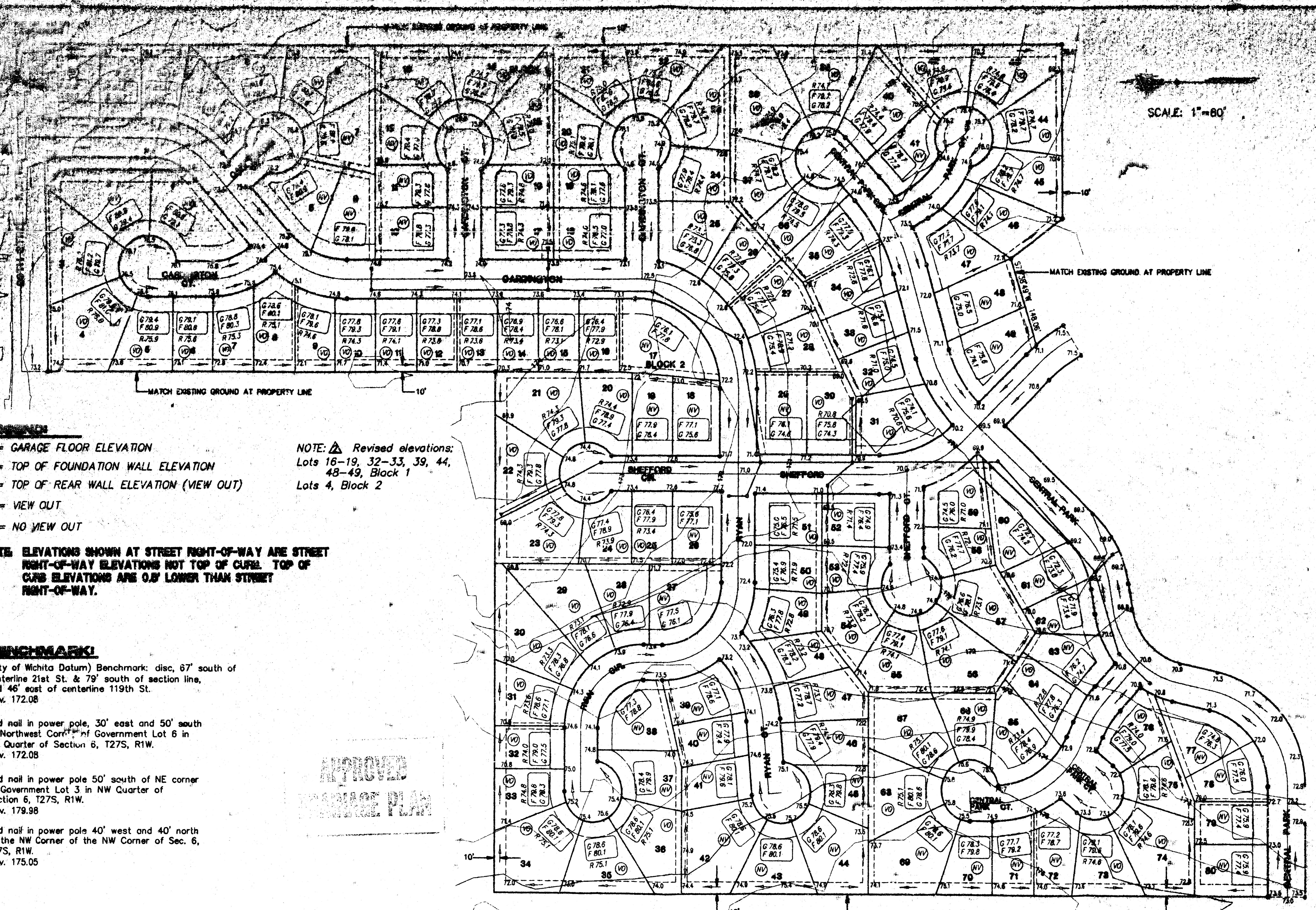
2-20-97  
Revised 6-8-98

SHEET 2 OF 2

F:\APPS\DCAP\1556\11grad.dwg Fri Jun 12 10:21:03 1998 James W. Jbert, P.E. & Associates of Kansas, Inc.







SCALE: 1"=80'

- LEGEND**
- G = GARAGE FLOOR ELEVATION
  - F = TOP OF FOUNDATION WALL ELEVATION
  - R = TOP OF REAR WALL ELEVATION (VIEW OUT)
  - (VO) = VIEW OUT
  - (NV) = NO VIEW OUT

NOTE:  $\Delta$  Revised elevations:  
 Lots 16-19, 32-33, 39, 44,  
 48-49, Block 1  
 Lots 4, Block 2

NOTE: ELEVATIONS SHOWN AT STREET RIGHT-OF-WAY ARE STREET  
 RIGHT-OF-WAY ELEVATIONS NOT TOP OF CURB. TOP OF  
 CURB ELEVATIONS ARE 0.5' LOWER THAN STREET  
 RIGHT-OF-WAY.

- BENCHMARK**
1. (City of Wichita Datum) Benchmark: disc, 67' south of centerline 21st St. & 79' south of section line, and 46' east of centerline 119th St. Elev. 172.08
  2. 80d nail in power pole, 30' east and 50' south of Northwest Corner of Government Lot 6 in SW Quarter of Section 6, T27S, R1W. Elev. 172.08
  3. 80d nail in power pole 50' south of NE corner of Government Lot 3 in NW Quarter of Section 6, T27S, R1W. Elev. 179.98
  4. 80d nail in power pole 40' west and 40' north of the NW Corner of the NW Corner of Sec. 6, T27S, R1W. Elev. 175.05

APPROVED  
 GRADING PLAN

# LOT GRADING PLAN ABERDEEN 2ND ADDITION

TO WICHITA, SEDGWICK COUNTY, KANSAS

2-20-97  
 Revised 6-8-98  $\Delta$  Revised 12-14-98

SHEET 1 OF 2