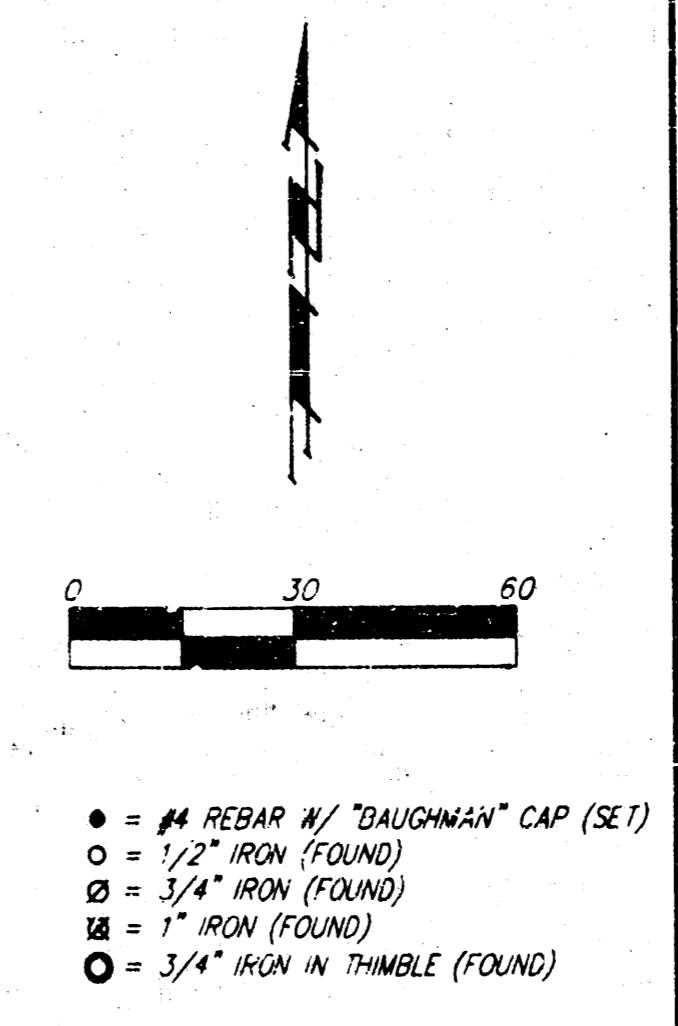
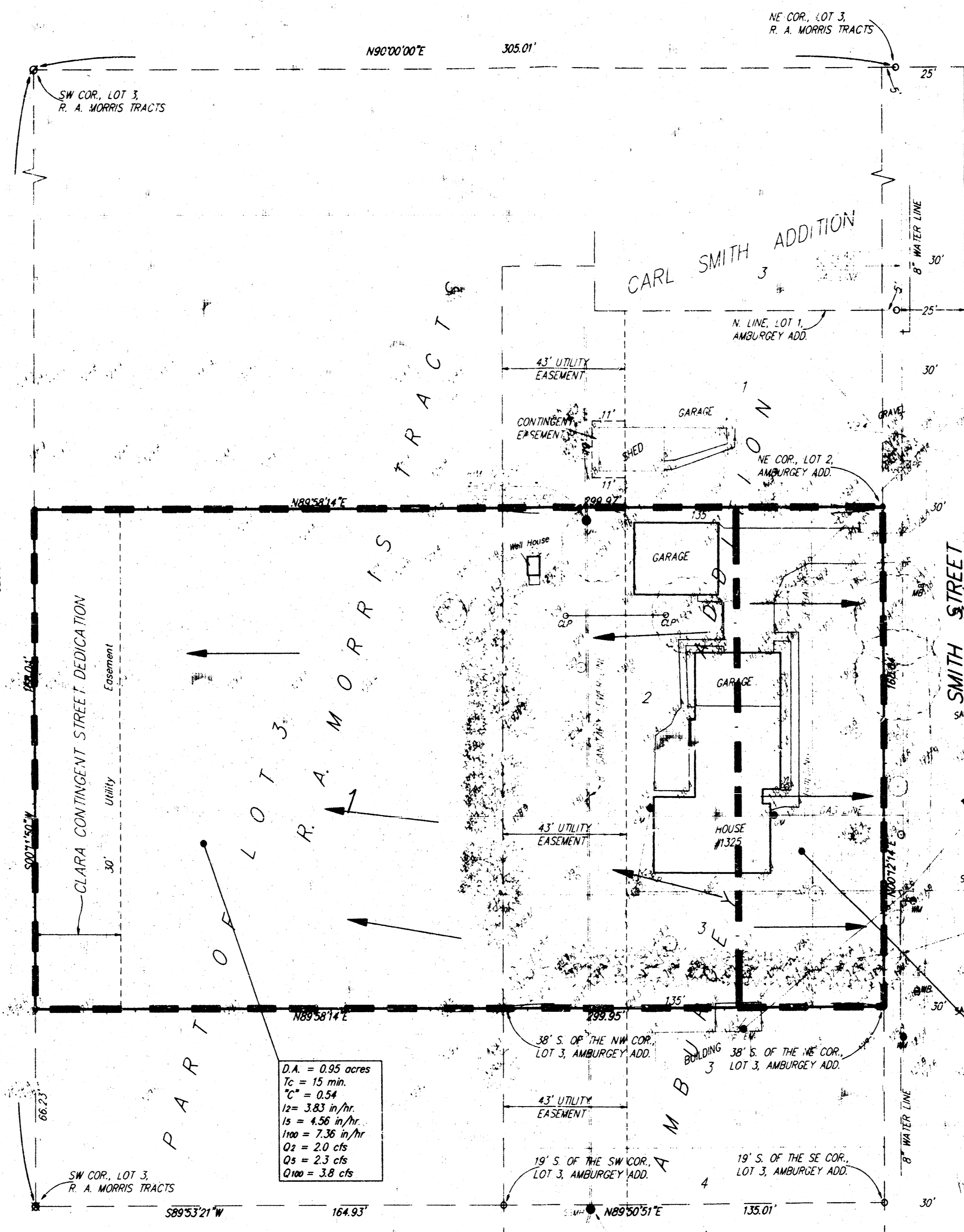


DRAINAGE PLAN

AMBURGEY 3RD ADDITION

WICHITA, SEDGWICK COUNTY, KANSAS



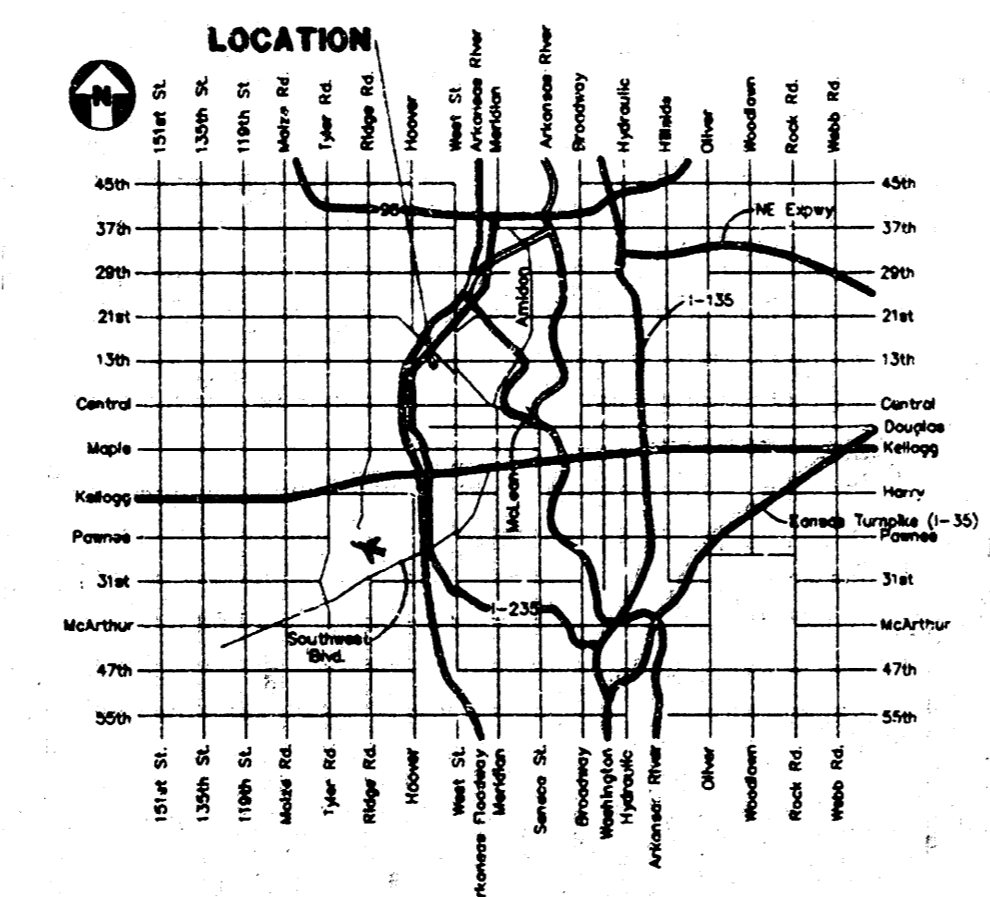
- LEGEND**
- #4 REBAR w/ "DAUGHMAN" CAP (SET)
 - 1/2" IRON (FOUND)
 - 3/4" IRON (FOUND)
 - 1" IRON (FOUND)
 - 3/4" IRON IN THIMBLE (FOUND)
-
- CP = Cable TV Pedestal
 - EM = Electric Meter
 - GM = Gas Meter
 - LP = Light Pole
 - MB = Mail Box
 - P = Pine Tree
 - PP = Power Pole
 - GLP = Clothes Line Pole
 - SSM = Sanitary Sewer Manhole
 - T = Tree
 - MM = Water Meter
 - FL = Yard Light

OWNER:
 JACK AND PATRICIA AMBURGEY
 1325 SMITH
 WICHITA, KANSAS 67212
 (316) 942-2352

BENCHMARK:
 CITY OF WICHITA DISC - C CURTIS &
 SOUTH OF I-235 E/W FENCE
 ELEV. = 129.15 CITY DATUM

D.A. = 0.05 acres
 Tc = 15 min.
 Cc = 0.54
 I₁₀ = 3.83 in/hr.
 I₅ = 4.56 in/hr.
 I₁₀₀ = 7.36 in/hr.
 Q₁₀ = 2.0 cfs
 Q₅ = 2.3 cfs
 Q₁₀₀ = 3.8 cfs

D.A. = 0.2 acres
 Tc = 15 min.
 Cc = 0.54
 I₁₀ = 3.83 in/hr.
 I₅ = 4.56 in/hr.
 I₁₀₀ = 7.36 in/hr.
 Q₁₀ = 0.4 cfs
 Q₅ = 0.5 cfs
 Q₁₀₀ = 0.8 cfs



VICINITY MAP

3 MARCH 1998

BAUGHMAN COMPANY P. A.
 ENGINEERING, SURVEYING, & PLANNING
 315 E. 15th St., Wichita, Kansas 67202
 Phone: (316) 261-1111 Fax: (316) 261-1112