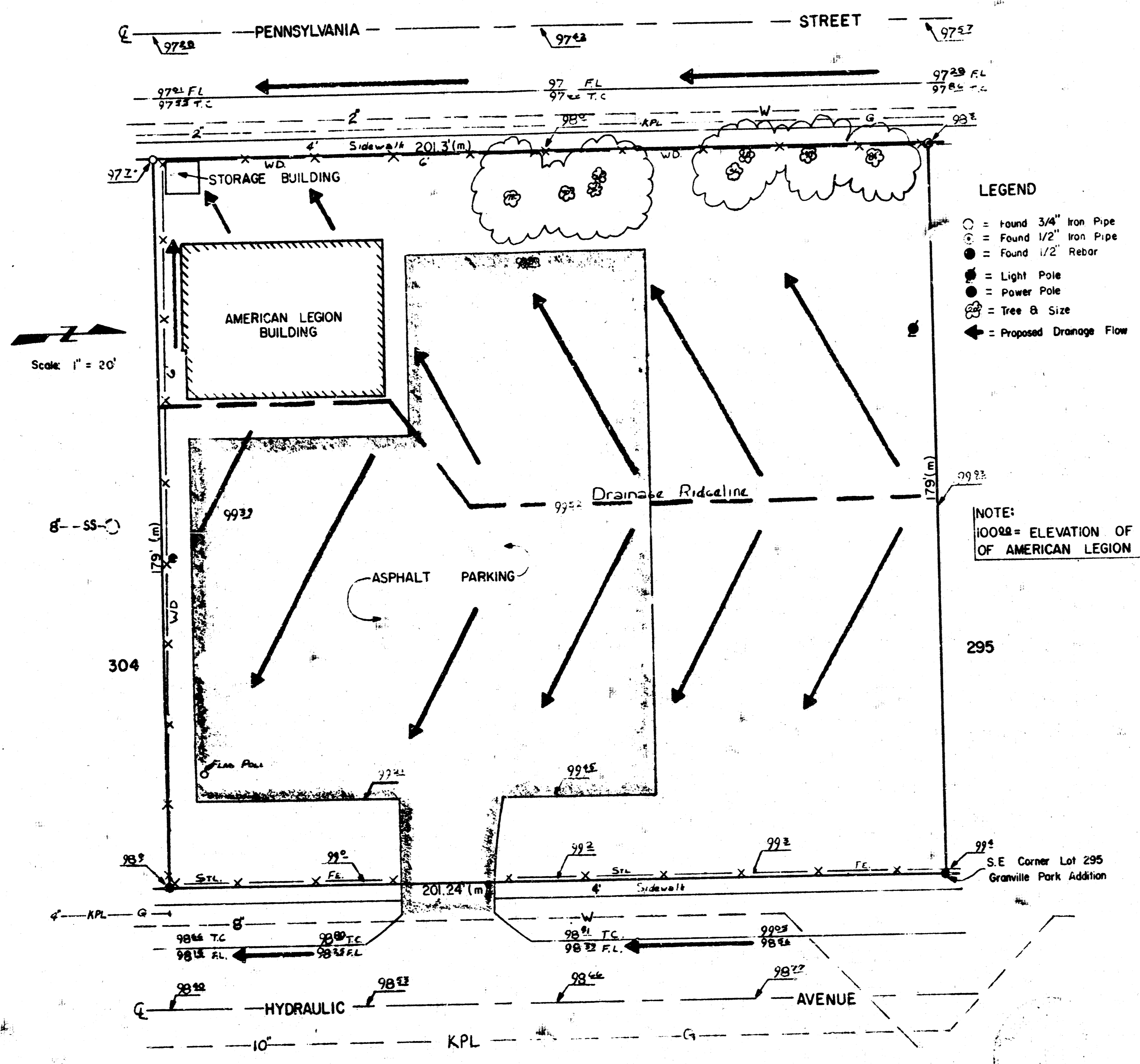


POST NO. 273
 AMERICAN LEGION ADDITION
 (Drainage)

POST # 273
 AMERICAN LEGION ADDITION
 WICHITA, SEDGWICK COUNTY, KANSAS



- LEGEND
- = Found 3/4" Iron Pipe
 - = Found 1/2" Iron Pipe
 - = Found 1/2" Rebar
 - = Light Pole
 - = Power Pole
 - ⊗ = Tree & Size
 - ← = Proposed Drainage Flow

NOTE:
 1000± = ELEVATION OF FOUNDATION
 OF AMERICAN LEGION BUILDING

AMERICAN LEGION WICHITA, KANSAS	
DRAINAGE PLAN AMERICAN LEGION ADDITION 1325 N. HYDRAULIC	
CASTLE & ASSOCIATES ENGINEERS WICHITA, KANSAS	DSG TDS OR TDS CH APP
DATE JUNE 1987	DWG FILE NO 8737-C-50,038 SHEET NO 1 OF 1

Scale: 1" = 20'

