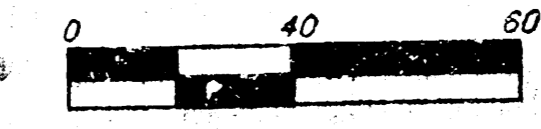


# DRAINAGE PLAN AMIDON PLAZA ADDITION WICHITA, SEDGWICK COUNTY, KANSAS

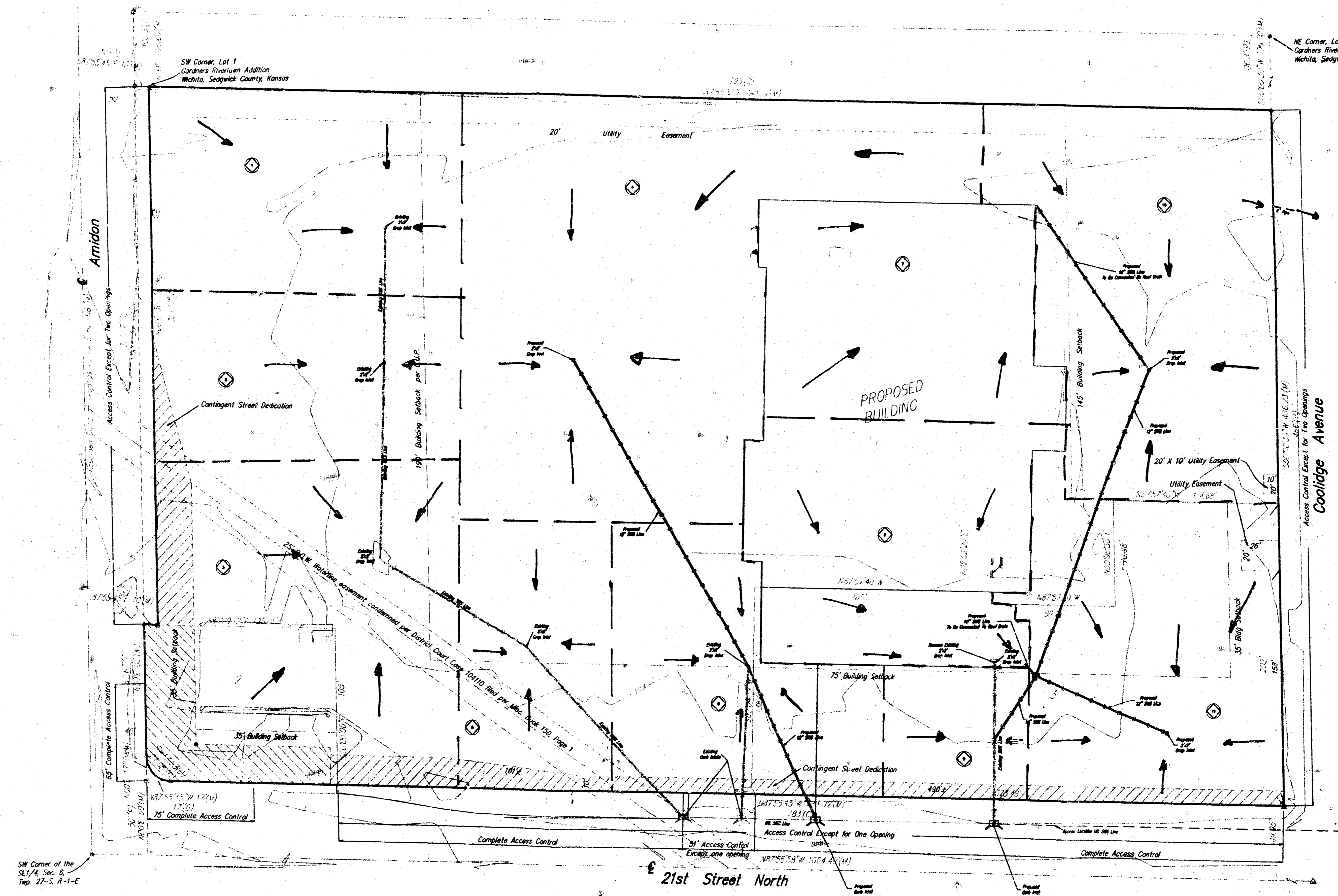
- (P) = Potted
- (M) = Measured
- (D) = Described
- = 3/4" Iron Pipe Found
- ⊙ = #4 Rebar Rubber Foot
- ⊞ = 2" x 1/2" Gal. Slat
- △ = #4 Baughman Rebar Set
- △ = 1 1/2" Iron Pipe Found
- ⊞ = Thimble Found



Note: See Community Unit Plan 02-76, for additional Building Setbacks.

**BENCHMARK:**  
City of Wichita Disc on SE. corner of the Little Arkansas River bridge located on 21st Street N.  
Elev. = 1313.71

Drainage Area	Area (acres)	C <sub>2</sub>	C <sub>100</sub>	I <sub>2</sub> (in/hr)	I <sub>100</sub> (in/hr)	Q <sub>2</sub> (cfs)	Q <sub>100</sub> (cfs)
1	.8	.9	.9	4.56	7.37	3.3	5.3
2	.6	.9	.9	4.56	7.37	2.5	4.0
3	1.1	.9	.9	4.56	7.37	4.5	7.3
4	1.6	.9	.9	4.56	7.37	6.6	10.6
5	.4	.9	.9	4.56	7.37	2.7	1.6
6	.5	.9	.9	4.56	7.37	2.1	3.3
7	.6	.9	.9	4.56	7.37	2.5	4.0
8	.8	.9	.9	4.56	7.37	3.3	5.3
9	.2	.9	.9	4.56	7.37	.8	1.3
10	1.0	.9	.9	4.56	7.37	4.1	6.6
11	.9	.9	.9	4.56	7.37	3.7	6.0



SW Corner of the S1/4, Sec. 8, Twp. 27-S, R-1-E

**BAUGHMAN COMPANY**  
 ENGINEERING & SURVEYING  
 314/262-7875 • 700 S.W. 4th • WICHITA, KANSAS 67202

Detail and Pipe Sizes Per  
Drainage Plan By BSW Architects  
Applied on 8/30/06