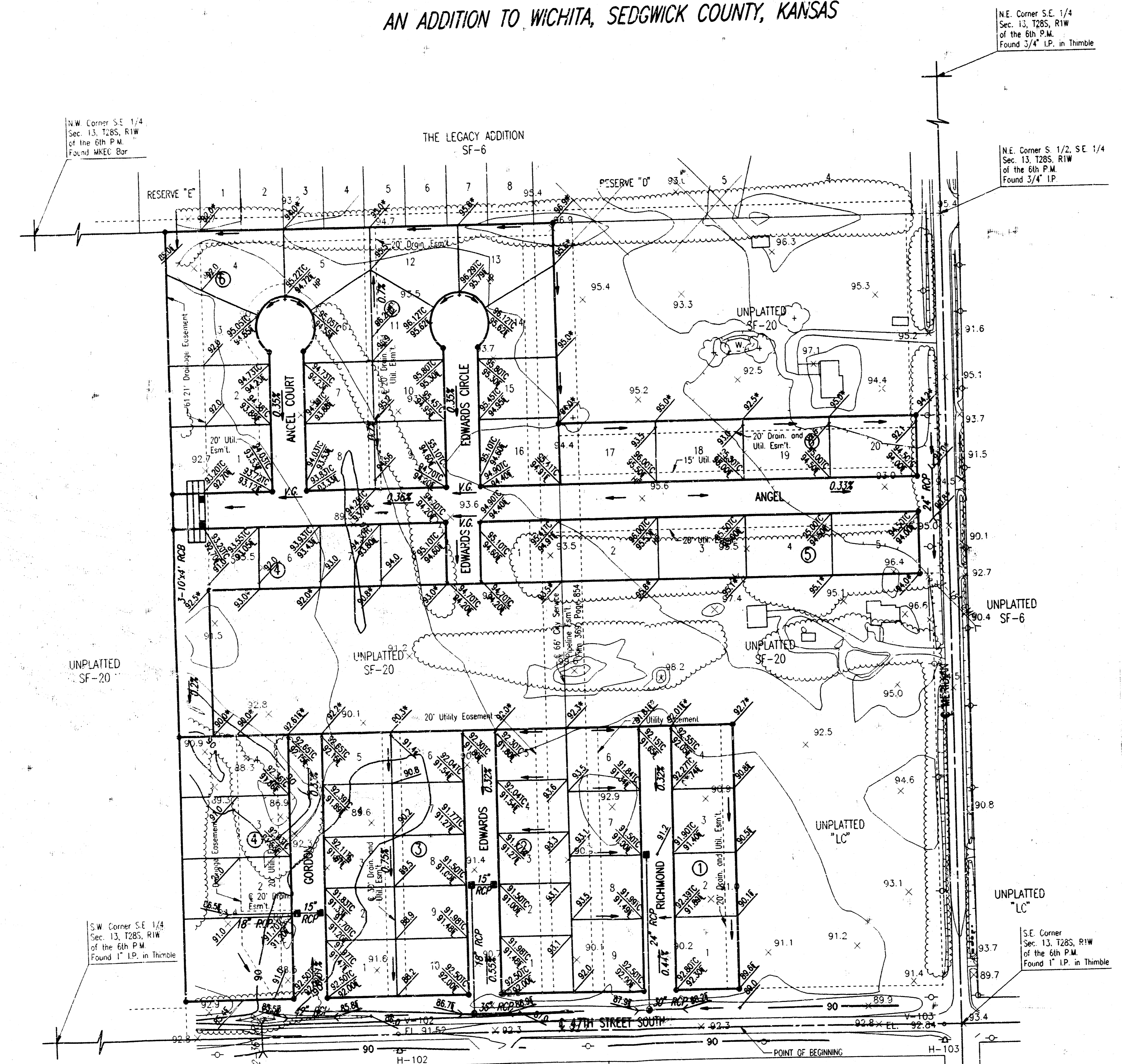


FOUR CORNER LOT GRADING
ANGEL ACRES
 AN ADDITION TO WICHITA, SEDGWICK COUNTY, KANSAS



NE Corner S.E. 1/4
 Sec. 13, T28S, R1W
 of the 6th P.M.
 Found 3/4" I.P. in Thimble

NW Corner S.E. 1/4
 Sec. 13, T28S, R1W
 of the 6th P.M.
 Found 1/4" I.P. in Thimble

NE Corner S. 1/2, SE 1/4
 Sec. 13, T28S, R1W
 of the 6th P.M.
 Found 3/4" I.P.

SW Corner S.E. 1/4
 Sec. 13, T28S, R1W
 of the 6th P.M.
 Found 1" I.P. in Thimble



SCALE: 1"=100'
 ● = IRON SET

B.M. - CITY OF WICHITA STANDARD DISC. 44" NORTH AND 30" EAST
 OF THE INTERSECTION OF THE CENTERLINES OF MERIDIAN
 AND 47TH STREET SOUTH. ELEV.=91.777 CITY DATUM

LEGEND

- SPOT ELEVATION
- HIGH POINT ELEVATION
- MATCH EXISTING ELEVATION
- TOP OF CURB ELEVATION
- FLOW LINE ELEVATION
- FLOW DIRECTION
- MINIMUM PAD ELEVATION: LOTS 1-4, BLOCK 1 95.0 CITY DATUM
- (MINIMUM OPENING) LOTS 1-9, BLOCK 2
- LOTS 1-10, BLOCK 3
- LOTS 1-8, BLOCK 4
- LOT 1, BLOCK 5
- LOTS 1-16, BLOCK 6
- LOTS 2-5, BLOCK 5 92.0 CITY DATUM
- LOTS 13-20, BLOCK 6

Angel Acres ADDN
APPROVED
DRAINAGE PLAN

DSNR: ACR OPER. S&D SCALE: 1"=100.00
 01/19/98 968686 VCCORNER 02-18-1999 01:50:26 pm