

DRAINAGE PLAN

ANGEL ACRES 2ND ADDITION

TO WICHITA, SEDGWICK COUNTY, KANSAS

- LEGEND**
- SA BASIN IDENTIFIER
 - MINOR BASIN BOUNDARY
 - MAJOR BASIN BOUNDARY
 - ◻ MAJOR STORM WATER OVERFLOW (Q100)
 - MINOR STORM WATER FLOW (Q10)
 - STORM SEWER AND INLET
 - STORM SEWER AND MANHOLE
 - ⊖ STORM SEWER STRUCTURE NODE

- BENCHMARK**
- BM-1 C.O.W. Disc 74' N. and 44' E. of the center intersection of Seneca and 47th St. Elevation=187.43
 - BM-2 Railroad Spike in W. face of Power Pole 30± E. of E. of Seneca, 170± N. of Sunrise. Elevation=184.79
 - BM-3 Railroad Spike in N. face of Light Pole on S.E. Cor. of Sunrise and Osage. Elevation=185.32
 - BM-4 Railroad Spike in S. face of Light Pole on S.E. Cor. of Sunrise and Sycamore Ave. Elevation=186.16
 - BM-5 Railroad Spike in E. face of Light Pole on N.W. Cor. of Sunrise and Gold. Elevation=187.44

SCALE: 1"=100'

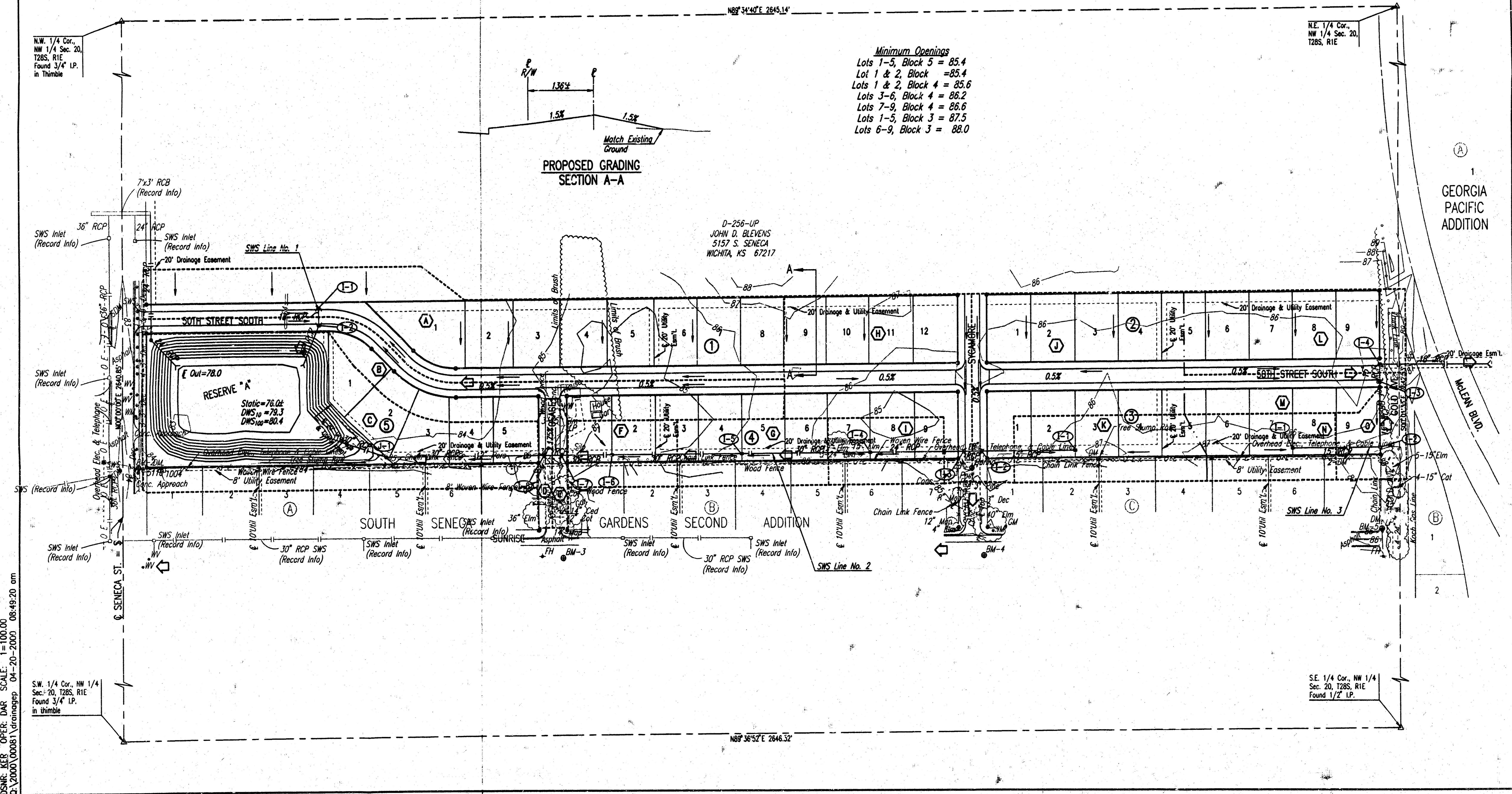
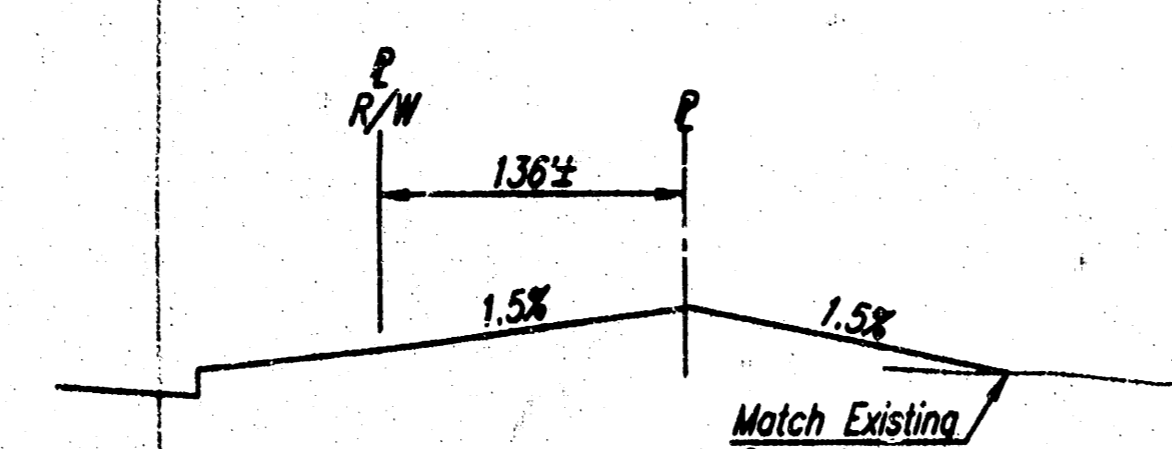
Add 100 to Elevations shown for City of Wichita Datum

Add 12.874 to Elevations shown for N.G.V.D.

Minimum Openings

- Lots 1-5, Block 5 = 85.4
- Lot 1 & 2, Block = 85.4
- Lots 1 & 2, Block 4 = 85.6
- Lots 3-6, Block 4 = 86.2
- Lots 7-9, Block 4 = 86.6
- Lots 1-5, Block 3 = 87.5
- Lots 6-9, Block 3 = 88.0

PROPOSED GRADING SECTION A-A



DSNR: KER OPER: DAR SCALE: 1"=100.00
 04/20/00 000081\drainagep 04-20-2000 08:49:20 am

S.W. 1/4 Cor., NW 1/4
 Sec. 20, T28S, R1E
 Found 3/4" LP.
 in thimble

S.E. 1/4 Cor., NW 1/4
 Sec. 20, T28S, R1E
 Found 1/2" LP.

GEORGIA
 PACIFIC
 ADDITION