

Scale: 1" = 60'-0"

Note change in Driveway slope from Arlington Place 1st Addition Lot Grading Plan.

NOTE

Proposed Garage floor elevations are shown on the plans. Variations from garage floor elevations must be approved by Baughman Company, P.A. Contractor to set finish floor elevation.

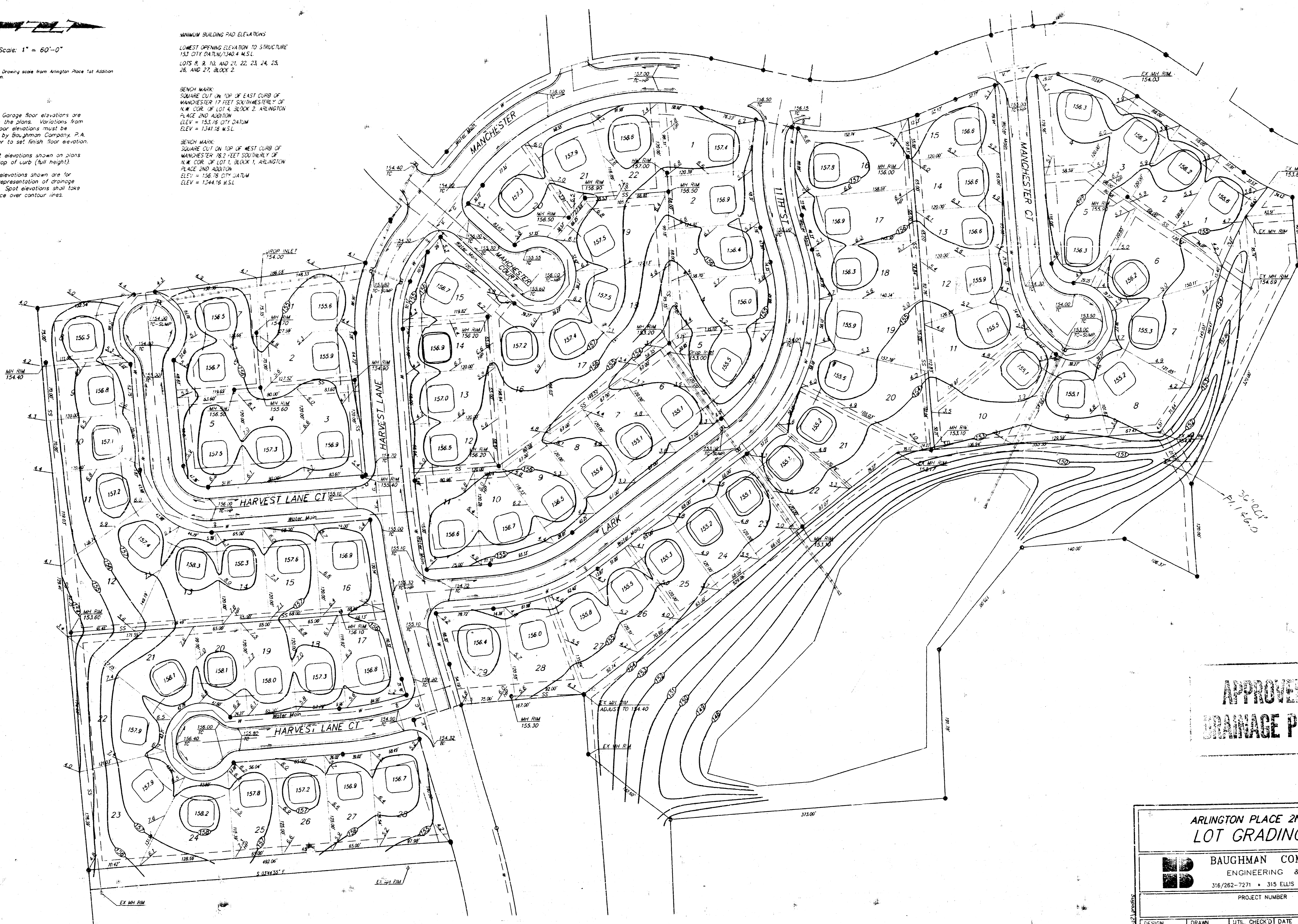
All street elevations shown on plans are for top of curb (full height).

Contour elevations shown are for graphic representation of drainage concept. Spot elevations shall take precedence over contour lines.

MINIMUM BUILDING PAD ELEVATIONS
LOWEST OPENING ELEVATION TO STRUCTURE
153 CITY DATUM/1540.4 M.S.L.
LOTS 8, 9, 10, AND 21, 22, 23, 24, 25,
26, AND 27, BLOCK 2.

BENCH MARK
SQUARE CUT ON 100' OF EAST CURB OF
MANCHESTER 17 FEET SOUTHWESTERLY OF
N.W. COR. OF LOT 4, BLOCK 2, ARLINGTON
PLACE 2ND ADDITION
ELEV. = 155.78 CITY DATUM
ELEV. = 1341.18 M.S.L.

BENCH MARK
SQUARE CUT ON TOP OF WEST CURB OF
MANCHESTER 78.2 FEET SOUTHWESTERLY OF
N.W. COR. OF LOT 1, BLOCK 1, ARLINGTON
PLACE 2ND ADDITION
ELEV. = 156.78 CITY DATUM
ELEV. = 1344.18 M.S.L.



APPROVED
DRAINAGE PLAN

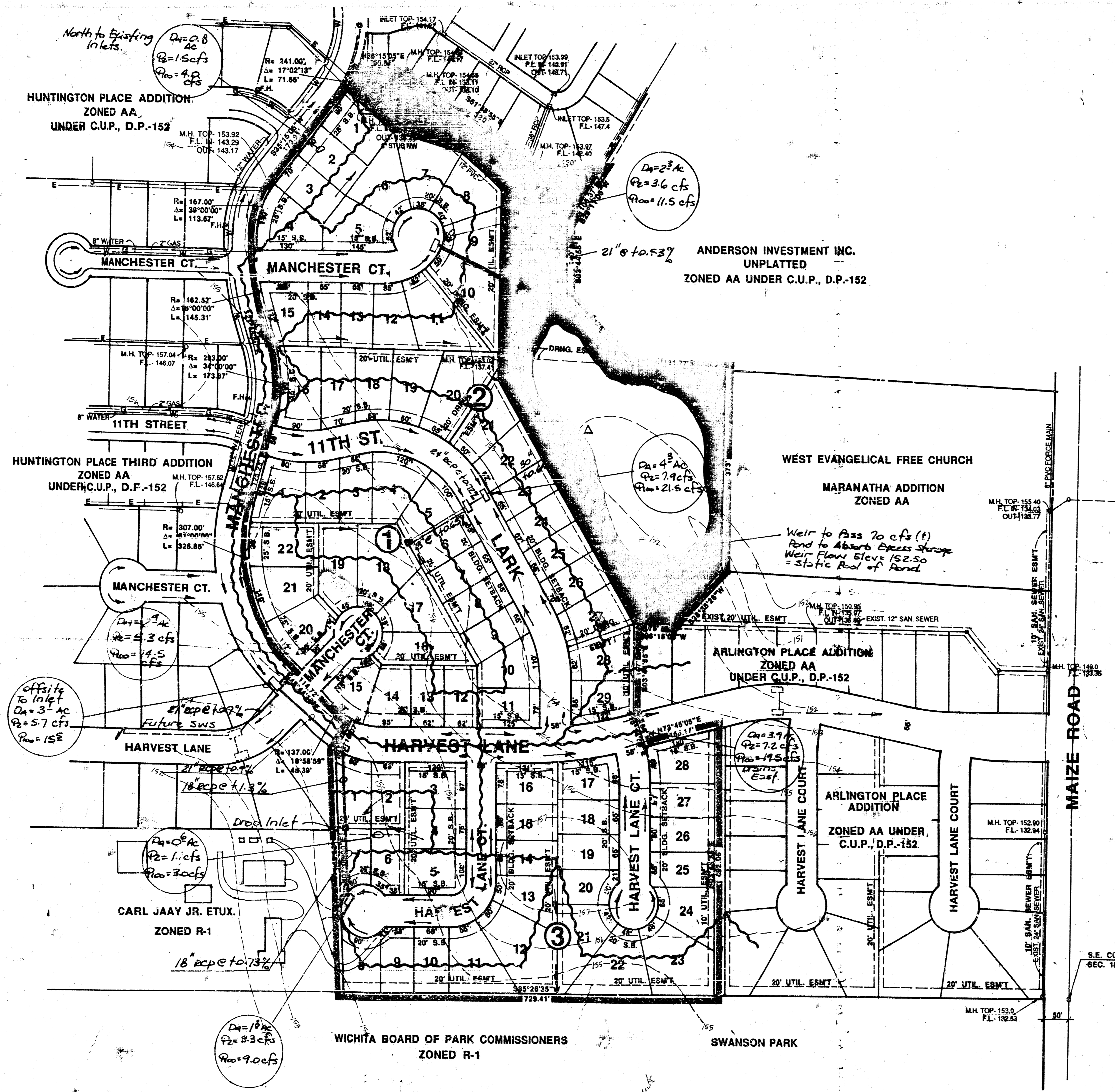
ARLINGTON PLACE 2ND ADDITION
LOT GRADING PLAN

BAUGHMAN COMPANY P. A.
ENGINEERING & SURVEYING
316/262-7271 • 315 ELLIS • WICHITA, KANSAS 67211

DESIGN	DRAWN	UTIL. CHECK'D	DATE	SCALE	SHEET
P.J.M.	P.J.M.		April 10, 92	1"=60'-0"	1 OF 1



BILL G. YUNG DESIGN
 412 E 20TH STREET NORTH
 WICHITA, KS. 67220
 316-963-5567

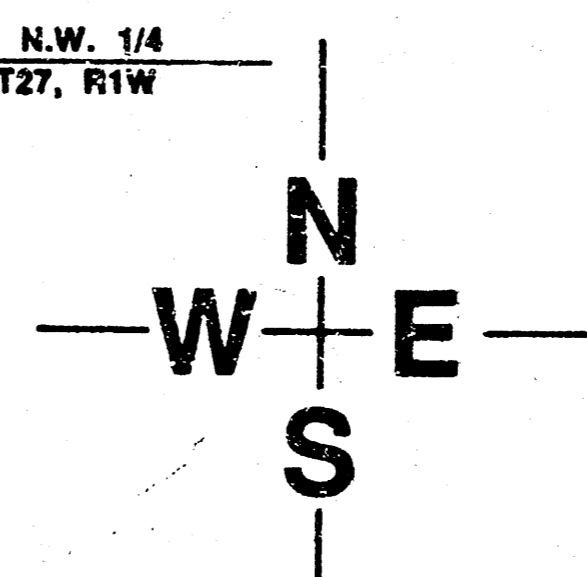


NOTES

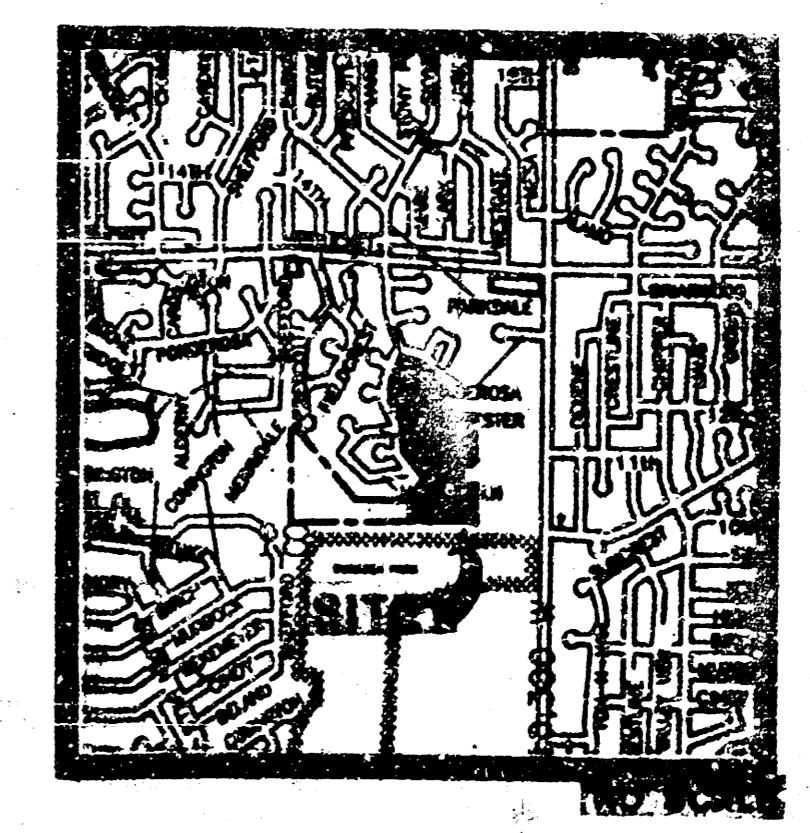
- 1) BENCHMARK: MAIZE AND 9TH STREET NORTH, CITY OF WICHITA DISC. 32' NORTH AND 38' EAST OF QUARTER SECTION CORNER. ELEV. 152.283 CITY DATUM.
- 2) ZONED AA UNDER HUNTINGTON PLACE C.U.P., D.P.-152.
- 3) DRAINAGE CONCEPT PLAN TO BE PREPARED BY BAUGHMAN COMPANY.
- 4) RESERVE "A" TO PERMIT DRAINAGE, DRAINAGE STRUCTURES, LAKES, LANDSCAPING, SIDEWALKS, GAZEBOS, RECREATION FACILITIES, AND UTILITIES CONFINED TO EASEMENTS.

Weir to Pass 70 cfs (t)
 Pond to Absorb Excess Storage
 Weir Flow Elevs 152.50
 = Static Pool of Pond

MAIZE ROAD



SCALE: 1"=100'
 CONTOUR INTERVAL= 1'



LOCATION MAP

DRAINAGE PLAN 10/1/91
PRELIMINARY PLAT

ARLINGTON PLACE 2ND ADDITION

OWNER: ARLINGTON PLACE INC., 1147 COACH HOUSE COURT, WICHITA, KANSAS 67235

DRAINAGE PLAN 10/1/91

DATE: JULY 24, 1991
 REV.

SHEET TITLE: PRELIMINARY PLAT

PROJECT: HUNTINGTON PLACE 2ND ADDITION

SHEET OF