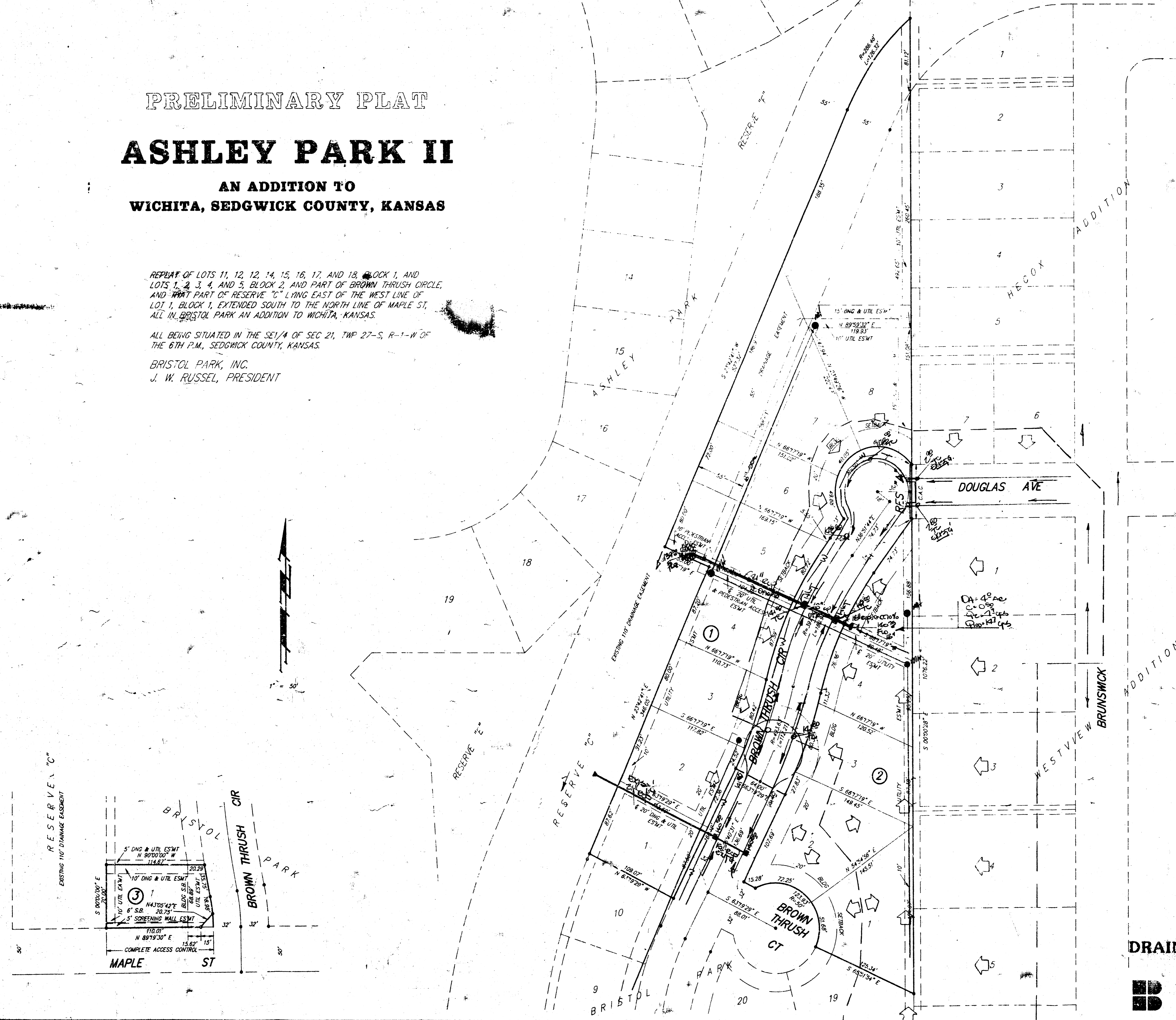


PRELIMINARY PLAT  
**ASHLEY PARK II**  
 AN ADDITION TO  
 WICHITA, SEDGWICK COUNTY, KANSAS

REPLAT OF LOTS 11, 12, 14, 15, 16, 17, AND 18, BLOCK 1, AND LOTS 1, 2, 3, 4, AND 5, BLOCK 2, AND PART OF BROWN THRUSH CIRCLE, AND PART OF RESERVE "C" LYING EAST OF THE WEST LINE OF LOT 1, BLOCK 1, EXTENDED SOUTH TO THE NORTH LINE OF MAPLE ST, ALL IN BRISTOL PARK AN ADDITION TO WICHITA, KANSAS.

ALL BEING SITUATED IN THE SE 1/4 OF SEC 21, TWP 27-S, R-1-W OF THE 6TH P.M., SEDGWICK COUNTY, KANSAS.

BRISTOL PARK, INC.  
 J. W. RUSSEL, PRESIDENT



**APPROVED  
 DRAINAGE PLAN**

- Note
1. Remove existing cul de sac
  2. Remove existing water line in cul de sac
  3. Extend water line to north
  4. Extend street to incl. cul de sac.
  5. Construct storm sewer w. cul de sac.
  6. Construct turn around & fire access to Douglas from cul de sac.

**DRAINAGE & UTILITY PLAN**

**BAUGHMAN COMPANY P. A.**  
 ENGINEERING & SURVEYING  
 316/282-7271 • 315 ELLIS • WICHITA, KANSAS 67211 26 JUNE 1991

FILMED FROM THE BEST AVAILABLE COPY.....