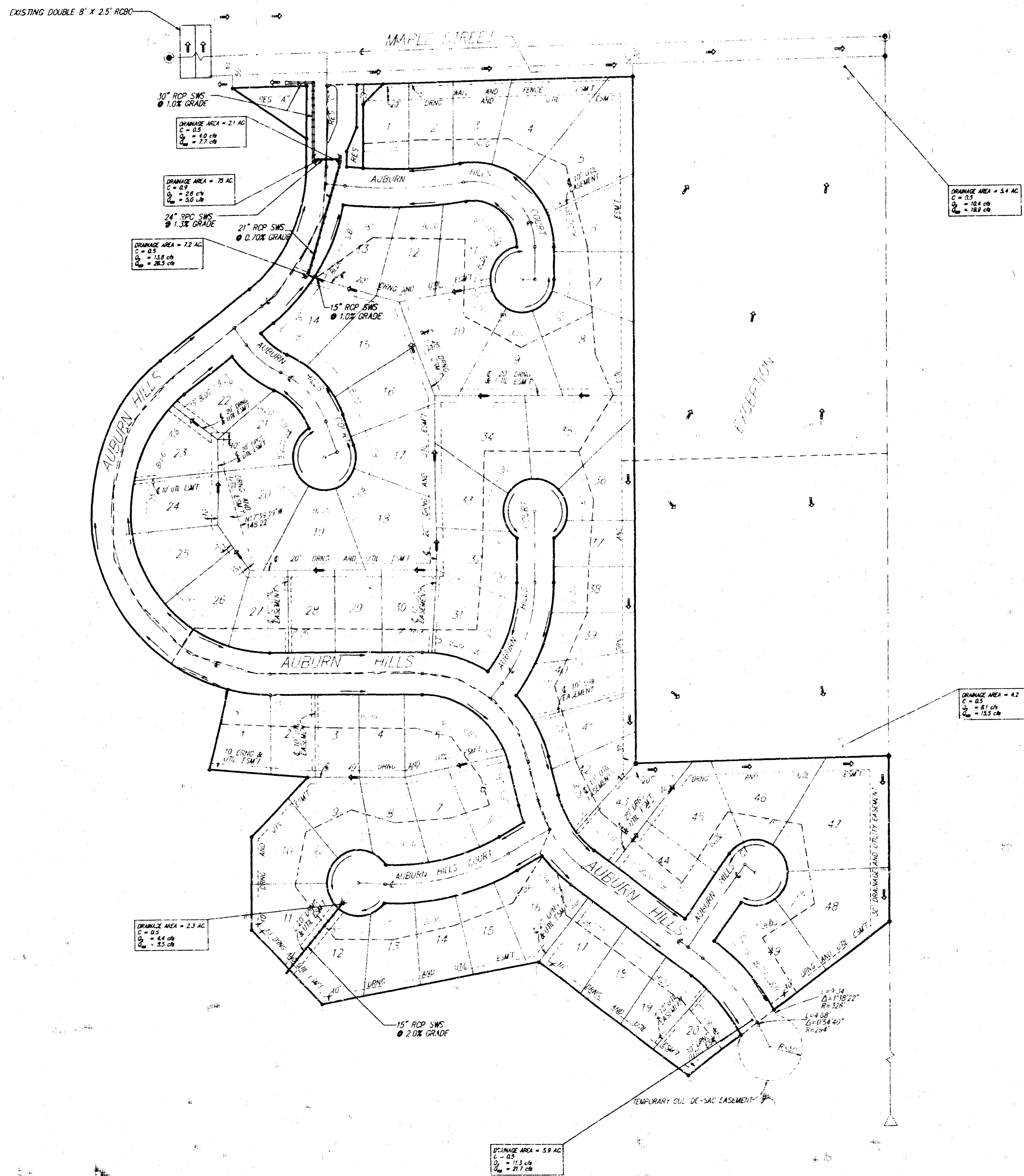


# AUBURN HILLS ADDITION

WICHITA, SEDGWICK COUNTY, KANSAS



- ⊙ = 3/4" IRON PIPE (FOUND)
- ⊗ = 1/2" IRON PIPE (FOUND)
- = #4 REBAR-BAUGHMAN CO. (SET)
- △ = 4"x4" STONE (FOUND)

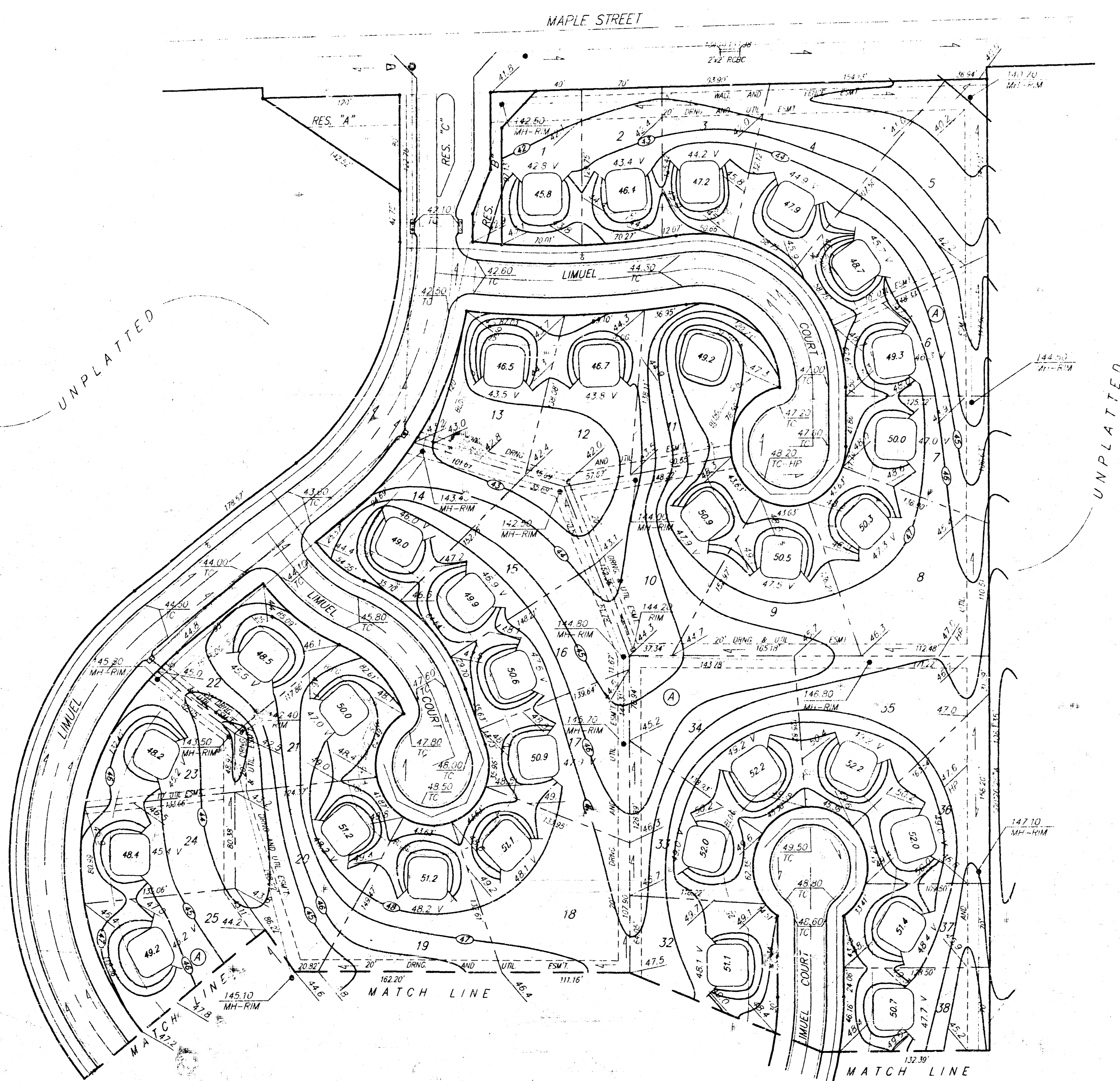
<b>AUBURN HILLS ADDITION DRAINAGE PLAN</b>				
<b>BAUGHMAN COMPANY P. A.</b> ENGINEERING & SURVEYING 116/262-7271 • 315 ELLIS • WICHITA, KANSAS 67211				
PROJECT NUMBER				
DESIGN	DRAWN	UTIL. CHECK'D	DATE	SCALE
JES	JES		3-14-14	1"=100'
				SHEET <b>1</b> OF <b>1</b>

1/2010/BAUGHMAN CO. P.A.

**Benchmark:**  
 "□" N.W. Corner of Headwall on  
 the R.C.B.C. Crossing Maple 825±  
 West of E of Forestlaw  
 Elev. = 141.00 City Datum

City Of Wichita Bench Mark located  
 on the headwall at the NE Corner  
 of the intersection of 135th St. W.  
 and Maple.  
 Elev. = 150.20 City Datum

City Of Wichita Bench Mark located  
 34' East of the E of 135th St. W.  
 1/2 mile South of Maple.  
 Elev. = 156.63 City Datum



**NOTE:**  
 Proposed minimum garage floor  
 elevations are shown on plans.  
 Contractor to set finish floor elevation.  
 All street elevations shown on plans  
 are for top of curb (full height).  
 Contour elevations shown are for  
 graphic representation of drainage  
 concept. Spot elevations shall take  
 precedence over contour lines.

**APPROVED  
 DRAINAGE PLAN**

AUBURN HILLS ADDITION  
**LOT GRADING PLAN**

**BAUGHMAN COMPANY P.A.**  
 ENGINEERING & SURVEYING

PROJECT NUMBER: \_\_\_\_\_ SHEET: **1**  
 OF **2**

DESIGN: _____	DRAWN: _____	APPROVED: _____	DATE: 6-7-94	SCALE: 1"=50'
---------------	--------------	-----------------	--------------	---------------

