

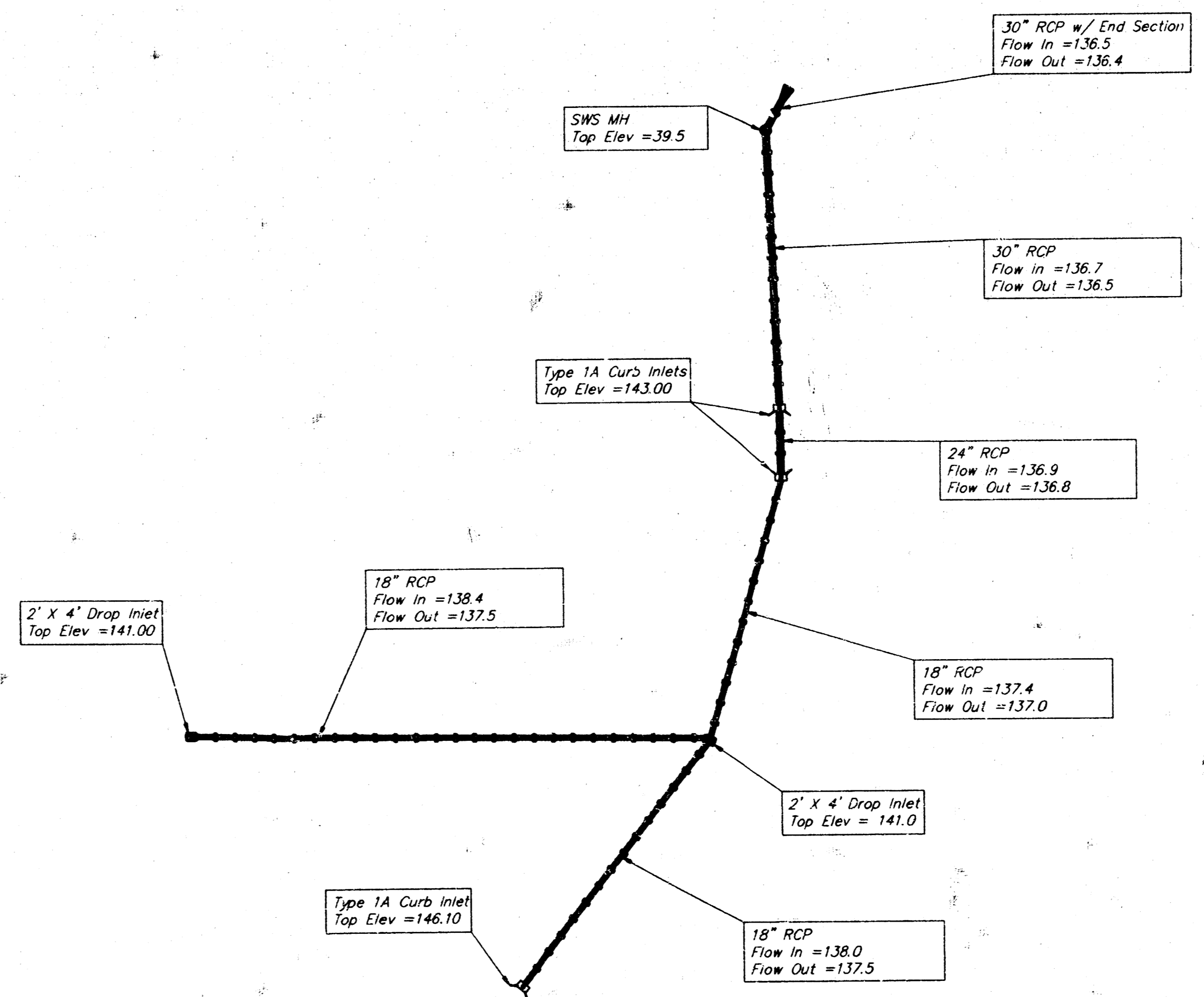
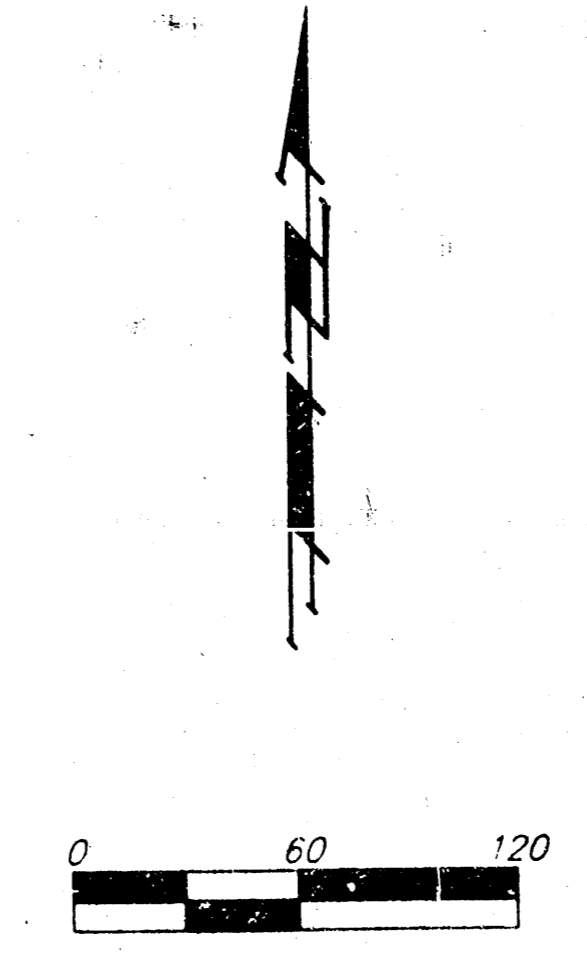
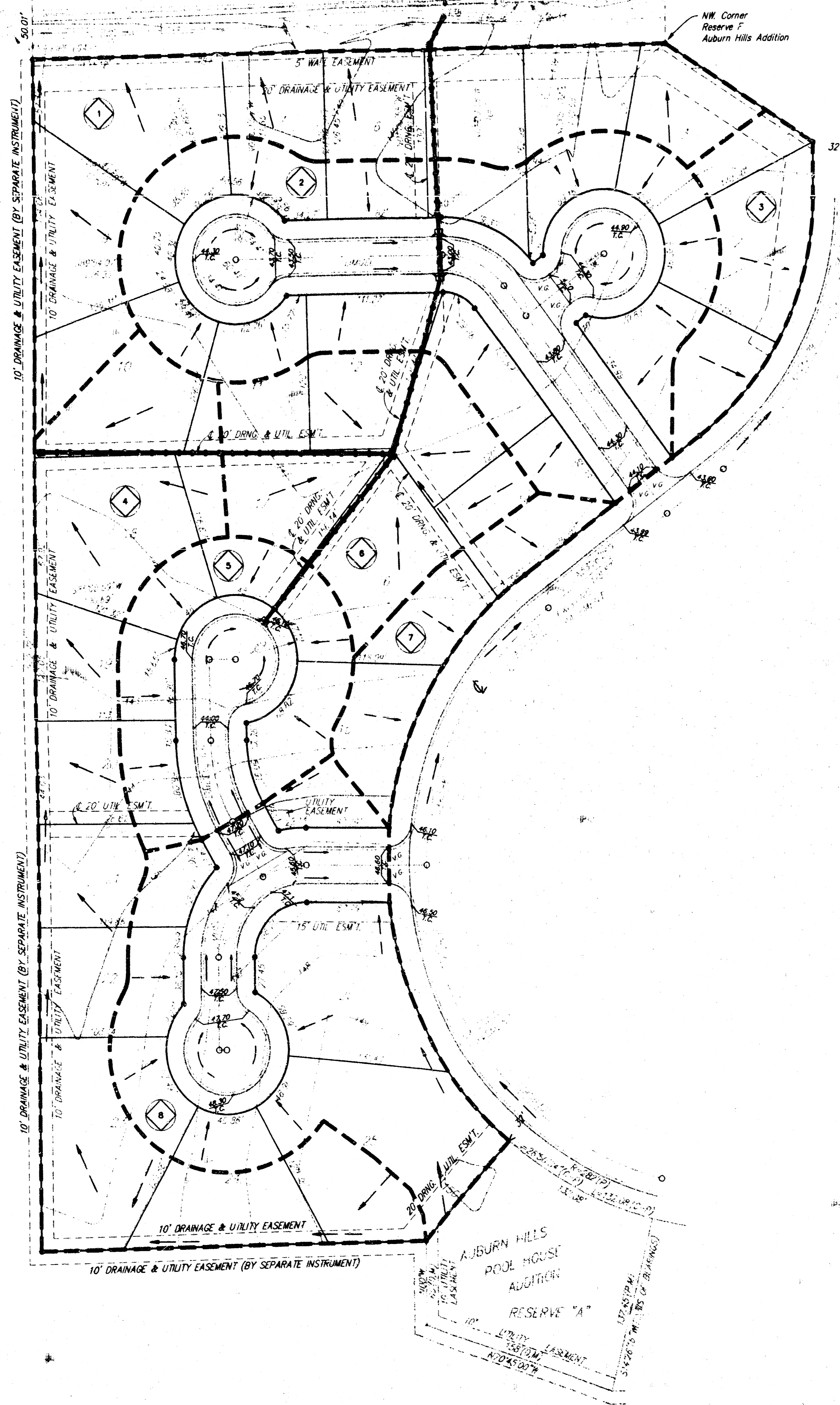
DRAINAGE PLAN

AUBURN HILLS 3RD ADDITION

WICHITA, SEDGWICK COUNTY, KANSAS

NW Corner
NW/4 25-27-2E

NE Corner
NW/4 25-27-2E



Drainage Area	Area (acres)	C _s	C _w	T _s (min.)	I _s (in/hr)	I _w (in/hr)	Q _s (cfs)	Q _w (cfs)
1	1.4	0.48	0.67	15	3.83	7.37	2.6	6.9
2	2.1	0.48	0.67	15	3.83	7.37	3.9	10.4
3	0.4	0.48	0.67	15	3.83	7.37	0.7	2.0
4	1.7	0.48	0.67	15	3.83	7.37	3.1	8.4
5	0.8	0.48	0.67	15	3.83	7.37	1.5	3.9
6	0.8	0.48	0.67	15	3.83	7.37	1.5	3.9
7	0.4	0.48	0.67	15	3.83	7.37	0.7	2.0
8	1.6	0.48	0.67	15	3.83	7.37	2.9	7.9

NOTE: The proposed drainage plan provided herein is a generally defined plan to follow for design. It is recognized and assumed that upon the final design of street and storm sewer improvements within this plot that the designer will modify or alter the general drainage plan as necessary in order to implement the installation of the improvements to obtain the most economical design and construction possible.

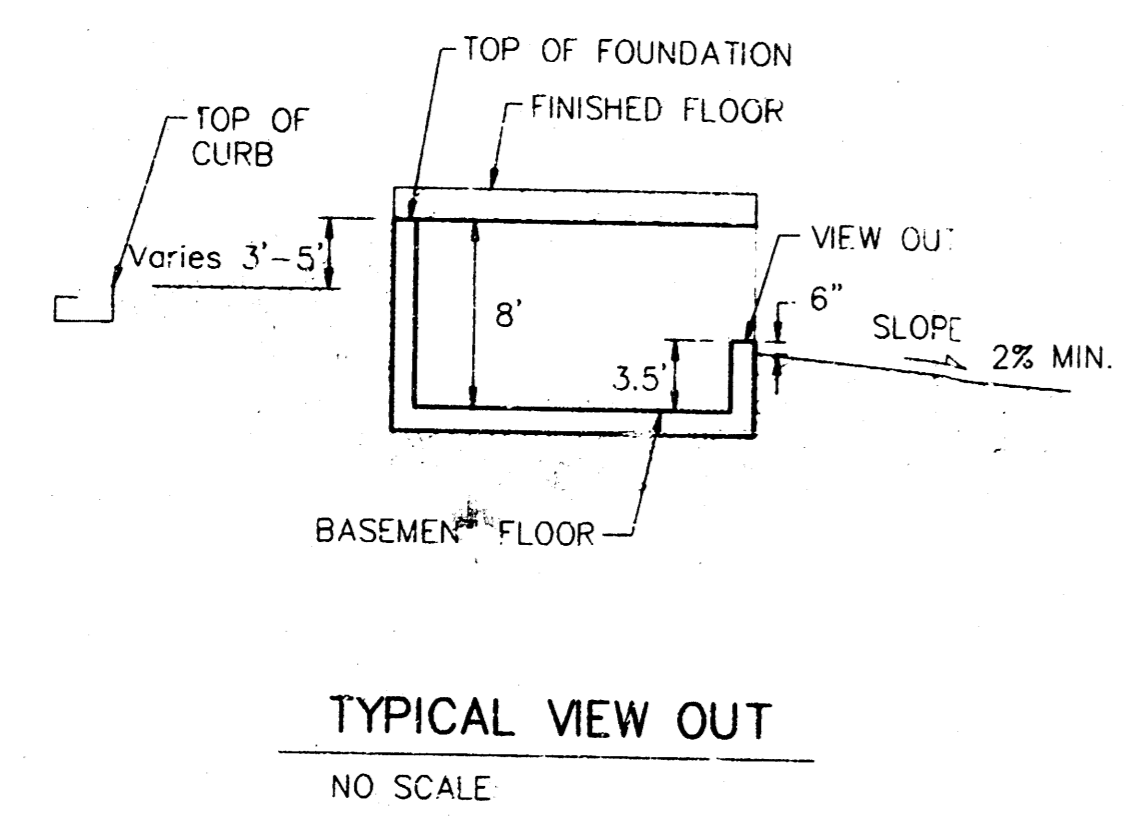
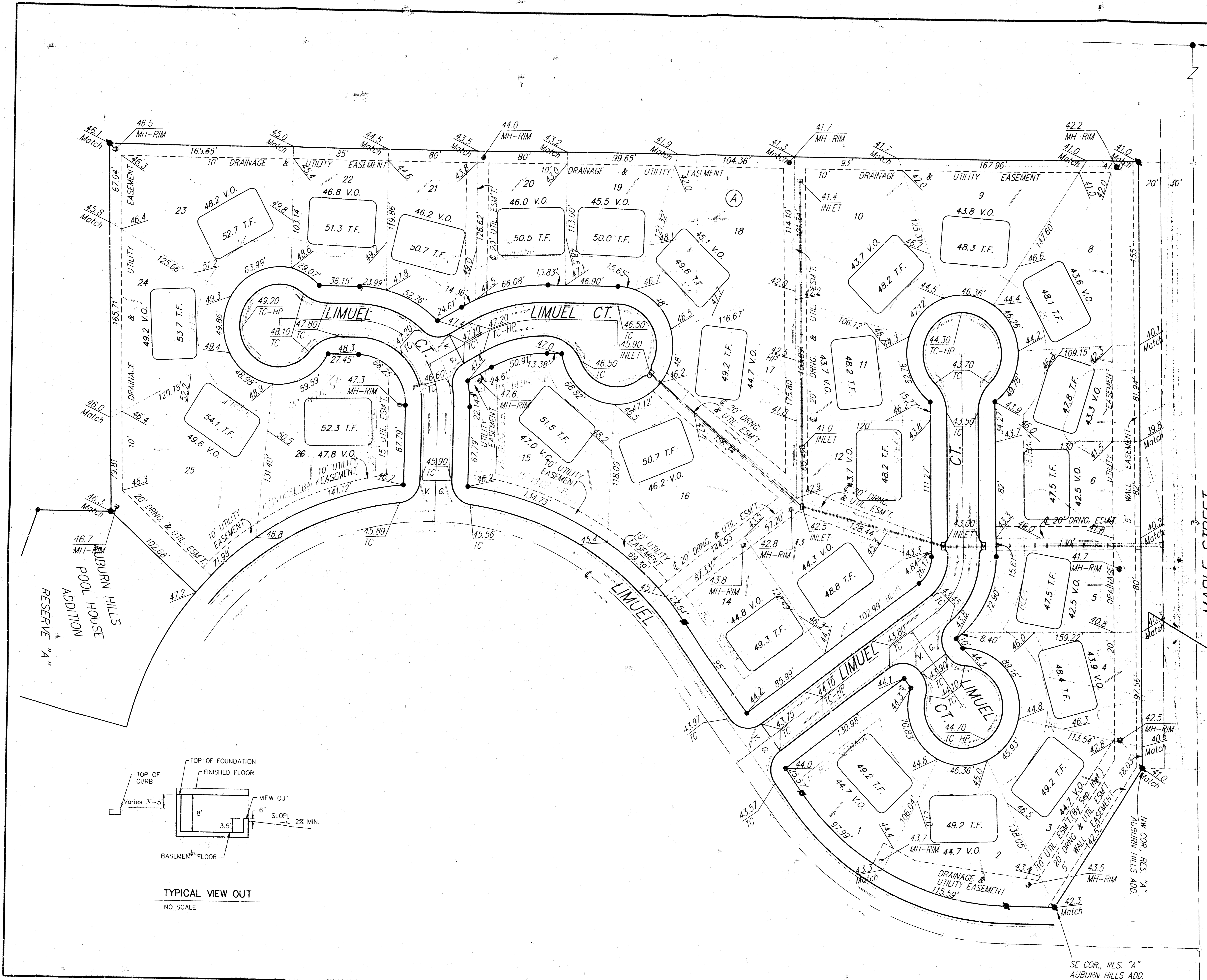
May 2, 1997

NW COR., NW1/4,
SEC. 25, T27S, R2W



Scale: 1" = 40'
• = Iron

NOTE:
Proposed top of foundation elevations are shown in **blu**. Contractor to set finish floor elevation.
All street elevations shown on plans are for top of curb (full height).
View-out elevations are denoted as **XXX V.O.**
Walk-out elevations are denoted as **XXX W.O.**



SE COR., RES. "A"
AUBURN HILLS ADD.

Revised 1-28-98

**AUBURN HILLS 3RD ADDITION
LOT GRADING PLAN**

BAUGHMAN COMPANY P. A.
ENGINEERING, SURVEYING, & PLANNING
316-262-2271 • 316-262-2272 • WICHITA, KANSAS 67211

PROJECT NUMBER					SHEET	
DESIGN	DRAWN	APPROVED	DATE	SCALE	OF	
BP	MC	BP	JAN. 1998	1"=40'	1	

AUBURN HILLS 3RD ADDITION