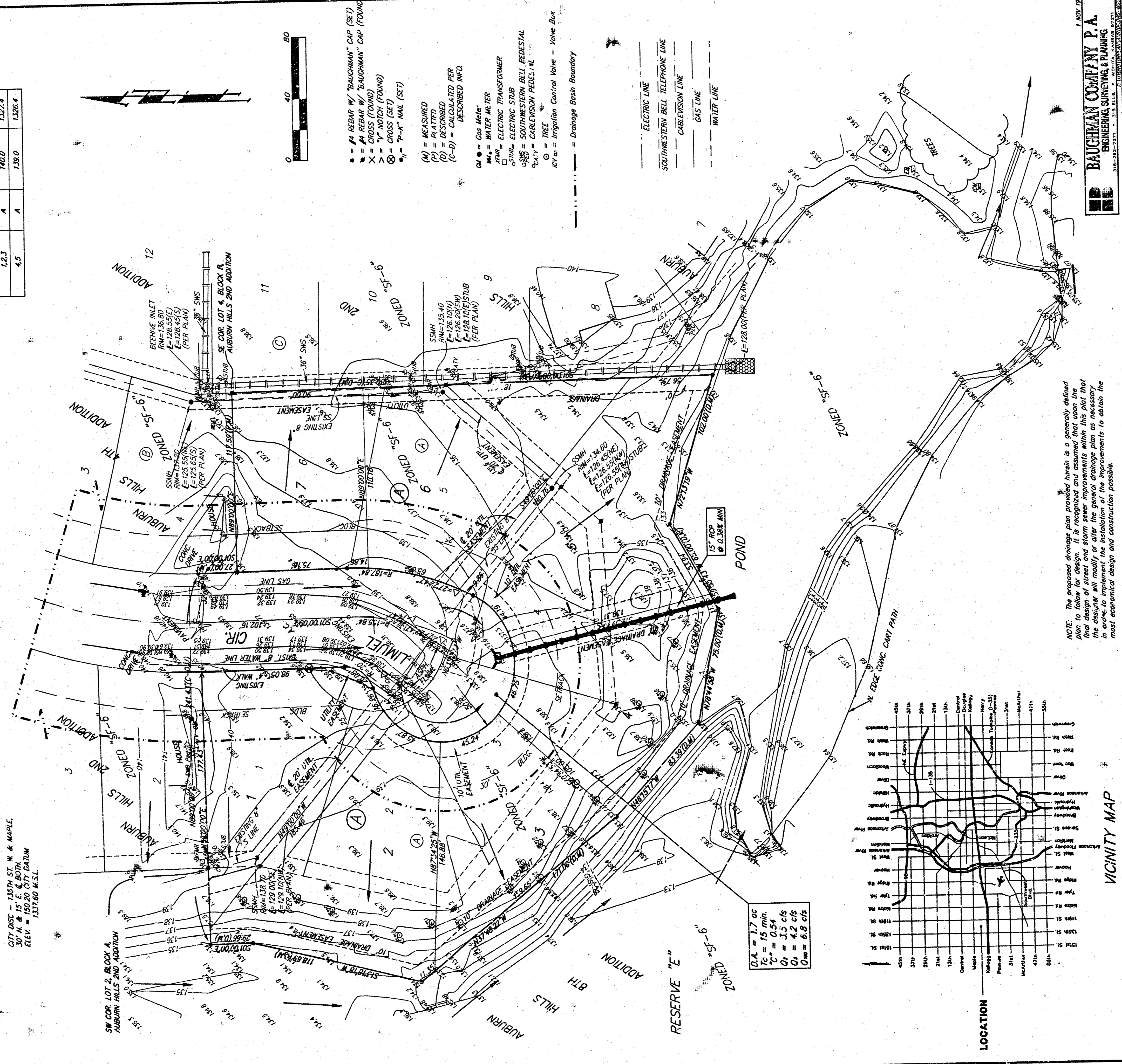


DRAINAGE PLAN AUBURN HILLS 10TH ADDITION WICHITA, SEDGWICK COUNTY, KANSAS

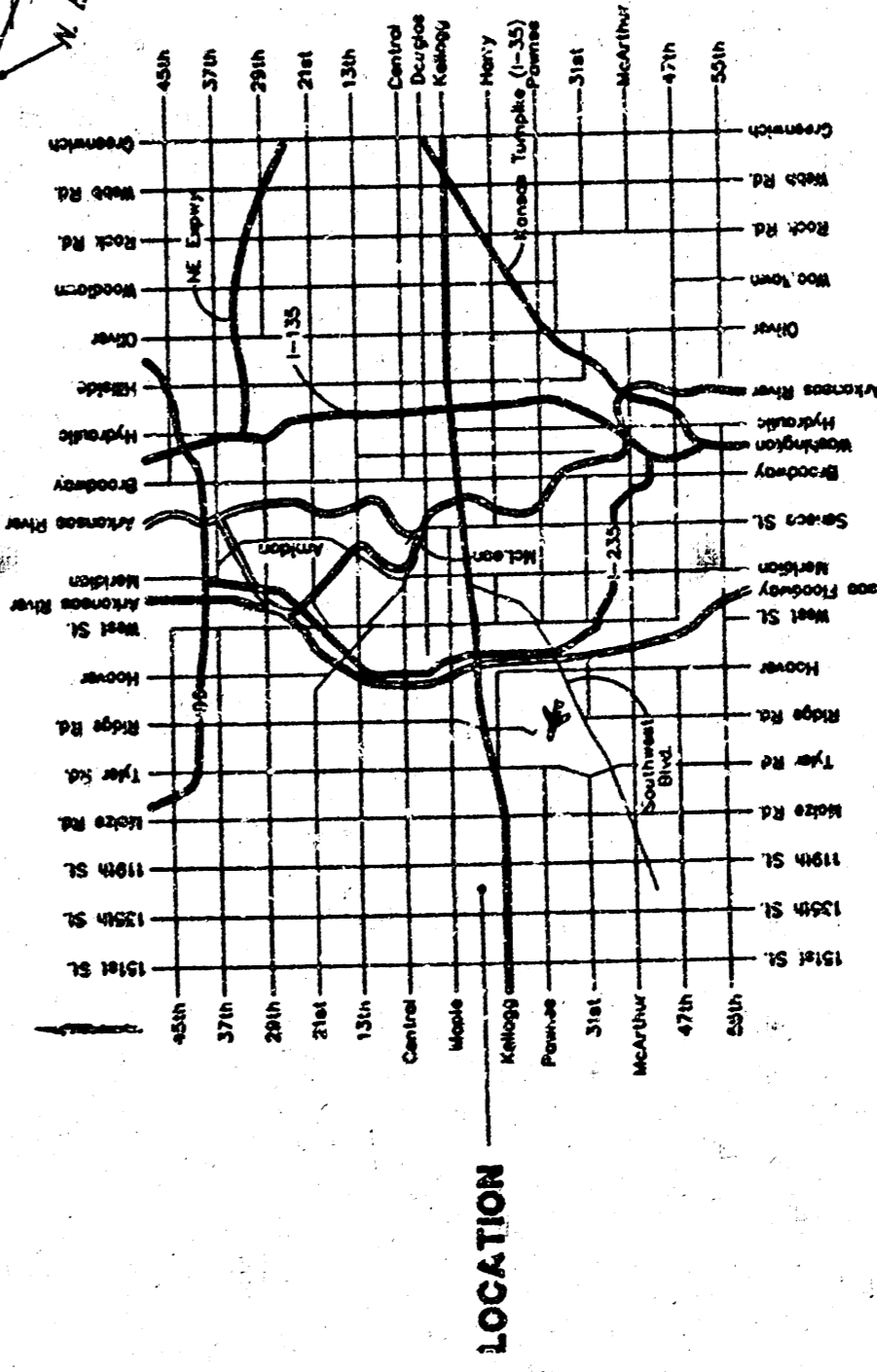
NOTE: THIS EASEMENT GRANTED TO THE CITY OF WICHITA (FILED IN S.S. PAGE 147) OVER THE EAST 1000 FEET OF THE NW 1/4 OF SEC. 25, TWP. 27-S, R-1-W, EXCEPT THE NORTH 133.25 FEET THEREOF.

MINIMUM BUILDING AND ELEVATION FOR LOWEST OPENING TO THE STRUCTURES			
LOT	BLOCK	CITY DATUM	M.S.L.
4, 5	A	140.0	1327.4
	A	139.0	1328.4

BRANCH MARKS: SW COR. OF B.Y.C. & T.Y.H. OF T-27-S, R-1-W CITY DATUM ELEV. = 124.03 M.S.L.
 SW COR. OF B.Y.C. & T.Y.H. OF T-27-S, R-1-W CITY DATUM ELEV. = 124.03 M.S.L.
 SW COR. OF B.Y.C. & T.Y.H. OF T-27-S, R-1-W CITY DATUM ELEV. = 124.03 M.S.L.



D.A. = 1.7 cc
V ₁ = 1.0 cfm
V ₂ = 1.0 cfm
V ₃ = 3.5 cfs
V ₄ = 4.2 cfs
V ₅ = 6.8 cfs



NOTE: The proposed drainage plan provided herein is a preliminary design and is subject to change. The engineer will modify or alter the general drainage plan as necessary in order to meet the requirements of the city and to obtain the most economical design and construction possible.

BAUGHMAN COMPANY P.A.
 ENGINEERING, SURVEYING, PLANNING