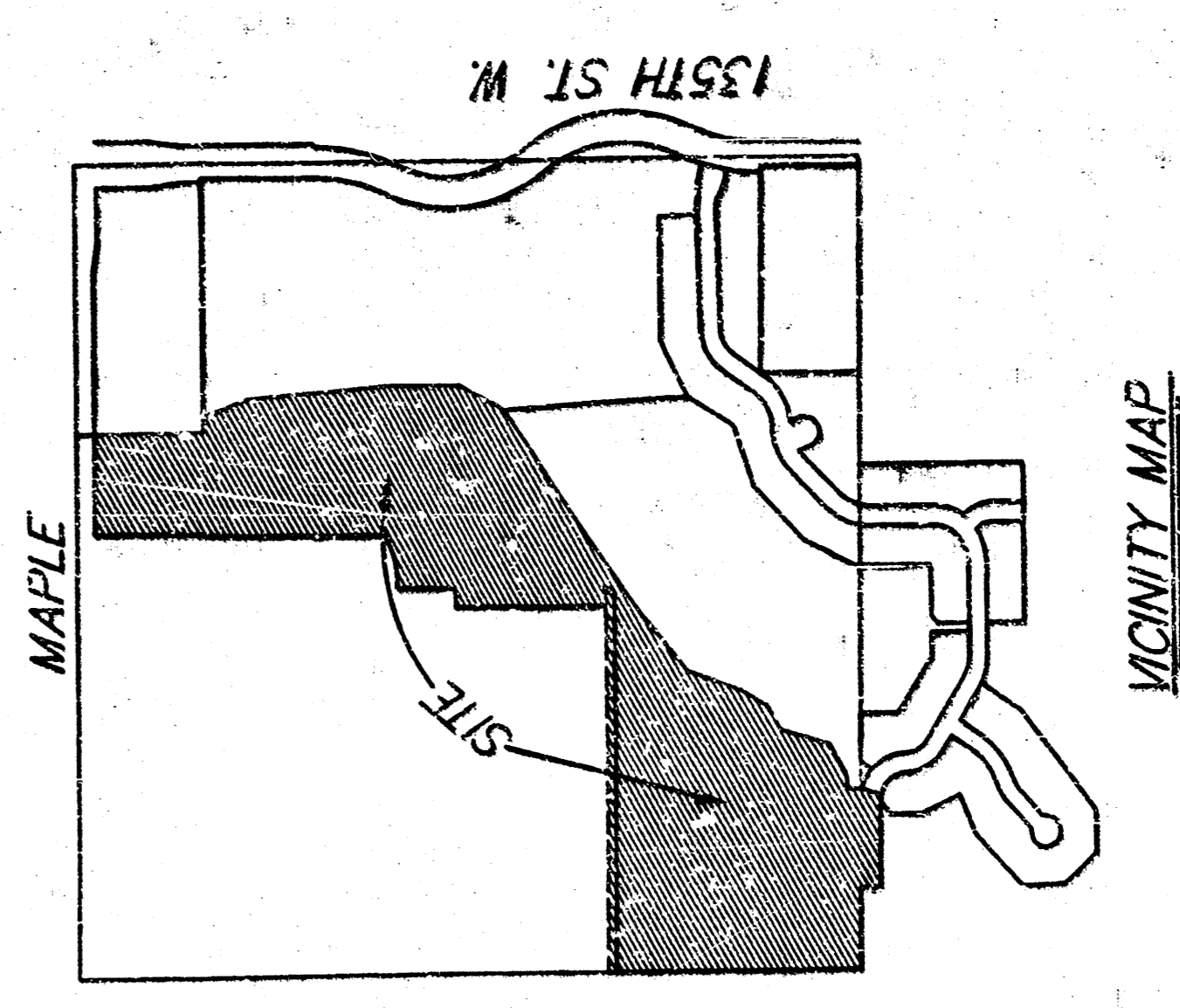
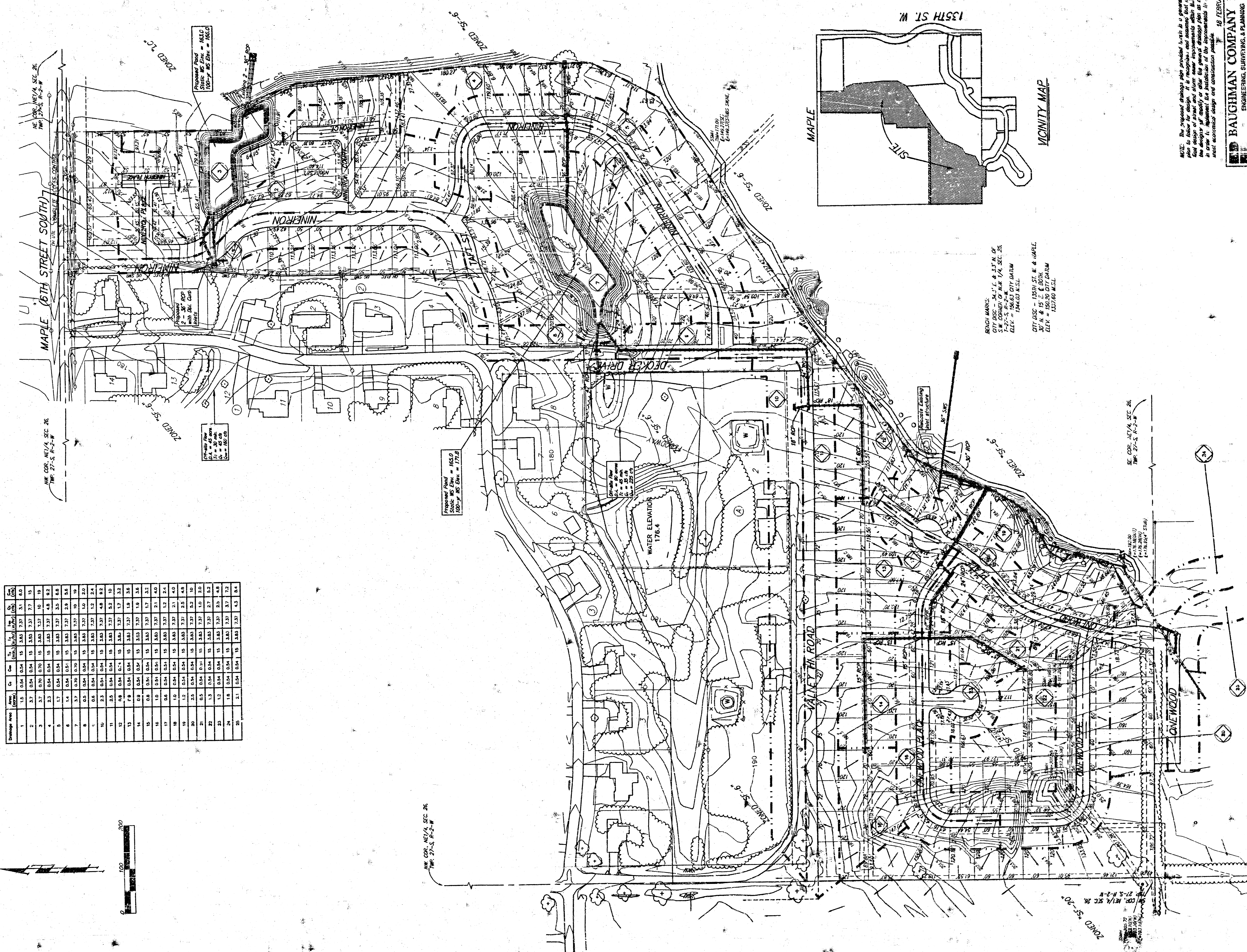


DRAINAGE PLAN AUBURN HILLS 12TH ADDITION WICHITA, SEDGWICK COUNTY, KANSAS

Drainage Area	Area (Ac.)	C _s	C _m	C _u	C _v	C _w	C _o	C _t	C _b	C _f	C _g	C _h	C _i	C _j	C _k	C _l	C _m	C _n	C _o	C _p	C _q	C _r	C _s	C _t	C _u	C _v	C _w	C _x	C _y	C _z	
1	0.15	0.04	0.04	15	5.85	7.97	5.1	6.0																							
2	3.7	0.04	0.04	15	5.85	7.97	7.7	15																							
3	3.7	0.70	0.70	15	5.85	7.97	4.8	9.2																							
4	1.7	0.04	0.04	15	5.85	7.97	5.5	8.8																							
5	3.7	0.70	0.70	15	5.85	7.97	10	19																							
6	0.5	0.04	0.04	15	5.85	7.97	1.0	2.0																							
7	0.6	0.04	0.04	15	5.85	7.97	1.5	2.4																							
8	3.3	0.04	0.04	15	5.85	7.97	4.8	9.2																							
9	0.8	0.04	0.04	15	5.85	7.97	1.7	3.5																							
10	0.8	0.04	0.04	15	5.85	7.97	1.5	3.0																							
11	0.8	0.04	0.04	15	5.85	7.97	1.5	3.0																							
12	0.8	0.04	0.04	15	5.85	7.97	1.5	3.0																							
13	0.8	0.04	0.04	15	5.85	7.97	1.5	3.0																							
14	0.8	0.04	0.04	15	5.85	7.97	1.5	3.0																							
15	0.8	0.04	0.04	15	5.85	7.97	1.5	3.0																							
16	0.8	0.04	0.04	15	5.85	7.97	1.5	3.0																							
17	0.8	0.04	0.04	15	5.85	7.97	1.5	3.0																							
18	0.8	0.04	0.04	15	5.85	7.97	1.5	3.0																							
19	0.8	0.04	0.04	15	5.85	7.97	1.5	3.0																							
20	0.8	0.04	0.04	15	5.85	7.97	1.5	3.0																							
21	0.8	0.04	0.04	15	5.85	7.97	1.5	3.0																							
22	0.8	0.04	0.04	15	5.85	7.97	1.5	3.0																							
23	0.8	0.04	0.04	15	5.85	7.97	1.5	3.0																							
24	0.8	0.04	0.04	15	5.85	7.97	1.5	3.0																							
25	0.8	0.04	0.04	15	5.85	7.97	1.5	3.0																							
26	0.8	0.04	0.04	15	5.85	7.97	1.5	3.0																							



BENCH MARK:
CITY DOTS - 34.1, 3, & 31 N. OF
7-27-S-R-2-W, 1/4 SEC. 26,
ELEV. = 156.63 CITY DATUM
1940'S M.S.L.

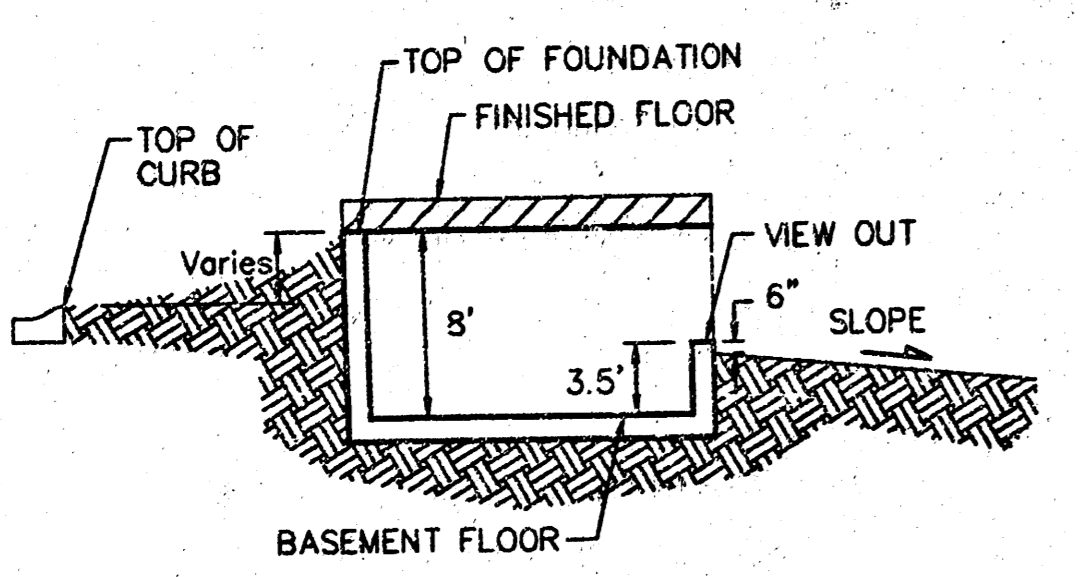
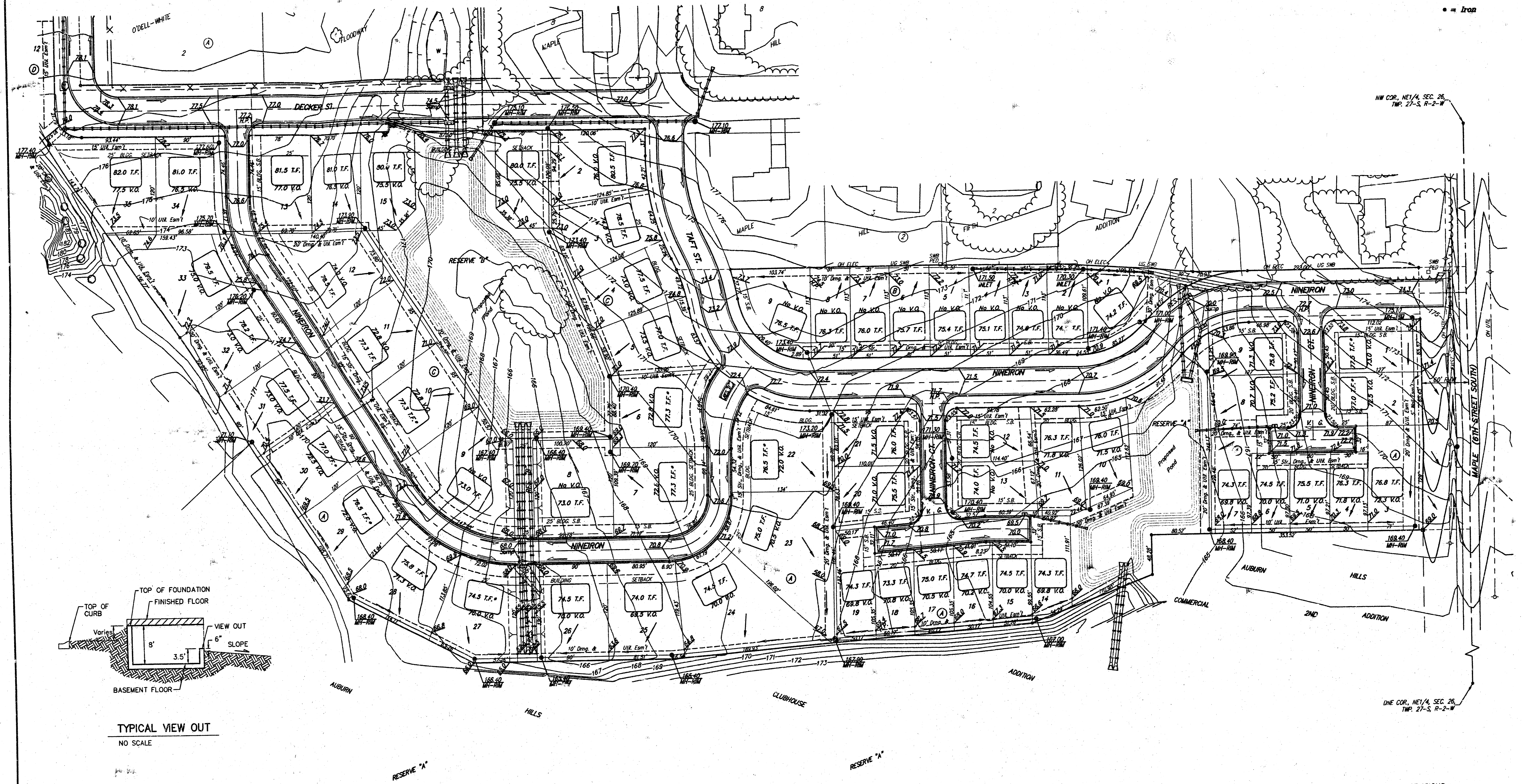
CITY DOTS - 15TH ST. N. & MAPLE,
30' N. & 15' E. OF 80TH,
ELEV. = 155.20 CITY DATUM
1937/80 M.S.L.

NOTE: The proposed drainage plan provided herein is a preliminary design and is subject to change without notice. The engineer assumes no responsibility for the accuracy of the data furnished or for the results of the design. The design is based on the information furnished and is not to be used for any purpose other than that intended. The engineer's liability is limited to the design and construction of the drainage system as shown on the drawings. The engineer's liability is limited to the design and construction of the drainage system as shown on the drawings. The engineer's liability is limited to the design and construction of the drainage system as shown on the drawings.

18 FEBRUARY 2002

BAUGHMAN COMPANY P.A.
ENGINEERING, SURVEYING, & PLANNING
1111 W. 15TH ST., SUITE 100
WICHITA, KANSAS 67202-1111
TEL: 316-261-1111
FAX: 316-261-1112

SCALE 1" = 60'
 • = Iron



TYPICAL VIEW OUT
 NO SCALE

NOTES:
 Proposed Top of Foundation Elevations Are Shown On Plans. Contractor to Set Finished Floor Elevations.
 All Street Elevations Shown on Plans Are for Top of Curb (Full-Height). Typically Roll-Type Curbs are Constructed. Deduct 0.25' From Top of Curb (Full-Height).
 This Grading Plan is Designed with View-Out Basements. Elevations Shown at Rear of House (XX.X V.O.) Are for Minimum Opening.
 * Requires extra-deep foundation.

MINIMUM BUILDING PAD ELEVATIONS FOR LOWEST OPENING TO THE STRUCTURES		
LOT	BLOCK	ELEVATION CITY DATUM
7,8,9,10,11,14	A	169.3
1-15	C	172.8

BENCH MARKS:
 CITY DISC - 34.3' E. & 3.3' N. OF S.W. CORNER OF N.W. 1/4, SEC. 26, T-27-S, R-2-W
 ELEV. = 156.63 CITY DATUM 1344.03 M.S.L.
 CITY DISC - 135TH ST. W. & MAPLE, 30' N. & 15' E. @ BOTH
 ELEV. = 150.20 CITY DATUM 1337.60 M.S.L.

NOTE:
 A MASTER GRADING PLAN FOR DRAINAGE HAS BEEN DEVELOPED FOR THIS SUBDIVISION AND IS ON FILE WITH THE CITY OF WICHITA, KANSAS. ALL DRAINAGE EASEMENTS, RIGHTS-OF-WAY, OR RESERVES SHALL REMAIN AT ESTABLISHED GRADES OR AS MODIFIED WITH THE APPROVAL OF THE CITY ENGINEER OF THE CITY OF WICHITA, KANSAS. NO CONSTRUCTION WHICH IMPEDS THE FLOW OF THIS DRAINAGE SYSTEM SHALL BE ALLOWED.

REVISIONS			
NO.	DATE	DESCRIPTION	DR. BY
1	12/16/00	Rear Yard to 1%	JAK NBW

AUBURN HILLS 12TH ADDITION GRADING PLAN
 WICHITA, KANSAS

BAUGHMAN COMPANY P.A.
 ENGINEERING, SURVEYING, & PLANNING
 316-262-7271 • 319 ELLIS • WICHITA, KANSAS 67211

PROJECT NUMBER: _____ SHEET: **2** OF **2**

DESIGN: NEW	DRAWN: JAK	APPROVED: _____	DATE: 10/24/00	SCALE: 1" = 60'
-------------	------------	-----------------	----------------	-----------------