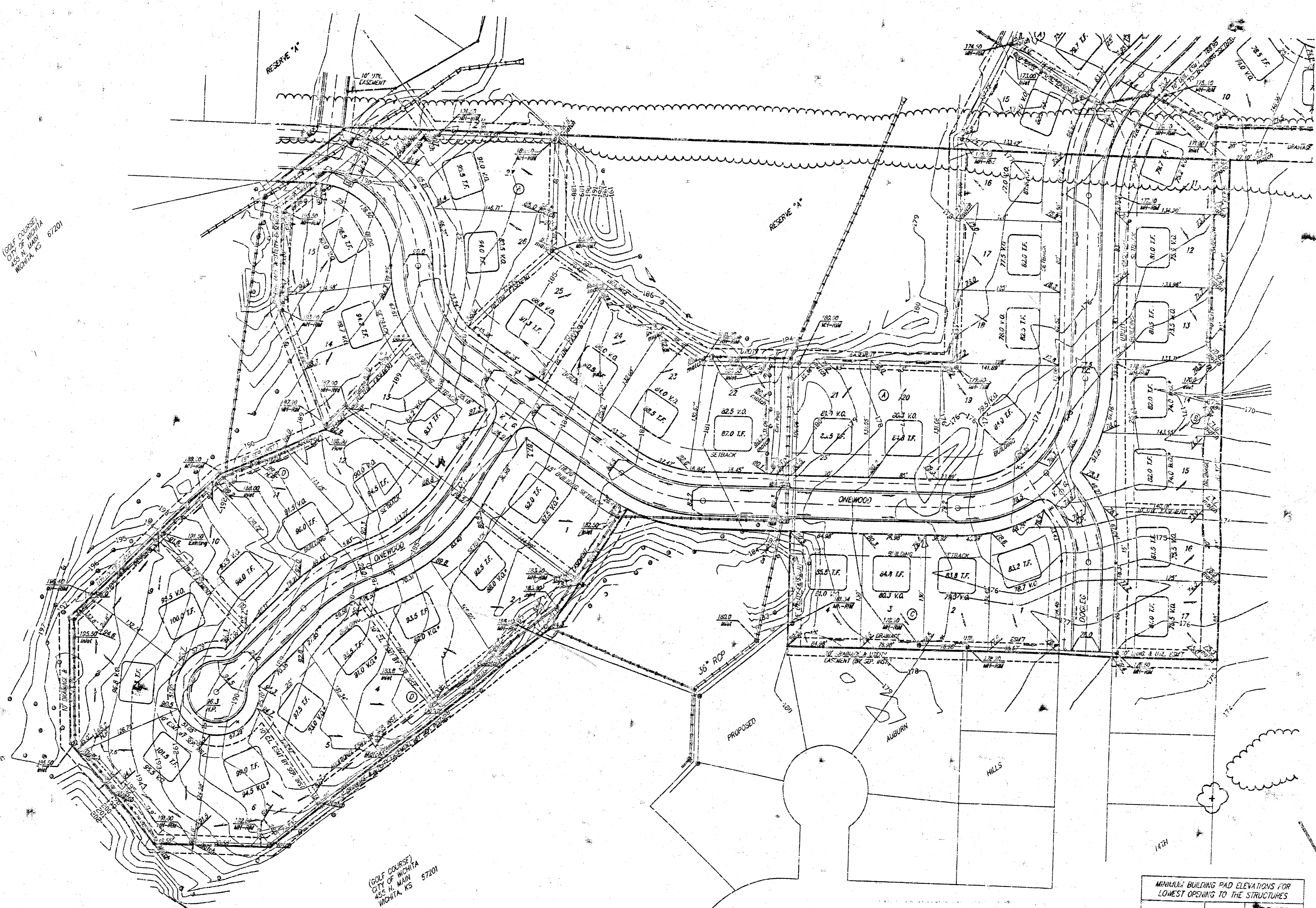


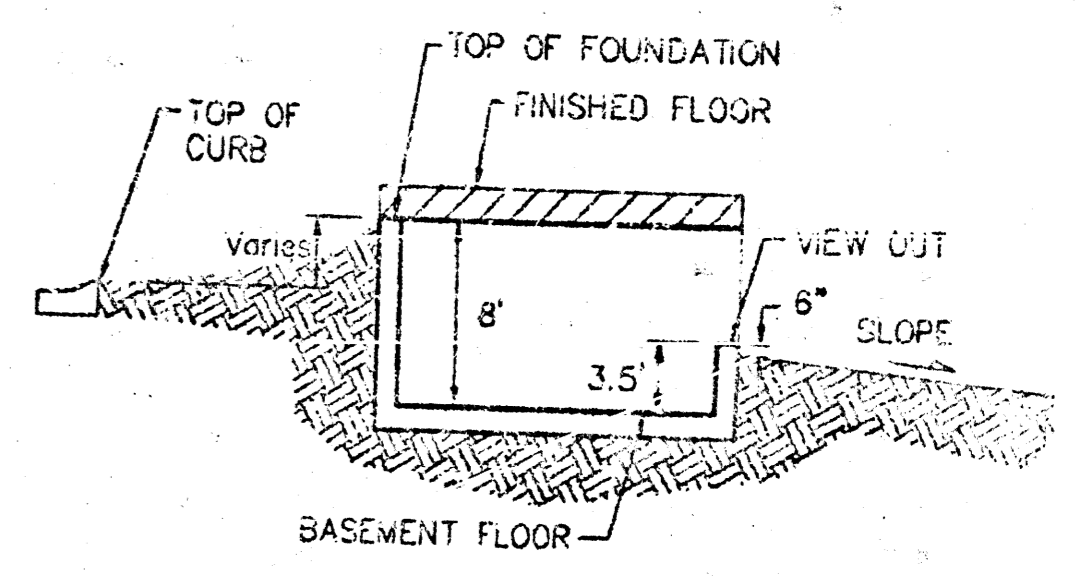
BENCHMARK:  
 CITY DISC- 34.3' E. & 2.3' N. OF S.W. CORNER 4  
 N.W. 1/4, SEC. 25, T-27-S, R-2-W. ELEV.-156.63  
 CITY DATUM(1344.03 M.S.L.)

GOLF COURSE,  
 1/2 SEC. 25, T-27-S,  
 R-2-W. WICHITA, KS. 67201

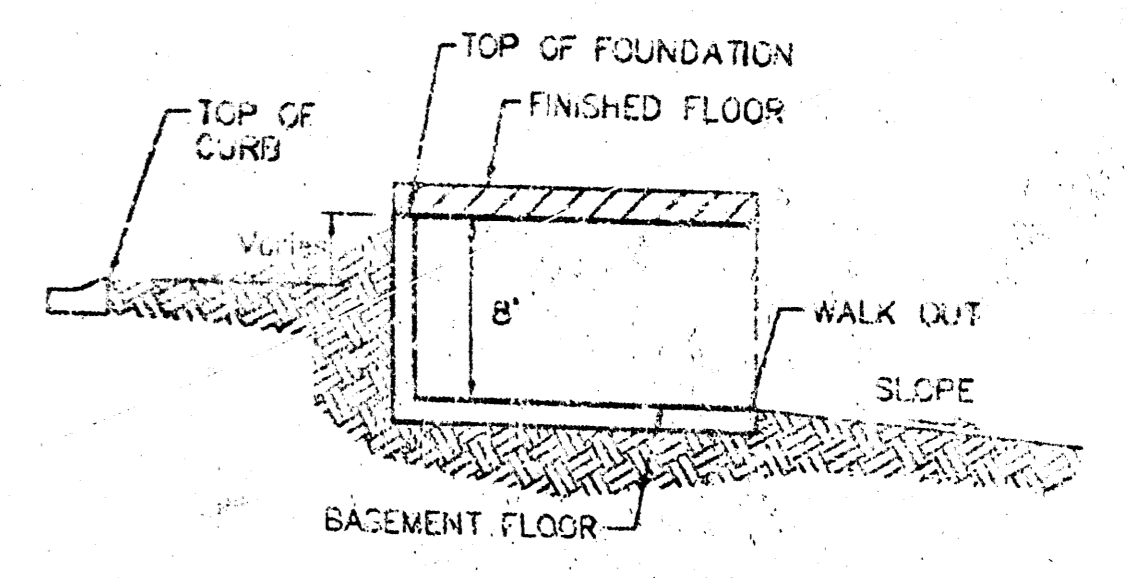
GOLF COURSE,  
 1/2 SEC. 25, T-27-S,  
 R-2-W. WICHITA, KS. 67201



SCALE: 1" = 60'  
 • = IRON



TYPICAL VIEW OUT  
 NO SCALE



TYPICAL WALK OUT  
 NO SCALE

**NOTES:**

A master grading plan for drainage has been developed for the subdivision and is on file with the City of Wichita, Kansas. Construction of residential structures must follow the master site grading plan elevations which are higher than the minimum pad requirement.

All drainage easements, rights-of-way, or reserves shall remain at established grades or as modified with the approval of the City Engineer of the City of Wichita, Kansas. No obstructions which impede the flow of this drainage system shall be allowed.

Proposed top of foundation elevations are shown on plans. Contractor to set finished floor elevations.

All street elevations shown on plans are for top of curb (full-height). Typically roll-type curbs are constructed. Deduct 0.25' from top of curb (full-height).

This Grading Plan is designed with View-Cut and Walk-Out Basements. Elevations shown at Rear of House (X.X' V.O. and XX' #0.) are for minimum opening.

All elevations shown on plans are City of Wichita Datum.

\* Requires extra-deep foundation.

As-Built 7-15-02 by AEG

**APPROVED  
 DRAINAGE PLAN**

MINIMUM BUILDING PAD ELEVATIONS FOR LOWEST OPENING TO THE STRUCTURES		
LOT	BLOCK	ELEVATION
		CITY DATUM
1-5	A	165.0
6	A	166.0
7	A	167.0
8-11	A	168.0
12	A	171.0
13	A	173.0
14-16	A	175.0

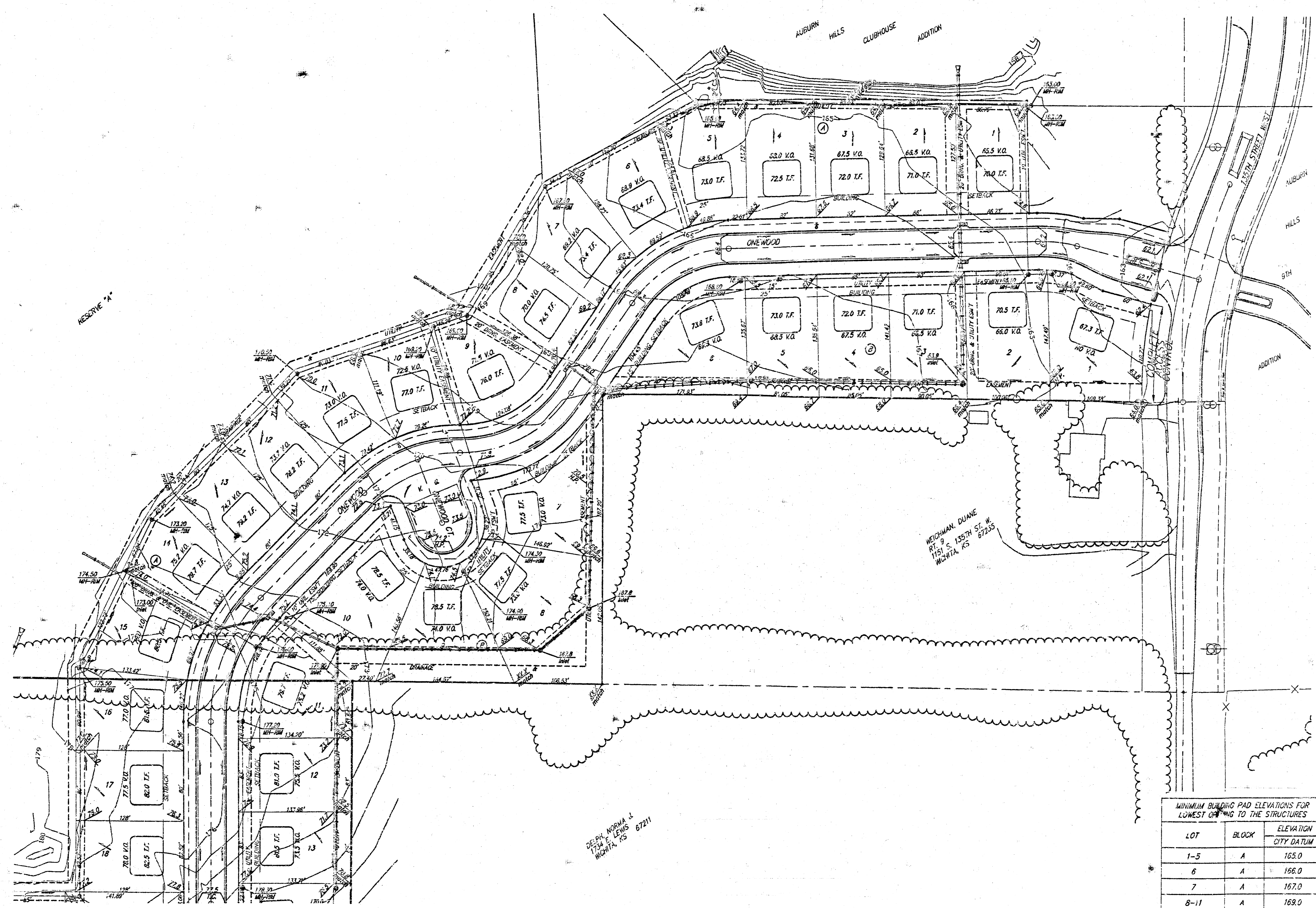
**AUBURN HILLS 19TH ADDITION  
 GRADING PLAN**  
 WICHITA, KANSAS

**BAUGHMAN COMPANY P.A.**  
 ENGINEERING, SURVEYING, & PLANNING  
 316-222-7271 • 319 ELLIS • WICHITA, KANSAS 67201

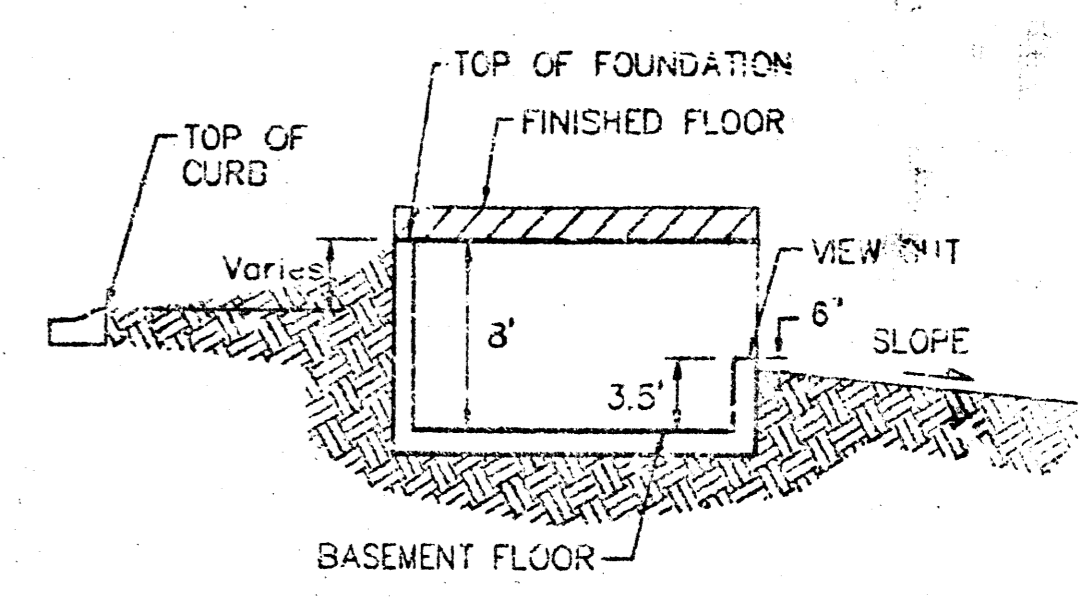
PROJECT NUMBER: \_\_\_\_\_

DESIGN: NEW    DRAWN: JAK/AEG    APPROVED: \_\_\_\_\_    DATE: 11/14/01    SCALE: 1" = 60'    SHEET: 1 OF 2

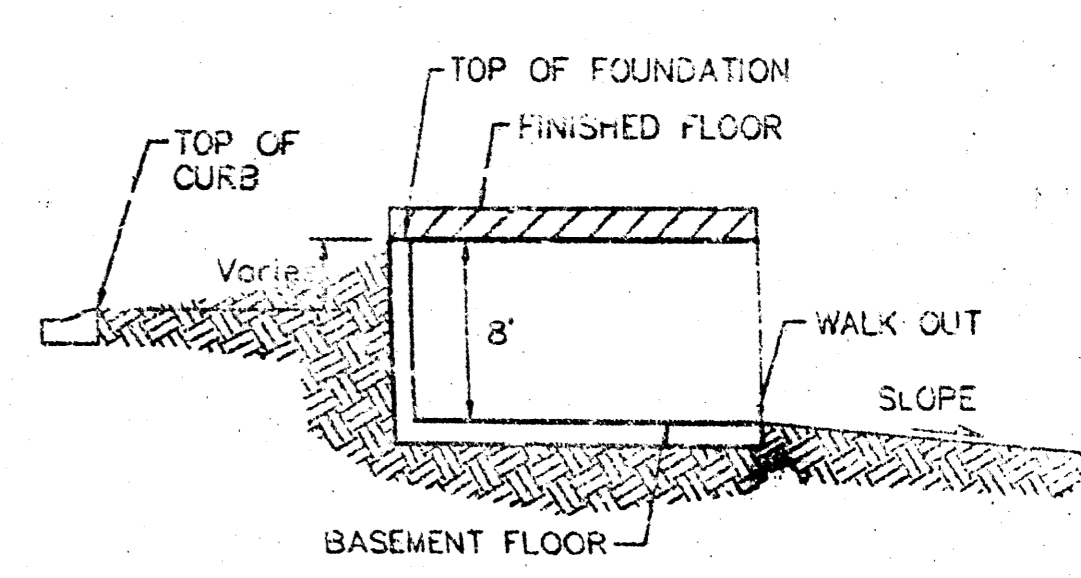
BENCHMARK:  
 CITY DISC- 34.3' E. & 3.3' N. OF S.W. CORNER OF  
 N.W. 1/4, SEC. 25, T-27-S, R-2-W. ELEV.=156.03  
 CITY DATUM(1344.03 M.S.L.)



SCALE: 1" = 60'  
 • = IRON



TYPICAL VIEW CUT  
 NO SCALE



TYPICAL WALK OUT  
 NO SCALE

**NOTES:**

A master grading plan for drainage has been developed for the subdivision and is on file with the City of Wichita, Kansas. Construction of residential structures must follow the master site grading plan elevations which are higher than the minimum pad requirement.

All drainage easements, rights-of-way, or reserves shall remain at established grades or as modified with the approval of the City Engineer of the City of Wichita, Kansas. No obstructions which impede the flow of this drainage system shall be allowed.

Proposed top of foundation elevations are shown on plans. Contractor to set finished floor elevations.

All street elevations shown on plans are for top of curb (full-height). Typically curb-type curbs are constructed. Deduct 0.25' from top of curb (full-height).

This Grading Plan is designed with View-Out and Walk-Out Basements. Elevations shown at Rear of House (XX.X' V.O. and XX.X' W.O.) are for minimum opening.

All elevations shown on plans are City of Wichita Datum.

\* Requires extra-deep foundation.

As-Built 7-15-02 by AEG

MINIMUM BUILDING PAD ELEVATIONS FOR LOWEST OPENING TO THE STRUCTURES		
LOT	BLOCK	ELEVATION CITY DATUM
1-5	A	163.0
6	A	166.0
7	A	167.0
8-11	A	169.0
12	A	171.0
13	A	173.0
14-16	A	175.0

**AUBURN HILLS 13TH ADDITION  
 GRADING PLAN**  
 WICHITA, KANSAS

**BAUGHMAN COMPANY P.A.**  
 ENGINEERING, SURVEYING, & PLANNING

318-262-7271 • 315 ELLIS • WICHITA, KANSAS 67211

DESIGN NEW	DRAWN JAK/AEG	APPROVED	DATE 11/14/01	SCALE 1" = 60'
---------------	------------------	----------	------------------	-------------------

PROJECT NUMBER: 318-262-7271  
 SHEET: 2 OF 2

DEPA MORHA &  
 WICHITA, KS 67211